

**1****BOLT PRODUCTS**

- Hexagon Head Bolts
- Hexagon Head Set Screws
- Cup Head Bolts
- Hexagon Coach Screws

PAGE 6

**2****NUT PRODUCTS**

- Standard Hexagon
- Fine Pitch
- Left Hand
- Lock/Half
- Nylon Insert
- Glenloch
- Dome/Cap/Acorn
- Wing
- Weld
- Slotted
- Coupling
- Flange
- Tee

PAGE 26

**3****WASHER PRODUCTS**

- Flat Round
- Spring
- Belleville
- Cup
- Crinkle
- Curved
- Mudguard
- Small OD.
- Tooth Lock
- Serrated

PAGE 38

**4****HEX SOCKET PRODUCTS**

- Socket Hd Cap Screws
- Button Hd Socket Screws
- Countersunk Socket Screws
- Socket Hd Set Screws
- Low Head Cap Screws

PAGE 46

**5****METAL THREAD SCREWS**

- Cheese Head
- Countersunk Head
- Pan Head
- Round Head
- Raised Countersunk Head
- Mush Head

PAGE 64

**6****SELF TAPPING & WOOD SCREWS**

- Bugle Batten
- Countersunk Head
- Pan Head
- Raised Countersunk Head

PAGE 84

**7****SECURITY PRODUCTS**

- Eye Drive
- Post Hexagon
- Post Torx
- Nuts
- Bits
- Keys
- Tools









PAGE 98

**8****MISCELLANEOUS PRODUCTS**

- Allthread
- Engineers Studs
- Circlips/E Clips
- Flat Hd Nails
- Hex Socket Pressure Plugs
- Split Pins
- Hump Back Split Pins
- Glenloch Wave Spring Pins
- Snap Pins
- Push Rings
- Rolled Spring Pins

PAGE 108

SECTION

<b>1</b>	<b>BOLT PRODUCTS</b> 	PAGE 6
<b>2</b>	<b>NUT PRODUCTS</b> 	PAGE 26
<b>3</b>	<b>WASHER PRODUCTS</b> 	PAGE 38
<b>4</b>	<b>HEX SOCKET PRODUCTS</b> 	PAGE 46
<b>5</b>	<b>METAL THREAD SCREWS</b> 	PAGE 64
<b>6</b>	<b>SELF TAPPING &amp; WOOD SCREWS</b> 	PAGE 84
<b>7</b>	<b>SECURITY PRODUCTS</b> 	PAGE 98
<b>8</b>	<b>MISCELLANEOUS PRODUCTS</b> 	PAGE 108

**HEXAGON HEAD BOLTS - DIN 931**



LENGTH

DIAMETER	M6		M6		M8		M8	
GRADE	304/A2		316/A4		304/A2		316/A4	
	Part No.	PKT Qty	Part No.	PKT Qty	Part No.	PKT Qty	Part No.	PKT Qty
30	2813	100	4085	100	5470	100		
35	2817	100	4095	100	2851	100	4109	100
40	2820	100	4096	100	2852	100	4111	100
45	2821	100	4097	100	2853	100	4114	100
50	2834	100	4098	100	2854	100	4115	100
55	2847	50	4099	50	2855	50	4117	50
60	2846	50	4101	50	2856	50	4118	50
65	2848	50	4102	50	2857	50	4121	50
70	2849	50	4103	50	2864	50	4122	50
75	4343	50	9311	50	9292	50	9312	50
80	2850	50	4104	50	2867	50	4123	50
90	9456	50	4105	50	2870	50	4124	50
100	9457	50	4106	50	2874	50	4125	50
110			37843	25	2889	25		
120			37920	25			30963	25
130	13841	25	5282	25	2896	25	4127	25
150	13842	25	30817	25	2897	25	4128	25

**HEXAGON HEAD BOLTS - DIN 931**

LENGTH

DIAMETER	M10		M10		M12		M12	
GRADE	304/A2		316/A4		304/A2		316/A4	
	Part No.	PKT Qty	Part No.	PKT Qty	Part No.	PKT Qty	Part No.	PKT Qty
35	5477	100						
40	2904	100	4131	100	3013	50	5495	50
45	2906	100	4138	100	3017	50	4170	50
50	2920	100	4140	100	3020	25	4173	25
55	2924	50	4141	50	3032	50	4180	25
60	2928	50	4148	50	3033	50	4182	25
65	2935	50	4150	50	3034	50	4186	25
70	2938	50	4152	50	3035	50	4198	25
75	9293	50	6508	50	9294	50	5862	25
80	2941	50	4154	50	3036	25	4203	25
90	2943	50	4155	50	3037	25	4207	25
100	2946	50	4156	50	3038	25	4211	25
110	3000	25	30960	25	3039	25	15299	25
120	3001	25	4157	25	3040	25	4220	25
130	3002	25	4160	25	3041	25	4222	25
140	37473	25	30818	25	19311	25	19304	25
150	3003	25	4162	25	3043	25	4225	25
160			33718	25	9210	25	31191	25
170			30819	25			33914	25
180			9315	25			4441	25
190							33915	25
200			9316	25			19303	25
210							33916	10
220			30820	10			30821	10
240			34176	10			33804	10
250							30822	10
260							33961	10
280							36469	10
300							33819	10



**HEXAGON HEAD BOLTS - DIN 931**



LENGTH

DIAMETER	M14		M16		M16	
GRADE	316/A4		304/A2		316/A4	
	Part No.	PKT Qty	Part No.	PKT Qty	Part No.	PKT Qty
50	9234	25	3044	25	4229	25
55			3045	25	4233	25
60	14958	25	3046	25	4234	25
65			3047	25	4236	25
70	9236	25	3048	25	4237	25
75	14959	25	3049	25	4239	25
80	9237	25	3051	25	4240	25
90	9238	25	3052	25	4242	25
100	9239	25	3053	25	4243	25
110			9458	25	4247	25
120	9240	25	3054	25	4255	25
130			3055	20	4258	20
140	9241	25	3056	20	4262	20
150			3057	20	4265	20
160			3058	20	16378	20
180					4268	10
200			3059	10	4269	10
220					33803	10
240					33802	10
300					33932	10

LENGTH

DIAMETER	M18		M20		M20		M22	
GRADE	316/A4		304/A2		316/A4		316/A4	
	Part No.	PKT Qty	Part No.	PKT Qty	Part No.	PKT Qty	Part No.	PKT Qty
60	7153	25	4347	25	4279	25		
65			3074	25	4280	25		
70			3076	25	4281	25		
75			3077	20	4282	20		
80	30824	25	3078	20	4283	20		
90			3079	10	4284	10	13812	10
100			3081	10	4285	10	13813	10
110					4286	10		
120			3082	10	4287	10	14497	10
130			3083	10	4288	10		
140			15821	10	4289	10		
150			4349	10	4291	10		
160					31165	10		
180					16908	10		
200					19599	10		
240					37185	10		
250					30829	10		
260					34158	10		
300					33933	10		

**HEXAGON HEAD BOLTS - DIN 931**

		M24		M24		M27	
		304/A2		316/A4		316/A4	
LENGTH	DIAMETER	Part No.	PKT Qty	Part No.	PKT Qty	Part No.	PKT Qty
	70			4293	10		
	75			9313	10		
	80	16694	10	4294	10		
	90	16695	10	4295	10		
	100	16696	10	4296	10	16541	5
	110	16697	10	15235	10		
	120	16698	10	4297	10	30097	5
	130	16699	10	4298	10	16245	5
	140			4319	10	15901	5
	150	16701	10	4322	10		
	160			15236	10	15873	5
	180			15237	10		
	190			33917	10		
	200			19593	10		
250			30831	10			



		M30		M36	
		316/A4		316/A4	
LENGTH	DIAMETER	Part No.	PKT Qty	Part No.	PKT Qty
	90	4338	5		
	100	4341	5		
	120			16246	2
	130	4342	5	16543	2
	140	30966	5	31362	2
	150	30835	5		
	160	4344	5		
	180	4345	5		
	200			16546	2
	250			16548	2

**HEXAGON HEAD BOLTS - ANSI B18.2.1**



LENGTH

DIAMETER	1/4 UNC		1/4 UNC		5/16 UNC		5/16 UNC	
GRADE	304/A2		316/A4		304/A2		316/A4	
	Part No.	PKT Qty	Part No.	PKT Qty	Part No.	PKT Qty	Part No.	PKT Qty
1.1/4	1573	100	2440	100				
1.1/2	1574	100	2441	100	1588	100	2520	100
1.3/4	1575	100	2501	100	1589	100	2522	100
2	1572	100	2503	100	1590	100	2524	100
2.1/4	1576	50	2505	50	1591	50	2526	50
2.1/2	1577	50	2507	50	1592	50	2528	50
2.3/4	1578	50			1593	50	2529	50
3	1579	50	2509	50	1594	50	2531	50
3.1/2	1580	50	2511	50	1595	50	2532	50
4	1581	50	2513	50	1597	50	2524	50
4.1/2	1582	25	9642	25	1598	25	2537	25
5	1583	25	2515	25	1599	25	2538	25
5.1/2	1584	25			1600	25	2541	25
6	1585	25	2516	25	1601	25	2543	25

LENGTH

DIAMETER	3/8 UNC		3/8 UNC		7/16 UNC	
GRADE	304/A2		316/A4		316/A4	
	Part No.	PKT Qty	Part No.	PKT Qty	Part No.	PKT Qty
1.1/2	1603	100	2545	100		
1.3/4	1604	100	2547	100	2569	50
2	1605	100	2548	100	2570	50
2.1/4	1606	50	2551	50		
2.1/2	1607	50	2554	50	2571	25
2.3/4	1608	50	2556	50		
3	1609	50	2559	50	2572	25
3.1/2	1610	50	2561	50		
4	1611	50	2562	50		
4.1/2	1612	25	2563	25		
5	1613	25	2564	25		
5.1/2	1614	25	2565	25		
6	1615	25	2566	25		
6.1/2	33870	25				
7			2567	25		
8	7167	25	2568	25		

**HEXAGON HEAD BOLTS - ANSI B18.2.1**

DIAMETER	1/2 UNC	1/2 UNC
GRADE	304/A2	316/A4

LENGTH

	Part No.	PKT Qty	Part No.	PKT Qty
1.3/4	19560	50	2589	50
2	3947	50	2590	50
2.1/4			2591	25
2.1/2	16791	25	2592	25
2.3/4			2593	25
3	19561	25	2594	25
3.1/4			2595	25
3.1/2	19562	25	2596	25
4	3950	25	2597	25
4.1/2	3951	25	2598	25
5	3952	25	2599	25
5.1/2			2600	25
6	19563	25	2601	25
6.1/2			2602	25
7			2603	25
7.1/2			2604	25
8			2606	25
8.1/2			2607	10
9				



**HEXAGON HEAD BOLTS - BS 1083**

DIAMETER	1/2 BSW	1/2 BSW
GRADE	304/A2	316/A4

LENGTH

	Part No.	PKT Qty	Part No.	PKT Qty
1.1/2	1616	50	5451	50
1.3/4	1617	50	2573	50
2	1618	50	2574	50
2.1/4				
2.1/2			2576	25
2.3/4	1621	25	2577	25
3	1622	25	2578	25
3.1/2	1624	25	2580	25
4	1625	25	2581	25
4.1/2			2582	25
5			2583	25



**HEXAGON HEAD BOLTS - ANSI B18.2.1**



LENGTH

DIAMETER	5/8 UNC		5/8 UNC		3/4 UNC		3/4 UNC	
GRADE	304/A2		316/A4		304/A2		316/A4	
	Part No.	PKT Qty	Part No.	PKT Qty	Part No.	PKT Qty	Part No.	PKT Qty
2	1631	25	2621	25				
2.1/4	1632	25	2622	25				
2.1/2	1633	25	2623	25	1644	25	2637	25
2.3/4	1634	25	2624	25	1645	25	2638	25
3	1635	25	2625	25	1646	20	2640	20
3.1/2	1637	25	2626	25	1648	10	2641	10
4	1638	25	2627	25	1650	10	2642	10
4.1/2	1639	25	2628	25	1651	10	2643	10
5	1640	20	2629	20	1652	10	2644	10
5.1/2	1641	20	2630	20	1653	10	2646	10
6	1642	20	2631	20	1654	10	2647	10
7			2633	10	37441	10	15880	10
8			2634	10				

LENGTH

DIAMETER	7/8 UNC		1 UNC	
GRADE	316/A4		316/A4	
	Part No.	PKT Qty	Part No.	PKT Qty
3	2650	10		
3.1/2	2651	10	2657	10
4	2652	10	2658	10
4.1/2	2653	10	2659	10
5	2654	10	2660	10
6	2655	10	2661	10

**HEXAGON HEAD BOLTS - ANSI B18.2.1**

LENGTH	1/4 UNF		5/16 UNF		3/8 UNF		
	DIAMETER	GRADE	DIAMETER	GRADE	DIAMETER	GRADE	
		304/A2		304/A2		304/A2	
		Part No.	PKT Qty	Part No.	PKT Qty	Part No.	PKT Qty
	1.1/4	1011	50				
	1.1/2	1012	50	1019	50	1024	50
	1.3/4					3965	50
	2	1014	50	1020	50	1025	50
	2.1/2	7136	50	6300	50	1026	50
	3	3964	50			1027	50
	3.1/2					30232	50
	4					30233	50

LENGTH	7/16 UNF		1/2 UNF		5/8 UNF		
	DIAMETER	GRADE	DIAMETER	GRADE	DIAMETER	GRADE	
		304/A2		304/A2		304/A2	
		Part No.	PKT Qty	Part No.	PKT Qty	Part No.	PKT Qty
	2	14281	50	1031	25		
	2.1/2	14925	50	1032	25		
	3	15328	50	1033	25	14998	25
	3.1/2	30234	25	19713	25		
	4			14997	25		
	4.1/2			30238	25		



**HEXAGON HEAD SET SCREWS - DIN 933**



LENGTH



DIAMETER	M3		M4		M4	
GRADE	304/A2		304/A2		316/A4	
	Part No.	PKT Qty	Part No.	PKT Qty	Part No.	PKT Qty
6	19741	100	19747	100		
8	16794	100	19748	•	3804	100
10	19742	100	4340	•	3805	•
12	19743	100	4913	•	3806	100
16	16795	100	19137	•	3807	100
20	19745	100	14035	•	3808	100
25	19296	100	16787	100	3809	100
30			19295	100		
35			11001	100		
40			16796	100		
50			16797	100		

LENGTH



DIAMETER	M5		M5		M6		M6	
GRADE	304/A2		316/A4		304/A2		316/A4	
	Part No.	PKT Qty	Part No.	PKT Qty	Part No.	PKT Qty	Part No.	PKT Qty
8	1060	•			37599	•		
10	1061	•	30361	100	11004	•	4912	100
12	1062	•	3810	100	1071	•	3819	100
16	1063	•	3811	100	1072	•	3820	100
20	1064	•	3812	100	1073	•	3821	100
25	1065	100	3813	100	1074	100	3822	100
30	1066	•	3814	100	1075	100	3823	100
35	1067	100	3815	100	1076	100	3824	100
40	1068	100	3816	100	1077	100	3825	100
45	14036	100	9459	100	1078	100	3826	100
50	1069	100	3817	100	1079	100	3827	100
55	1070	100			7302	•	30962	50
60			3818	100	1080	50	3828	50
65					1081	50	9460	50
70					1082	50	3829	50
75					9307	50	9309	50
80					1083	50	3830	50
90					11006	50	3831	50
100					1084	50	3832	50

• PLEASE REFER TO BOOKLET AT BACK OF THE CATALOGUE FOR PACK QUANTITY.

**HEXAGON HEAD SET SCREWS - DIN 933**



LENGTH

DIAMETER	M8		M8		M10		M10	
GRADE	304/A2		316/A4		304/A2		316/A4	
	Part No.	PKT Qty	Part No.	PKT Qty	Part No.	PKT Qty	Part No.	PKT Qty
10			11033	100				
12	1085	100	3833	100	14037	100	14038	100
16	1086	100	3834	100	13604	100	4348	100
20	1087	100	3835	100	1101	100	4351	100
25	1088	100	3836	100	1102	100	4373	100
30	1089	100	3837	100	1103	100	4377	100
35	1090	100	3838	100	1104	100	4378	100
40	1091	100	3839	100	1105	100	4379	100
45	1092	100	3840	100	1106	100	4381	100
50	1093	100	3841	100	1503	100	4382	100
55	1094	50	3842	50	1504	50	4383	50
60	1095	50	3843	50	2992	50	4384	50
65	1096	50	3844	50	2993	50	4385	50
70	1097	50	3845	50	2994	50	4386	50
75	9308	50	9310	50	4346	50	8948	50
80	1098	50	3846	50	2995	50	4387	50
90	11007	50	3847	50	19116	50	4388	50
100	1099	50	3848	50	2996	50	4389	50
110					33899	25		

LENGTH

DIAMETER	M12		M12		M14		M14	
GRADE	304/A2		316/A4		304/A2		316/A4	
	Part No.	PKT Qty	Part No.	PKT Qty	Part No.	PKT Qty	Part No.	PKT Qty
20	2997	100	4529	100				
25	2998	100	4531	100	11011	25		
30	2999	100	4533	100			9243	25
35	3004	100	4534	100	11013	25		
40	3005	50	4536	50	11014	25	9244	25
45	3006	50	4537	50			9281	25
50	3007	50	4539	50			9245	25
55	3008	25	4540	50	11017	25		
60	3009	25	4541	50	11018	25	9246	25
65	3010	25	4542	25			14371	25
70	3011	25	4543	25	11019	25	4442	25
75	7149	25	8949	25				
80	3012	25	4544	25			15864	25
90	3014	25	4546	25			9247	25
100	3015	25	4547	25				
110	11008	25						
120	19089	25						
130	11009	25						
150	11010	25						

**HEXAGON HEAD SET SCREWS - DIN 933**



DIAMETER		M16		M16		M20		M20	
GRADE		304/A2		316/A4		304/A2		316/A4	
LENGTH	Part No.	PKT Qty	Part No.	PKT Qty	Part No.	PKT Qty	Part No.	PKT Qty	
	25	3016	25	4556	25				
	30	3018	25	4559	25	3060	25	30364	25
	35	3019	25	4561	25	3061	25	4650	25
	40	3021	25	4565	25	3062	25	4652	25
	45	3022	25	4568	25	3063	25	4655	25
	50	3023	25	4570	25	3064	25	4657	25
	55	3024	25	4572	25	3065	25	4659	25
	60	3025	25	4586	25	3066	25	4663	25
	65	3026	25	4588	25	3067	25	4666	25
	70	3027	25	4637	25	3068	25	4667	25
	75	3028	25	4640	25	6099	20	4668	20
80	3029	25	4643	25	3069	20	4669	20	
90	3030	25	4646	25	3070	10	4670	10	
100	3031	25	4648	25	3071	10	4671	10	

DIAMETER		M22		M24		M24	
GRADE		316/A4		304/A2		316/A4	
LENGTH	Part No.	PKT Qty	Part No.	PKT Qty	Part No.	PKT Qty	
	40			19753	10	30365	10
	50	14039	10	16689	10	4672	10
	55			16690	10		
	60	14362	10	16691	10	4673	10
	65			16692	10	4674	10
	70	11034	10	16693	10	4675	10
	75	11035	10				
	80			11031	10	9537	10
	90			16985	10	37548	10
	100			16986	10	11039	10

DIAMETER		M27		M30	
GRADE		316/A4		316/A4	
LENGTH	Part No.	PKT Qty	Part No.	PKT Qty	
	80	15866	5		
	90			15872	5

**HEXAGON HEAD SET SCREWS - DIN 933 FINE PITCH**

DIAMETER		M8x1.00P		M10x1.25P		
GRADE		316/A4		316/A4		
LENGTH	Part No.		PKT Qty	Part No.		PKT Qty
	25	30342	10	30085	10	
	40	30343	10			
	50			30086	10	
	90			30087	10	

DIAMETER		M12x1.25P		M12x1.5P		
GRADE		316/A4		316/A4		
LENGTH	Part No.		PKT Qty	Part No.		PKT Qty
	30	30345	10			
	50	30346	10	30349	10	
	90					



**HEXAGON HEAD SET SCREWS - ANSI B18.6.3(UNC)/BS450(BSW)**

DIAMETER	8-32 UNC	3/16 BSW	3/16 BSW
GRADE	304/A2	304/A2	316/A4

LENGTH

	Part No.	PKT Qty	Part No.	PKT Qty	Part No.	PKT Qty
3/8			1052	•		
1/2	19354	100	1053	100	1128	100
5/8			1054	100	4245	100
3/4			1055	100	1129	100
1	19357	100	1056	100	1130	100
1.1/4			1057	100	1131	100
1.1/2	19358	100	1058	100	1132	100
2			1059	100	1133	100
2.1/2					1134	100
3					1135	100

**HEXAGON HEAD SET SCREWS - ANSI B18.2.1**

DIAMETER	1/4 UNC	1/4 UNC	5/16 UNC	5/16 UNC
GRADE	304/A2	316/A4	304/A2	316/A4

LENGTH

	Part No.	PKT Qty	Part No.	PKT Qty	Part No.	PKT Qty	Part No.	PKT Qty
3/8	1505	100						
1/2	1506	•	1136	100	1517	200	1168	100
5/8	1507	•	1138	100	1518	300	1169	100
3/4	1508	•	1139	100	1519	200	1170	100
7/8	3934	100						
1	1509	100	1141	100	1520	200	1171	100
1.1/4	1510	100	1164	100	5393	100	1172	100
1.1/2	1511	100	1166	100	1522	100	1173	100
1.3/4	1512	100	9448	100	1523	200		
2	1513	100	1167	100	1524	100	1174	100
2.1/4					1525	50		
2.1/2	1514	50	4246	50	1526	100	4250	50
3	1515	50	4249	50	1527	100	9450	50
4	1516	50			30910	50	9451	50

• PLEASE REFER TO BOOKLET AT BACK OF THE CATALOGUE FOR PACK QUANTITY.

**HEXAGON HEAD SET SCREWS - ANSI B18.2.1(UNC)**

DIAMETER		3/8 UNC		3/8 UNC		7/16 UNC	
GRADE		304/A2		316/A4		316/A4	
LENGTH	Part No.	PKT Qty	Part No.	PKT Qty	Part No.	PKT Qty	
	1/2	1528	100	14033	100		
	5/8	1529	100				
	3/4	1530	100	1175	100		
	1	1531	100	1176	100	1182	100
	1.1/4	1532	100	1177	100	1183	100
	1.1/2	1533	100	1178	100	1184	50
	1.3/4	1534	100	9452	100		
	2	1535	100	1179	100		
	2.1/4	1536	50	1180	50		
	2.1/2	1537	50	1181	50		
	3	1538	50	2436	50		
	3.1/2	1539	50				
	4	1540	50	9453	50		



**HEXAGON HEAD SET SCREWS - BS1083**

DIAMETER		1/2 BSW		1/2 BSW	
GRADE		304/A2		316/A4	
LENGTH	Part No.	PKT Qty	Part No.	PKT Qty	
	3/4		1216	100	
	1		1235	100	
	1.1/4		1238	100	
	1.1/2		1239	50	
	1.3/4	1545	50	1240	50
	2		1241	50	
	2.1/2	1548	25	1243	25
	3	1550	25	1244	25
	3.1/2	1551	25	1245	25
	4	1552	25	1246	25



**HEXAGON HEAD SET SCREWS - ANSI B18.2.1**



LENGTH



DIAMETER		1/2 UNC		1/2 UNC	
GRADE		304/A2		316/A4	
	Part No.	PKT Qty	Part No.	PKT Qty	
3/4			1185		100
1	3945	100	1186		100
1.1/4	14025	100	1187		100
1.1/2	14026	50	1198		50
1.3/4	19564	50	1201		50
2	19565	50	1203		50
2.1/2	19566	25	1207		25
3	14027	25	1209		25
3.1/2	31572	25			
4	30907	25	1213		25

LENGTH



DIAMETER		5/8 UNC		5/8 UNC		3/4 UNC		3/4 UNC	
GRADE		304/A2		316/A4		304/A2		316/A4	
	Part No.	PKT Qty	Part No.	PKT Qty	Part No.	PKT Qty	Part No.	PKT Qty	
1	1553	25	1247	25					
1.1/4	1554	25	1248	25	1563	25	1452		25
1.1/2	1555	25	1249	25	1564	25	1454		25
1.3/4	1556	25	1311	25	1565	25	1457		25
2	1557	25	1375	25	1566	25	1459		25
2.1/4	1558	25			1567	25	4257		25
2.1/2	1559	25	1419	25	1568	25	1461		25
3	1560	25	1445	25	1569	20	1462		20
3.1/2	1561	25	1446	25	1570	10	14034		10
4	1562	25	1448	25	1571	10	1463		10

LENGTH



DIAMETER		7/8 UNC		1 UNC	
GRADE		316/A4		316/A4	
	Part No.	PKT Qty	Part No.	PKT Qty	
2	1464	10	1467		10
2.1/2	1465	10	1468		10
3	9454	10	1469		10
3.1/2			9455		10

**HEXAGON SET SCREWS - ANSI B18.2.1**

DIAMETER	10-32 UNF	1/4 UNF
GRADE	304/A2	304/A2

LENGTH	Part No.	PKT Qty	Part No.	PKT Qty
	1/2	1002	50	1007
5/8	19359	50	1008	50
3/4	1003	50	1009	50
1	1004	50	5132	50
1.1/4	11032	50		
1.1/2	1005	50		
2	1006	50		

DIAMETER	5/16 UNF	3/8 UNF	7/16 UNF
GRADE	304/A2	304/A2	304/A2

LENGTH	Part No.	PKT Qty	Part No.	PKT Qty	Part No.	PKT Qty
	5/8	1015	50			
3/4	1016	50	1021	50		
1	1017	50	1022	50	15327	50
1.1/4	5273	50	1023	50	15372	50
1.1/2					15622	50

DIAMETER	1/2 UNF	5/8 UNF
GRADE	304/A2	304/A2

LENGTH	Part No.	PKT Qty	Part No.	PKT Qty
	1	1028	25	
1.1/4	1029	25	14928	25
1.1/2	1030	25	14929	25
2			15926	25



**HEXAGON COACH SCREWS - DIN 571**



DIAMETER		M6		M8		
GRADE		316/A4		316/A4		
LENGTH	Part No.		PKT Qty	Part No.		PKT Qty
	30	3321	100	3342	50	
	40	3323	100	3346	50	
	50	3324	100	3351	50	
	65	3328	50	3353	50	
	75	3334	50	3357	50	
	100	3338	50	3361	50	
	120	38165	50			

DIAMETER		M10		M12		
GRADE		316/A4		316/A4		
LENGTH	Part No.		PKT Qty	Part No.		PKT Qty
	40	13865	50			
	50	3363	50	3369	25	
	65	3365	25	3370	25	
	75	3366	25	3371	25	
	100	3367	25	3372	25	
	120	3368	25	3373	25	
	130			19497	25	
	150	30055	25	30230	25	
	180			37237	25	

**NEW ZEALAND PRODUCT RANGE • AUSTRALIA - POA**



DIAMETER		M8		M10		M12	
GRADE		316/A4		316/A4		316/A4	
LENGTH	Part No.		PKT Qty	Part No.		PKT Qty	PKT Qty
	80	30972	50	38280	100		
	160			37234	25	37236	25
	180			37235	25		
	200					37238	25

**CUP HEAD SQUARE NECK BOLTS - DIN 603**

DIAMETER		M6		M8	
GRADE		316/A4		316/A4	
LENGTH	Part No.	PKT Qty	Part No.	PKT Qty	
	20	19737	100	19108	50
	25	3208	100	3238	50
	30	3210	100	3244	50
	40	3212	100	3250	50
	50	3218	100	3254	50
	60	3225	50	3257	50
	70	13826	50	13827	50
	80	3231	50	3260	50
	100			31001	50



DIAMETER		M10		M12	
GRADE		316/A4		316/A4	
LENGTH	Part No.	PKT Qty	Part No.	PKT Qty	
	25	19610	50		
	30	3265	50		
	35	19740	50		
	40	3268	50	33788	25
	50	3272	50	33934	25
	60	3274	25	30559	25
	70	3276	25		
	80	3278	25	3285	25
	100	3282	25	3288	25
120	15824	25			
130			37584	25	

**NEW ZEALAND PRODUCT RANGE • AUSTRALIA - POA**

**CUP HEAD SQUARE NECK BOLTS**

DIAMETER		M10		M12		M16	
GRADE		316/A4		316/A4		316/A4	
LENGTH	Part No.	PKT Qty	Part No.	PKT Qty	Part No.	PKT Qty	
	100				38111	25	
	120			38215	25	38107	25
	150	38109	25	38238	25	38305	25
	160			37582	10		
	180			37586	10		
	200	34174	25	37587	10		
	220					38306	10
	250					38307	10



**CUP HEAD SQUARE NECK BOLTS - ANSI B18.5**



LENGTH

LENGTH

DIAMETER	1/4 UNC	5/16 UNC
GRADE	304/A2	304/A2

	Part No.	PKT Qty	Part No.	PKT Qty
3/4	2394	100		
1	2395	100	2404	100
1.1/4	2396	100	2405	100
1.1/2	2397	100	2406	100
2	2398	100	2407	100
2.1/2	2399	50	2408	50
3	2400	50	2409	50
4	2401	50	2410	25
5	2402	25	2411	25
6	2403	25	2412	25

DIAMETER	3/8 UNC	1/2 UNC
GRADE	304/A2	304/A2

	Part No.	PKT Qty	Part No.	PKT Qty
1	33730	100		
1.1/4	2413	100	33892	25
1.1/2	2414	100		
2	2415	100	2423	25
2.1/2	2416	50	2425	25
3	2417	50	2426	25
3.1/2	2418	25		
4	2419	25	2428	25
5	2420	25	2430	25
6	2421	25	2431	25

**HEXAGON STANDARD NUTS - DIN 934**

**STANDARD NUTS**

**GRADE**                      **304/A2**    **316/A4**

DIAMETER



	Part No.	PKT Qty	Part No.	PKT Qty
M1.6	4350	200		
M2	3514	•	9262	200
M2.5	3515	•	7151	200
M3	3516	•	3749	•
M3.5			14878	200
M4	3517	•	3751	•
M5	3518	•	3753	•
M6	3519	•	3755	•
M7	10926	100		
M8	3520	•	3756	•
M10	3521	100	3758	100
M12	3522	100	3759	100
M14	19759	100	3762	100
M16	3523	50	5607	50
M18			3764	50
M20	3524	50	3766	50
M22	13917	25	3767	25
M24	3525	25	3769	25
M27			3771	25
M30	5517	10	3772	10
M33			3774	10
M36			3776	5
M39			37923	5
M42			3777	5
M48			3779	5

**HEXAGON STANDARD NUTS - DIN 934 - FINE PITCH**

**FINE PITCH STANDARD NUTS**

**GRADE**                      **304/A2**    **316/A4**

DIAMETER

	Pitch	Part No.	PKT Qty	Part No.	PKT Qty
M8	1.00			30551	100
M10	1.25	4859	10		
M12	1.25	4860	100		
M12	1.50	14954	100		
M16	1.50	15331	50		
M20	1.50			6231	50

• PLEASE REFER TO BOOKLET AT BACK OF THE CATALOGUE FOR PACK QUANTITY.

**HEXAGON STANDARD NUTS - ANSI B18.6.3 UP TO 12-24  
ANSI B18.2.2 1/4" AND ABOVE**

**UNC STANDARD NUTS**

DIAMETER

GRADE	304/A2		316/A4	
	Part No.	PKT Qty	Part No.	PKT Qty
2-56	1679	200		
4-40	1680	●		
5-40	1681	●		
6-32	1682	●		
8-32	1683	●	2662	200
10-24	1684	●	2663	●
12-24	1708	●		
1/4	1685	●	2664	●
5/16	1686	●	2665	100
3/8	1687	●	2667	300
7/16			2668	100
1/2	1688	100	2669	100
9/16	7205	50	2670	50
5/8	1689	50	2671	50
3/4	1690	50	2672	50
7/8	1691	25	2673	25
1	1692	25	2674	25
1.1/8	11092	20	2675	20
1.1/4	3883	10	2676	10
1.1/2			2677	5
1.3/4			2678	5



**LEFT HAND NUTS**

DIAMETER

GRADE	304/A2	
	Part No.	PKT Qty
M5	14163	●
M6	4772	●
M8	4773	●
M10	5109	●
M12	4779	●
M16	4780	●

● PLEASE REFER TO BOOKLET AT BACK OF THE CATALOGUE FOR PACK QUANTITY.



**HEXAGON STANDARD NUTS - ANSI B18.6.3 UP TO 10-32  
ANSI B18.2.2 1/4" AND ABOVE**

**UNF STANDARD NUTS**

DIAMETER	304/A2		316/A4	
	Part No.	PKT Qty	Part No.	PKT Qty
8-36	1713	200		
10-32	3887	200	2687	200
1/4	6591	●	2688	100
5-16	3890	100	2689	100
3/8	3891	100	2690	100
7/16			2691	50
1/2	3892	50	2692	50
5/8			2693	25
3/4			2694	25
7/8			2695	25
1			2697	25

**HEXAGON STANDARD NUTS - BS450 UP TO 3/16"  
BS1083 1/4" AND ABOVE**

**BSW STANDARD NUTS**

DIAMETER	304/A2		316/A4	
	Part No.	PKT Qty	Part No.	PKT Qty
1/8	1693	200		
5/32	1694	200		
3/16			2702	200
1/4			2703	100
1/2			2708	100
5/8	1699	50		
3/4	1700	50	2710	25

● PLEASE REFER TO BOOKLET AT BACK OF THE CATALOGUE FOR PACK QUANTITY.



### HEXAGON LOCK NUTS - DIN 439

#### LOCK NUTS

GRADE **304/A2** **316/A4**

DIAMETER

	Part No.	PKT Qty	Part No.	PKT Qty
M3	16801	200		
M4	11094	•	5269	100
M5	13911	•	3781	•
M6	13912	•	3782	•
M8	13913	•	3783	100
M10	13914	100	3784	100
M12	7029	50	3785	100
M14			33512	50
M16	13915	50	3786	50
M20	13916	25	3787	25
M24			3788	25
M30			16350	10

### HEXAGON LOCK NUTS - ANSI B18.2.2

#### UNC LOCK NUTS

GRADE **304/A2** **316/A4**

DIAMETER

	Part No.	PKT Qty	Part No.	PKT Qty
1/4	13905	•	2679	100
5/16	13906	100	2680	100
3/8	5234	100	2681	100
1/2	3918	50	2682	50
5/8			2683	50
3/4			2684	25
7/8			2685	25
1			2686	25

### HEXAGON LOCK NUTS - BS1083

#### BSW

GRADE **316/A4**

DIAMETER

	Part No.	PKT Qty
1/2	2711	50

### HEXAGON LOCK NUTS - ANSI B18.2.2

#### UNF

GRADE **316/A4**

DIAMETER

	Part No.	PKT Qty
1/4	2698	100
5/16	2699	100
3/8	2700	100
7/16		
1/2	2701	50
5/8	30089	50
3/4	15272	25
1	16160	25

**HEXAGON NYLON INSERT LOCK NUTS - DIN 985**

**METRIC**

**GRADE**                      **304/A2**    **316/A4**

**DIAMETER**

	Part No.	PKT Qty	Part No.	PKT Qty
M2	3376	100		
M2.5	16506	100		
M3	3377	•	30187	100
M4	3378	•	16808	•
M5	3379	•	3735	•
M6	3380	•	3737	•
M8	3381	100	3738	100
M10	3382	100	3739	100
M12	3383	100	3740	100
M14			15792	50
M16	3384	50	3741	50
M18			19098	50
M20	3385	25	3742	25
M22			16351	25
M24			3743	25
M27			31082	20
M30			16352	10
M36			30184	5

**NOTE:** USE OF MOLY DI SULPHIDE GREASE IS RECOMMENDED WHEN USING NYLON INSERT LOCK NUTS.

**HEXAGON NYLON INSERT LOCK NUTS**

**BSW**

**GRADE**                      **304/A2**    **316/A4**

**DIAMETER**

	Part No.	PKT Qty	Part No.	PKT Qty
1/2x.750A/F	15626	100	15689	100
1/2	1672	100	1493	100

**NOTE:** USE OF MOLY DI SULPHIDE GREASE IS RECOMMENDED WHEN USING NYLON INSERT LOCK NUTS.

• PLEASE REFER TO BOOKLET AT BACK OF THE CATALOGUE FOR PACK QUANTITY.

**HEXAGON NYLON INSERT LOCK NUTS - STANDARD TYPE - NM/ME**

UNC				
GRADE	304/A2		316/A4	
	Part No.	PKT Qty	Part No.	PKT Qty
4-40	1661	•		
5-40	1664	100		
6-32	1665	100		
8-32	1666	•		
10-24	1667	•	1478	100
1/4	1668	•	5111	100
5/16	1669	•	5112	100
3/8	1670	100	5113	100
7/16			5114	100
1/2	1671	100	5110	100
5/8	1673	50	5115	50
3/4	1675	25	5116	25
7/8			16353	25
1	1677	25	14541	25
1.1/8			15191	20
1.1/4			14542	10
1.1/2			14543	5

NOTE: USE OF MOLY DI SULPHIDE GREASE IS RECOMMENDED WHEN USING NYLON INSERT LOCK NUTS.

**HEXAGON NYLON INSERT LOCK NUTS - STANDARD TYPE - NM/ME**

UNF				
GRADE	304/A2		316/A4	
	Part No.	PKT Qty	Part No.	PKT Qty
10-32	1678	100		
1/4	3907	100	1486	100
5/16	3909	100	1487	100
3/8	3911	100	1488	100
7/16			1489	50
1/2			1490	50
5/8			1491	25
3/4			1492	25
1			15190	25

NOTE: USE OF MOLY DI SULPHIDE GREASE IS RECOMMENDED WHEN USING NYLON INSERT LOCK NUTS.

**HEXAGON NYLON INSERT LOCK NUTS - THIN TYPE - NTE**

UNC		UNF		
GRADE	304/A2		304/A2	
	Part No.	PKT Qty	Part No.	PKT Qty
1/4	9680	100		
5/16	9681	100		
3/8	9682	100	5372	100
1/2			14559	50

NOTE: USE OF MOLY DI SULPHIDE GREASE IS RECOMMENDED WHEN USING NYLON INSERT LOCK NUTS.

# STAINLESSFASTENERS PRODUCTCATALOGUE2007

## GLENLOCH NUTS - ALL STAINLESS SELF LOCKING NUT



DIAMETER

		COARSE PITCH		-METRIC-	FINE PITCH		
GRADE		304/A2			304/A2		
		Part No.	PKT Qty	Pitch	Part No.	PKT Qty	Pitch
M4		3532	100				
M5		3533	100				
M6		3534	100				
M8		3535	100				
M10		3536	100	1.50	4865	100	1.25
M12		3537	50	1.75	4866	50	1.25
M16		3538	25				
M20		3539	25				

DIAMETER

		UNC		UNF	BSW		
GRADE		304/A2		304/A2	304/A2		
		Part No.	PKT Qty	Part No.	PKT Qty	Part No.	PKT Qty
10-24		1655	100				
1/4		1656	100	3924	100		
5/16		1657	100				
3/8		1658	100				
1/2						1659	50
5/8		1660	25				

**NOTE:** RECOMMENDED FOR VIBRATION PROBLEMS WHERE HEAT AND CHEMICAL ATTACK PRECLUDE USE OF NYLON OR OTHER PLASTIC INSERTS. INSERT - STAINLESS STEEL GR 301.

**DOME/CAP NUTS**

DIAMETER

		ONE PIECE SOLID (DIN 1587)		ONE PIECE SOLID (DIN 1587)		TWO PIECE WELDED	
GRADE		304/A2		316/A4		304/A2	
		Part No.	PKT Qty	Part No.	PKT Qty	Part No.	PKT Qty
M3		30204	100				
M4		15822	100	31095	100	14391	100
M5		16971	100	30205	100	3526	100
M6		14949	100	4867	100	3527	100
M8		14950	100	9374	100	3528	100
M10		16972	100	9375	100	3529	100
M10X1.25P						30084	25
M12		14951	50	9376	50	3530	50
M16		16973	50	14558	50	3531	50
M20				30191	25	14528	25
M24				30192	25		

DIAMETER

		ONE PIECE SOLID UNC		ONE PIECE SOLID UNF	
GRADE		304/A2		304/A2	
		Part No.	PKT Qty	Part No.	PKT Qty
8-32		19513	100		
10-24		16149	100		
10-32				1116	100
1/4		19514	100	1117	100
5/16		16974	100	1119	100
3/8		16975	100	1120	100
7/16		31163	50	15754	50
1/2		15884	50	1121	50
5/8		15885	50		

DIAMETER

		TWO PIECE WELDED UNC		TWO PIECE WELDED BSW	
GRADE		304/A2		304/A2	
		Part No.	PKT Qty	Part No.	PKT Qty
8-32		1107	100		
10-24		1109	100		
1/4		1110	100		
5/16		1111	100		
3/8		1112	100		
1/2		1113	50	1114	50
5/8		1115	50		

# STAINLESSFASTENERS PRODUCT CATALOGUE 2007

## WING NUTS

### METRIC

GRADE **304/A2** **316/A4**

DIAMETER

	Part No.	PKT Qty	Part No.	PKT Qty
M3	11096	100	3570	100
M4	11097	100	3571	100
M5	19407	100	3572	100
M6	19408	100	3685	100
M8	19409	100	3686	100
M10	19410	100	3693	100
M12	19411	50	3705	50
M16	19412	25	3708	25
M20	3731	25		

### BSW

GRADE **304/A2** **316/A4**

DIAMETER

	Part No.	PKT Qty	Part No.	PKT Qty
1/2	31132	50	4829	50

### UNC

GRADE **304/A2** **316/A4**

DIAMETER

	Part No.	PKT Qty	Part No.	PKT Qty
10-24	33793	100	4825	100
1/4	33776	100	4826	100
5/16	33928	100	4827	100
3/8	33729	100	4828	100
1/2	3915	50	4830	50
5/8			4831	25
3/4	4832	25		

### UNF

GRADE **304/A2**

DIAMETER

	Part No.	PKT Qty
10-32	30188	100
1/4	4271	100
5/16	6176	100
3/8	6177	100

### HEXAGON WELD NUTS - DIN 929

**METRIC**

**GRADE** 304/A2

DIAMETER

	Part No.	PKT Qty
M3	15602	100
M4	15162	100
M5	14197	100
M6	14289	100
M8	14290	100



### SLOTTED HEXAGON NUTS

**METRIC**

**GRADE** 316/A4

DIAMETER

	Part No.	PKT Qty	Nut Depth (mm)	Slot Depth (mm)	Slot Width (mm)
M12	16965	1	10.00	5.00	4.25
M16	16966	1	13.00	6.00	5.70
M20	16967	1	16.00	6.00	5.70



### HEXAGON COUPLING NUTS - DIN 6334

**METRIC**

**GRADE** 316/A4

DIAMETER

	Part No.	PKT Qty	Nut Depth (mm)
M6	19012	•	18.00
M8	19013	•	24.00
M10	19014	•	30.00
M12	19015	•	36.00
M16	19016	1	48.00
M20	19017	1	60.00



● PLEASE REFER TO BOOKLET AT BACK OF THE CATALOGUE FOR PACK QUANTITY.

**HEXAGON FLANGE NUTS WITH SERRATIONS - DIN 6923**

**METRIC**

**GRADE 304/A2**

DIAMETER

Part No.

PKT Qty

DIAMETER	Part No.	PKT Qty
M5	30220	100
M6	30221	100
M8	30222	100

**TEE NUTS - PRONGE TYPE**

**METRIC**

**GRADE 304/A2**

DIAMETER

Part No.

PKT Qty

DIAMETER	Part No.	PKT Qty
M6	31080	50
M8	31081	50

**TEE NUTS - PRONGE TYPE**

**UNC**

**GRADE 304/A2**

DIAMETER

Part No.

PKT Qty

DIAMETER	Part No.	PKT Qty
10-24	31052	50
1/4	30360	50
5/16	31053	25
3/8	31054	25



**FLAT ROUND WASHERS - JG STANDARD**

		METRIC			METRIC	
GRADE		304/A2			316/A4	
SIZE	O.D	Thickness	Part No.	PKT Qty	Part No.	PKT Qty
	M3	7.0	0.5	3624	•	
M4	9.0	0.8	3625	•		
M5	10.0	0.8	3627	•		
M6	12.5	1.2	3628	•	4613	•
M8	17.0	1.2	3629	•	4615	•
M10	21.0	1.2	3630	•	4618	•
M12	24.0	1.5	3632	•	4620	•
M14	28.0	1.5	19891	•	7544	100
M16	30.0	1.5	3636	•	4624	100
M20	37.0	2.0	3637	100	4625	100
M22	39.0	2.5	13698	50		
M24	44.0	3.0	3638	50	4636	50
M27	50.0	3.0			4639	25
M30	56.0	3.0	4372	20	4642	20
M33	60.0	3.0			4678	20
M36	66.0	5.0			4680	10
M39	72.0	6.0			37924	10
M48	92.0	5.0			4682	10

**FLAT ROUND WASHERS - DIN 125A**

		METRIC			METRIC	
GRADE		304/A2			316/A4	
SIZE	O.D	Thickness	Part No.	PKT Qty	Part No.	PKT Qty
	M2	5.0	0.3			5277
M2.5	6.0	0.5			5994	•
M3	7.0	0.5			4687	•
M3.5	8.0	0.5			14879	•
M4	9.0	0.8			4689	•
M5	10.0	1.0	19875	•	4693	•
M6	12.5	1.6	19876	•	4695	•
M8	17.0	1.6	19877	•	4696	•
M10	21.0	2.0	19878	•	4697	100
M12	24.0	2.5	19879	100	4698	100
M14	28.0	2.5			30439	100
M16	30.0	3.0	19654	100	4699	100
M18	34.0	3.0			33948	100
M20	37.0	3.0	30154	100	4700	100
M22	39.0	3.0			30440	100
M24	44.0	4.0			4701	50
M39	72.0	6.0			37924	10
M42	78.0	7.0			38139	10
M48	72.0	8.0			38146	10

• PLEASE REFER TO BOOKLET AT BACK OF THE CATALOGUE FOR PACK QUANTITY.

**FLAT ROUND WASHERS - JG STANDARD**

SIZE

		IMPERIAL			IMPERIAL		
GRADE		304/A2			316/A4		
	O.D	Thickness	Part No.	PKT Qty	Part No.	PKT Qty	
	1/8	5/16	22	1126	•		
	1/8	3/8	20	1151	•		
	5/32	3/8	20	1137	•		
	5/32	7/16	20	30022	•		
	3/16	7/16	20	1140	•	2762	•
	3/16	1/2	20	1152	•	2782	•
	3/16	3/4	18	1153	•	16135	•
	3/16	7/8	18	33836	•	30391	400
	3/16	1	16	16811	•	19286	400
	3/16	1.1/4	16	16269	300	16900	300
	1/4	1/2	20	6426	•	16822	•
	1/4	9/16	18	1158	•	13888	•
	1/4	5/8	18	1142	•	2766	•
	1/4	3/4	18	1154	•	2783	•
	1/4	7/8	18			30392	100
	1/4	1	16	1155	•	19287	100
	1/4	1.1/4	16	16134	•	16136	100
	5/16	5/8	18	1159	•	2784	•
	5/16	3/4	18	1143	•	2767	•
	5/16	1	16	1156	•	14989	100
	5/16	1.1/4	16	16137	100	13889	100
	3/8	3/4	18	1160	•	2785	•
	3/8	7/8	18			30393	100
	3/8	1	16	1144	•	2769	100
	3/8	1.1/4	16	16138	100	16268	100
	3/8	1.1/2	14	1157	100	16214	100
	3/8	2	3mm			30373	50
	7/16	1.1/8	16			2792	100
	1/2	1	16	1161	•	2787	100
	1/2	1.1/4	14	1145	100	2771	100
	1/2	2	14	16810	50	30219	50
	9/16	1.1/4	14			7543	100
	5/8	1.1/4	16	1162	100	2788	100
	5/8	1.1/2	14	1146	100	2772	100
	3/4	1.1/2	14	1163	100	2789	100
	3/4	1.7/8	12	1148	100	2773	100
	7/8	1.5/8	14	13885	50		
	7/8	1.5/8	10			13891	50
	7/8	2	12	1149	50	2776	50
	1	1.7/8	12	13886	50		
	1	1.7/8	14			13892	50
	1	2	10	1165	50		
	1	2.1/2	10	1150	50	2779	25
	1.1/8	2.1/2	10			2793	20
	1.1/4	2.3/4	10			2794	20
	1.1/2	3.1/4	10			2796	10
	2	3.3/4	4mm			2800	10

● PLEASE REFER TO BOOKLET AT BACK OF THE CATALOGUE FOR PACK QUANTITY.

**FLAT ROUND WASHERS - DIN 9021 (MUDGUARD WASHERS)**

		METRIC			METRIC		
GRADE		304/A2			316/A4		
SIZE	O.D	Thickness	Part No.	PKT Qty	Part No.	PKT Qty	
	M5	15.0	1.2	19881	•	33510	•
	M6	18.0	1.6	19882	•	19889	•
	M8	24.0	2.0	19883	•	33511	300
	M10	30.0	2.5	19884	100		
	M12	37.0	3.0	19885	100	19890	100
	M16	50.0	3.0	19886	50		
	M20	60.0	4.0	19887	50		

**FLAT ROUND WASHERS - DIN 433**

		METRIC			
GRADE		304/A2			
SIZE	O.D	Thickness	Part No.	PKT Qty	
	M2.5	5.0	0.3	30333	400
	M3	6.0	0.5	30246	•

**NEW ZEALAND PRODUCT RANGE • AUSTRALIA - POA**

**SQUARE FLAT WASHER**

		304/A2			316/A4		
SIZE	Width	Thickness	Part No.	PKT Qty	Part No.	PKT Qty	
	M10	50x50	3.0			90121	50
	M12	50x50	3.0	38319	50	90123	50
	M16	50x50	3.0			90125	25
	M20	50x50	4.0			90126	50

IMPERIAL FLAT WASHERS		
IMPERIAL	METRIC	
GAUGE	MIN.	MAX.
10g	2.87mm	3.76mm
12g	2.37mm	3.05mm
14g	1.75mm	2.26mm
16g	1.34mm	1.75mm
18g	1.10mm	1.34mm
20g	0.84mm	1.20mm
22g	0.63mm	0.90mm

• PLEASE REFER TO BOOKLET AT BACK OF THE CATALOGUE FOR PACK QUANTITY.

**SPRING WASHERS SINGLE COIL - DIN 127B**

SIZE

				METRIC		METRIC	
GRADE				304/A2		316/A4	
	O.D	Thickness	Width	Part No.	PKT Qty	Part No.	PKT Qty
M2	4.5	0.5	0.9	10574	•	14162	•
M2.5	5.1	0.6	1.0	5381	•	16656	•
M3	6.2	0.8	1.3	7066	•	4703	•
M4	7.6	0.9	1.5	6119	•	4705	•
M5	9.2	1.2	1.8	3546	•	4707	•
M6	11.8	1.6	2.5	3547	•	4709	•
M8	14.8	2.0	3.0	3548	•	4710	•
M10	18.1	2.2	3.5	3549	•	4712	•
M12	21.1	2.5	4.0	3550	•	4714	•
M14	24.1	3.0	4.5			6851	100
M16	27.1	3.5	5.0	3551	100	4715	100
M18	29.4	3.5	5.0			31074	100
M20	33.6	4.0	6.0	3552	100	4716	100
M24	40.0	5.0	7.0			4718	50
M27	43.0	5.0	7.0			16536	25
M30	48.2	6.0	8.0			4719	25
M36	58.2	6.0	10.0			7150	10

**SPRING WASHERS SINGLE COIL - (MEDIUM SECTION) - ANSI B18.21.1**

SIZE

				METRIC		METRIC	
GRADE				304/A2		316/A4	
	O.D	Thickness	Width	Part No.	PKT Qty	Part No.	PKT Qty
2G	0.172	0.020	0.035	4563	•		
4G	0.209	0.025	0.040	5261	•		
3/32	0.195	0.025	0.040	2802	•		
1/8-5G	0.236	0.031	0.047	6868	•		
1/8-6G	0.250	0.031	0.047	14582	•	2804	•
5/32-8G	0.293	0.040	0.055	5059	•	2805	•
3/16-10G	0.334	0.047	0.620	1447	•	2806	•
1/4	0.489	0.062	0.109	1449	•	2807	•
5/16	0.586	0.078	0.125	1451	•	2808	•
3/8	0.683	0.094	0.141	1453	•	2809	•
7/16	0.779	0.109	0.156			2810	100
1/2	0.873	0.125	0.171	1455	•	2811	300
9/16	0.971	0.141	0.188	19779	100	15264	100
5/8	1.079	0.156	0.203	1458	200	2812	200
3/4	1.271	0.188	0.234	1460	100	2814	100
7/8	1.464	0.219	0.266	19780	50	2815	50
1	0.166	0.250	0.297	19781	50	2816	50
1.1/8	1.853	0.281	0.328			2818	25
1.1/4	2.045	0.312	0.359			2819	25
1.1/2						15258	10

• PLEASE REFER TO BOOKLET AT BACK OF THE CATALOGUE FOR PACK QUANTITY.

**STAINLESSFASTENERS  
PRODUCTCATALOGUE2007**

**BELLEVILLE WASHERS**

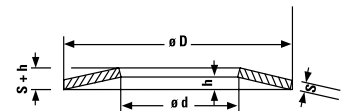
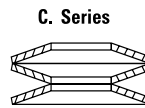
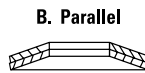
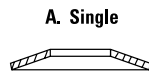
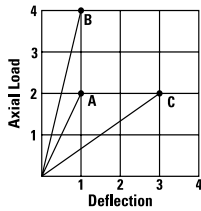
**METRIC**

**GRADE**

**304/A2**

SIZE

	Compressed to 0.75h		d	D	S	h	S+h	Part No.	PKT Qty
	Axial Load	0.75h mm							
M4	18kg	0.15	4.2	8.0	0.40	0.20	0.60	33544	200
M5	28kg	0.19	5.2	10.0	0.50	0.25	0.75	16687	100
M6	60kg	0.22	6.2	12.5	0.70	0.30	1.00	3540	100
M8	93kg	0.26	8.2	16.0	0.90	0.35	1.25	3541	100
M10	140kg	0.34	10.2	20.0	1.10	0.45	1.55	3542	100
M12	268kg	0.41	12.2	25.0	1.50	0.55	2.05	3543	100
M16	356kg	0.52	16.3	31.5	1.75	0.70	1.45	3544	100
M20	597kg	0.67	20.4	40.0	2.25	0.90	3.15	3545	100



**CUP WASHERS**

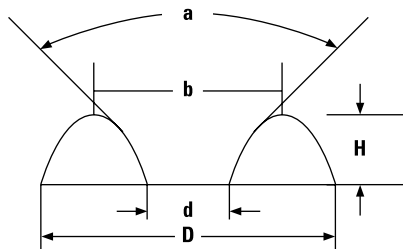
**IMPERIAL**

**GRADE**

**304/A2**

SIZE

	Part No.	PKT Qty
6G	1739	•
8G	1740	•
10G	1741	•
12G	1742	400
14G	5364	400



**DIMENSIONS IN MM**

SIZE	d	D	b	H	MAT. THICK.
NO.6 (3mm)	4.0	11.3	8.0	2.3	0.4
NO.8 (4mm)	4.8	13.7	10.0	2.5	0.4
NO.10 (5mm)	5.7	15.0	12.0	3.3	0.4
NO.12	6.1	17.6	12.5	3.8	0.4
NO.14 (6mm)	7.4	20.0	13.5	3.9	0.4

'a' = 90°

● PLEASE REFER TO BOOKLET AT BACK OF THE CATALOGUE FOR PACK QUANTITY.

**INTERNAL TOOTH LOCK WASHERS - DIN 6797 - TYPE J**

**METRIC**

**GRADE** 304/A2

SIZE

	O.D	Thickness	No. of Teeth	Part No.	PKT Qty
M2.5	5.5	0.4	6	16655	500
M3	6.0	0.4	6	14974	•
M4	8.0	0.5	8	14975	•
M5	10.0	0.6	8	14976	•
M6	11.0	0.7	8	14977	•
M8	15.0	0.8	8	14978	•
M10	18.0	0.9	9	14979	200
M12	20.5	1.0	10	14980	•
M16	26.0	1.2	12	5230	100
M20	33.0	1.4	12	19587	100



**EXTERNAL TOOTH LOCK WASHERS - DIN 6797 - TYPE A**

**METRIC**

**GRADE** 304/A2

SIZE

	O.D	Thickness	No. of Teeth	Part No.	PKT Qty
M3	6.0	0.4	6	14981	•
M4	8.0	0.5	8	14982	•
M5	10.0	0.6	8	14983	•
M6	11.0	0.7	8	14984	•
M8	15.0	0.8	8	14985	•
M10	18.0	0.9	9	14986	400
M12	20.5	1.0	10	14987	•
M16	26.0	1.2	12	6552	100



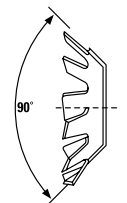
**COUNTERSUNK TOOTH LOCK WASHERS**

**METRIC**

**GRADE** 304/A2

SIZE

	O.D	Thickness	No. of Teeth	Part No.	PKT Qty
M3	6.0	0.4	8	31044	600
M4	8.0	0.4	8	31045	400
M5	10.0	0.5	9	31046	•
M6	12.0	0.5	10	31047	300
M8	16.0	0.6	12	31048	200



• PLEASE REFER TO BOOKLET AT BACK OF THE CATALOGUE FOR PACK QUANTITY.

**EXTERNAL SERRATED TOOTH LOCK WASHERS - DIN 6798 TYPE A**

		METRIC			METRIC			
GRADE		304/A2			316/A4			
SIZE	O.D	Thickness	No. of Teeth	Part No.	PKT Qty	Part No.	PKT Qty	
	M4	8.0	0.5	11	31354	•		
	M5	10.0	0.6	11			30183	•
	M6	11.0	0.7	12	13728	•	19392	800
	M8	15.0	0.8	14			16817	200
	M10	18.0	0.9	16	13729	200	19393	200
	M12	20.5	1.0	16			19394	100
	M16	26.0	1.2	18			30206	100

**INTERNAL SERRATED TOOTH LOCK WASHERS - DIN 6798 - TYPE J**

		METRIC			
GRADE		304/A2			
SIZE	O.D	Thickness	No. of Teeth	Part No.	PKT Qty
	M5	10.0	0.6	8	13724

**CRINKLE, CURVED AND WAVE WASHERS**

TYPE		CRINKLE (BS4463)		CURVED (DIN 137A)		WAVE (DIN 137B)	
GRADE		304/A2		304/A2		304/A2	
SIZE		Part No.	PKT Qty	Part No.	PKT Qty	Part No.	PKT Qty
	M2	14631	•				
	M2.5	9558	•				
	M3	9559	•	15378	•	15375	•
	M4	9560	•	15379	•	7145	•
	M5	9561	•	15380	•	15376	•
	M6	9562	•	15381	•	15377	•
	M8	31247	100			16170	•
	M10	19936	100				

• PLEASE REFER TO BOOKLET AT BACK OF THE CATALOGUE FOR PACK QUANTITY.



**HEXAGON SOCKET CAP SCREWS - DIN 912**

DIAMETER	M2		M2.5	
GRADE	316/A4		316/A4	
LENGTH	Part No.	PKT Qty	Part No.	PKT Qty
4	14583	100	37964	100
5	37966	100	4573	100
6	14584	100	14589	100
8	14585	100	14590	100
10	14586	100	14591	100
12	14587	100	14592	100
16	19144	100	37889	100
20	16945	100	37890	100
KeyA/F mm	1.5		2.0	

DIAMETER	M3		M3		M4		M4	
GRADE	304/A2		316/A4		304/A2		316/A4	
LENGTH	Part No.	PKT Qty	Part No.	PKT Qty	Part No.	PKT Qty	Part No.	PKT Qty
4	19799	100						
6	4360	100	4390	100	5679	100	10339	100
8	4361	100	4391	100	16380	100	4396	100
10	14844	100	4392	100	16355	100	4397	100
12	4362	100	4393	100	16356	100	4398	100
16	16705	100	4394	100	10598	100	4399	100
20	16897	100	4395	100	15847	100	4400	100
25	7140	100	19150	100	16174	100	4401	100
30	19802	100	16664	100	16140	100	4402	100
35	19803	100	16665	100	19807	100	4403	100
40	19804	100	16666	100	19808	100	4404	100
45					19809	100	4405	100
50					10599	100	4406	100
KeyA/F mm	2.5				3.0			



**HEXAGON SOCKET CAP SCREWS - DIN 912**



LENGTH

DIAMETER	M5		M5		M6		M6	
GRADE	304/A2		316/A4		304/A2		316/A4	
	Part No.	PKT Qty	Part No.	PKT Qty	Part No.	PKT Qty	Part No.	PKT Qty
6	19810	100						
8	13788	100	37598	100	30160	100	15384	100
10	15982	100	4407	100	19811	100	30265	100
12	3096	100	4408	100	3105	100	4418	100
16	3097	100	4409	100	3106	100	4419	100
20	3098	100	4410	100	3107	100	4421	100
25	3099	100	4411	100	3109	100	4424	100
30	3100	100	4412	100	3110	100	4426	100
35	3101	100	4413	100	3111	100	4428	100
40	3102	100	4414	100	3113	100	4430	100
45	3103	100	4415	100	3114	100	4433	100
50	3104	100	4416	100	3115	100	4437	100
60			4417	100	14076	50	4438	50
70			19641	100	19813	50	4439	50
75					13818	50		
80							4440	50
90	30159	50					33367	50
100							16528	50
KeyA/F mm		4.0				5.0		

LENGTH

DIAMETER	M8		M8		M10		M10	
GRADE	304/A2		316/A4		304/A2		316/A4	
	Part No.	PKT Qty	Part No.	PKT Qty	Part No.	PKT Qty	Part No.	PKT Qty
10	15504	100						
12	13819	100						
16	3116	100	4443	100	19817	100	4575	100
20	3118	100	4444	100	3126	100	4460	100
25	3119	100	4445	100	3128	100	4461	100
30	3121	100	4446	100	3131	100	4468	100
35	3122	100	4447	100	3133	100	4469	100
40	3123	100	4448	100	3134	100	4470	100
45	3124	100	4450	100	3136	100	4471	100
50	3125	100	4451	100	3138	10	4472	10
55					33520	50		
60	19816	50	4454	50	7142	50	4473	50
70	30161	50	4457	50	31240	50	4474	50
80	30162	50	4458	50	14170	50	4475	50
90			4459	50	14283	50	4476	50
100	33532	50	15910	50	33519	50	30072	50
110	30163	50						
120			33789	50	16502	50		
140					30442	50		
150							19827	25
KeyA/F mm		6.0				8.0		

**HEXAGON SOCKET CAP SCREWS - DIN 912**



LENGTH

LENGTH

LENGTH

DIAMETER		M12		M12		M14	
GRADE		304/A2		316/A4		316/A4	
	Part No.	PKT Qty	Part No.	PKT Qty	Part No.	PKT Qty	
20	16522	50	4477	50			
25	3139	50	4478	50			
30	3141	50	4479	50			
35	3142	50	4480	50			
40	3143	50	4481	50	33733		25
45	3144	50	4482	50			
50	3145	50	4483	50	30448		25
60	7143	25	4484	25			
70	7144	25	4485	25			
80	30164	25	4486	25			
90	14563	25	4487	25			
100			4488	25			
KeyA/F mm		10.0				12.0	

DIAMETER		M16		M16	
GRADE		304/A2		316/A4	
	Part No.	PKT Qty	Part No.	PKT Qty	
25	13820	25	33722	25	
30	13821	25	30893	25	
35	15666	25			
40	13822	25	4489	25	
45	13823	25	4490	25	
50	13824	25	4491	25	
60			4492	25	
70			4493	25	
80			4494	25	
90			4496	25	
100			4499	25	
KeyA/F mm		14.0		14.0	

DIAMETER		M20		M24	
GRADE		316/A4		316/A4	
	Part No.	PKT Qty	Part No.	PKT Qty	
40	4502	10			
50	4505	10	31507	10	
60	4508	10			
70	4511	10			
80	4515	10	30074	10	
90	4516	10			
100	4517	10	30075	10	
KeyA/F mm		17.0		19.0	

**HEXAGON SOCKET CAP SCREWS - ANSI - B18.3 (1960 SERIES)**



LENGTH

DIAMETER	2-56 UNC		4-40 UNC		5-40 UNC	
GRADE	304/A2		304/A2		304/A2	
	Part No.	PKT Qty	Part No.	PKT Qty	Part No.	PKT Qty
3/16	14220	100				
1/4	6804	100	2164	100	7354	100
5/16			10684	100	2170	100
3/8			2165	100	2171	100
1/2			2166	100	2172	100
5/8			2167	100	7917	100
3/4			2168	100	2173	100
1			2169	100		
Key/A/F Inches	5/64		3/32		3/32	

LENGTH

DIAMETER	6-32 UNC		8-32 UNC		10-24 UNC (3/16)	
GRADE	304/A2		304/A2		304/A2	
	Part No.	PKT Qty	Part No.	PKT Qty	Part No.	PKT Qty
3/16	2175	100				
1/4	2176	100	2182	100	4083	100
5/16	19819	100				
3/8	2177	100	2183	100	2188	100
1/2	2178	100	2184	100	2189	100
5/8	2179	100	2185	100	2190	100
3/4	2180	100	2186	100	2191	100
1	2181	100	2187	100	2192	100
1.1/4	4082	100			2193	100
1.1/2			19821	100	2194	100
2					2195	100
Key/A/F Inches	7/64		9/64		5/32	

LENGTH

DIAMETER	1/4 UNC		1/4 UNC		5/16 UNC		5/16 UNC	
GRADE	304/A2		316/A4		304/A2		316/A4	
	Part No.	PKT Qty	Part No.	PKT Qty	Part No.	PKT Qty	Part No.	PKT Qty
3/8	1001	100						
1/2	2206	100	2610	100	2221	100		
5/8	2207	100	2612	100	2222	100		
3/4	2208	100	2614	100	2223	100	2619	100
1	2209	100	2615	100	2224	100	2620	100
1.1/4	2210	100	2616	100	2225	100	2632	100
1.1/2	2211	100	2617	100	2226	100	2635	100
1.3/4	2212	100			2227	100		
2	2213	100	2618	100	2228	100	2639	100
2.1/4	15448	50						
2.1/2	2214	50			2229	50	2645	50
3	2215	50			2230	50		
Key/A/F Inches		5/32				3/16		



**HEXAGON SOCKET CAP SCREWS - ANSI B18.3 (1960 SERIES) UNC  
 BS2470 BSW**

DIAMETER		3/8 UNC		3/8 UNC		7/16 UNC	
GRADE		304/A2		316/A4		304/A2	
LENGTH	Part No.	PKT Qty	Part No.	PKT Qty	Part No.	PKT Qty	
	1/2	2235	100				
	5/8	2236	100				
	3/4	2237	100	2704	100		
	1	2238	100	2707	100	15755	
	1.1/4	2239	100	2712	100		
	1.1/2	2240	100	2715	100	15756	
	1.3/4	2241	100				
	2	2242	100	2719	100		
	2.1/2	2243	50	2721	50		
3	2244	50					
4	33504	50					
KeyA/F Inches		3/16		1/4			

DIAMETER		1/2 UNC		1/2 UNC		1/2 BSW	
GRADE		304/A2		316/A4		316/A4	
LENGTH	Part No.	PKT Qty	Part No.	PKT Qty	Part No.	PKT Qty	
	1	2255	25	2726	50	2738	50
	1.1/4	2256	25	2731	50	2739	50
	1.1/2	2257	25	2734	50	2740	50
	2	2258	25	2735	50	2741	50
	2.1/2	19824	25	2736	25	2742	25
	3	9082	25	2737	25		
	KeyA/F Inches		3/8		3/8		

DIAMETER		5/8 UNC		3/4 UNC	
GRADE		316/A4		316/A4	
LENGTH	Part No.	PKT Qty	Part No.	PKT Qty	
	1.1/4	2744	25		
	1.1/2	2745	25	19594	
	2	2746	25	2749	
	2.1/2	2747	25	2750	
	3	2748	25		
KeyA/F Inches		1/2		5/8	

**HEXAGON SOCKET CAP SCREWS - ANSI - B18.3 (1960 SERIES)**

DIAMETER	10-32 UNF	1/4 UNF	5-16 UNF
GRADE	304/A2	304/A2	304/A2

LENGTH

	Part No.	PKT Qty	Part No.	PKT Qty	Part No.	PKT Qty
1/4	2196	100				
3/8	2197	100	13792	100		
1/2	2198	100	2216	100		
5/8	2199	100	16224	100		
3/4	2200	100	2217	100	2231	50
1	2202	100	2218	100	2232	50
1.1/4	2203	100	2219	100	2233	50
1.1/2	2204	100	2220	100	2234	50
1.3/4	4084	100				
KeyA/F Inches	5/32		3/16		1/4	

DIAMETER	3/8 UNF	7/16 UNF	1/2 UNF
GRADE	304/A2	304/A2	304/A2

LENGTH

	Part No.	PKT Qty	Part No.	PKT Qty	Part No.	PKT Qty
3/4	2245	50				
1	2246	50				
1.1/4	10593	50				
1.1/2	2247	50	15757	50	15759	25
2	19826	50	15758	50	15760	25
2.1/2	4093	50				
KeyA/F Inches	5/16		3/8		3/8	



**BUTTON HEAD SOCKET SCREWS - ISO 7380**



LENGTH

DIAMETER		M3				M4				M5			
GRADE		304/A2		316/A4		304/A2		316/A4		304/A2		316/A4	
	Part No.	PKT Qty	Part No.	PKT Qty	Part No.	PKT Qty	Part No.	PKT Qty	Part No.	PKT Qty	Part No.	PKT Qty	
6	13579	100	30011	100	14413	100	38123	100					
8	3147	100	30012	100	3153	100	38129	100					
10	3149	100	30350	100	3154	100	38124	100	3159	100	38130	100	
12	3150	100	30452	100	3156	100	38136	100	3161	100	38131	100	
16	3152	100	38121	100	3158	100	38125	100	3162	100	38132	100	
20	31009	100	38122	100	14886	100	38126	100	3163	100	38137	100	
25	31010	100	31011	100	14673	100	38127	100	3165	100	33841	100	
30									3167	100	38138	100	
35									33908	100			
40									16872	100			
KeyA/F mm		2.0				2.5				3.0			

LENGTH

DIAMETER		M6				M8				M10			
GRADE		304/A2		316/A4		304/A2		316/A4		304/A2		316/A4	
	Part No.	PKT Qty	Part No.	PKT Qty	Part No.	PKT Qty	Part No.	PKT Qty	Part No.	PKT Qty	Part No.	PKT Qty	
10	3168	100	33761	100									
12	3169	100	38115	100	14273	100							
16	3171	100	38106	100	3187	100	38128	100	13772	50			
20	3184	100	31200	100	3193	100	33959	100	3199	50	38184	50	
25	3185	100	33762	100	3194	100	33842	100	3200	50	38185	50	
30	3186	100	33972	100	3196	100	30267	100	3201	50	15921	50	
35	16821	100			16590	100			6000	50	38187	50	
40	13610	100	33388	100	3197	100	33845	100	13712	50	38186	50	
50	16589	100			3198	100	38189	100	15021	50	38188	50	
60					15302	100							
KeyA/F mm		4.0				5.0				6.0			

LENGTH

DIAMETER		M12										
GRADE		304/A2										
	Part No.											PKT Qty
20												25
25												25
30												25
35												25
40												25
50												25
KeyA/F mm		8.0										

**BUTTON HEAD SOCKET SCREWS - ANSI B18.3**



DIAMETER	6-32 UNC		8-32 UNC	
GRADE	304/A2		304/A2	
	Part No.	PKT Qty	Part No.	PKT Qty
1/4	16564	100		
3/8	19830	100	19832	100
1/2	6848	100	5275	100
3/4			19833	100
1			4072	100
KeyA/F Inches	5/64		3/32	

DIAMETER	10-24 UNC		1/4 UNC		5/16 UNC	
GRADE	304/A2		304/A2		304/A2	
	Part No.	PKT Qty	Part No.	PKT Qty	Part No.	PKT Qty
3/8	2370	100	2378	100		
1/2	2372	100	2379	100		
5/8	2374	100	2380	100	19171	100
3/4	2376	100	2381	100	2385	100
1	2377	100	2383	100	2386	100
1.1/4	13748	100	2384	100	2387	100
1.1/2			15816	100	31378	100
2			15817	100	15818	100
KeyA/F Inches	1/8		5/32		3/16	

DIAMETER	3/8 UNC		1/2 UNC	
GRADE	304/A2		304/A2	
	Part No.	PKT Qty	Part No.	PKT Qty
3/4	2388	50		
1	2389	50		
1.1/4	2390	50	30383	50
1.1/2	16207	50	30384	50
2	16208	50	16978	50
KeyA/F Inches	7/32		5/16	



**BUTTON HEAD SOCKET SCREWS - ANSI B18.3**

DIAMETER		10-32 UNF		1/4 UNF		
GRADE		304/A2		304/A2		
LENGTH	Part No.		PKT Qty	Part No.		PKT Qty
	3/8	2364	100			
	1/2	2365	100	19689		100
	5/8	2366	100			
	3/4	2367	100	19690		100
	1	2368	100	4073		100
KeyA/F Inches		1/8		5/32		

DIAMETER		5/16 UNF		3/8 UNF		
GRADE		304/A2		304/A2		
LENGTH	Part No.		PKT Qty	Part No.		PKT Qty
	1	15373	50	19133		50
	1.1/2	15374	50			
	KeyA/F Inches		3/16		7/32	



**COUNTERSUNK SOCKET SCREWS - DIN 7991**



LENGTH

DIAMETER	M3		M3		M4		M4	
GRADE	304/A2		316/A4		304/A2		316/A4	
	Part No.	PKT Qty	Part No.	PKT Qty	Part No.	PKT Qty	Part No.	PKT Qty
5	19834	100						
6	14633	100	3226	100			16139	100
8	14634	100	3228	100	14637	100	3237	100
10	14635	100	3229	100	14638	100	3239	100
12	14636	100	3232	100	14639	100	3241	100
16	4366	100	3234	100	14640	100	3243	100
20	13717	100			14641	100	3245	100
25					19835	100	19846	100
40					4961	100		
KeyA/F mm		2.0				2.5		

LENGTH

DIAMETER	M5		M5		M6		M6	
GRADE	304/A2		316/A4		304/A2		316/A4	
	Part No.	PKT Qty	Part No.	PKT Qty	Part No.	PKT Qty	Part No.	PKT Qty
10	4368	100	3247	100	14646	100	3256	100
12	14642	100	3249	100	14647	100	3258	100
16	7499	100	3251	100	14648	100	3259	100
20	14643	100	3252	100	14649	100	3261	100
25	14644	100	3253	100	14650	100	3262	100
30	14645	100	3255	100	14651	100	3263	100
35	16591	100	13786	100	14652	100	3264	100
40	14565	100			19328	100	19323	100
50	14566	100			9329	100	16592	100
60							19325	50
70							19326	50
80							19327	50
KeyA/F mm		3.0				4.0		

**COUNTERSUNK SOCKET SCREWS - DIN 7991**



LENGTH

LENGTH

LENGTH

DIAMETER	M8		M8		M10		M10	
GRADE	304/A2		316/A4		304/A2		316/A4	
	Part No.	PKT Qty	Part No.	PKT Qty	Part No.	PKT Qty	Part No.	PKT Qty
12			16593	100				
16	14653	100	3266	100	19837	50		
20	14654	100	3267	100	14660	50	3277	100
25	14655	100	3269	100	14661	50	3279	100
30	14656	100	3270	100	14662	50	3280	100
35	14657	100	3271	100	14663	50	3281	100
40	14658	100	3273	100	14664	50	3283	50
45	37451	100						
50	14659	100	3275	100	14665	50	3284	50
55			31211	50				
60			31170	50			3286	50
70			19963	50	19162	50	15361	50
80							15362	50
100							30973	50
120							37962	25
KeyA/F mm	5.0			6.0				

DIAMETER	M12		M12	
GRADE	304/A2		316/A4	
	Part No.	PKT Qty	Part No.	PKT Qty
20	14666	25	3287	25
25	5264	25	3289	25
30	14667	25	3291	25
35			30282	25
40	14668	25	3293	25
50	14669	25	3295	25
60	31005	25	3298	25
70			3300	25
80			30076	25
90			30077	25
100			30078	25
KeyA/F mm	8.0			

DIAMETER	M16		M20	
GRADE	316/A4		316/A4	
	Part No.	PKT Qty	Part No.	PKT Qty
30	14529	25		
35	14530	25		
40	14531	25	31508	10
45	14532	25		
50	14533	25	30013	10
60	14534	25	30080	10
70	3303	25	30081	10
80	19023	25	31171	10
90	30285	25	31245	10
100	30079	25	30082	10
120	19604	10		
KeyA/F mm	10.0		12.0	

**COUNTERSUNK SOCKET SCREWS - ANSI B18.3**



DIAMETER	4-40 UNC		6-32 UNC		8-32 UNC	
GRADE	304/A2		304/A2		304/A2	
	Part No.	PKT Qty	Part No.	PKT Qty	Part No.	PKT Qty
1/4	19844	100				
3/8			16560	100		
1/2			4919	100		
3/4					4074	100
KeyA/F Inches	1/16		5/64		3/32	

DIAMETER	10-24 UNC		1/4 UNC	
GRADE	304/A2		304/A2	
	Part No.	PKT Qty	Part No.	PKT Qty
3/8	5281	100	2331	100
1/2	2327	100	2332	100
5/8	2328	100	2333	100
3/4	2329	100	2334	100
1	2330	100	2336	100
1.1/4			2337	100
1.1/2			2338	100
2			19441	100
KeyA/F Inches	1/8		5/32	

DIAMETER	5/16 UNC		3/8 UNC		1/2 UNC	
GRADE	304/A2		304/A2		304/A2	
	Part No.	PKT Qty	Part No.	PKT Qty	Part No.	PKT Qty
3/4	2339	100	2344	100		
1	2340	100	2345	100		
1.1/4	2341	100	2346	100		
1.1/2	2342	100	2347	100	16281	25
2	2343	100	2348	100	16282	25
KeyA/F Inches	3/16		7/32		5/16	

DIAMETER	10-32 UNF		1/4 UNF		5/16 UNF		3/8 UNF	
GRADE	304/A2		304/A2		304/A2		304/A2	
	Part No.	PKT Qty	Part No.	PKT Qty	Part No.	PKT Qty	Part No.	PKT Qty
3/8	2321	100						
1/2	2322	100	6284	100				
5/8	2323	100	6285	100				
3/4	2324	100	6286	100	6289	50		
1	2325	100	6287	100	6290	50	6293	50
1.1/4					6291	50	6294	50
1.1/2					7698	50	6295	50
2					6292	50	6296	50
KeyA/F Inches	1/8		5/32		3/16		7/32	



**HEXAGON SOCKET SCREWS - CUP POINT - DIN 916**

DIAMETER		M2		M2.5	
GRADE		304/A2		304/A2	
LENGTH	Part No.	PKT Qty	Part No.	PKT Qty	
	3	10337	100		
	4	33481	100	33484	100
	5			31369	100
	6	33483	100	33767	100
	10			33485	100
KeyA/F mm		0.9		1.3	

DIAMETER		M3		M4		M4			
GRADE		304/A2		316/A4		316/A4			
LENGTH	Part No.	PKT Qty	Part No.	PKT Qty	Part No.	PKT Qty	Part No.	PKT Qty	
	3	1800	●						
	4	1797	●	19077	100	1805	●	19008	100
	5	1802	100			1806	●	10637	100
	6	1803	100			5119	●	3305	100
	8	1804	100			5120	●	3306	100
	10	19847	100			5121	100	3308	100
	12	19848	100			5122	100	3310	100
	16	16660	100			5123	100		
	20	16661	100			15855	100		
	KeyA/F mm		1.5		2.0				

DIAMETER		M5		M6		M6			
GRADE		304/A2		316/A4		316/A4			
LENGTH	Part No.	PKT Qty	Part No.	PKT Qty	Part No.	PKT Qty	Part No.	PKT Qty	
	5	5118	100	19009	100				
	6	1807	100	3311	100	1816	100	3318	100
	8	1808	100	3313	100	1817	100	3319	100
	10	1810	100	3315	100	1820	100	3320	100
	12	1813	100	3316	100	1823	100	3325	100
	16	1814	100	3317	100	1824	100	3326	100
	20	1815	100			1826	100	15466	100
	25	19849	100			19850	100		
	30	15854	100			16884	100		
	KeyA/F mm		2.5		3.0				

● PLEASE REFER TO BOOKLET AT BACK OF THE CATALOGUE FOR PACK QUANTITY.

**HEXAGON SOCKET SET SCREWS - CUP POINT - DIN 916**

DIAMETER		M8		M10		M10			
GRADE		304/A2		316/A4		316/A4			
LENGTH	Part No.	PKT Qty	Part No.	PKT Qty	Part No.	PKT Qty	Part No.	PKT Qty	
	8	1829	100	3327	100	1841	100	15017	100
	10	1831	100	3329	100	1842	100	3335	100
	12	1833	100	3330	100	1844	100	3336	100
	16	1834	100	3331	100	1845	100	3339	100
	20	1835	100	3333	100	1848	100	3341	100
	25	1837	100						
	30	1839	100			1850	100	16662	100
	35	31257	100			1853	100		
	40	10725	100			14209	100		
50	16715	100			13690	100			
KeyA/F mm		4.0		5.0					



DIAMETER		M12		M12		M16			
GRADE		304/A2		316/A4		304/A2			
LENGTH	Part No.	PKT Qty	Part No.	PKT Qty	Part No.	PKT Qty	Part No.	PKT Qty	
	12	14995	50	15061	50	16611	50	16612	50
	16	13899	50	3343	50	16612	50		
	20	13900	50	3345	50	13902	50		
	25	4364	50	3347	50	13903	50		
	30	4365	50	3349	50	13904	50		
	40	13901	50	19465	50	19852	50		
	50	15419	50						
KeyA/F mm		6.0		8.0					

**HEXAGON SOCKET SET SCREWS - CUP POINT - ANSI B18.3**



LENGTH

DIAMETER	4-40 UNC		5-40 UNC		6-32 UNC		8-32 UNC	
GRADE	304/A2		304/A2		304/A2		304/A2	
	Part No.	PKT Qty	Part No.	PKT Qty	Part No.	PKT Qty	Part No.	PKT Qty
1/8	2261	100	2264	100	2270	100	2274	100
3/16			2265	100	2271	100	6490	100
1/4	19853	100	2266	100	2272	100	2275	100
5/16			2267	100				
3/8	2262	100	2268	100	7132	100	2276	100
1/2							2277	100
5/8							2278	100
3/4							2279	100
KeyA/F Inches	0.050		1/16		1/16		5/64	

LENGTH

DIAMETER	10-24 UNC		10-24 UNC		1/4 UNC		1/4 UNC	
GRADE	304/A2		316/A4		304/A2		316/A4	
	Part No.	PKT Qty	Part No.	PKT Qty	Part No.	PKT Qty	Part No.	PKT Qty
3/16	2280	100	2752	100	9093	100		
1/4	2281	100			2293	100	2754	100
5/16	2282	100			2294	100	2755	100
3/8	2283	100	2753	100	2295	100	2756	100
1/2	2284	100			2296	100	2757	100
5/8	10665	100			2297	100		
3/4	2285	100			2298	100	2759	100
1	14168	100			2299	100		
KeyA/F Inches			3/32				1/8	

**HEXAGON SOCKET SET SCREWS - CUP POINT - ANSI B18.3 UNC  
BS2470 BSW**

DIAMETER	5/16 UNC		5/16 UNC		3/8 UNC		3/8 UNC	
GRADE	304/A2		316/A4		304/A2		316/A4	
	Part No.	PKT Qty	Part No.	PKT Qty	Part No.	PKT Qty	Part No.	PKT Qty
5/16	2303	100	2760	100				
3/8	2304	100	2761	100	2312	100	2774	100
1/2	2305	100	2764	100	2313	100	2775	100
5/8	2306	100			2314	100	2777	100
3/4	2308	100			2315	100	2780	100
1	2309	100	2770	100	2316	100	2786	100
1.1/4					4126	100		
Key A/F Inches		5/32				3/16		



DIAMETER	1/2 UNC		1/2 BSW	
GRADE	304/A2		316/A4	
	Part No.	PKT Qty	Part No.	PKT Qty
1/2	2318	50	2790	50
5/8	2319	50		
3/4	2320	50	2801	50
1	15441	50	2795	50
Key A/F Inches		1/4		1/4

**HEXAGON SOCKET SET SCREWS - CUP POINT - ANSI B18.3**



LENGTH

DIAMETER		10-32 UNF		1/4 UNF	
GRADE		304/A2		304/A2	
	Part No.	PKT Qty	Part No.	PKT Qty	
3/16	2286	100			
1/4	2287	100	2300		100
5/16	2288	100			
3/8	2289	100	2301		100
1/2	2290	100	2302		100
5/8	2291	100			
3/4					
1	5271	100			
KeyA/F Inches	3/16		5/32		

DIAMETER		5/16 UNF		3/8 UNF	
GRADE		304/A2		304/A2	
	Part No.	PKT Qty	Part No.	PKT Qty	
5/16	2310	100			
3/8	2311	100	16345		100
1/2			4120		100
3/4			7133		100
1	16957	100	19221		100
KeyA/F Inches	5/32		1/4		

**LOW HEAD SOCKET HEAD CAP SCREWS - DIN 7984**



LENGTH

DIAMETER		M6		M10	
GRADE		304/A2		304/A2	
	Part No.	PKT Qty	Part No.	PKT Qty	
12	19899	100			
16					
20	19900	100			
30			19909		100
35			19910		100
KeyA/F mm	4.0		7.0		



**CHEESE SLOT MACHINE SCREWS - DIN 84**



DIAMETER		M2							
GRADE		316/A4							
LENGTH	Part No.						PKT Qty		
	5	2349						•	
	6	2350						•	
	8	2351						•	
	10	2352						100	
	12	2353						100	
	16	2354						100	
	20	2355						100	
25	2356						100		
DIAMETER		M2.5		M3		M3			
GRADE		316/A4		304/A2		316/A4			
LENGTH	Part No.	PKT Qty	Part No.	PKT Qty	Part No.	PKT Qty			
	4		14372	200					
	5	2357	•	15346	•				
	6	2358	100	3132	•	2369	•		
	8	2359	100	3135	200	2371	•		
	10	2360	100	3140	•	2373	•		
	12	2361	100	3146	•	2375	•		
	16	2362	100	3148	•	2422	•		
	20	2363	100	3155	•	2424	•		
	25	16422	100	3157	200	2427	•		
	30			3160	200				
	35					2429	100		
	40			3164	200				
	50			3170	200				
	DIAMETER		M4		M4		M5		M5
GRADE		304/A2		316/A4		304/A2		316/A4	
LENGTH	Part No.	PKT Qty	Part No.	PKT Qty	Part No.	PKT Qty	Part No.	PKT Qty	
	6	19140	200	2432	100	30859	•		
	8	3172	•	2433	100	3181	100	2444	100
	10	3173	•	2434	•	3182	•	2445	100
	12	3174	•	2435	100	3183	•	2446	100
	16	3175	•	2437	100	3188	100	2447	100
	20	3176	200	2438	100	3191	100	2448	100
	25	3177	200	2439	100	3192	100	2449	100
	30	3178	200	2442	100	3195	100	2450	100
	35					3202	100		
	40	3179	200	2443	100	3205	100	2451	100
	50	3180	200	11101	100	3207	100	2452	100
	60					3209	100	2453	100
	70					3211	100	2454	100
	80			30211	100	3213	100	2455	100
90							2456	100	

• PLEASE REFER TO BOOKLET AT BACK OF THE CATALOGUE FOR PACK QUANTITY.

**CHEESE SLOT MACHINE SCREWS - DIN 84**



LENGTH

DIAMETER		M6		M6		M8		M8	
GRADE		304/A2		316/A4		304/A2		316/A4	
	Part No.	PKT Qty	Part No.	PKT Qty	Part No.	PKT Qty	Part No.	PKT Qty	
10	3236	100	2457	100					
12	3290	100	2458	100	3332	100			
16	3292	100	2459	100	3340	100	2472	100	
20	3294	100	2460	100	3344	100	2473	100	
25	3296	100	2461	100	3348	100	5608	100	
30	3297	100	2462	100	3350	100	2475	100	
35	3299	100	2463	100	3352	100	2476	100	
40	3301	100	2464	100	3354	100	2477	100	
45					3355	100			
50	3302	100	2465	100	3356	100	2478	100	
60	3304	50	2466	50			2479	50	
70	3307	50	2467	50	3358	50	2480	50	
80	3309	50	2468	50	3360	50	2481	50	
90			2469	50	3362	50			
100	3322	50	2470	50	3364	50			

LENGTH

DIAMETER		M10		M10	
GRADE		304/A2		316/A4	
	Part No.	PKT Qty	Part No.	PKT Qty	
20	3386	100	2483	50	
25	3387	100	2484	50	
30			2485	50	
35			2487	50	
40	3389	100	2489	50	
50	3390	100	2492	50	

**COUNTERSUNK SLOT MACHINE SCREWS - DIN 963**



LENGTH

LENGTH

LENGTH

DIAMETER	M2		M2.5		M2.5	
GRADE	316/A4		304/A2		316/A4	
	Part No.	PKT Qty	Part No.	PKT Qty	Part No.	PKT Qty
5	2502	•			2519	•
6	2504	•			2521	•
8	2506	•			2523	100
10	2508	100	3397	100	2525	100
12	2510	100			2527	100
16	2512	100			2530	100
20	2514	100			2533	100

DIAMETER	M3		M3	
GRADE	304/A2		316/A4	
	Part No.	PKT Qty	Part No.	PKT Qty
5	30985	200		
6	3399	•	2535	•
8	3400	•	2536	•
10	3401	•	2539	•
12	3402	•	2540	•
16	3403	•	2542	•
20	3404	200	2544	•
25	3405	•	2546	100
30	3406	200		
40	15846	200		

DIAMETER	M4		M4	
GRADE	304/A2		316/A4	
	Part No.	PKT Qty	Part No.	PKT Qty
6	16184	•	2549	•
8	3407	200	2550	•
10	3408	•	2552	100
12	3409	200	2553	•
16	3410	•	2555	100
20	3411	200	2557	100
25	3412	200	2558	100
30	3413	200	2560	100
40	3414	200	2605	100
50	3415	200	4452	100

• PLEASE REFER TO BOOKLET AT BACK OF THE CATALOGUE FOR PACK QUANTITY.

**COUNTERSUNK SLOT MACHINE SCREWS - DIN 963**



LENGTH	DIAMETER M5		M5		M6		M6	
	GRADE 304/A2		316/A4		304/A2		316/A4	
	Part No.	PKT Qty	Part No.	PKT Qty	Part No.	PKT Qty	Part No.	PKT Qty
8	3416	100	4527	•				
10	3418	•	4528	100	3596	•	4585	100
12	3422	100	4530	•	3599	•	4589	100
16	3475	100	4532	100	3602	100	4593	100
20	3476	100	4535	100	3606	100	4594	100
25	3563	100	4545	100	3611	100	4595	100
30	3564	•	4548	100	3614	100	4596	100
35	3565	100			3620	100	4597	100
40	3566	100	4552	100	3623	100	4598	100
45	13845	100	13858	100	13848	100	13861	100
50	3568	100	4557	100	3626	100	4599	100
60	3569	100	4560	100	3631	50	4600	50
65	13846	100	13859	100	13849	50	13862	50
70	3573	100	4574	100	3633	50	4601	50
75	13847	100	13860	100	13850	50	13863	50
80	3578	100	4577	100	3634	50	4602	50
90			4582	100	3635	50	4603	50
100					3642	50	4604	50

LENGTH	DIAMETER M8		M8		M10		M10	
	GRADE 304/A2		316/A4		304/A2		316/A4	
	Part No.	PKT Qty	Part No.	PKT Qty	Part No.	PKT Qty	Part No.	PKT Qty
12	13851	100						
16	3662	100	4606	100				
20	3652	100	4607	100	3727	100	4691	50
25	3671	100	4608	100	3744	100	4692	50
30	3674	100	4610	100	3745	100	4702	50
35	3677	100	4611	100			4704	50
40	3682	100	4612	100	3746	100	4706	50
45	3683	100						
50	3684	100	4683	100	3747	100	4708	50
60			4684	50	3748	50	4711	50
65	13852	50						
70	3688	50	4685	50				
75	13853	50			13855	50		
80	3736	50	4686	50			4453	50
90	3698	50	4688	50				
100	3700	50	4690	50			4455	50

LENGTH	DIAMETER M12		
	GRADE 316/A4		
	Part No.		PKT Qty
25	4717		50
30	4722		50
40	4723		50
50	4724		50
60	4725		25
80	4726		25

**COUNTERSUNK SLOT MACHINE SCREWS - BS450**



LENGTH

LENGTH

DIAMETER	1/8 BSW		5/32 BSW	
GRADE	304/A2		304/A2	
	Part No.	PKT Qty	Part No.	PKT Qty
1/4	2057	200	2066	200
3/8	2058	•	2067	•
1/2	2059	200	2068	•
5/8	2060	200	2069	200
3/4	2061	200	2070	200
1	2062	200	2071	200
1.1/4	2063	200	2072	200
1.1/2	2064	200	2073	200
2	2065	200	2074	200

DIAMETER	3/16 BSW		3/16 BSW		1/4 BSW		1/4 BSW	
GRADE	304/A2		316/A4		304/A2		316/A4	
	Part No.	PKT Qty	Part No.	PKT Qty	Part No.	PKT Qty	Part No.	PKT Qty
1/4	13829	•	13834	100				
3/8	2075	•	13835	100	2086	100		
1/2	2076	•	2929	100	2087	100	2940	100
5/8	2077	•	2930	100	2088	100	2942	100
3/4	2078	•	2931	100	2089	100	2944	100
1	2079	100	2932	100	2090	100	2945	100
1.1/4	2080	100	2933	100	2091	100	2947	100
1.1/2	2081	100	2934	100	2092	100	2948	100
1.3/4	2082	100			2093	100	13837	100
2	2083	100	2936	100	2094	100	2950	100
2.1/4					2095	50		
2.1/2	2084	100	2937	100	2096	50	2951	50
3	2085	100	2939	100	2097	50	2952	50
4					2098	50		

• PLEASE REFER TO BOOKLET AT BACK OF THE CATALOGUE FOR PACK QUANTITY.

**COUNTERSUNK SLOT MACHINE SCREWS - BS450**

DIAMETER		5/16 BSW		5/16 BSW		3/8 BSW		3/8 BSW	
GRADE		304/A2		316/A4		304/A2		316/A4	
LENGTH	Part No.	PKT Qty	Part No.	PKT Qty	Part No.	PKT Qty	Part No.	PKT Qty	
	1/2	2099	100						
	5/8	2100	100						
	3/4	2101	100	2953	100	2110	100	2961	50
	1	2102	100	2955	100	2111	100	2962	50
	1.1/4	2103	100	2956	100	2112	100	2963	50
	1.1/2	2104	100	2957	100	2113	100	2964	50
	1.3/4					13831	100		
	2	2106	100	2958	100	2114	100	2965	50
	2.1/2	2107	50	2959	50	2115	50	2966	50
	3	2108	50	2960	50	2116	50	2967	50
	3.1/2					30916	50		
4	2109	50			13832	50			



**COUNTERSUNK SLOT MACHINE SCREWS - JG STANDARD**

DIAMETER		1/2 BSW		
GRADE		304/A2		
LENGTH	Part No.			PKT Qty
	1.1/4	2117		

**COUNTERSUNK PHILLIPS MACHINE SCREWS - DIN 965 (H)**



LENGTH

LENGTH

DIAMETER		M2	M2.5	
GRADE		304/A2	304/A2	
LENGTH	Part No.	PKT Qty	Part No.	PKT Qty
	4		37645	100
	5	10654	9372	•
	6	10655	10660	•
	8	10656	10661	•
	10	10657	10662	•
	12	10658	10663	•
	16	10659	33712	•
	20		33713	100

DIAMETER		M3	M3	M4	M4			
GRADE		304/A2	316/A4	304/A2	316/A4			
LENGTH	Part No.	PKT Qty	Part No.	PKT Qty	Part No.	PKT Qty	Part No.	PKT Qty
	4	13736	•					
	5	13737	•					
	6	3895	•			13738	•	
	8	3896	•			3968	•	37734
	10	3897	•			3969	100	37735
	12	3898	•	37849	•	3970	•	16746
	16	3900	•	31329	•	3971	•	37736
	20	3905	•	37850	•	3972	•	37737
	25	3906	•	37851	•	3973	•	37738
	30	3908	•			3974	•	37739
	35					5265	•	
	40	15829	100			5266	100	37740
	50	3910	100			30213	100	
	100					34204	100	

• PLEASE REFER TO BOOKLET AT BACK OF THE CATALOGUE FOR PACK QUANTITY.

**COUNTERSUNK PHILLIPS MACHINE SCREWS - DIN 965 (H)**



LENGTH

DIAMETER	M5		M5		M6		M6	
GRADE	304/A2		316/A4		304/A2		316/A4	
	Part No.	PKT Qty	Part No.	PKT Qty	Part No.	PKT Qty	Part No.	PKT Qty
6	10921	•						
8	3976	•			33506	100		
10	3977	•	37741	100	3987	•		
12	3978	•	16747	•	3988	•	37745	100
16	3979	•	33958	100	3989	•	33925	100
20	3981	•	31325	100	3990	•	19488	100
25	3982	•	33938	100	3991	100	33939	100
30	3983	•	37742	100	3992	100	37746	100
35	5267	•			3993	100	37853	100
40	3985	100	37743	100	3994	100	31327	100
45					33492	100		
50	3986	100	37744	100	3997	100	33747	100
60					13739	50		
65	30996	50			30998	50		
75	30997	50			30999	50		

LENGTH

DIAMETER	M8		M8		M10	
GRADE	304/A2		316/A4		316/A4	
	Part No.	PKT Qty	Part No.	PKT Qty	Part No.	PKT Qty
16	16605	100	33380	100		
20	16416	100	31330	100		
25	15875	100	37747	100	33865	50
30	4425	100	33704	100	33937	50
40	19588	100	37749	100		
50	31238	100	37750	100	33748	50
60			31331	50		
100	19080	50				

• PLEASE REFER TO BOOKLET AT BACK OF THE CATALOGUE FOR PACK QUANTITY.



**COUNTERSUNK PHILLIPS MACHINE SCREWS - BS450**



LENGTH

LENGTH

LENGTH

DIAMETER	1/8 BSW	5/32 BSW		
----------	---------	----------	--	--

GRADE	304/A2		304/A2	
-------	--------	--	--------	--

	Part No.	PKT Qty	Part No.	PKT Qty
1/4	13691	●	4064	●
3/8			14698	●
1/2			5061	●
1			19973	100

DIAMETER	3/16 BSW	3/16 BSW	1/4 BSW	1/4 BSW
----------	----------	----------	---------	---------

GRADE	304/A2		316/A4	304/A2		316/A4	
-------	--------	--	--------	--------	--	--------	--

	Part No.	PKT Qty	Part No.	PKT Qty	Part No.	PKT Qty	Part No.	PKT Qty
1/4	2138	●						
3/8	2139	●	14256	100				
1/2	2140	●	14257	●	2147	●		
5/8	2141	●			2148	100		
3/4	2142	●	14258	100	2149	100	14266	100
1	2143	●	14259	100	2150	100	14267	100
1.1/4	2144	●	14260	100	2151	100	6357	100
1.1/2	2145	●	14261	100	2152	100	14268	100
1.3/4	13869	100	14262	100	30940	100		
2	2146	100	14263	100	2153	100	4800	100
2.1/2	9611	100	14264	100	4065	50		
3	6688	100	14265	100	6691	50		
4					13870	50		

DIAMETER	5/16 BSW		
----------	----------	--	--

GRADE	304/A2		
-------	--------	--	--

	Part No.	PKT Qty
3/4	14484	100
1	14485	100
1.1/4	16604	100
1.1/2	14486	100
2	14487	100
2.1/2	14488	50
3	14489	50

● PLEASE REFER TO BOOKLET AT BACK OF THE CATALOGUE FOR PACK QUANTITY.

**COUNTERSUNK PHILLIPS MACHINE SCREWS - ANSI B18.6.3**

**DIAMETER**      2-56 UNC      4-40 UNC

**GRADE**      304/A2      304/A2

LENGTH

	Part No.	PKT Qty	Part No.	PKT Qty
3/16	9368	•		
1/4	1959	•	1964	•
5/16			4063	•
3/8	1960	•	1965	100
1/2	1961	•	1966	•
5/8	1962	•	1967	•
3/4			1968	•
1			1969	•

**DIAMETER**      6-32 UNC      8-32 UNC

**GRADE**      304/A2      304/A2

LENGTH

	Part No.	PKT Qty	Part No.	PKT Qty
1/4	1970	•	1979	100
5/16	7888	•		
3/8	1971	•	1980	•
1/2	1972	•	1981	•
5/8	1973	•	1982	•
3/4	1974	•	1983	•
1	1975	•	1984	100
1.14	1976	•	1985	100
1.1/2	1977	100	1986	100
2	1978	100	1987	100

**DIAMETER**      12-24 UNC

**GRADE**      304/A2

LENGTH

	Part No.	PKT Qty
1/2	19362	100

**DIAMETER**      10-32 UNF

**GRADE**      304/A2

LENGTH

	Part No.	PKT Qty
3/8	1989	•
1/2	1990	•
5/8	1991	•
3/4	1992	•
1	1993	100
1.1/4	1994	100
1.1/2	1995	100
2	1996	100

• PLEASE REFER TO BOOKLET AT BACK OF THE CATALOGUE FOR PACK QUANTITY.



**PAN SLOT MACHINE SCREWS - DIN 85**



LENGTH

<b>DIAMETER</b>		<b>M2.5</b>	
<b>GRADE</b>		<b>304/A2</b>	
LENGTH		<b>Part No.</b>	<b>PKT Qty</b>
	12	30982	100

LENGTH

<b>DIAMETER</b>		<b>M3</b>		<b>M3</b>	
<b>GRADE</b>		<b>304/A2</b>		<b>316/A4</b>	
LENGTH		<b>Part No.</b>	<b>PKT Qty</b>	<b>Part No.</b>	<b>PKT Qty</b>
	6	3765	●	4729	●
	8	3768	●	4732	●
	10	3770	●	4733	●
	12	3775	●	4736	●
	16	3778	●	4737	●
	20	3780	●	4738	100
	25	3789	200	31617	100
	30	3792	200	4739	100

LENGTH

<b>DIAMETER</b>		<b>M4</b>		<b>M4</b>	
<b>GRADE</b>		<b>304/A2</b>		<b>316/A4</b>	
LENGTH		<b>Part No.</b>	<b>PKT Qty</b>	<b>Part No.</b>	<b>PKT Qty</b>
	6	10579	●	4740	●
	8	3849	●	4741	100
	10	3850	●	4742	●
	12	3851	●	4743	●
	16	3852	●	4744	100
	20	3853	200	4745	100
	25	3854	200	4746	100
	30	3855	200	31531	100
	35	30083	200		
	40	3856	200		
	50	16183	200	9588	100

● PLEASE REFER TO BOOKLET AT BACK OF THE CATALOGUE FOR PACK QUANTITY.

**PAN SLOT MACHINE SCREWS - DIN 85**



LENGTH

DIAMETER	M5		M5		M6		M6	
GRADE	304/A2		316/A4		304/A2		316/A4	
	Part No.	PKT Qty	Part No.	PKT Qty	Part No.	PKT Qty	Part No.	PKT Qty
8	6517	●						
10	3857	●	4748	100	3869	●	4756	100
12	3858	●	4751	100	3870	100	4757	100
16	3859	●	4752	100	3871	100	4758	100
20	3860	●	4753	100	3874	100	4759	100
25	3861	●	4754	100	3875	100	4760	100
30	3862	100	4755	100	3876	100	4764	100
35	3863	100			3877	100		
40	3864	100	31522	100	3878	100	31523	100
45	3865	100			3879	100		
50	3866	100	4464	100	3880	100	14759	100
60	3867	100			3881	50	31210	50
65	33391	100			33393	50		
75	33392	100						

LENGTH

DIAMETER	M8		M8		M10	
GRADE	304/A2		316/A4		316/A4	
	Part No.	PKT Qty	Part No.	PKT Qty	Part No.	PKT Qty
12	16517	100	31524	100		
16	16518	100	31525	100		
20	16261	100	19086	100		
25	14299	100	31526	100	31532	50
30	14082	100	31527	100	30876	50
35			31528	100		
40	16519	100	31529	100	31533	50
50	16520	100	31530	100	31534	50

● PLEASE REFER TO BOOKLET AT BACK OF THE CATALOGUE FOR PACK QUANTITY.

**PAN PHILLIPS MACHINE SCREWS - DIN 7985 (H)**



LENGTH

LENGTH

DIAMETER	M2		M2.5	
GRADE	304/A2		304/A2	
	Part No.	PKT Qty	Part No.	PKT Qty
4	19916	•	9371	•
5	10645	•	10649	•
6	7147	•	7148	•
8	10646	•	10650	•
10	10647	•	10651	•
12	10648	•	10652	•
16	9136	•	10653	•
20			30459	100
25			33711	100

DIAMETER	M3		M3		M4		M4	
GRADE	304/A2		316/A4		304/A2		316/A4	
	Part No.	PKT Qty	Part No.	PKT Qty	Part No.	PKT Qty	Part No.	PKT Qty
4	33344	•						
6	3998	•	16631	•	13731	•	16632	•
8	3999	•	19601	•	4007	•	33940	100
10	4000	•	16629	•	4008	•	33941	100
12	5117	•	16630	•	4009	•	33732	•
16	4002	•	37724	100	4010	•	16952	•
20	4003	•	37725	•	4011	•	37727	100
25	4004	•	37863	100	4012	•	37728	100
30	4005	•			4013	•	37729	100
35	16628	100			13732	100		
40	13730	100			15877	100		
50	4006	100			30212	100	37730	100

• PLEASE REFER TO BOOKLET AT BACK OF THE CATALOGUE FOR PACK QUANTITY.

**PAN PHILLIPS MACHINE SCREWS - DIN 7985 (H)**

DIAMETER		M5		M5		M6		M6	
GRADE		304/A2		316/A4		304/A2		316/A4	
LENGTH	Part No.	PKT Qty	Part No.	PKT Qty	Part No.	PKT Qty	Part No.	PKT Qty	
	8	13733	100			13734	100		
	10	4014	●	33942	100	4021	100		
	12	4015	●	30225	100	4030	100	30435	100
	16	4016	●	33943	100	4032	●	33926	100
	20	4017	●	31332	100	4035	100	33944	100
	25	4018	●	31333	100	4039	100	31336	100
	30	4019	●	33760	100	4041	100	33945	100
	35	19893	100			4044	100	37865	100
	40	4020	100	37731	100	4046	100	33946	100
	50	30881	100	37732	100	4047	100	31335	100
	60					15876	50		
	65	30991	100			30993	50		
75	30992	100			30994	50			



DIAMETER		M8	
GRADE		304/A2	
LENGTH	Part No.	PKT Qty	
	20	14298	100
	25	15813	100
	30	19589	100
	40	19590	100
	50	30376	100

● PLEASE REFER TO BOOKLET AT BACK OF THE CATALOGUE FOR PACK QUANTITY.

**PAN PHILLIPS MACHINE SCREWS - BS450**



**DIAMETER** 1/8 BSW

**GRADE** 304/A2

LENGTH

	Part No.	PKT Qty
1/2	14478	•
3/4	4145	•
1	30397	•

**DIAMETER** 3/16 BSW      3/16 BSW      1/4 BSW      1/4 BSW

**GRADE** 304/A2      316/A4      304/A2      316/A4

LENGTH

	Part No.	PKT Qty	Part No.	PKT Qty	Part No.	PKT Qty	Part No.	PKT Qty
1/4	2122	•						
3/8	2123	•			7102	100		
1/2	2124	•	14245	100	2131	100		
5/8	2125	•			2132	100		
3/4	2126	•	14246	100	2133	100	14250	100
1	2127	•	14247	100	2134	100	14251	100
1.1/4	2128	100	14712	100	2135	100	14252	100
1.1/2	2129	100	14248	100	2136	100	14253	100
1.3/4	30944	100			30941	100		
2	2130	100	14249	100	2137	100	14254	100
2.1/2	9612	100	14713	100	9613	50		
3	6692	100	14714	100	6273	50	14255	50
3.1/2					31433	50		
4					30943	50		

**DIAMETER** 5/16 BSW

**GRADE** 304/A2

LENGTH

	Part No.	PKT Qty
3/4	14715	100
1	14479	100
1.1/2	14480	100
1.3/4	5346	100
2	14481	100
2.1/2	14482	50
3	14483	50

• PLEASE REFER TO BOOKLET AT BACK OF THE CATALOGUE FOR PACK QUANTITY.

**PAN PHILLIPS MACHINE SCREWS - ANSI B18.6.3**

**DIAMETER**      2-56 UNC      4-40 UNC

**GRADE**      304/A2      304/A2

LENGTH

	Part No.	PKT Qty	Part No.	PKT Qty
3/16	14071	•	5252	•
1/4	1881	•	1887	•
5/16			4144	•
3/8	1883	•	1888	•
1/2	1884	•	1889	•
5/8	1885	•	1890	•
3/4	1886	•	1891	•
1			1892	•

**DIAMETER**      6-32 UNC      8-32 UNC

**GRADE**      304/A2      304/A2

LENGTH

	Part No.	PKT Qty	Part No.	PKT Qty
3/16	16775	•		
1/4	1893	•	1903	•
5/16	4146	•		
3/8	1894	•	1904	•
1/2	1895	•	1905	•
5/8	1896	•	1906	•
3/4	1897	•	1907	•
1	1898	•	1908	100
1.1/4	1900	•	1909	100
1.1/2	1901	100	1910	100
1.3/4			5256	100
2	1902	100	1911	100

**DIAMETER**      10-32 UNF

**GRADE**      304/A2

LENGTH

	Part No.	PKT Qty
1/4	1912	•
3/8	1913	•
1/2	1914	•
5/8	1915	100
3/4	1916	•
1	1917	100
1.1/4	1918	100
1.1/2	1919	100
2	1920	100

• PLEASE REFER TO BOOKLET AT BACK OF THE CATALOGUE FOR PACK QUANTITY.





**ROUND SLOT MACHINE SCREWS - BS450**



LENGTH

LENGTH

LENGTH

DIAMETER	1/8 BSW		5/32 BSW	
GRADE	304/A2		304/A2	
	Part No.	PKT Qty	Part No.	PKT Qty
1/4	1997	•	2006	•
3/8	1998	•	2007	•
1/2	1999	•	2008	200
5/8	2000	200	2009	200
3/4	2001	200	2010	200
1	2002	200	2011	200
1.1/4	2003	200	2012	200
1.1/2	2004	200	2013	200
2	2005	200	2014	200

DIAMETER	3/16 BSW		3/16 BSW		1/4 BSW		1/4 BSW	
GRADE	304/A2		316/A4		304/A2		316/A4	
	Part No.	PKT Qty	Part No.	PKT Qty	Part No.	PKT Qty	Part No.	PKT Qty
1/4	2015	•	13948	100				
3/8	2016	•	13949	•	2027	100		
1/2	2017	•	2905	•	2028	100	2916	100
5/8	2018	•	2907	100	2029	100	2918	100
3/4	2019	•	2908	100	2030	100	2919	100
1	2020	100	2909	100	2031	100	2921	100
1.1/4	2021	100	2911	100	2032	100	2922	100
1.1/2	2022	100	2912	100	2033	100	2923	100
1.3/4	2023	100			2034	100		
2	2024	100	2913	100	2035	100	2925	100
2.1/4					2036	100		
2.1/2	2025	100	2914	100	2037	50	2926	50
3	2026	100	2915	100	2038	50	2927	50
4					2039	50	5589	50

DIAMETER	5/16 BSW		5/16 BSW		3/8 BSW		3/8 BSW	
GRADE	304/A2		316/A4		304/A2		316/A4	
	Part No.	PKT Qty	Part No.	PKT Qty	Part No.	PKT Qty	Part No.	PKT Qty
1/2	2040	100			13943	100		
5/8	2041	100						
3/4	2042	100	31535	100	2050	100	31536	50
1	2043	100	30952	100	2051	100	30949	50
1.1/4	2044	100	30951	100	2052	100	31537	50
1.1/2	2045	100	4309	100	2053	100		
1.3/4	2046	100						
2	2047	100			2054	100	30950	50
2.1/2	2048	50	4311	50	2055	50		
3	2049	50	30953	50	2056	50		
4	30922	50			30921	50		

• PLEASE REFER TO BOOKLET AT BACK OF THE CATALOGUE FOR PACK QUANTITY.

**RAISED COUNTERSUNK SLOT MACHINE SCREWS - DIN 964**

**DIAMETER** M6

**GRADE** 304/A2

LENGTH

	Part No.	PKT Qty
25	10629	100

**RAISED COUNTERSUNK PHILLIPS MACHINE SCREWS - DIN 966 (H)**

**DIAMETER** M4

**GRADE** 304/A2

LENGTH

	Part No.	PKT Qty
10	11114	•
16	11117	•
25	11119	•

**DIAMETER** M5

**GRADE** 304/A2

LENGTH

	Part No.	PKT Qty
16	19762	•
20	19763	•
25	19665	100
50	19767	100

● PLEASE REFER TO BOOKLET AT BACK OF THE CATALOGUE FOR PACK QUANTITY.





**MUSH PHILLIPS MACHINE SCREWS - AS1427**

DIAMETER	M5	M6			
GRADE	304/A2	304/A2			
LENGTH	Part No.	PKT Qty	Part No.	PKT Qty	
	20	30389	100		
	25	30386	100	30387	100
	30			16606	100
	40			30388	100

**MUSH PHILLIPS MACHINE SCREWS - BS450 (BSW)**

DIAMETER	3/16 BSW	1/4 BSW			
GRADE	304/A2	304/A2			
LENGTH	Part No.	PKT Qty	Part No.	PKT Qty	
	1/2	16600	●	30100	100
	5/8	19117	●		
	3/4	19118	●	16886	100
	1	19119	100	16887	100
	1.1/4	7179	100		
	1.1/2	19120	100		

In addition to corrosion being caused by exposure of uncoated materials, it is also caused or enhanced by the combination of dissimilar or incompatible materials.

The following chart gives guidelines for the selection of materials or finishes based on this galvanic chart.

BASE METAL	FASTENER METAL					
	Zinc/ Galvanised Steel	Aluminium	Steel, Cast Iron	Brass, Copper, Bronze, Monel	Stainless '4' Series	Stainless '3' Series
Zinc/ Galv. Steel	A	B	B	C	C	C
Aluminium	A	A	B	C	N/R	B
Steel, Cast Iron	AD	A	A	C	C	B
Brass, Copper, Bronze, Monel	ADE	AE	AE	A	A	B
Stainless '4' Series	ADE	AE	AE	A	A	A
Stainless '3' Series	ADE	AE	AE	AE	A	A

KEY

- A** The corrosion of the base metal is not increased by the fastener
- B** The corrosion of the base metal is marginally increased by the fastener
- C** The corrosion of the base metal may be markedly increased by the fastener
- D** The plating on the fastener is rapidly consumed, leaving the bare fastener material
- E** The corrosion of the fastener is increased by the base metal
- NR** Not recommended

● PLEASE REFER TO BOOKLET AT BACK OF THE CATALOGUE FOR PACK QUANTITY.

**SUGGESTED HOLE SIZES FOR TYPES AB, B AND BP THREAD FORMING TAPPING SCREWS AND TYPES BF AND BT THREAD CUTTING TAPPING SCREWS**

NOMINAL SCREW SIZE	HOLE DIAMETER			CLOSEST DRILL SIZE TO MEAN HOLE DIAMETER	
	MAX	MEAN	MIN	DRILL SIZE	DRILL DIA.
0-48	0.049	0.046	0.043	56	0.0465
1-42	.063	.059	.055	53	.0595
2-32	.077	.072	.067	49	.073
3-28	.090	.084	.078	45	.082
4-24	.103	.096	.089	41	.096
5-20	.114	.107	.100	36	.1065
6-20	.124	.116	.108	32	.116
7-19	.138	.129	.120	30	.1285
8-18	.148	.138	.128	29	.136
10-16	.170	.159	.148	21	.159
12-14	.194	.182	.169	14	.182
1/4-14	.226	.211	.196	4	.209
5/16-12	.289	.270	.251	1	.272
3/8-12	.356	.333	.310	Q	.332
7/16-10	.413	.386	.359	W	.386
1/2-10	.480	.449	.418	29/64	.4531

**SELF TAPPING SCREWS CONVERSION CHART**

DESCRIPTION	CODE	DIN
PAN SLOT STS	PSST	7971
CSK SLOT STS	CSST	7972
PAN PHILLIPS STS	PXST	7981
CSK PHILLIPS STS	CXST	7982
RSD CSK SLOT	RCSST	7973
RSD CSK PHILLIP	RCXST	7983

SIZE			LENGTH	
IMPERIAL	METRIC		IMPERIAL INCHES	METRIC CM
4# GAUGE	2.9		1/4	7
6# GAUGE	3.5		3/8	9.5
8# GAUGE	4.2		1/2	13
10# GAUGE	4.8		5/8	16
12# GAUGE	5.5		3/4	19
14# GAUGE	6.3		7/8	22
			1	25
			1.1/4	32
			1.1/2	38
			1.3/4	45
			2	50
			2.1/4	57
			2.1/2	63
			2.3/4	69
			3	75
			3.1/2	88
			4	100

**BUGLE BATTEN SCREWS - TYPE 17 WITH NIBS**

**DIAMETER** 14G

**GRADE** 304/A2

LENGTH

LENGTH	Part No.	PKT Qty
50	33827	250
75	37876	100
100	31164	100

**COUNTERSUNK SLOT WOOD SCREWS - DIN 97**

**DIAMETER** 8G

**GRADE** 316/A4

LENGTH

LENGTH	Part No.	PKT Qty
3/4	2881	100
1.1/4	2883	100

**DIAMETER** 10G

**12G**

**GRADE** 316/A4

**316/A4**

LENGTH

LENGTH	Part No.	PKT Qty	Part No.	PKT Qty
1	2885	100		
1.1/2	2887	100		
2	2890	100	2894	100
2.1/2	2891	100		
3			2898	100

**DIAMETER** 14G

**GRADE** 316/A4

LENGTH

LENGTH	Part No.	PKT Qty
4	2902	100



**COUNTERSUNK PHILLIPS WOOD SCREWS - JIS B112**

DIAMETER	4G	6G
GRADE	304/A2	304/A2

LENGTH	Part No.	PKT Qty	Part No.	PKT Qty
	1/2	1735	200	
5/8	1737	•	1743	200
3/4			1744	200
1			1745	200

DIAMETER	8G	10G
GRADE	304/A2	304/A2

LENGTH	Part No.	PKT Qty	Part No.	PKT Qty
	3/4	1746	200	
1	1747	200	1750	100
1.1/4	1748	200	1751	100
1.1/2	1749	200	1752	100
1.3/4			1753	100
2			1754	100

DIAMETER	12G	14G
GRADE	304/A2	304/A2

LENGTH	Part No.	PKT Qty	Part No.	PKT Qty
	1.1/4	1755	100	
1.1/2	1756	100		
2	1757	100	1759	100
2.1/2	1758	100	1760	100
3			1761	100

DIAMETER	16G
GRADE	304/A2

LENGTH	Part No.	PKT Qty
	4	1762





**COUNTERSUNK SLOT SELF TAPPING SCREWS - ANSI B18.6.4**

LENGTH	6G		8G		10G	
	Part No.	PKT Qty	Part No.	PKT Qty	Part No.	PKT Qty
1/2	2859	100				
5/8	2860	100	2865	•		
3/4	2861	100			2871	100
1					2872	100

**NEW ZEALAND PRODUCT RANGE • AUSTRALIA - POA**

**COUNTERSUNK SQUARE DRIVE CHIPBOARD SCREWS WITH RIBS**



METRIC	8G / 4.0mm #2				10G / 5.0mm #2				
	Length	Part No.	PKT Qty	Part No.	PKT Qty	Part No.	PKT Qty	Part No.	PKT Qty
25mm	1	38242	200						
30mm	1.1/4	38174	200						
40mm	1.1/2	38262	200						
45mm	1.3/4	38264	200						
50mm	2	38334	100	38177	100				
63mm	2.1/2					38175	100	38335	100
75mm	3					38176	100	38241	100

**COUNTERSUNK SQUARE DRIVE TYPE 17CHIPBOARD SCREW**



METRIC	6G / 3.5mm #1			10G / 5.0mm #2		
	Length	Part No.	PKT Qty	Part No.	PKT Qty	PKT Qty
20mm	3/4	38222	200		38224	200
25mm	1	38223	200			
40mm	1.1/2				38547	200
50mm	2				38548	200
75mm	3				38549	200

• PLEASE REFER TO BOOKLET AT BACK OF THE CATALOGUE FOR PACK QUANTITY.



**COUNTERSUNK PHILLIPS SELF TAPPING SCREWS - ANSI B18.6.4**

DIAMETER		4G		4G	
GRADE		304/A2		316/A4	
LENGTH	Part No.	PKT Qty	Part No.	PKT Qty	
	1/4	13871	•		
	3/8	1349	•	19670	•
	1/2	1346	•	13874	•
	5/8	1350	•	19671	100
	3/4	1348	•	13875	•
	1	13872	•	19672	•

DIAMETER		6G		6G	
GRADE		304/A2		316/A4	
LENGTH	Part No.	PKT Qty	Part No.	PKT Qty	
	3/8	1357	•		
	1/2	1354	•	13876	•
	5/8	1358	•	19673	•
	3/4	1356	•	14600	•
	1	1351	•	13877	•
	1.1/4	1353	•	14601	100
	1.1/2	1352	•	19674	100
	1.3/4	30956	200		
	2	16527	200		

DIAMETER		8G		8G	
GRADE		304/A2		316/A4	
LENGTH	Part No.	PKT Qty	Part No.	PKT Qty	
	3/8	1365	•	19675	•
	1/2	1362	•	16444	•
	5/8	1366	•	19676	•
	3/4	1364	•	13878	•
	1	1359	•	13879	100
	1.1/4	1361	•	13880	100
	1.1/2	1360	200	13881	100
	1.3/4	19975	200	13882	100
	2	1363	200	30266	100
	2.1/2	16448	100		
	3	16449	100		

● PLEASE REFER TO BOOKLET AT BACK OF THE CATALOGUE FOR PACK QUANTITY.



**COUNTERSUNK PHILLIPS SELF TAPPING SCREWS - ANSI B18.6.4**

DIAMETER		10G		10G	
GRADE		304/A2		316/A4	
LENGTH	Part No.	PKT Qty	Part No.	PKT Qty	
	3/8	1335	●		
	1/2	1332	●	19494	100
	5/8	1336	●	19677	100
	3/4	1334	●	14602	100
	1	1329	●	14603	100
	1.1/4	1331	●	14604	100
	1.1/2	1330	●	16917	100
	1.3/4	16927	100		
	2	1333	●	19155	100
2.1/2	16450	100	38079	100	
3	16451	100			

DIAMETER		12G		12G	
GRADE		304/A2		316/A4	
LENGTH	Part No.	PKT Qty	Part No.	PKT Qty	
	1/2	13873	●		
	5/8	31538	●		
	3/4	1341	●	37711	100
	1	1337	●	19156	100
	1.1/4	1339	●	19158	100
	1.1/2	1338	●	19157	100
	1.3/4	19777	●		
	2	1340	100	19678	100
	2.1/2	15853	100	30144	100
3	16881	100			

DIAMETER		14G		14G	
GRADE		304/A2		316/A4	
LENGTH	Part No.	PKT Qty	Part No.	PKT Qty	
	3/4	14146	100		
	1	1342	100	34206	100
	1.1/4	1344	100		
	1.1/2	1343	100	19679	100
	1.3/4	19778	100		
	2	1345	100	19680	100
	2.1/2	19253	100		
	3	19254	100		

● PLEASE REFER TO BOOKLET AT BACK OF THE CATALOGUE FOR PACK QUANTITY.

**PAN SLOT SELF TAPPING SCREWS - ANSI B18.6.4**

DIAMETER		6G		8G	
GRADE		316/A4		316/A4	
LENGTH		Part No.	PKT Qty	Part No.	PKT Qty
	3/8	2822	100	2827	•
	1/2	2823	100	2828	•
	5/8	2824	•	2829	100
	3/4	2825	100	2830	100
	1	2826	100	2831	100
	1.1/4				

DIAMETER		10G		12G	
GRADE		316/A4		316/A4	
LENGTH		Part No.	PKT Qty	Part No.	PKT Qty
	1/2	2833	100		
	3/4	2836	100	2840	100
	1			2841	100
	1.1/4			2842	100
	1.1/2	2839	100		
	2			2844	100

**NEW ZEALAND PRODUCT RANGE • AUSTRALIA - POA**

**COUNTERSUNK POZI SELF TAPPING SCREWS**

DIAMETER		4G / 3.0mm		6G / 3.5mm		8G / 4.0mm		10G / 5.0mm		12G		
GRADE		304/A2		304/A2		304/A2		304/A2		304/A2		
METRIC	Length	Part No.	PKT Qty	Part No.	PKT Qty	Part No.	PKT Qty	Part No.	PKT Qty	Part No.	PKT Qty	
	25mm	3/8	38230	200	1435	200	1443	200				
	13mm	1/2	1424	200	1432	200	1440	200	90031	100		
	16mm	5/8	1428	200	1436	200	1444	200	1413	100		
	20mm	3/4	1426	200	1434	200	1442	200	1411	100		
	25mm	1			1429	200	1437	200	1406	100		
	30mm	1.1/4			1431	200	1439	200	1408	100		
	40mm	1.1/2			1430	200	1438	200	1407	100	38231	100
	50mm	2			90033	200	1441	200	1410	100		
	63mm	2.1/2					90034	200	90032	100		
	75mm	3							37621	100		

• PLEASE REFER TO BOOKLET AT BACK OF THE CATALOGUE FOR PACK QUANTITY.

**PAN PHILLIPS SELF TAPPING SCREWS - ANSI B18.6.4**



DIAMETER		2G			
GRADE		304/A2			
LENGTH		Part No.		PKT Qty	
	1/4	4235		200	
	3/8	16349		200	
	1/2	19112		200	

DIAMETER		4G		4G	
GRADE		304/A2		316/A4	
LENGTH		Part No.	PKT Qty	Part No.	PKT Qty
	1/4	1308	•	13930	•
	3/8	1310	•	13931	•
	1/2	1307	•	13932	•
	5/8	1312	•	19681	•
	3/4	1309	•	13933	•
	1	13923	•	19682	100

DIAMETER		6G		6G	
GRADE		304/A2		316/A4	
LENGTH		Part No.	PKT Qty	Part No.	PKT Qty
	1/4	1317	•		
	3/8	1319	•	16438	•
	1/2	1316	•	13934	•
	5/8	1320	•	19683	•
	3/4	1318	•	14593	•
	1	1313	•	14594	•
	1.1/4	1315	•	19684	100
	1.1/2	1314	•	19685	100
	1.3/4	30932	200		
	2	16526	200		

• PLEASE REFER TO BOOKLET AT BACK OF THE CATALOGUE FOR PACK QUANTITY.

**PAN PHILLIPS SELF TAPPING SCREWS - ANSI B18.6.4**



LENGTH

DIAMETER		8G		8G	
GRADE		304/A2		316/A4	
	Part No.	PKT Qty	Part No.	PKT Qty	
1/4	16783	•	13935	100	
3/8	1327	•	16439	•	
1/2	1324	•	14595	•	
5/8	1328	•	19686	•	
3/4	1326	•	13936	•	
1	1321	•	13937	100	
1.1/4	1323	•	14596	100	
1.1/2	1322	200	19151	100	
1.3/4	13925	200			
2	1325	200	15020	100	
2.1/2	16452	100			
3	16453	100			

LENGTH

DIAMETER		10G		10G	
GRADE		304/A2		316/A4	
	Part No.	PKT Qty	Part No.	PKT Qty	
3/8	1296	•			
1/2	1293	•	16440	100	
5/8	1297	•	19550	100	
3/4	1295	•	14597	100	
1	1290	•	13607	100	
1.1/4	1292	•	14598	100	
1.1/2	1291	•	13938	100	
1.3/4	13929	100			
2	1294	•	19687	100	
2.1/2	16454	100	38077	100	
3	16455	100	38078	100	

LENGTH

DIAMETER		12G		12G		14G		14G	
GRADE		304/A2		316/A4		304/A2		316/A4	
	Part No.	PKT Qty	Part No.	PKT Qty	Part No.	PKT Qty	Part No.	PKT Qty	
1/2	13926	•			13927	100			
5/8	30151	•			33768	100			
3/4	1302	•	16441	100	13928	100	33898	100	
1	1298	•	16442	100	1303	•	31102	100	
1.1/4	1300	•	19152	100	1305	100			
1.1/2	1299	•	16443	100	1304	100	19688	100	
1.3/4	30152	100			33518	100			
2	1301	100	19153	100	1306	100	2858	100	
2.1/2	16882	100	19154	100	19251	100			
3	16883	100			19252	100			

• PLEASE REFER TO BOOKLET AT BACK OF THE CATALOGUE FOR PACK QUANTITY.

**RAISED COUNTERSUNK PHILLIPS SELF TAPPING SCREWS**



LENGTH

DIAMETER		4G		6G	
GRADE		304/A2		304/A2	
LENGTH		Part No.	PKT Qty	Part No.	PKT Qty
	1/2	15239	•	16233	•
	5/8	30433	•	15277	•
	3/4	34155	•	10348	•
	1	37926	•	37927	100

LENGTH

DIAMETER		8G		10G	
GRADE		304/A2		304/A2	
LENGTH		Part No.	PKT Qty	Part No.	PKT Qty
	1/2	16232	100		
	5/8	16231	100		
	3/4	16230	100	16680	100
	1	30241	100	16678	100
	1.1/4	37928	100		
	1.1/2	37929	100	37930	100

**NEW ZEALAND PRODUCT RANGE • AUSTRALIA - POA**

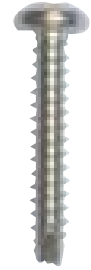
**PAN SQUARE DRIVE TYPE 17 CHIPBOARD SCREW**



METRIC

DIAMETER		8G / 4.0mm #2		10G / 5.0mm #2		
GRADE		304/A2		304/A2		
METRIC	Length	Part No.	PKT Qty	Part No.	PKT Qty	
	20mm	3/4			38226	100
	25mm	2	38225	200		

**PAN SQUARE DRIVE TYPE 25 CHIPBOARD SCREW**



METRIC

DIAMETER		6G / 3.5mm #2		8G / 4.0mm #2		
GRADE		304/A2		304/A2		
METRIC	Length	Part No.	PKT Qty	Part No.	PKT Qty	
	20mm	3/4	38227	200		
	25mm	1			38228	200

• PLEASE REFER TO BOOKLET AT BACK OF THE CATALOGUE FOR PACK QUANTITY.

**NEW ZEALAND PRODUCT RANGE • AUSTRALIA - POA**

**PAN POZI SELF TAPPING SCREWS**

DIAMETER		4G / 3.0mm		6G / 3.5mm		8G / 4.0mm		10G / 5.0mm		
GRADE		304/A2		304/A2		304/A2		304/A2		
METRIC	Length	Part No.	PKT Qty	Part No.	PKT Qty	Part No.	PKT Qty	Part No.	PKT Qty	
	6mm	1/4	1386	200	7109	200				
	10mm	3/8	1388	200	1396	200	1404	200		
	13mm	1/2	1385	200	1393	200	1401	200	1370	100
	16mm	5/8	7976	200	1397	200	1405	200	1374	100
	20mm	3/4	1387	200	1395	200	1403	200	1372	100
	25mm	1	19093	200	1390	200	1398	200	1367	100
	30mm	1.1/4			1392	200	1400	200	1369	100
	40mm	1.1/2			1391	200	1399	200	1368	100
	50mm	2			90172	200	1402	200	1371	100
63mm	2.1/2					37490	200			

**COUNTERSUNK SQUARE #1 SELF TAPPING SCREWS**

DIAMETER		4G / 3.0mm		6G / 3.5mm		
GRADE		304/A2		304/A2		
METRIC	Length	Part No.	PKT Qty	Part No.	PKT Qty	
	10mm	3/8	90071	200	90079	200
	13mm	1/2	90069	200	90076	200
	16mm	5/8	90072	200	90080	200
	20mm	3/4	90070	200	90078	200
	25mm	1			90073	200
	30mm	1.1/4			90075	200
	40mm	1.1/2			90074	200
	50mm	2			90077	200
	63mm	2.1/2				

**COUNTERSUNK SQUARE #2 SELF TAPPING SCREWS**

DIAMETER		8G / 4.0mm		10G / 5.0mm		10G / 5.0mm		
GRADE		304/A2		304/A2		316/A4		
METRIC	Length	Part No.	PKT Qty	Part No.	PKT Qty	Part No.	PKT Qty	
	13mm	1/2	90066	200				
	20mm	3/4	90068	200	90355	100		
	25mm	1	90063	200	90050	100		
	30mm	1.1/4	90065	200	90052	100	38221	100
	40mm	1.1/2	90064	200	90051	100		
	45mm	1.3/4			90053	100		
	50mm	2	90067		90054	100		
	63mm	2.1/2			90055	100		
	75mm	3			90056	100		

**NEW ZEALAND PRODUCT RANGE • AUSTRALIA - POA**

**PAN SQUARE #1 SELF TAPPING SCREWS**

**DIAMETER** 4G / 3.0mm 6G / 3.5mm

**GRADE** 304/A2 304/A2

METRIC

	Length	Part No.	PKT Qty	Part No.	PKT Qty
10mm	3/8	90197	200		
13mm	1/2	90195	200	90202	200
16mm	5/8	90198	200	90205	200
20mm	3/4	90196	200	90204	200
25mm	1			90199	200
30mm	1.1/4			90201	200
40mm	1.1/2			90200	200
50mm	2			90203	200

**PAN SQUARE #2 SELF TAPPING SCREWS**

**DIAMETER** 8G / 4.0mm 10G / 5.0mm

**GRADE** 304/A2 304/A2

METRIC

	Length	Part No.	PKT Qty	Part No.	PKT Qty
13mm	1/2	90191	200	90177	100
16mm	5/8			38220	100
20mm	3/4	90194	200	38270	100
25mm	1	90188	200	90174	200
30mm	1.1/4	90190	200	90176	200
40mm	1.1/2	90189	200	90175	200
50mm	2	90192	200	90178	200
63mm	2.1/2	38512	200	90179	100
75mm	3	90193	200	90180	100

**PAN SQUARE #3 SELF TAPPING SCREWS**

**DIAMETER** 12G

**GRADE** 304/A2

METRIC

	Length	Part No.	PKT Qty
25mm	1	90182	100
30mm	1.1/4	90184	100
40mm	1.1/2	90183	100
50mm	2	90185	100
63mm	2.1/2	90186	100
75mm	3	90187	100





**EYE DRIVE PAN HEAD MACHINE SCREWS - METRIC**



LENGTH

DIAMETER	M4		M5		M6	
GRADE	304/A2		304/A2		304/A2	
	Part No.	PKT Qty	Part No.	PKT Qty	Part No.	PKT Qty
10	30719	100				
12	30720	100	30724	100	30729	100
16	30721	100	30725	100	30730	100
20	30722	100	30726	100	30731	100
25	30723	100	30727	100	30732	100
30			30728	100	30733	100
40					30734	100
Bit No.	8		10		14	

**EYE DRIVE COUNTERSUNK HEAD MACHINE SCREWS**



LENGTH

DIAMETER	M4		M5		M6	
GRADE	304/A2		304/A2		304/A2	
	Part No.	PKT Qty	Part No.	PKT Qty	Part No.	PKT Qty
10	30704	100				
12	30705	100	30709	100	30714	100
16	30706	100	30710	100		
20	30707	100	30711	100	30715	100
25	30708	100	30712	100	30716	100
30			30713	100	30717	100
40					30718	100
Bit No.	8		10		14	

### EYE DRIVE PAN HEAD SELF TAPPING SCREWS

DIAMETER		6G		8G	
GRADE		304/A2		304/A2	
LENGTH	Part No.	PKT Qty	Part No.	PKT Qty	
	3/8	31129	100		
	1/2	30667	100	30674	100
	5/8	30670	100	30675	100
	3/4	30671	100	30676	100
	1	30672	100	30677	100
	1.1/2	30673	100	30678	100
	Bit No.	10		14	

DIAMETER		10G		14G	
GRADE		304/A2		304/A2	
LENGTH	Part No.	PKT Qty	Part No.	PKT Qty	
	1/2	30679	100	30684	100
	5/8	30680	100		
	3/4	30681	100	30685	100
	1	30682	100	30686	100
	1.1/2	30683	100	30687	100
	2	37449	100		
	Bit No.	10		14	

### EYE DRIVE COUNTERSUNK HEAD SELF TAPPING SCREWS

DIAMETER		6G		8G	
GRADE		304/A2		304/A2	
LENGTH	Part No.	PKT Qty	Part No.	PKT Qty	
	1/2	30688	100	30691	100
	5/8	30668	100	30692	100
	3/4	30669	100	30693	100
	1	30689	100	30694	100
	1.1/2	30690	100	30695	100
	Bit No.	6		8	

DIAMETER		10G		14G	
GRADE		304/A2		304/A2	
LENGTH	Part No.	PKT Qty	Part No.	PKT Qty	
	1/2	30696	100		
	5/8	30697	100		
	3/4	30698	100	30701	100
	1	30699	100	30702	100
	1.1/2	30700	100	30703	100
	Bit No.	10		14	

**POST HEXAGON SOCKET BUTTON HEAD MACHINE SCREWS - METRIC**



LENGTH

LENGTH

DIAMETER	M4		M5		M6	
GRADE	304/A2		304/A2		304/A2	
	Part No.	PKT Qty	Part No.	PKT Qty	Part No.	PKT Qty
6	31621	100				
8	31069	100				
10	9095	100	8922	100	9662	100
12	9096	100	8923	100	9663	100
16	9097	100	8924	100	8925	100
20	9098	100	9659	100	8926	100
25	9099	100	9660	100	8927	100
30	9658	100	9661	100	9664	100
35					9665	100
40					9328	100
45					9666	100
50					9667	100

DIAMETER	M8		M10	
GRADE	304/A2		304/A2	
	Part No.	PKT Qty	Part No.	PKT Qty
10	9622	100		
12	9668	100		
16	9669	100	15794	50
20	8928	100	15795	50
25	8929	100	15796	50
30	8930	100	15797	50
35	9670	100	15799	50
40	9671	100	15798	50
50	9673	100		
60	30127	50		

**POST HEXAGON SOCKET BUTTON HEAD MACHINE SCREWS - UNC**

DIAMETER	6-32 UNC		8-32 UNC		10-24 UNC	
GRADE	304/A2		304/A2		304/A2	
LENGTH	Part No.	PKT Qty	Part No.	PKT Qty	Part No.	PKT Qty
3/8			16540	100		
1/2	30615	100			30621	100
3/4	30616	100	30617	100	30622	100
1			30618	100	30623	100
1.1/2			30619	100	30624	100

DIAMETER	1/4 UNC		5/16 UNC		3/8 UNC	
GRADE	304/A2		304/A2		304/A2	
LENGTH	Part No.	PKT Qty	Part No.	PKT Qty	Part No.	PKT Qty
1/2	30625	100	30630	100	30635	50
3/4	30626	100	30631	100	30636	50
1	16636	100	30632	100	30637	50
1.1/4	30627	100			30638	50
1.1/2	30628	100	30633	100	30639	50
2	30629	100	30634	100	30640	50

**POST HEXAGON SOCKET COUNTERSUNK HEAD MACHINE SCREWS - METRIC**

DIAMETER	M4		M5	
GRADE	304/A2		304/A2	
LENGTH	Part No.	PKT Qty	Part No.	PKT Qty
8	31070	100		
10	16359	100	14762	100
12	16360	100	16364	100
16	16361	100	16365	100
20	16362	100	16366	100
25	16363	100	16367	100
30			31071	100

DIAMETER	M6		M8	
GRADE	304/A2		304/A2	
LENGTH	Part No.	PKT Qty	Part No.	PKT Qty
10	14763	100		
12	15349	100	30098	100
16	15350	100	31237	100
20	15351	100	19698	100
25	15352	100	16573	100
30	15353	100	14767	100
40	14764	100	16574	100
45	14765	100		
50	14766	100		

**POST HEXAGON SOCKET COUNTERSUNK HEAD MACHINE SCREWS - UNC**

DIAMETER	6-32 UNC	8-32 UNC	10-24 UNC
GRADE	304/A2	304/A2	304/A2

LENGTH

	Part No.	PKT Qty	Part No.	PKT Qty	Part No.	PKT Qty
1/2	30642	100	30644	100	30647	100
3/4			30645	100	30648	100
1			30646	100	30649	100
1.1/4						
1.1/2					30650	100

DIAMETER	1/4 UNC	5/16 UNC	3/8 UNC
GRADE	304/A2	304/A2	304/A2

LENGTH

	Part No.	PKT Qty	Part No.	PKT Qty	Part No.	PKT Qty
1/2	30651	100	30657	100		
3/4	30652	100	30658	100	30662	50
1	30653	100	30659	100	30663	50
1.1/4	30654	100			30664	
1.1/2	30655	100	30660	100	30665	50
2	30656	100	30661	100	30666	

**POST HEXAGON SOCKET COUNTERSUNK HEAD SELF TAPPING SCREWS**

DIAMETER	8G	10G
GRADE	304/A2	304/A2

LENGTH

	Part No.	PKT Qty	Part No.	PKT Qty
1/2			15739	100
3/4	15736	100	15740	100
1	15737	100	15741	100
1.1/2	15738	100	15742	100



**POST TORX® SOCKET BUTTON HEAD MACHINE SCREWS - METRIC**

DIAMETER		M6		M8		M10	
GRADE		304/A2		304/A2		304/A2	
LENGTH	Part No.	PKT Qty	Part No.	PKT Qty	Part No.	PKT Qty	
	16	31105	100	31110	100		
	20	31106	100	31111	100	31116	50
	25	31107	100	31112	100	31118	50
	30	31108	100	31113	100	31119	50
	35					31117	50
	40	31109	100	31114	100	31120	50
	50			31115	100	31121	50
	60					31122	50
	65					31123	50
70					31124	50	
80					31125	50	



**POST TORX® SOCKET BUTTON HEAD SELF TAPPING SCREWS**

DIAMETER		6G		8G	
GRADE		304/A2		304/A2	
LENGTH	Part No.	PKT Qty	Part No.	PKT Qty	
	1/2	30585	100	30588	100
	3/4	30586	100	30370	100
	1	30587	100	30589	100
	1.1/4			30590	100
	1.1/2	37450	100		



DIAMETER		10G		14G	
GRADE		304/A2		304/A2	
LENGTH	Part No.	PKT Qty	Part No.	PKT Qty	
	1/2	30591	100		
	3/4	30592	100	30596	100
	1	30593	100	30597	100
	1.1/4	30594	100		
	1.1/2	30595	100	30598	100

**POST TORX® SOCKET COUNTERSUNK HEAD SELF TAPPING SCREWS**

DIAMETER	6G	8G
GRADE	304/A2	304/A2

LENGTH	Part No.	PKT Qty	Part No.	PKT Qty
	1/2	30599	100	30602
3/4	30600	100	30603	100
1	30601	100	30604	100
1.1/4			30605	100

DIAMETER	10G	14G
GRADE	304/A2	304/A2

LENGTH	Part No.	PKT Qty	Part No.	PKT Qty
	3/4	30607	100	
1	30608	100	30612	100
1.1/4	30609	100		
1.1/2	30610	100	30613	100

**ONE WAY RAISED COUNTERSUNK HEAD SELF TAPPING SCREWS**

DIAMETER	8G	10G
GRADE	304/A2	304/A2

LENGTH	Part No.	PKT Qty	Part No.	PKT Qty
	1/2	13756	100	13761
3/4	13757	100	13762	100
1	13758	100	13763	100
1.1/2	13760	100	13759	100



**VANDAL PROOF BREAKAWAY NUTS - METRIC**

**GRADE** 304/A2

SIZE

	Breakaway Torque NM	Part No.	PKT Qty
M6	18-21	30367	●
M8	19-25	30368	●
M10	30-35	30369	●
M12	37-45	31066	●



**VANDAL PROOF BREAKAWAY NUTS - ALUMINIUM**

**UNC**

SIZE

	Breakaway Torque NM	Part No.	PKT Qty
10-24	25-35	30807	100
1/4	60-80	30808	100
5/16	130-160	30809	100
3/8	200-240	30810	100

**POST SOCKET KEY AND BITS**

**KEY**

**BIT**

SIZE

	Part No.	PKT Qty	Part No.	PKT Qty
3/32			30575	●
1/8	6554	●	30576	●
5/32	7610	●	30577	●
3/16	30552	●	30578	●
7/32	15288	●	30579	●
M2.5	9619	●	30580	1
M3	9620	●	30581	1
M4	9081	1	30582	1
M5	8931	1	30583	1
M6	8932	●	30584	1



● PLEASE REFER TO BOOKLET AT BACK OF THE CATALOGUE FOR PACK QUANTITY.



**POST TORX® SOCKET KEY AND BITS**

**KEY**

**BIT**

**SIZE**

	Part No.	PKT Qty	Part No.	PKT Qty
T10	30554	1	30569	1
T15	30555	1	30570	1
T20	30553	1	30571	1
T25	30556	1	30572	1
T27	30557	1	30573	1
T30	30567	1	30574	1
T40	31166	1	31168	•
T45	37940	1		
T50	31167	1	31169	1

**EYE DRIVE BITS**

**SIZE**

	Part No.	PKT Qty
NO.4	30811	•
NO.6	30812	•
NO.8	30813	•
NO.10	30814	1
NO.14	30815	1

**ONE WAY REMOVAL TOOL**

**SIZE**

To Suit	Part No.	PKT Qty
#510 8g & 10g	13775	1

• PLEASE REFER TO BOOKLET AT BACK OF THE CATALOGUE FOR PACK QUANTITY.

# STAINLESSFASTENERS PRODUCT CATALOGUE 2007

## ALLTHREAD - DIN 975

### METRIC COARSE

GRADE **304/A2** **316/A4**

DIAMETER

GRADE	304/A2	PKT Qty	316/A4	PKT Qty
	Part No.		Part No.	
M3	16126	●	5135	●
M4	6596	●	5136	●
M5	3214	●	5147	●
M6	3215	●	5148	●
M8	3216	●	5149	●
M10	3217	●	5150	●
M12	3219	●	5151	1
M14			5152	1
M16	3222	1	5153	1
M18			19310	1
M20	3223	1	5154	1
M22			9581	1
M24	3224	1	5155	1
M27			30140	1
M30			5156	1
M36			15701	1

PRICES ARE FOR 1 METER LENGTHS

● PLEASE REFER TO BOOKLET AT BACK OF THE CATALOGUE FOR PACK QUANTITY.

2007 STAINLESS FASTENERS PRODUCT CATALOGUE PLEASE REFER TO BOOKLET AT BACK OF THE CATALOGUE FOR PRICE BREAKDOWN

ABN 96 118 412 892

COPYRIGHT BY JAMES GLEN PTY LTD

THE BEST DESERVES THE BEST

**ALLTHREAD - IFI 136**

**UNC**

**GRADE**                      **304/A2**    **316/A4**

DIAMETER

	Part No.	PKT Qty	Part No.	PKT Qty
10-24 (3/16)	5067	•	5075	1
1/4	5068	•	5076	•
5/16	5069	•	5077	•
3/8	5070	•	5078	•
7/16			5079	1
1/2	14134	1	2724	1
5/8	5071	1	5080	1
3/4	5072	1	5611	1
7/8	5073	1	5082	1
1	5074	1	5083	1
1.1/8			5084	1
1.1/4			5085	1
1.1/2			5086	1

PRICES ARE FOR 36 INCH LENGTHS

**UNF**

**GRADE**                      **304/A2**

DIAMETER

	Part No.	PKT Qty
10-32	14557	•
1/4	7087	•
5/16	7088	1
3/8	7089	1
7/16	15212	1
1/2	7090	1
5/8	14838	1
3/4	14837	1

PRICES ARE FOR 36 INCH LENGTHS

**BSW**

**GRADE**                      **304/A2**    **316/A4**

DIAMETER

	Part No.	PKT Qty	Part No.	PKT Qty
1/2	1795	•	2723	1

PRICES ARE FOR 36 INCH LENGTHS

• PLEASE REFER TO BOOKLET AT BACK OF THE CATALOGUE FOR PACK QUANTITY.

**ENGINEERS STUDS - OLD STANDARD B.S.1083**



LENGTH

DIAMETER	M8		M10	
GRADE	316/A4		316/A4	
	Part No.	PKT Qty	Part No.	PKT Qty
30	16175	50		
40	16177	50	4518	50
45	30216	50		
50			4519	50

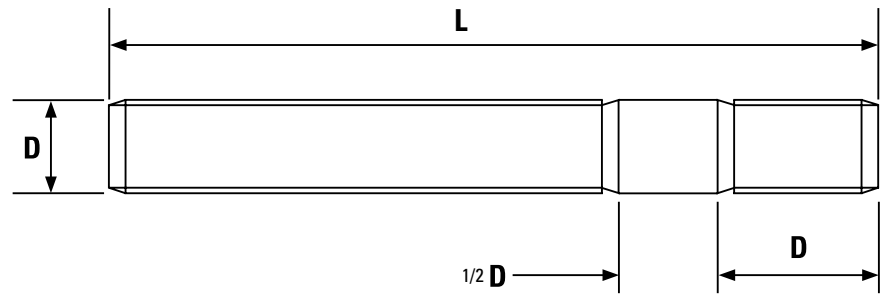
LENGTH

DIAMETER	M12		M16	
GRADE	316/A4		316/A4	
	Part No.	PKT Qty	Part No.	PKT Qty
40	4521	25		
45	30845	25		
50	4522	25	4524	25
55	30846	25	30217	25
60	4523	25	4525	25
65			5060	25
80			4526	25

LENGTH

M20		
GRADE	316/A4	
	Part No.	PKT Qty
70	30453	10

SPECIFICATION B.S.1083



**Studs - Old Standard B.S.1083**  
 This Standard provides that the length of the Metal or Stud End thread shall be equal to the Stud Diameter. One half of the diameter is left plain and the balance screwed.

**ENGINEERS STUDS - OLD STANDARD B.S.1083**

DIAMETER	5/16 BSW	3/8 BSW
GRADE	316/A4	316/A4

LENGTH

	Part No.	PKT Qty	Part No.	PKT Qty
1.1/2	16194	50	2972	50
1.3/4			2973	50
2	16195	50	2974	50
2.1/2			2976	50

DIAMETER	1/2 BSW	5/8 BSW
GRADE	316/A4	316/A4

LENGTH

	Part No.	PKT Qty	Part No.	PKT Qty
1.3/4	2980	25		
2	2981	25	2985	25
2.1/4				
2.1/2			2987	25
3			2988	25

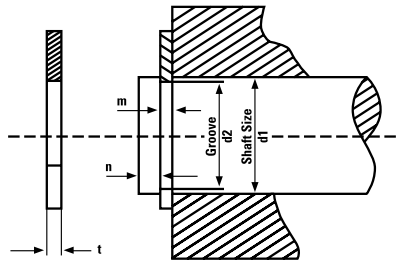


**E' TYPE CIRCLIPS**

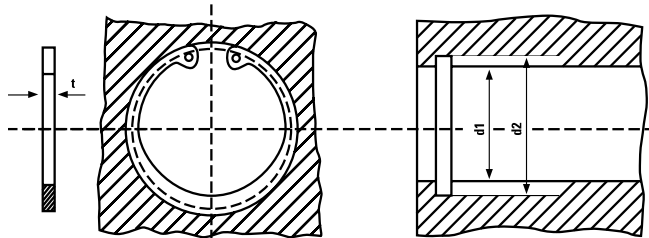
SHAFT SIZE

GRADE	304/A2				304/A2			
	Groove	Thickness	Part No.	PKT Qty	Groove	Thickness	Part No.	PKT Qty
1~1.4	0.8	0.2	16457	●				
1.4~2	1.2	0.3	16458	●				
2~2.5	1.5	0.4	16459	●				
2.5~3.2	2.0	0.4	15943	●				
3~4					2.3	0.4	5011	●
3.2~4	2.5	0.4	16460	●				
4~5	3.0	0.6	5008	●				
4.5~6					3.0	0.5	5260	●
5~7	4.0	0.6	5009	●				
5~7					3.6	0.5	5021	●
6~8	5.0	0.6	5101	●	4.0	0.6	5014	●
7~9	6.0	0.8	6370	●				
7~9					6.0	0.6	5016	100
8~11	7.0	0.8	6371	100	7.0	0.9	5017	100
9~12	8.0	0.8	6372	50	8.0	1.0	5018	50
10~14	9.0	0.8	6373	50	9.0	1.0	5022	50
11~15	10.0	1.0	6374	50				
13~18	12.0	1.0	15944	25	12.0	1.0	5019	25
16~24	15.0	1.5	15942	25				

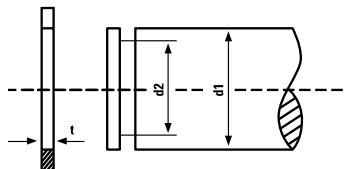
**E' TYPE CIRCLIPS**



**INTERNAL CIRCLIPS**



**EXTERNAL CIRCLIPS**



● PLEASE REFER TO BOOKLET AT BACK OF THE CATALOGUE FOR PACK QUANTITY.

**INTERNAL AND EXTERNAL CIRCLIPS**

SHAFT SIZE

		INTERNAL				EXTERNAL			
GRADE		304/A2				304/A2			
	Groove	Thickness	Part No.	PKT Qty	Groove	Thickness	Part No.	PKT Qty	
10	10.4	1.0	4990	50	9.6	1.0	4965	50	
							6549	50	
12	12.5	1.0	4991	50	11.5	1.0	4968	50	
13	13.6	1.0	4992	50	12.4	1.0	4969	50	
14	14.6	1.0			13.4	1.0	4970	50	
15	15.7	1.0	15949	50	14.3	1.0	15964	50	
16	16.8	1.0	4994	50	15.2	1.0	4971	50	
17	17.8	1.0			16.2	1.0	4972	50	
18	19.0	1.0	6622	50	17.0	1.2	6345	50	
19	20.0	1.0	4995	50	18.0	1.2	4973	50	
20	21.0	1.0	4996	50	19.0	1.2	4974	50	
21	22.0	1.0	4997	25	20.0	1.2			
22	23.0	1.0	4998	25	21.0	1.2	4975	25	
24	25.2	1.2			22.9	1.2	4976	25	
25	26.2	1.2	5000	25	23.9	1.2	4977	25	
26	27.2	1.2	7424	25	24.9	1.2			
28	29.4	1.2	5001	25	26.9	1.6	4978	25	
30	31.4	1.2	5002	10	28.6	1.6	4979	10	
32	33.7	1.2	5003	10	30.3	1.6	4980	10	
34	35.7	1.6	5004	10	32.3	1.6			
35	37.0	1.6	15951	10	33.0	1.6	4981	10	
36	38.0	1.6			34.0	1.8	4982	10	
37	39.0	1.6	5657	10					
38	40.0	1.6	5005	10					
40	42.5	1.8	5006	10	38.0	1.8	4984	10	
42	44.5	1.8	5007	5	39.5	1.8	4985	5	
45	47.5	1.8			42.5	1.8	4986	5	
47	49.5	1.8	14111	5					
50	53.0	2.0			47.0	2.0	4988	5	
52	55.0	2.0	6547	5	49.0	2.0	4989	5	
62	65.0	2.0	15956	5	59.0	2.0			
125	129.0	4.0			121.0	4.0	5816	1	



**SPLIT PINS - DIN 94**



LENGTH

LENGTH

LENGTH

DIAMETER	M0.8		M1		M1.2	
GRADE	304/A2		304/A2		304/A2	
	Part No.	PKT Qty	Part No.	PKT Qty	Part No.	PKT Qty
10	19571	●	9379	●		
12	19572	●	19538	●		
14						
16	19573	●	6478	●	19786	200
20	19574	200	19539	200		
25					19788	200
32	19576	200	9383	200		

DIAMETER	M1.6		M1.6		M2	
GRADE	304/A2		316/A4		304/A2	
	Part No.	PKT Qty	Part No.	PKT Qty	Part No.	PKT Qty
10	5158	●			9384	●
12	19540	●	19516	200	9385	●
14	19373	●				
16	33696	●			9386	●
20	5640	●	19517	200	19541	●
25	5161	●			9388	●
32	5162	●			9389	200
40	5641	●			19542	200

DIAMETER	M2.5		M2.5		M3.2		M3.2	
GRADE	304/A2		316/A4		304/A2		316/A4	
	Part No.	PKT Qty	Part No.	PKT Qty	Part No.	PKT Qty	Part No.	PKT Qty
10					5170	200		
12	19543	200	19518	200	33537	200		
16	30155	200			33538	200		
20	5642	200	19519	200	5644	200	19522	200
25	5166	200	19520	200	5172	200	19523	200
32	5167	200			5173	200	19524	200
36	19376	200			19374	200		
40	5643	200	19521	200	5645	200	19525	200
45					5175	200		
50	5169	200			5176	200	19526	200
63					5177	200		
80					30926	200		

● PLEASE REFER TO BOOKLET AT BACK OF THE CATALOGUE FOR PACK QUANTITY.



**SPLIT PINS - DIN 94**

LENGTH	DIAMETER M4		M4		M5		M5	
	GRADE 304/A2		316/A4		304/A2		316/A4	
	Part No.	PKT Qty	Part No.	PKT Qty	Part No.	PKT Qty	Part No.	PKT Qty
20	5647	100			5649	100		
25	5179	100	19527	100	5185	100	19531	100
32	5180	100	19528	100	5186	100	19532	100
36	19375	100			31203	100		
40	5648	100	19529	100	5650	100	19533	100
45	5182	100			5651	100		
50	5183	100	19530	100	5188	100	19534	100
63	19582	100			5189	100	19535	100
71					19544	100		
80					4352	100		
90					4353	100		
100					19790	100		



LENGTH	M6.3			
	GRADE 304/A2		316/A4	
	Part No.	PKT Qty	Part No.	PKT Qty
25	5191	100		
32	5192	100	31206	100
36				
40	5653	100	19580	100
45	5194	100		
50	5195	100	19581	100
63	5196	100	19537	100
80	19546	100	31207	100
100	9434	100		

LENGTH	M8		M10	
	GRADE 304/A2		304/A2	
	Part No.	PKT Qty	Part No.	PKT Qty
50	4355	50	4357	50
63	19792	50	19549	50
80	7597	50	16688	50
90	16576	50	19794	50
100	4356	50	4359	50

**GLENLOCH SKEW PROOF ROLLED WAVE SPRING PINS**



LENGTH

LENGTH

LENGTH

LENGTH

DIAMETER	M1.5	M2
----------	------	----

GRADE	420	420
-------	-----	-----

	Part No.	PKT Qty	Part No.	PKT Qty
6	3240	200	3687	200
8			19381	200
10	3242	200	3689	200
12	3246	200	3691	200
16	3248	200	3692	200
20			3694	200

DIAMETER	M2.5	M3
----------	------	----

GRADE	420	420
-------	-----	-----

	Part No.	PKT Qty	Part No.	PKT Qty
10	3696	•	3704	200
12	3697	200	3706	200
16	3699	200	3707	200
20	3701	200	3709	200
22	3702	200	3711	200
25	3703	200	3712	200

DIAMETER	M3.5	M4
----------	------	----

GRADE	420	420
-------	-----	-----

	Part No.	PKT Qty	Part No.	PKT Qty
10	3713	200		
12	3714	200		
16	3715	200	3719	100
20	3716	200	3720	100
22	3717	200		
25	3718	200	3721	100
30			14913	100

DIAMETER	M5	M6
----------	----	----

GRADE	420	420
-------	-----	-----

	Part No.	PKT Qty	Part No.	PKT Qty
12			33930	100
16	3723	100	4427	100
20	3724	100	3729	100
25	3725	100	3730	100
30	14914	100	14915	100
40	3728	100	3733	100
50	16587	100	3734	100

• PLEASE REFER TO BOOKLET AT BACK OF THE CATALOGUE FOR PACK QUANTITY.

**GLENLOCH SKEW PROOF ROLLED WAVE SPRING PINS**

DIAMETER	M8		M10	
GRADE	420		420	
LENGTH	Part No.	PKT Qty	Part No.	PKT Qty
20	9645	50		
25	16285	50		
30	5063	50		
40	16588	50	9277	50
50	31229	50		
60	30146	50		
70	8872	50		



**WING SCREWS**

DIAMETER	M5		M6		M8	
GRADE	304/A2		304/A2		304/A2	
LENGTH	Part No.	PKT Qty	Part No.	PKT Qty	Part No.	PKT Qty
12			31077	100		
16	31076	100	31078	100		
20	19413	100	19415	100	31079	50
25	19414	100	19416	100	19417	50
30			30366	100	19418	50



**THUMB SCREWS**

DIAMETER	1/4 UNC	
GRADE	304/A2	
LENGTH	Part No.	PKT Qty
1/2	30096	100
3/4	14540	100



**ROLLED SPRING PINS**



LENGTH

LENGTH

LENGTH

DIAMETER		1/16		3/32		1/8	
GRADE		420		420		420	
	Part No.	PKT Qty	Part No.	PKT Qty	Part No.	PKT Qty	
3/16	3462	•					
1/4	3463	•	7031	•	3482	•	
5/16	7158	•	4649	•			
3/8	3464	200	3471	200	3483	200	
1/2	3466	•	3477	200	3484	200	
5/8	3467	200	3478	•	3485	200	
3/4	3468	•	3479	•	3486	200	
7/8			3480	200	3487	200	
1	3470	200	3481	200	3488	200	
1.1/2					3490	200	
2					3491	200	

DIAMETER		5/32		3/16		1/4	
GRADE		420		420		420	
	Part No.	PKT Qty	Part No.	PKT Qty	Part No.	PKT Qty	
3/8	14561	•					
7/16	4070	•					
1/2			16401	100			
5/8	3492	•	3497	100	19397	100	
3/4	3493	•	3498	100	3504	100	
7/8	3494	100					
1	3495	100	3499	100	3505	100	
1.1/4	3496	100	3500	100	3506	100	
1.1/2	16584	100	3501	100	3507	100	
1.3/4					3508	100	
2			3502	100	3509	100	
2.1/2			3503	100	3510	100	

DIAMETER		5/16		3/8		1/2	
GRADE		420		420		420	
	Part No.	PKT Qty	Part No.	PKT Qty	Part No.	PKT Qty	
3/4	15883	50					
1	13764	50					
1.1/4	13765	50					
1.1/2	13766	50	4651	50			
1.3/4			9545	50			
2	13767	50					
2.1/4					9546	25	
2.1/2					9544	25	
3	3511	50	3512	50			
3.1/2					9547	25	

• PLEASE REFER TO BOOKLET AT BACK OF THE CATALOGUE FOR PACK QUANTITY.

### FLAT HEAD ANNULAR RING DIAMOND POINT NAILS

DIAMETER	M2	M2.8	M3.15
NEAREST BGW	14	12	10
GRADE	304/A2	304/A2	304/A2

LENGTH

	Part No.	PKT Qty	Part No.	PKT Qty	Part No.	PKT Qty
25	31012	1kg	5320	1kg		
30			10681	1kg		
40			5095	1kg		
50					5093	1kg

DIAMETER	M3.75	M4
NEAREST BGW	9	8
GRADE	304/A2	304/A2

LENGTH

	Part No.	PKT Qty	Part No.	PKT Qty
40	5090	1kg		
65	5091	1kg		
75	5092	1kg		
90			5337	1kg

### HEXAGON SOCKET PRESSURE PLUG

BSPT	
GRADE	316/A4

LENGTH

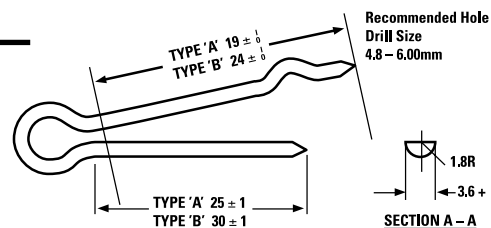
	Part No.	PKT Qty
1/8	14754	1
1/4	14755	1
3/8	14756	1
1/2	14757	1

### HUMP BACK SPLIT PINS

GRADE	316/A4
-------	--------

LENGTH

	Part No.	PKT Qty
HP/A	3374	200
HP/B	3375	200



HUMPBACK SPLIT PINS: REF. HP 'A' (For 16 to 20mm dia. pins or bolts)  
REF. HP 'B' (For 22 to 24mm dia. pins or bolts)

● PLEASE REFER TO BOOKLET AT BACK OF THE CATALOGUE FOR PACK QUANTITY.

# STAINLESSFASTENERS PRODUCT CATALOGUE 2007

## U DRIVE SCREWS - ANSI B18.6.4

DIAMETER	00G	0G
----------	-----	----

GRADE	304/A2	304/A2
-------	--------	--------

LENGTH

	Part No.	PKT Qty	Part No.	PKT Qty
1/8	1766	200	1771	200
3/16	1767	200	1772	200
1/4	1769	200	1773	200
3/8			1775	200



2G

GRADE	304/A2
-------	--------

LENGTH

	Part No.	PKT Qty
1/8	1776	200
3/16	1777	200
1/4	1778	200
5/16	1779	200

DIAMETER	4G	6G
----------	----	----

GRADE	304/A2	304/A2
-------	--------	--------

LENGTH

	Part No.	PKT Qty	Part No.	PKT Qty
3/16	1780	200		
1/4	1781	200	1784	200
5/16	1782	200	1785	200
3/8	1783	200	1786	200
1/2			16578	200

DIAMETER	8G	10G
----------	----	-----

GRADE	304/A2	304/A2
-------	--------	--------

LENGTH

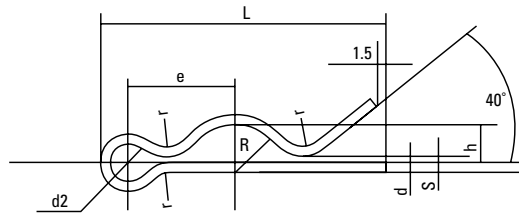
	Part No.	PKT Qty	Part No.	PKT Qty
3/8	33983	200	1788	200
1/2	1787	200	31068	200

## SNAP PINS

GRADE **304/A2**

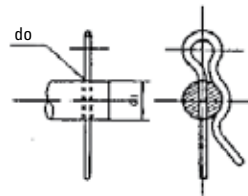
SHAFT SIZE

	Mfr. P/N	Part No.	PKT Qty	
	6	31060	30057	100
	8	31080	16427	100
	10	31100	16429	100
	12	31120	16430	100
	16	31160	16432	100



DIMENSIONS IN MM

$r = 1.5d$



PART NUMBER		d	d2	e	R	h	S	L	d1	do	
31040	4	1	±0.02	3	6	2	1	0.5	16.3	4	1.2
31050	5			6.5	2.5	1.5	17.9		5		
31060	6	1.2	±0.02	3.6	7.8	3	1.8	0.6	21.2	6	1.5
31070	(7)				8.3	3.5	2.3		22.8	7	
31080	8	1.6	±0.02	4.8	10.4	4	2.4	0.8	27.7	8	1.9
31090	(9)				10.9	4.5	2.9		29.3	9	
31100	10	1.8	±0.02	5.4	12.2	5	3.2	0.9	32.6	10	2.2
31120	12				13.2	6	4.2		35.8	12	
31140	14	2	±0.02	6	15	7	5	1	40.6	14	2.4
31160	16				16	8	6		43.8	16	

## PUSH NUT

GRADE **304/A2**

SHAFT SIZE

	Mfr. P/N	Part No.	PKT Qty	
	6	33060	16425	100
	8	33080	30059	100
	10	33100	16648	100