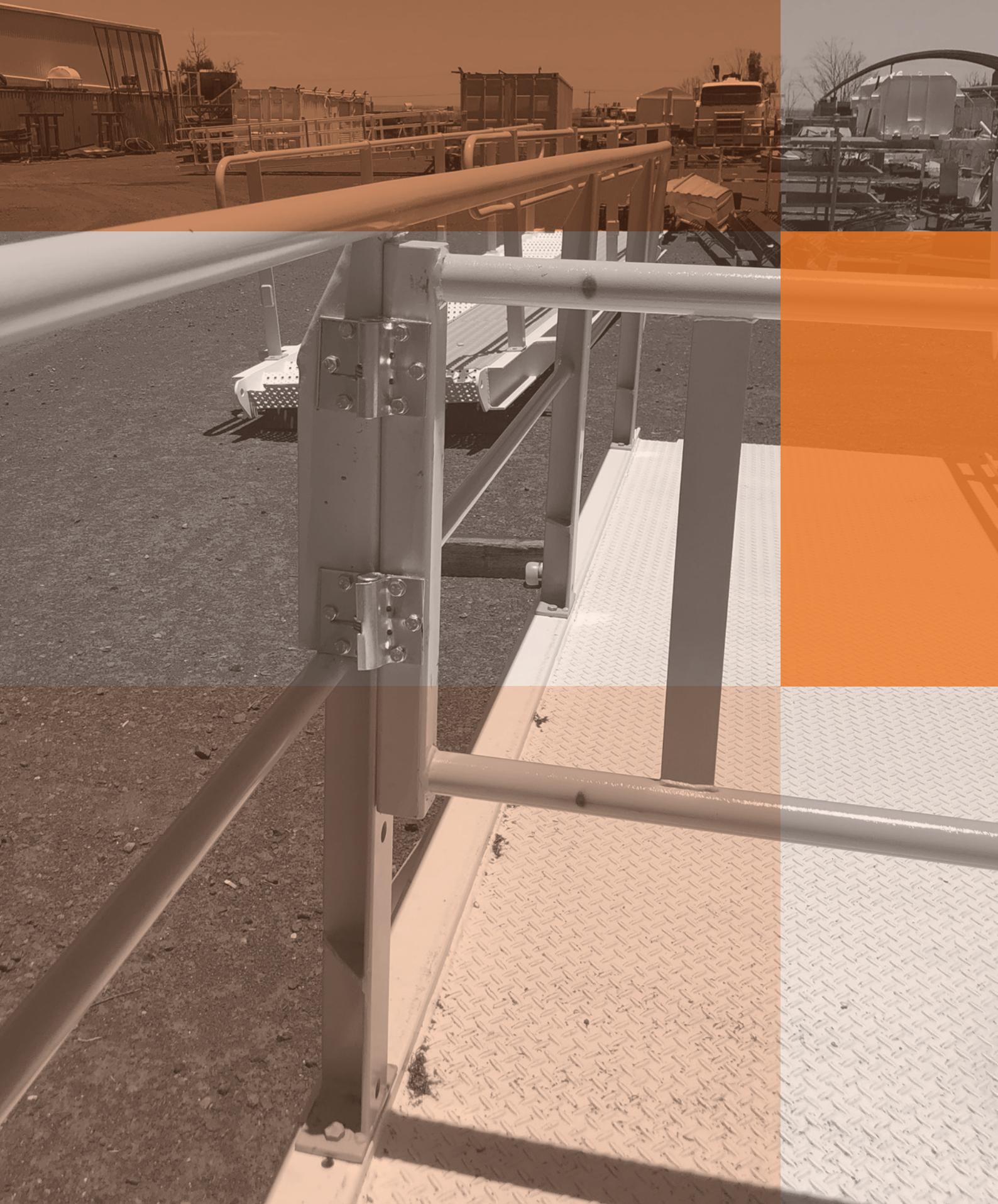




Hinges





Weld-on Hinges Steel with Grease Nipple WOHMS.00

MATERIAL

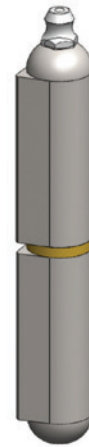
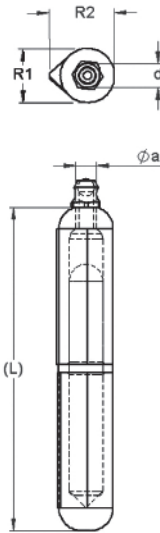
Steel

FINISH

Raw

FEATURES

Brass Washer
Steel Pin
Grease Nipple



Part No.	L (mm)	L (inch)	R1	R2	d	ø a	Weight
WOHMS-080GN	80	3-3/16	13	15.5	8	6	8.5
WOHMS-100GN	100	4	16	20	10	8	16.4
WOHMS-120GN	120	4-3/4	16	20	11	8	19.3
WOHMS-135GN	135	5-1/4	18	22	12	8	28.2
WOHMS-150GN	150	6	20	25	13	8	38.3
WOHMS-180GN	180	7	20	25	14	10	46.0
WOHMS-200GN	200	8	23	28.5	16	10	69.5

Weld-on Hinges Steel WOHMS-040→200

MATERIAL

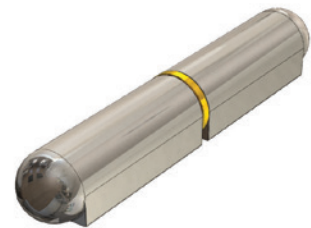
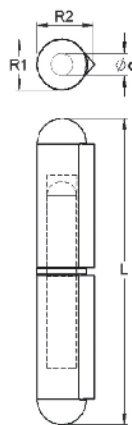
Steel

FINISH

Raw

FEATURES

Brass Washer
Steel Pin



Part No.	L (mm)	L (inch)	R1	R2	d	Weight
WOHMS-040	40	1-9/16	8	9.5	5	1.6
WOHMS-060	60	2-3/8	10	12	6	3.7
WOHMS-080	80	3-3/16	13	15.5	8	8.4
WOHMS-100	100	4	16	20	10	16.7
WOHMS-120	120	4-3/4	16	20	11	20.3
WOHMS-135	135	5-1/4	18	22	12	28.0
WOHMS-150	150	6	20	25	13	39.7
WOHMS-180	180	7	20	25	14	48.0
WOHMS-200	200	8	23	28.5	16	68.5

Weld-on Hinges Steel with Grease Nipple & Brass Pin

WOHMS-080GN-1
WOHMS-100GN-1
WOHMS-120GN-1

MATERIAL

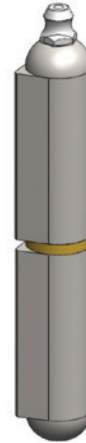
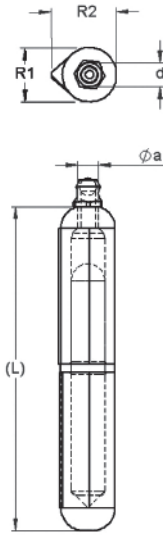
Steel

FINISH

Raw

FEATURES

Brass Washer
Brass Pin
Grease Nipple



Part No.	L (mm)	L (inch)	R1	R2	d	ø a	Weight
WOHMS-080GN-1	80	3-3/16	13	15.5	8	6	8.5
WOHMS-100GN-1	100	4	16	20	10	8	16.4
WOHMS-120GN-1	120	4-3/4	16	20	10	8	19.4

Weld-on Hinges Steel with Brass Pin

WOHMS-040-1 →
WOHMS-200-1

MATERIAL

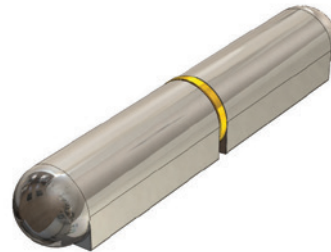
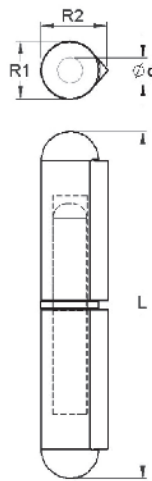
Steel

FINISH

Raw

FEATURES

Brass Washer
Brass Pin



Part No.	L (mm)	L (inch)	R1	R2	d	Weight
WOHMS-040-1	40	1-9/16	8	9.5	5	1.6
WOHMS-060-1	60	2-3/8	10	12	6	3.7
WOHMS-070-1	70	2-3/4	11.5	13.5	7	5.7
WOHMS-080-1	80	3-3/16	13	15.5	8	8.5
WOHMS-100-1	100	4	16	20	10	17.0
WOHMS-120-1	120	4-3/4	16	20	11	20.5
WOHMS-150-1	150	6	20	25	13	40.2
WOHMS-180-1	180	7	20	25	14	48.5
WOHMS-200-1	200	8	23	28.5	16	69.8

Weld-on Hinges Aluminium with Grease Nipple WOHAL-080GN → WOHAL-150GN

MATERIAL

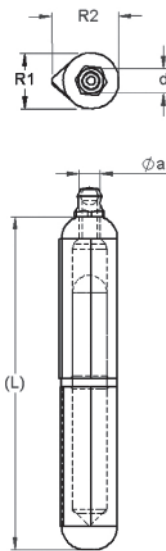
Aluminium

FINISH

Raw

FEATURES

Stainless Steel Washer
Stainless Steel Pin
Grease Nipple



Part No.	L (mm)	L (inch)	R1	R2	d	ø a	Weight
WOHAL-080GN	80	3-3/16	13	15.5	8	6	4.1
WOHAL-100GN	100	4	16	20	10	8	7.8
WOHAL-120GN	120	4-3 3/4	16	20	11	8	9.3
WOHAL-150GN	150	6	20	25	13	8	18.7

Weld-on Hinges Aluminium WOHAL-060 → WOHAL-180

MATERIAL

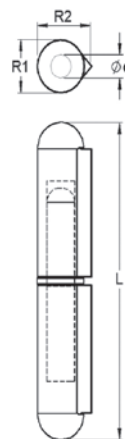
Aluminium

FINISH

Raw

FEATURES

Stainless Steel Washer
Stainless Steel Pin



Part No.	L (mm)	L (inch)	R1	R2	d	Weight
WOHAL-060	60	2-3/8	10	12	6	1.8
WOHAL-080	80	3-3/16	13	15.5	8	4.0
WOHAL-100	100	4	16	20	10	7.7
WOHAL-120	120	4-3/4	16	20	11	9.2
WOHAL-150	150	6	20	25	13	18.5
WOHAL-180	180	7	20	25	14	24.5

Weld-on Hinges Stainless Steel

WOHSS-060 →

WOHSS-180

MATERIAL

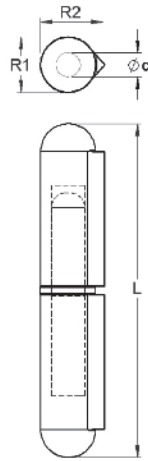
Stainless Steel

FINISH

Raw

FEATURES

Stainless Steel Washer
Stainless Steel Pin



Part No.	L (mm)	L (inch)	R1	R2	d	Weight
WOHSS-060	60	2-3/8	10	12	6	4.1
WOHSS-080	80	3-3/16	13	15.5	8	8.8
WOHSS-100	100	4	16	20	10	17.6
WOHSS-120	120	4-3/4	16	20	10	20.1
WOHSS-150	150	6	20	25	13	41.0
WOHSS-180	180	7	20	25	14	49.3

UES

international

Engineering Solutions
Since 1904

High quality gas struts and drawer slides for your
camper trailer, caravan or 4x4 vehicle.

Visit your nearest UES showroom or find us at :

(AUS) 1300 00 1904 www.uesint.com

Locks

Hinges

Latches

Rubber & Seals

Gas Struts

Drawer Slides

Water Tanks

Flap Hinge

BFHZP76X76, BFHZP102X102

MATERIAL

Steel

FINISH

ZP

FEATURES

Brass Pin

DIMENSION (A)

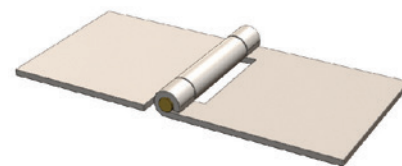
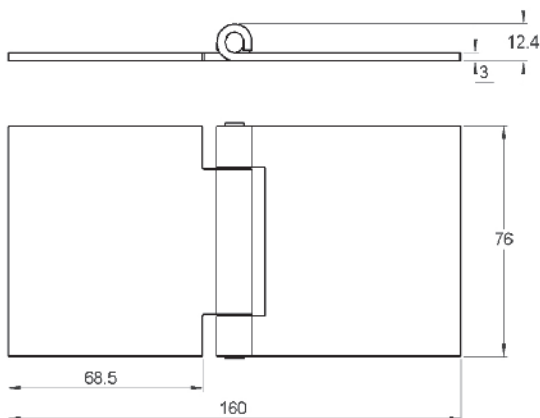
BFHZP76X76 - 76.5mm

BFHZP102X102 - 101.5mm

DIMENSION (B)

BFHZP76X76 - 76mm

BFHZP102X102 - 102mm



UES
international
Engineering Solutions
Since 1904

The best quality hardware and accessories for your camper trailer, caravan or 4x4 vehicle.

Visit your nearest **UES** showroom or buy online at www.uesint.com

Locks
Hinges
Latches
Rubber & Seals
Gas Struts
Drawer Slides
Water Tanks

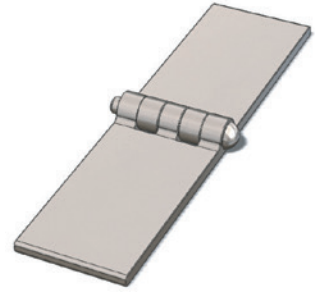
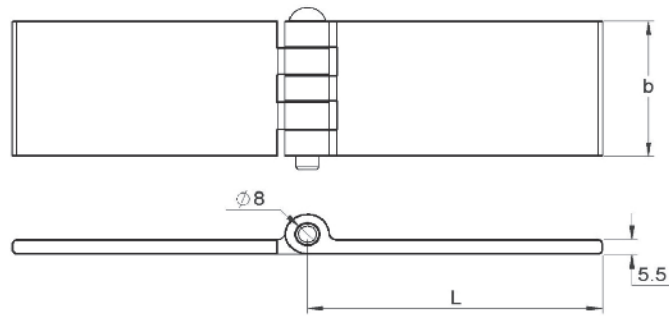


Sydney, Melbourne, Brisbane, Darwin, Perth, Adelaide, Nowra, Auckland

Back Flap Steel Hinges

BFHMS40X90
BFHMS50X80
BFHMS50X100
BFHMS60X100

MATERIAL
 Bright Steel



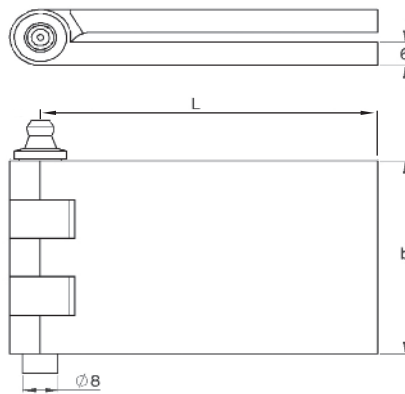
Part No.	Width (B)	Length (L)	Flap thickness	Pin \varnothing (mm)
BFHMS40X90	40	90	5	6
BFHMS50X80	50	80	6	8
BFHMS50X100	50	100	6	8
BFHMS60X100	60	100	6	8

Back Flap Steel Hinges

BFHMS50X80GN
BFHMS60X80GN
BFHMS60X100GN

MATERIAL
 Bright Steel

FEATURES
 Grease Nipple



Part No.	Interlinkage	Width (b)	Length (L)	Flap thickness	PIN \varnothing (mm)	Grams each
BFHMS50X80GN	5-part	50	80	6	8	430
BFHMS60X80GN	5-part	60	80	6	8	530
BFHMS60X100GN	5-part	60	100	6	8	600



Tough Polypropylene Toolboxes
 Ph(AUS): **1300 00 1904**
www.uesint.com

Heavy Duty Rear Door Hinge TDH0505ZP, TDH0506ZP, UES0508ZP

MATERIAL

Steel

FINISH

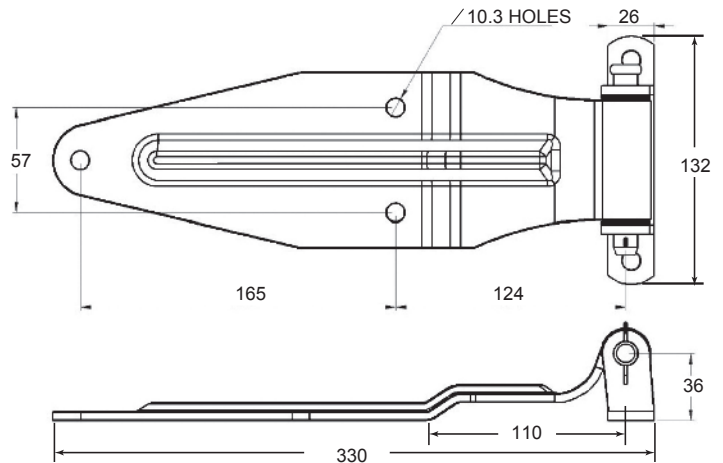
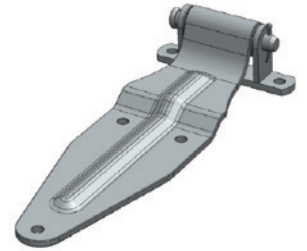
ZP

FEATURES

TDH0505ZP - Heavy duty rear door hinge, bolt-on offset butt.

TDH0506ZP - Heavy duty rear door hinge, weld-on butt.

TDH0508ZP - Heavy duty rear door hinge, weld-on offset butt.



Heavy Duty Rear Door Hinge TDH0505SS

MATERIAL

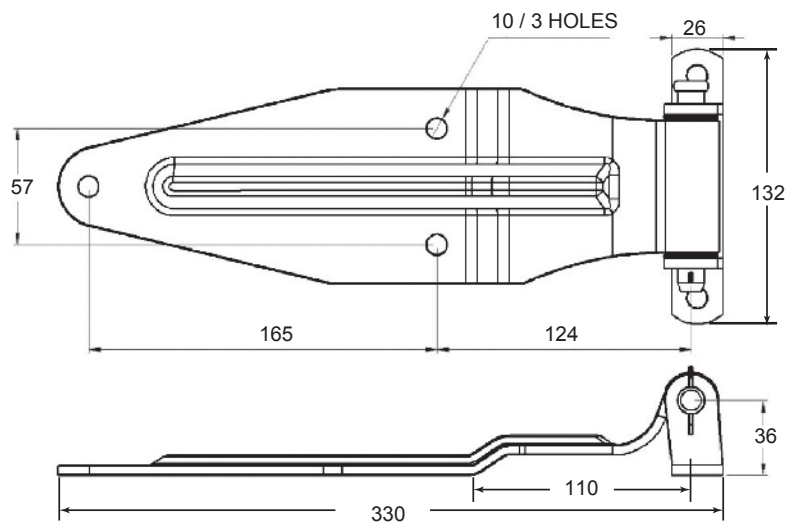
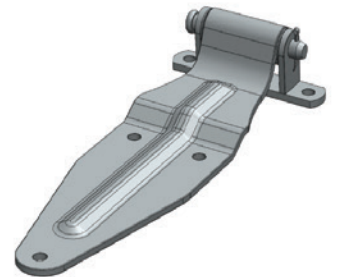
Stainless Steel

FINISH

Satin

FEATURES

Heavy duty rear door hinge, bolt-on offset butt.



Side Door Hinge TDH0188SS

MATERIAL

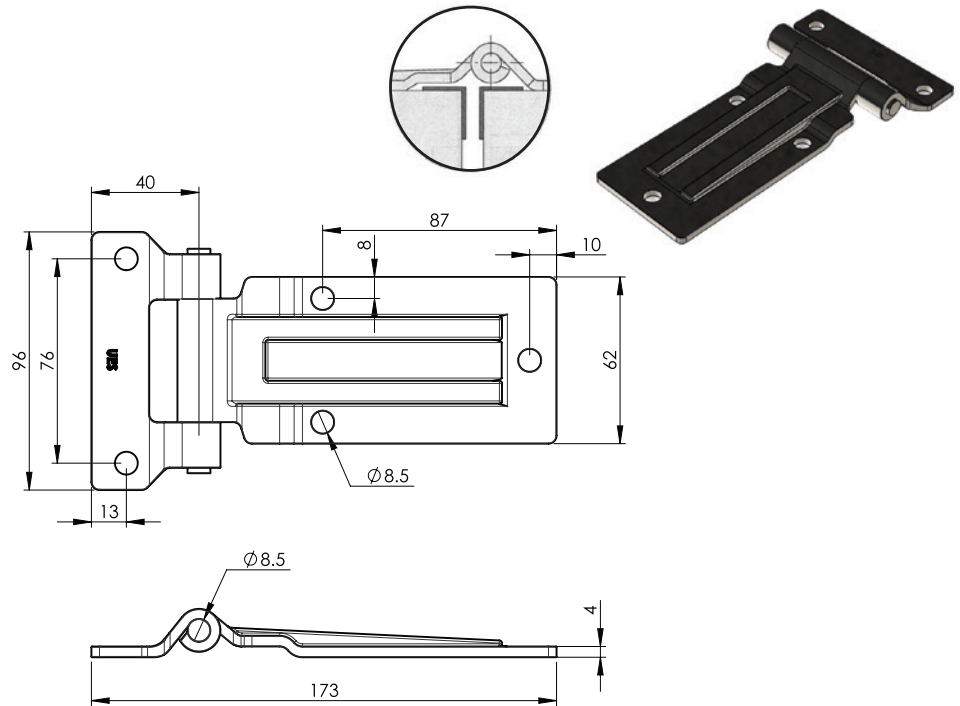
Stainless Steel

FINISH

Polished

FEATURES

Stainless steel side door hinge for standard side doors and small over the seal applications. Designed for refrigerated bodies etc.



Side Door Hinge TDH0619SS, TDH0619ZP

MATERIAL

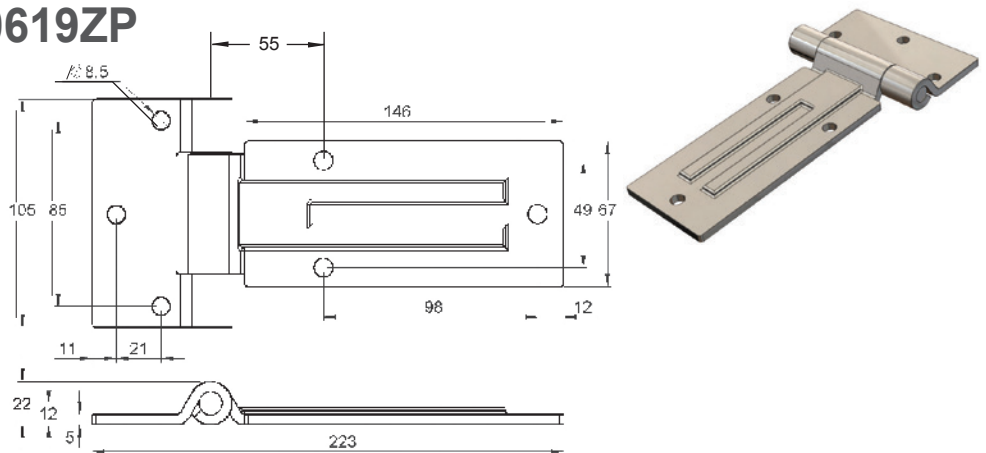
TDH0619SS - Stainless Steel
TDH0619ZP - Steel

FINISH

TDH0619SS - Polished
TDH0619ZP - ZP

FEATURES

TDH0619ZP - Stainless Steel Pin



Small Door Flat Hinges TDH0331SS, TDH0331ZP

MATERIAL

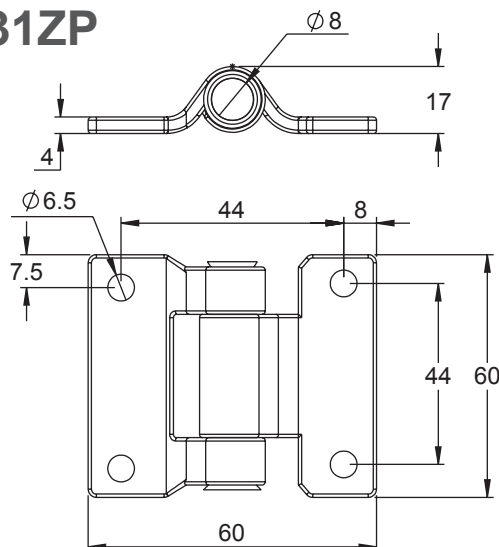
TDH0331SS - Stainless Steel
TDH0331ZP - Steel

FINISH

TDH0331SS - Polished
TDH0331ZP - Zinc Plated

FEATURES

For light duty applications, but very robust. For use on: electronic/ electric enclosures, industrial and commercial cabinets, motor generators, portable compressors, storage cabinets, etc. Mechanically polished.



Heavy Duty Side Hinge TDH0614ZP

MATERIAL

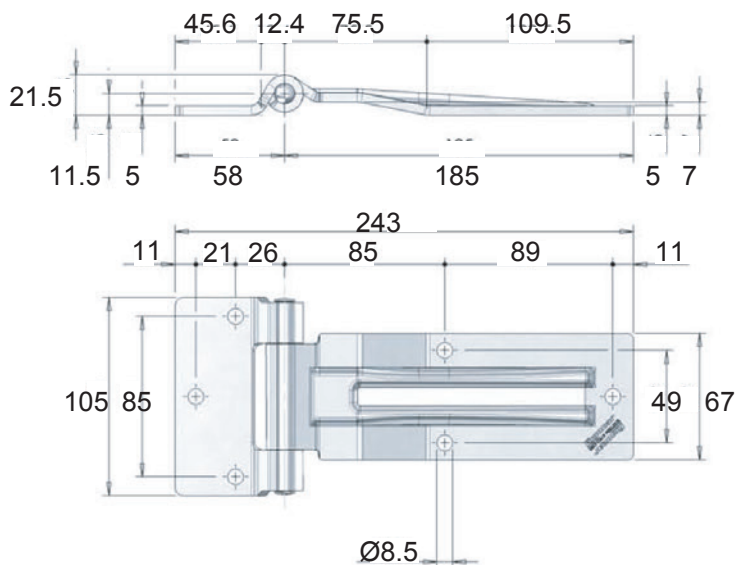
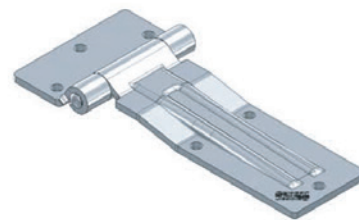
Steel

FINISH

Zinc Plated

FEATURES

Heavy duty side hinge for large doors.
Designed for over-seal application up to thickness 7 mm..



Side Door Hinge TDH0510ZP

MATERIAL

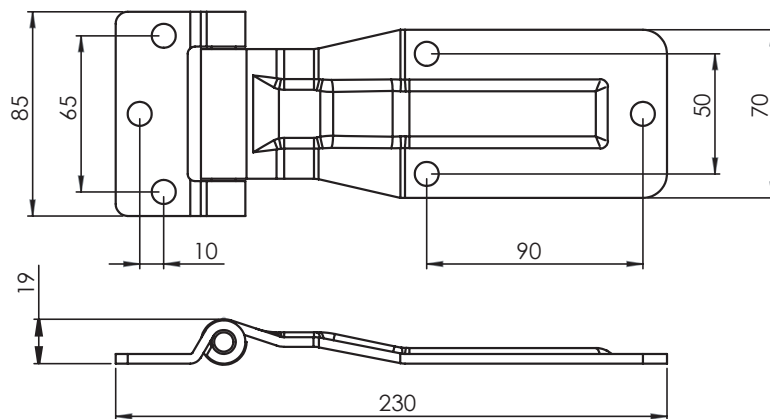
Steel

FINISH

Zinc Plated

FEATURES

Low profile hinge ideal for side door application



Rear Door Hinge - Offset TDH0631SS, TDH0631ZP



MATERIAL

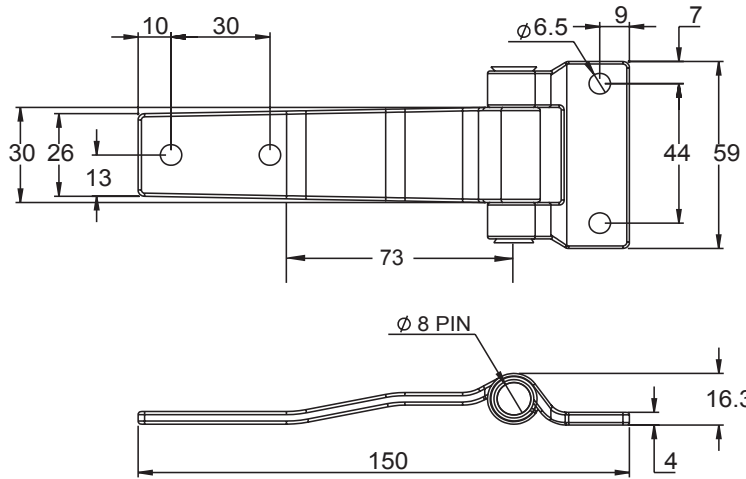
TDH0631SS - Stainless Steel
TDH0631ZP - Steel

FINISH

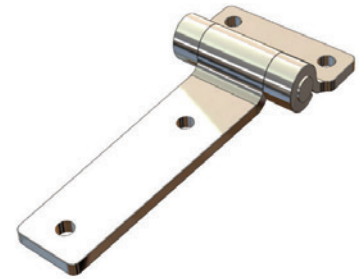
TDH0631SS - Polished
TDH0631ZP - Zinc Plated

WEIGHT

200g



Rear Door Hinge - Flat TDH0633SS, TDH0633ZP



MATERIAL

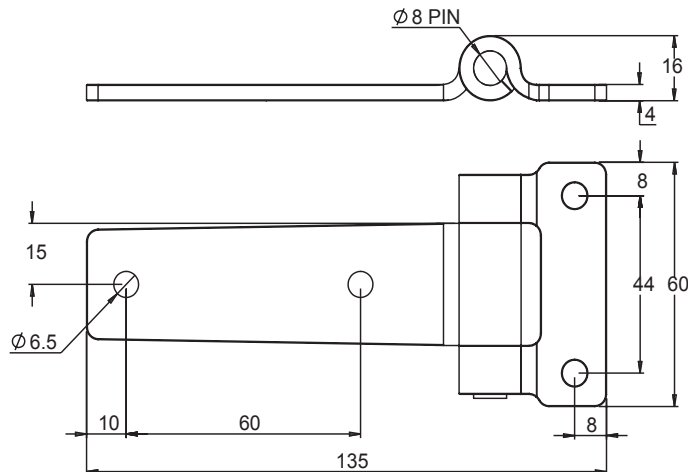
TDH0633SS - Stainless Steel
TDH0633ZP - Steel

FINISH

TDH0633SS - Polished
TDH0633ZP - Zinc Plated

WEIGHT

195g



Rear Door Hinge TDH0069ZP

MATERIAL

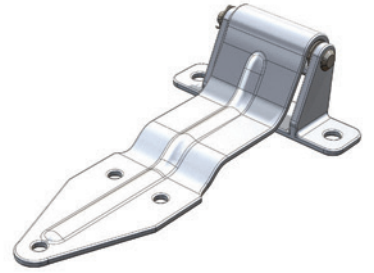
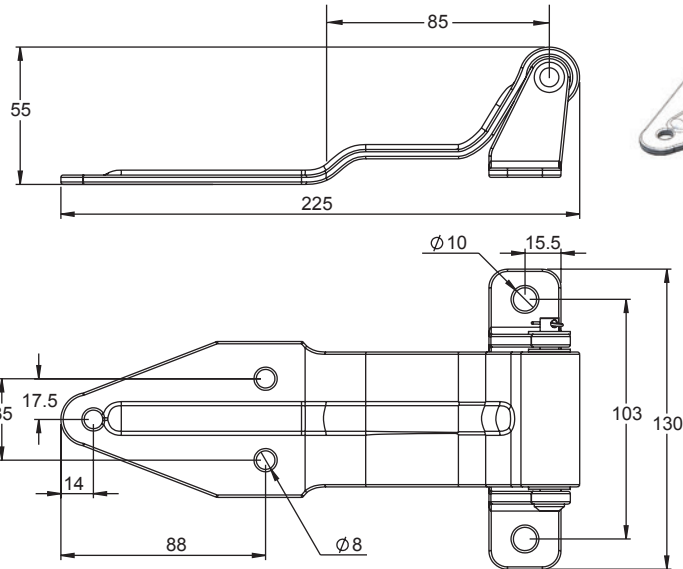
Steel

FINISH

ZP

WEIGHT

850g



Rear Door Hinge TDH0406ZP

MATERIAL

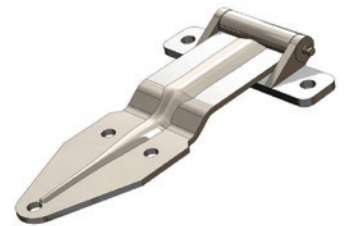
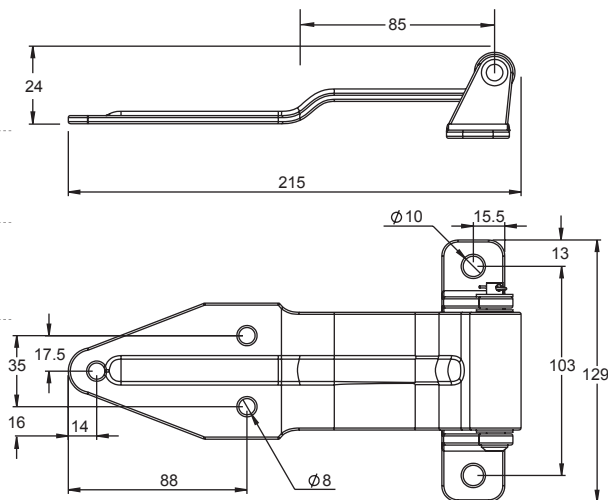
Steel

FINISH

ZP

FEATURES

Side Door Hinge



Rear Door Hinge TDH0502ZP

MATERIAL

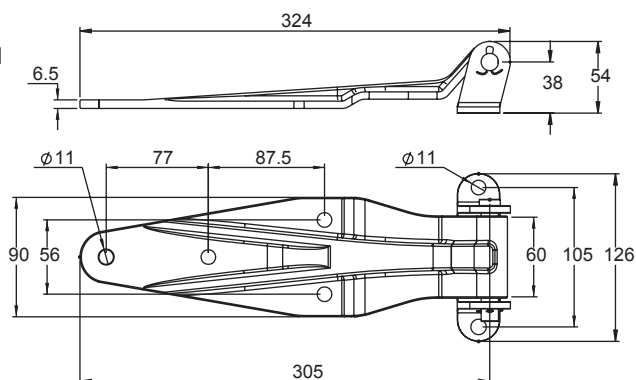
TDH0502ZP - High Quality Forged Steel
TDH0502ZP-4 - Stainless Steel

FINISH

TDH0502ZP - Zinc Plated
TDH0502ZP-4 - Satin

FEATURES

Rear door hinge



Multi Purpose Offset Hinge

TDH3196ZP

MATERIAL

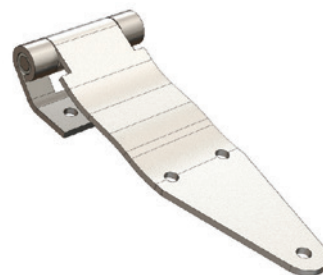
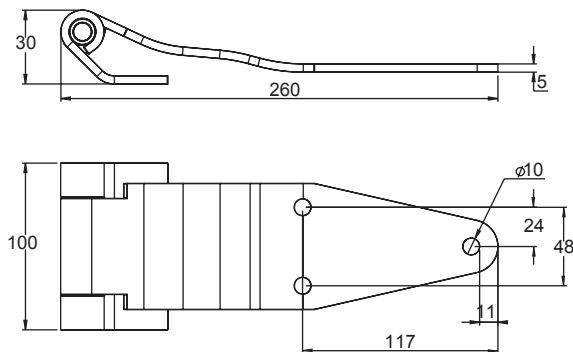
Steel

FINISH

Zinc Plated

FEATURES

Used where it is necessary to swing doors well past the 180 arc. Carries doors clear of corner posts and lintels.



Multi Purpose Hinge - Bent

TDH3196ZP-B

MATERIAL

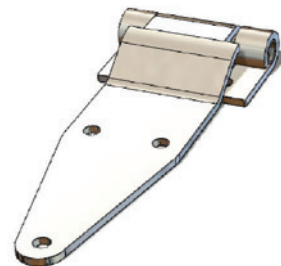
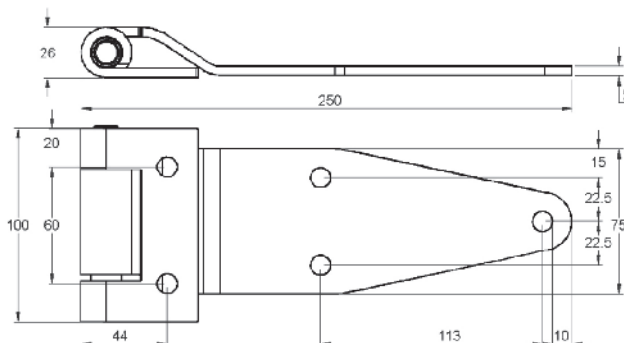
Steel

FINISH

Zinc Plated

FEATURES

Heavy duty
PVC Bushed Non-Sag
For use with Door Seal



Multi Purpose Hinge - Straight

TDH3196ZP-S

MATERIAL

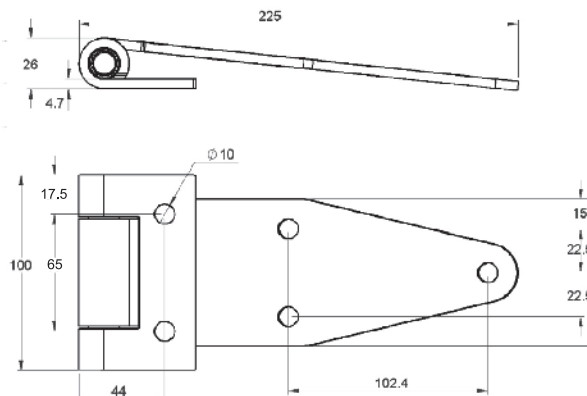
Steel

FINISH

Zinc Plated

FEATURES

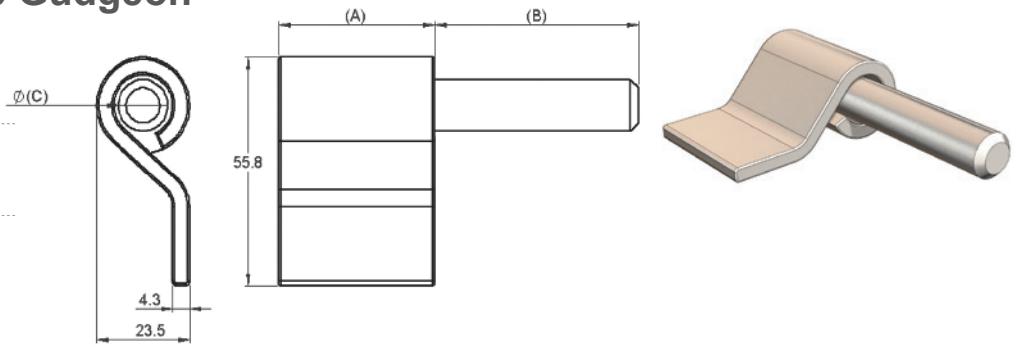
Heavy duty
PVC Bushed Non-Sag



Drop Side Tailgate Gudgeon DSGNB96

MATERIAL
Steel

FINISH
See Table



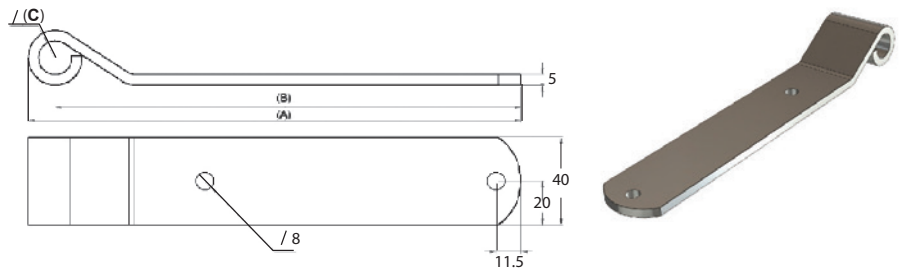
Part No.	A	B	C	Finish
DSGNB96MS-LH	54	42	13	Steel L/H
DSGNB96MS-RH	54	42	13	Steel R/H
DSGNB96ZP-LH	54	42	13	Zinc L/H - Drilled
DSGNB96ZP-RH	54	42	13	Zinc R/H - Drilled

Drop Side Tailgate Straps DSH095, DSH235

MATERIAL
Steel

FINISH
See Table

FEATURES
DSH235ZP-D - Supplied with Nylon Bush

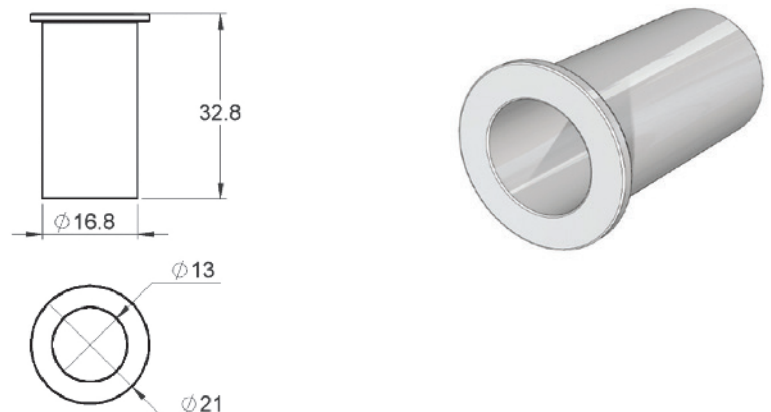


Part No.	A	B	C	Finish
DSH095MS-NB	95	88	13	Steel
DSH095ZP-NB	100	88	13	Zinc Plated-Drilled
DSH235ZP-NB	235	225	13	Zinc Plated-Drilled
DSH235ZP-D	235	225	13	Zinc Plated-Drilled / Bushed

Nylon Bush DSBUSH-W

MATERIAL
Nylon

FINISH
White



Tailboard Hinge Gudgeon

DSGB130MS, DSGB130ZP, DSGB130ZP-D, DSGB130SS-D

MATERIAL

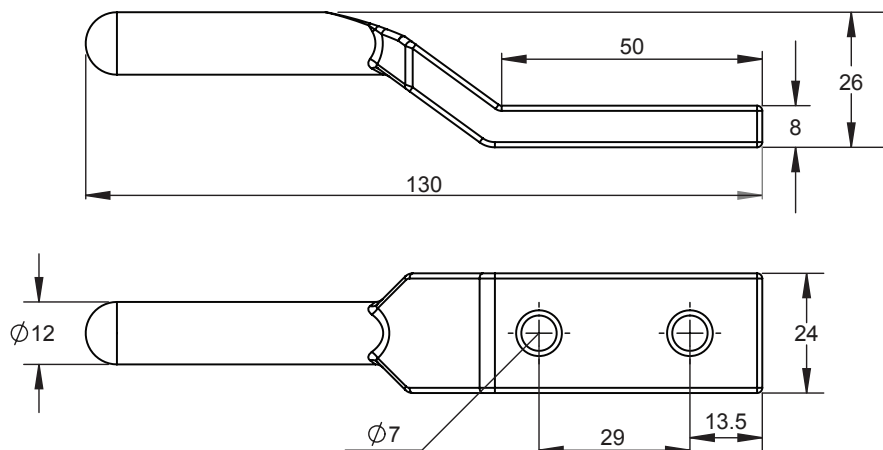
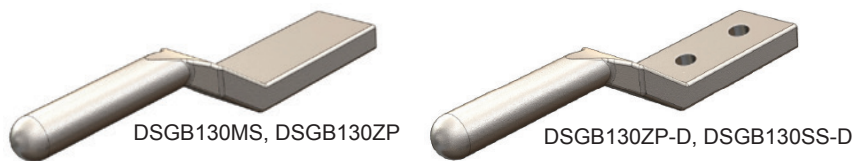
DSGB130MS, DSGB130ZP, DSGB130ZP-D - Forged Steel
 DSGB130SS-D - Forged Stainless Steel

FINISH

DSGB130MS - Raw
 DSGB130ZP, DSGB130ZP-D - ZP
 DSGB130SS-D - Stainless Steel

FEATURES

DSGB130MS - Weld on
 DSGB130ZP - Weld on
 DSGB130ZP-D - Bolt on
 DSGB130SS-D - Bolt on



Straps Hinges(PACK)

DSH100, DSH150, DSH250, DSH300

MATERIAL

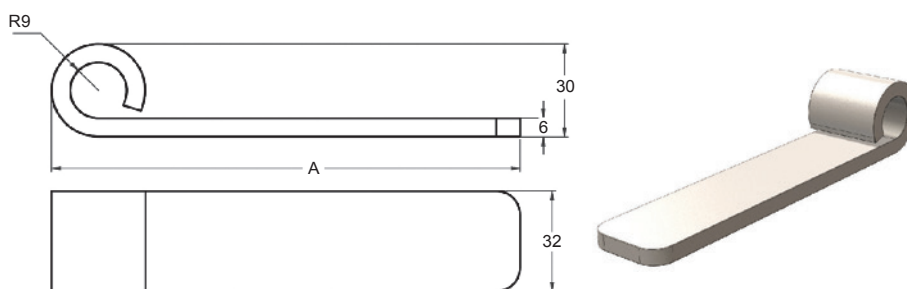
Steel and Stainless Steel

FINISH

Raw or Zinc Plated

FEATURES

DSH250SSP-PACK &
 DSH265SSP-PACK includes
 Tailboard Hinge Gudgeon and
 Nylon Bush set



Part No.	Length A	Material
DSH100MS	100mm	Steel
DSH100ZP	100mm	Zinc Plated
DSH150ZP	150mm	Zinc Plated
DSH250MS	250mm	Steel
DSH250ZP	250mm	Zinc Plated
DSH250SS	250mm	Stainless Steel
DSH250SSP-PACK	250mm	Stainless Steel
DSH265SSP-PACK	265mm	Stainless Steel
DSH300MS	300mm	Steel
DSH300ZP	300mm	Zinc Plated

Aluminium strap hinge LH, RH DSH180AL-LH, DSH180AL-RH

MATERIAL

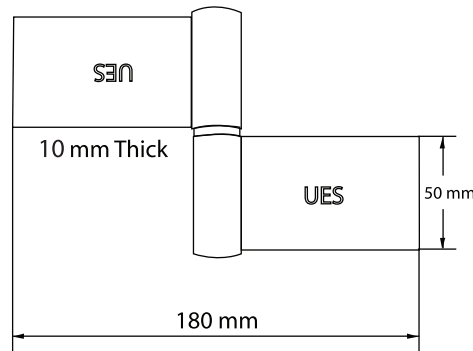
Aluminium

FINISH

Raw

FEATURES

Complete with Bush



Drop Side Tailgate Strap Hinge - Weld on DSH140MSHD

MATERIAL

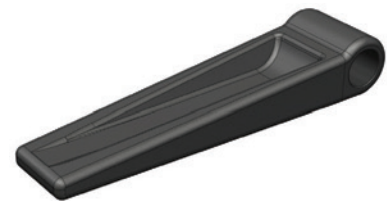
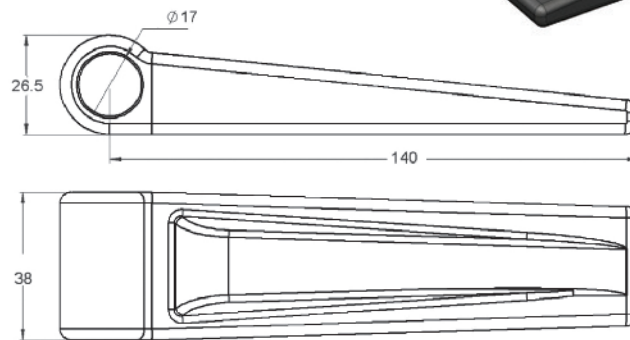
Forged Steel

FINISH

Raw

WEIGHT

430g



Drop Side Tailgate Strap Hinge - Weld on DSH190MSHD

MATERIAL

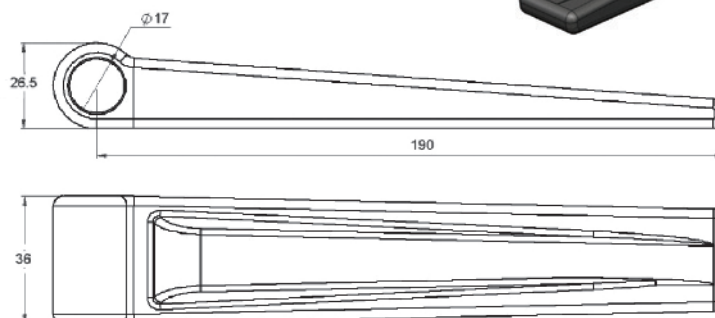
Forged Steel

FINISH

Raw

WEIGHT

680g



Drop Side Tailgate Strap Hinge - Weld on DSH095MSHD

MATERIAL

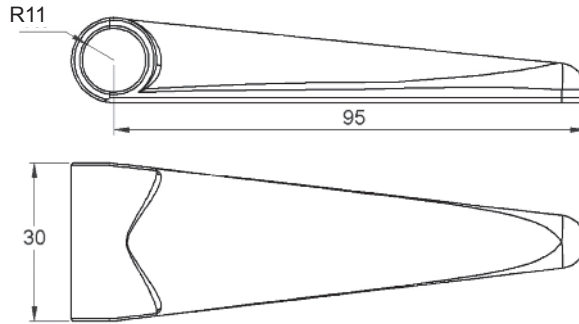
Forged Steel

FINISH

Raw

WEIGHT

430g



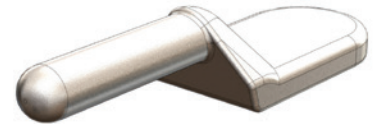
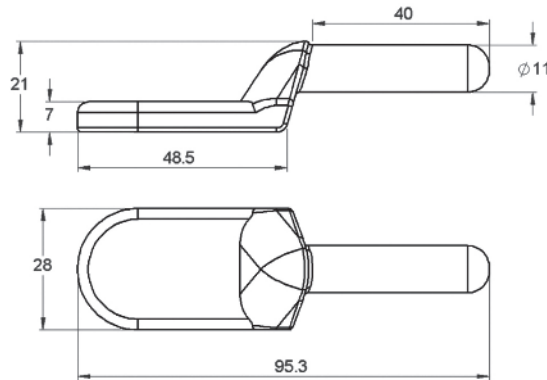
Drop Side Tailgate Strap Hinge - Weld on DSGMSHD-1

MATERIAL

Forged Steel

FINISH

Raw



Drop Side Tailgate Gudgeon Pin DSGMSHD-2

MATERIAL

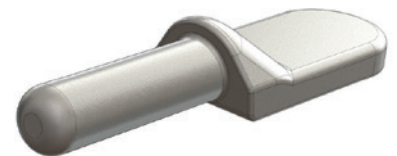
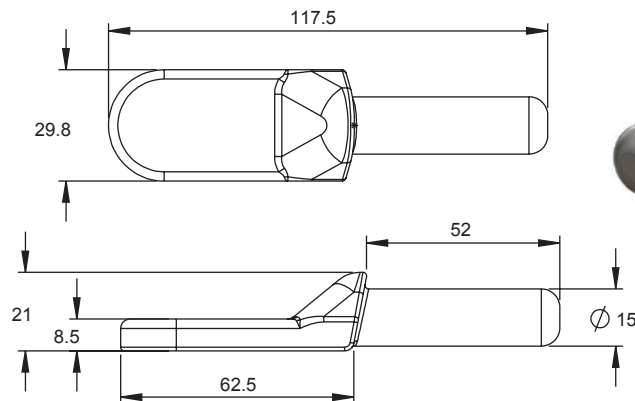
Steel

FINISH

Raw

WEIGHT

200g



Aluminium/Rubber Hinge

CHAL0235, CHAL0236, CHAL0237

MATERIAL

CHAL0235, CHAL0236 - Aluminium
 CHAL0237 - Rubber

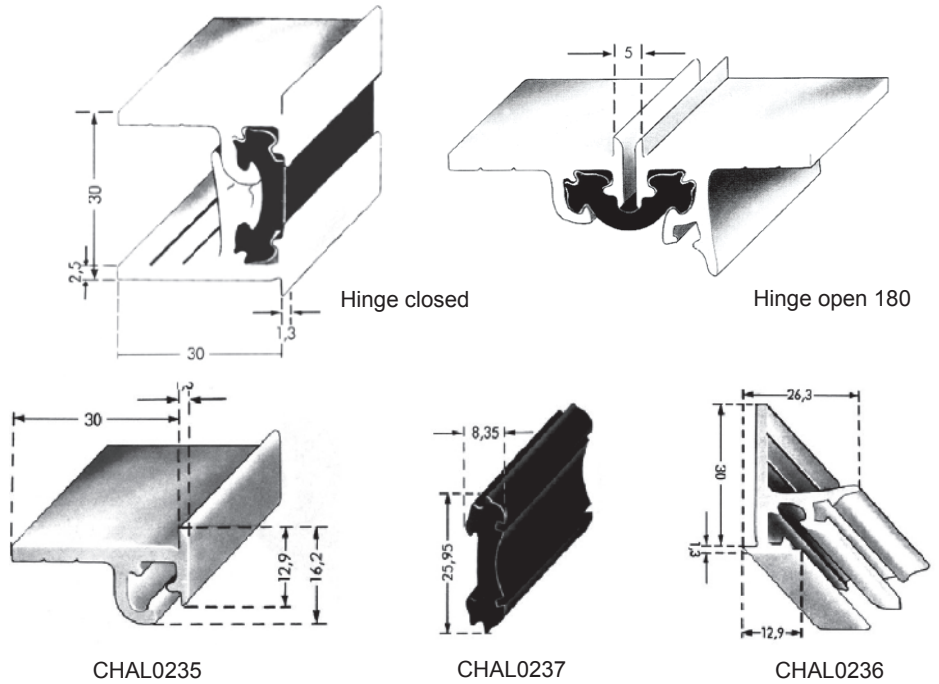
FINISH

CHAL0235, CHAL0236 - Anodised
 CHAL0237 - EPDM Shore 70

FEATURES

Aluminium Extrusions - 5M Lengths
 Rubber Section - per metre

CHAL0235 - Hinge Upper profile
 CHAL0236 - Hinge Lower profile
 CHAL0237 - Hinge Section



Centaflex Continuous Hinge

CHPL1-6, CHPL2-0, CHPL2-3, CHPL2-5, CHPL3-0, CHPL4-7

MATERIAL

PVC

FINISH

Black

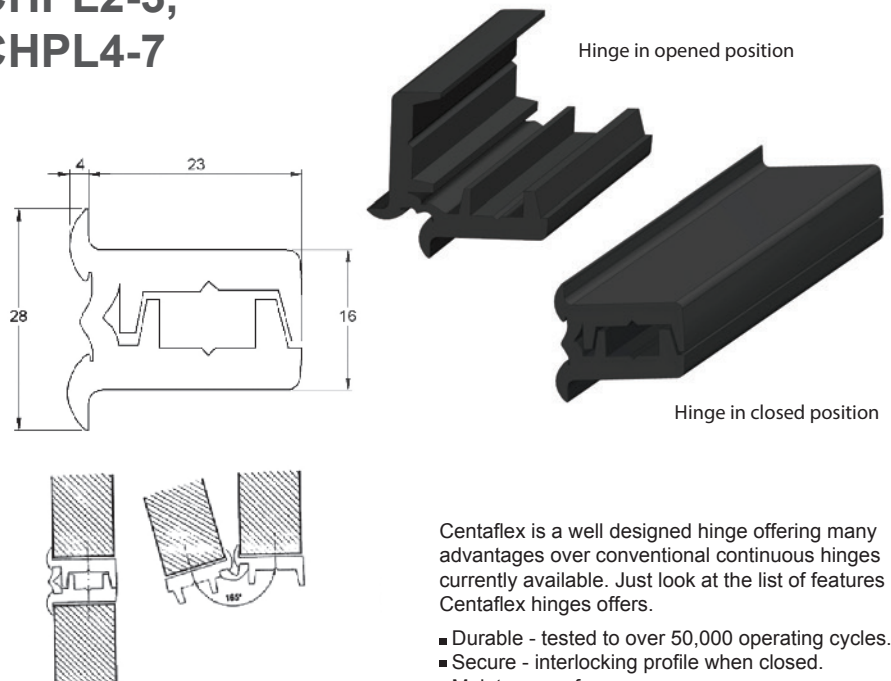
FEATURES

CHPL1-6 - 1.6m length
 CHPL2-0 - 2m length
 CHPL2-3 - 2.3m length
 CHPL2-5 - 2.5m length
 CHPL3-0 - 3m length
 CHPL4-7 - 4.7m length

An established concept in hinge design. Centaflex is a stylish, one piece, continuous hinge developed taking full advantage of the latest advances in new materials and manufacturing technology.

The membrane of the Centaflex hinge is a flexible resin comprising of a patented blend of polyester elastomers combining the high strength of engineering resins with excellent flexibility. The result is that the Centaflex hinge has an excellent flex-life at temperatures ranging from -40C° to 50C°.

During the manufacturing process; co-extruded rigid P.V.C profiles are fused together with the molten, Centaflex hinge membrane creating an extremely strong and resilient hinge. For example a one metre length fitted horizontally has a S.W.L of 100kgs.



Centaflex is a well designed hinge offering many advantages over conventional continuous hinges currently available. Just look at the list of features Centaflex hinges offers.

- Durable - tested to over 50,000 operating cycles.
- Secure - interlocking profile when closed.
- Maintenance free.
- Aesthetically pleasing-low exterior profile.
- Concealed fixings.
- Easy to fit.
- Weatherproof continuous seal.
- Corrosion resistant.
- U.V light stabilised.
- Excellent flex life.
- Competitively priced.

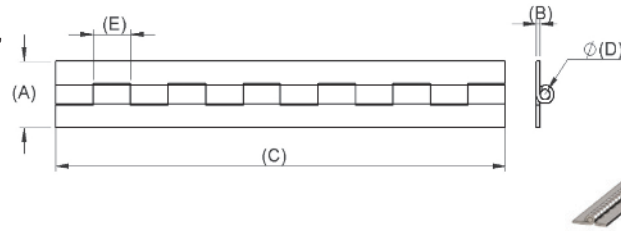
Continuous Hinges

MATERIAL

Galvanised Steel, Stainless Steel 304,
Stainless Steel 316, Mild Steel
Aluminium

FINISH

Mild Steel is Raw or Galvanised
Steel is Zinc Plated
Aluminium is Raw



Mild Steel Continuous Hinge

Part No.	Width (A)	Gauge (B)	Length (C)	Material	Knuckle (E)	Pin (D)
CH32X1-2MS18	32	1.2	1800	M/Steel	30	3.0MS
CH38X1-2MS18	38	1.2	1800	M/Steel	12	3.2MS
CH40X1-2MS18	40	1.2	1800	M/Steel	30	3.0MS
CH40X1-5MS18	40	1.5	1800	M/Steel	15	4.0MS
CH50X1-6BS18	50	1.6	1800	M/Steel	40	4.5BR
CH60X2MS21	60	2.0	2100	M/Steel	30	6.0BR
CH60X2MS21	60	2.0	2100	M/Steel	30	6.0BR
CH80X3MS20	80	3.0	2080	M/Steel	40	10.0MS
CH82X4-5MS20	82	4.5	2010	M/Steel	40	10.0MS

Galvanised Continuous Hinge

Part No.	Width (A)	Gauge (B)	Length (C)	Material	Knuckle (E)	Pin (D)
CH25X1-2GV18	25	1.2	1800	Galv.	20	3.2BR
CH32X1-2GV18	32	1.2	1800	Galv.	20	4.0BR
CH38X1-2GV18	38	1.2	1800	Galv.	30	3.2SS
CH38X1-6GV18	38	1.6	1800	Galv.	40	4.5SS
CH40X1-2GV18	40	1.2	1800	Galv.	30	3.0BR
CH50X1-2GV18	50	1.2	1800	Galv.	30	3.0BR
CH50X1-6GV18	50	1.6	1800	Galv.	40	5.0SS
CH57X1-5GV21	57	1.6	2160	Galv.	40	4.76BR
CH57X2.0GV21	57	2.0	2160	Galv.	40	6.0BR
CH63X2.0GV21	63	2.0	2160	Galv.	40	6.0BR
CH76X1-5GV21	76	1.6	2160	Galv.	40	5.0SS
CH127X3-0GV21	127	2.5	2400	Galv.	40	6.3SS
CH40X1.2GV18D	40	1.2	1800	Galv.	30	3.0BR

304 Stainless Steel Continuous Hinge

Part No.	Width (A)	Gauge (B)	Length (C)	Material	Knuckle (E)	Pin (D)
CH25X1-2SS18	25	1.2	1800	S/S 304	20	3.0 SS
CH32X1-2SS18	32	1.2	1800	S/S 304	20	3.2 SS
CH40X1-2SS18	40	1.2	1840	S/S 304	40	4.0 SS
CH40X1-5SS18	40	1.5	1800	S/S 304	40	4.0 SS
CH50X1-2SS18	50	1.2	1800	S/S 304	30	3.2 SS
CH50X1-5SS18	50	1.5	1800	S/S 304	15	4.0 SS
CH50X1-6X18	50	1.6	1800	S/S 304	12	4.5 SS
CH57X1-6SS21	57	1.6	2160	S/S 304	40	4.76 SS
CH63X1-5SS18	63	1.6	1800	S/S 304	40	5.0 SS
CH80X3-0SS20	80	3.0	2000	S/S 304	40	6.0 SS
CH120X2-0SS21	120	2.0	2100	S/S 304	30	6.0 SS

316 Stainless Steel Continuous Hinge

Part No.	Width (A)	Gauge (B)	Length (C)	Material	Knuckle (E)	Pin (D)
CH30X1-0SS20	30	1.0	2040	S/S 316	15	2.0 SS
CH50X1-2SS20	50	1.2	2000	S/S 316	40	3.0 SS
CH60X2-0SS20	60	2.0	2040	S/S 316	30	6.0 SS

Aluminium Continuous Hinge

Part No.	Width (A)	Gauge (B)	Length ()	Material	Knuckle (E)	Pin (D)
CH40X1-5AL20	40	1.5	2000	Alum	15	4.0 S/S
CH50X1-5AL20	50	1.5	2000	Alum	30	4.0 S/S
CH60X2-0AL20	60	2.0	2000	Alum	30	6.0 S/S

Butt Hinge

1349-001, 1349-002, 1349-003

MATERIAL

Reinforced Nylon
Brass Pin

FINISH

Black

WEIGHT

1349-001 - 30g

1349-002 - 40g

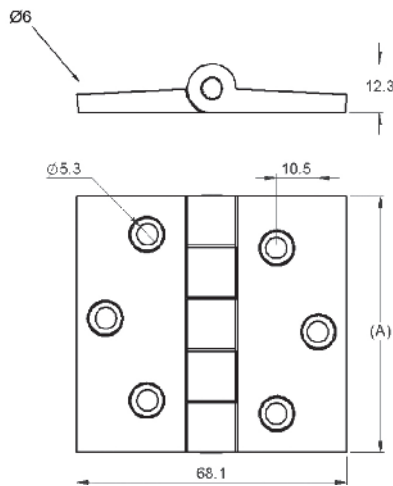
1349-003 - 70g

DIMENSION (A)

1349-001 - 38mm

1349-002 - 63mm

1349-003 - 102mm



UES
international

Engineering Solutions
Since 1904

Advertisement for UES International. The central image is a red semi-truck with a white trailer featuring the UES logo. Surrounding the truck are circular inset images showing various hardware components: a metal bracket, a black handle, a metal latch, and a metal step/ladder. The background is a dark blue sky with clouds.

Transport Hardware & Rubber

Fasteners, Hinges, Handles, Locks, Gas Struts, Rubber & Seals, Toolboxes & Water tanks,
Steps & Ladders, Side Protection devices, Seating, Ventilation, Accessories.

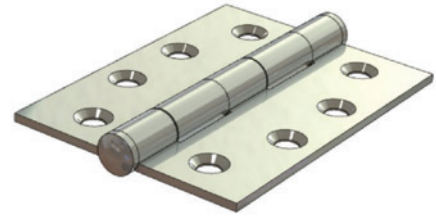
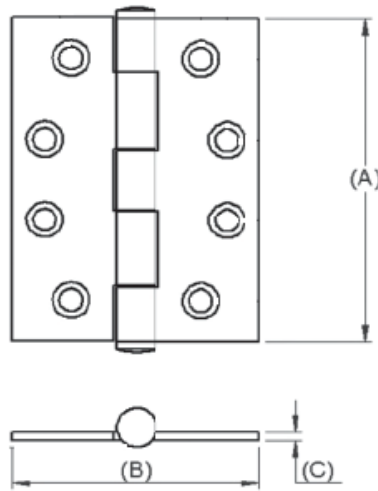
www.uesint.com Ph(AUS): 1300 00 1904 info@uesint.com

Sydney • Brisbane • Melbourne • Perth • Adelaide • Darwin • Nowra • Auckland

Butt Hinge - Fixed Pin

MATERIAL

As per table



Unplated	Alternate Part#	Height (A)	Open Width(B)	Gauge (C)
BH05038X1-2MS	91921	50	38	1.2mm
BH07050X1-5MS	91931	70	50	1.5mm
BH10075X1-6MS	91951	100	75	1.6mm
BH10075X2-5MS		100	75	2.5mm
BH100100X2-5MS	89921	100	100	2.5mm

Zinc Plated	Alternate Part#	Height (A)	Open Width(B)	Gauge (C)
BH03525X1-2ZP		35	25	1.2mm
BH05038X1-2ZP	91925	50	38	1.2mm
BH07050X1-5ZP	91935	70	50	1.5mm
BH08560X1-6ZP	91945	85	60	1.6mm
BH10075X1-6ZP	91955	100	75	1.6mm
BH10075X2-5ZP	89915	100	75	2.5mm
BH100100X2-5ZP	89925	100	100	2.5mm

Stainless Steel Alternate Part#	Height(A)	Open Width (B)	Gauge (C)
80129	70	50	1.5mm
80139	85	60	1.5mm
80149	100	75	1.5mm
81149	100	75	2.5mm
81249	100	100	2.5mm

Lift-Off 'Torpedo' Hinges LOBH067CP-RH, LOBH067CP-LH

MATERIAL

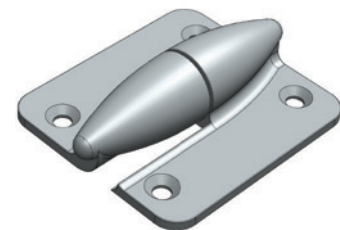
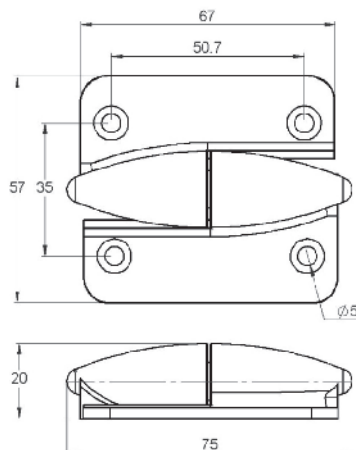
Zinc-alloy die cast

FINISH

Chrome plated

FEATURES

Stainless steel pin



Closing Spring Hinge

BH10083X5-5AL-CS

MATERIAL

Aluminium
Stainless Steel Closing Spring

FINISH

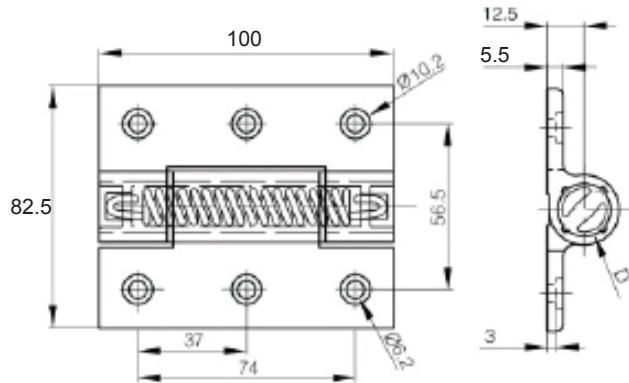
Clear Anodised

FEATURES

Pin diameter: 24mm
Opening Angle: 270°
Weight: 183g

Opening spring force :
M(0°) : 3.80 N.m / M(90°) : 3.10 N.m / M(180°) : 2.40 N.m

Closing spring force :
M(0°) : 2.20 N.m / M(90°) : 2.90 N.m / M(180°) : 3.50 N.m



Free Swing Hinge

BH10083X5-5AL

MATERIAL

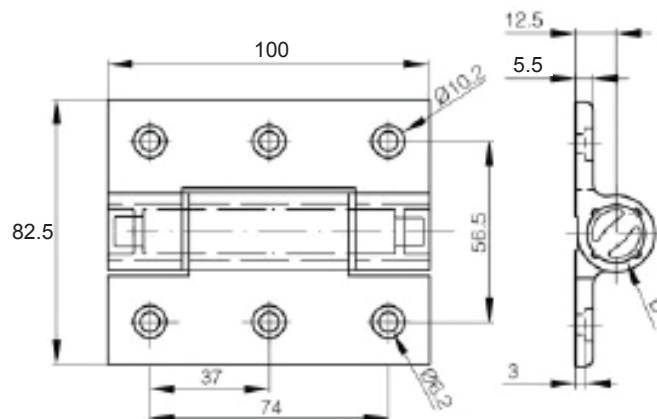
Aluminium

FINISH

Clear Anodised

FEATURES

Pin diameter: 24mm
Opening Angle: 270°
Weight: 148g



Opening Spring Hinge BH06755X4-5AL-OS

MATERIAL

Aluminium

FINISH

Clear Anodised

FEATURES

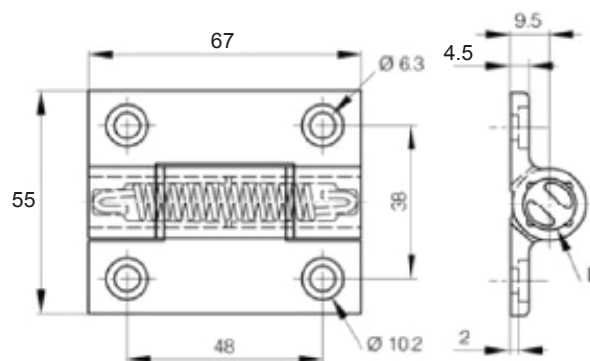
Pin diameter: 13mm
Opening Angle: 180°
Weight: 65g

Opening spring force :

$M(0^\circ) : 0.7 \text{ N.m} / M(90^\circ) : 0.45 \text{ N.m} / M(180^\circ) : 0.23 \text{ N.m}$

Closing spring force :

$M(0^\circ) : 0.26 \text{ N.m} / M(90^\circ) : 0.5 \text{ N.m} / M(180^\circ) : 0.76 \text{ N.m}$



Closing Spring Hinge BH06755X4-5AL-CS

MATERIAL

Aluminium

FINISH

Clear Anodised

FEATURES

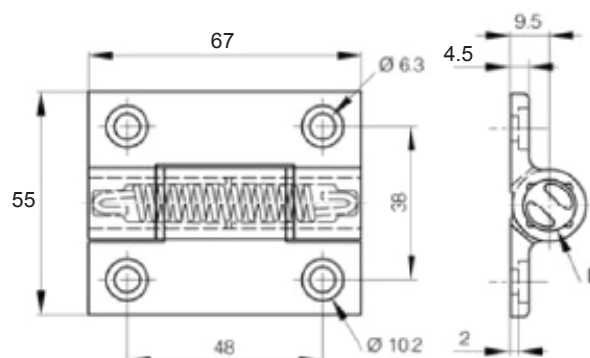
Pin diameter: 13mm
Opening Angle: 180°
Weight: 65g

Opening spring force :

$M(0^\circ) : 0.7 \text{ N.m} / M(90^\circ) : 0.45 \text{ N.m} / M(180^\circ) : 0.23 \text{ N.m}$

Closing spring force :

$M(0^\circ) : 0.26 \text{ N.m} / M(90^\circ) : 0.5 \text{ N.m} / M(180^\circ) : 0.76 \text{ N.m}$



Adjustable Friction Hinge DPHE62B

MATERIAL

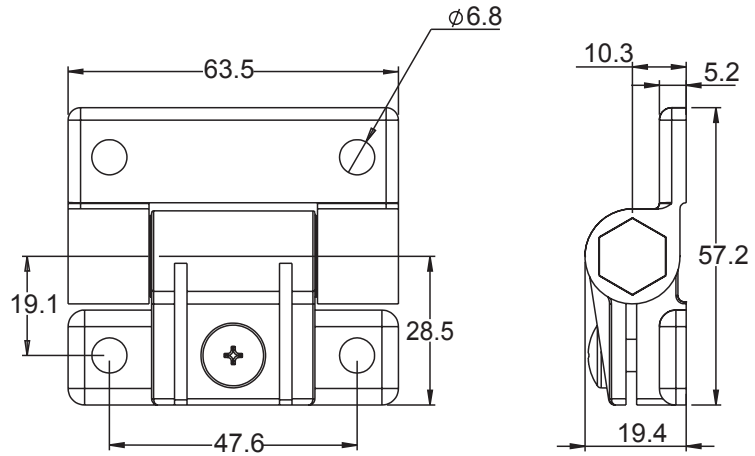
Acetal

FINISH

Black

FEATURES

Infinite door open positions. Adjust screw to get desired door swing action.



Torque Hinge - 0.35N DPHTSS

MATERIAL

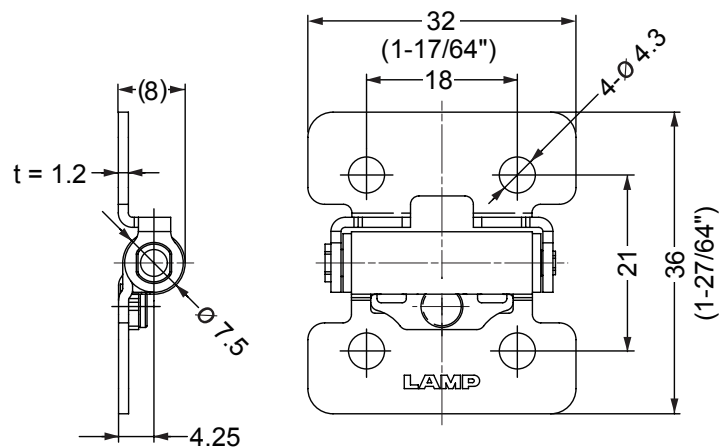
Stainless Steel 304

FINISH

Polished

FEATURES

Hinge with friction torque holds lid/door in desired position.
Capable in harsh environments.
Free stop between 0°-180°
Initial torque may vary -20% to +40%



Position Hinges

C6 Hinges

MATERIAL

Nylon

FINISH

Black & White

FEATURES

Designed to accommodate M5 screws/bolts

BLACK

DPHC6B2 80° Angle, Medium Torque, 1.7Nm

DPHC6B3 80° Angle, Strong Torque, 1.9Nm

DPHC6B5 115° Angle, Medium Torque, 1.7Nm

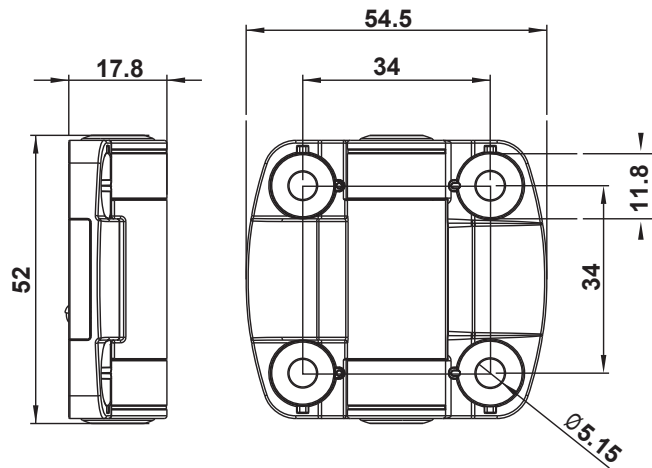
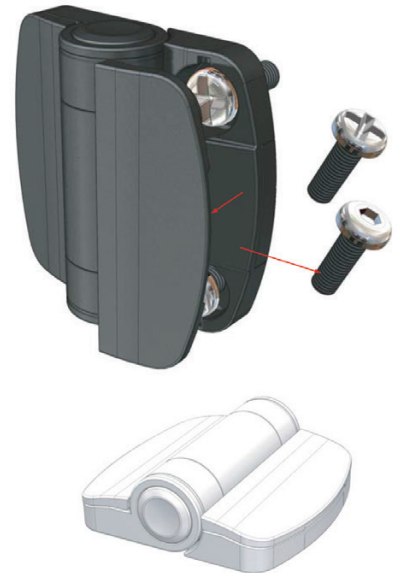
DPHC6B6 115° Angle, Strong Torque, 1.9Nm

DPHC6B7 150° Angle, Light Torque, 1.4Nm

WHITE

DPHC6W5 115° Angle, Medium Torque, 1.7Nm, White

DPHC6W6 115° Angle, Strong Torque, 1.9Nm



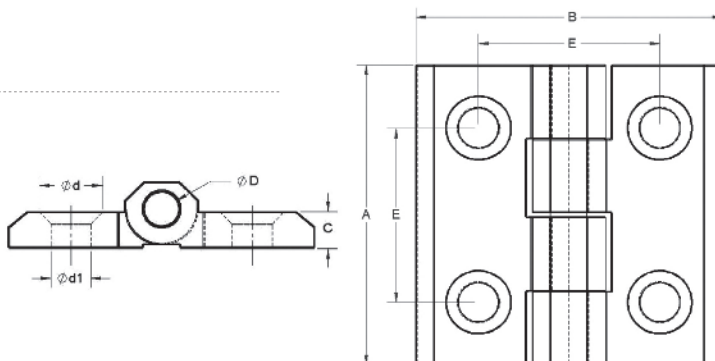
Polyamide Hinge With Counter Sunk Holes BH04040X5PB, BH05050X6PB

MATERIAL

Polyamide

FINISH

Black



Part No.	A	B	C	D	E	d	d1	Material	Weight
BH04040X5PB	40	40	5	4	25	10,2	5,3	Polyamide Black	44g
BH05050X6PB	50	50	6	6	30	12,4	6,4	Polyamide Black	56g

Polyamide Hinge With Studs

BH05050X6PB-RF, BH04040X5PB-RF

MATERIAL

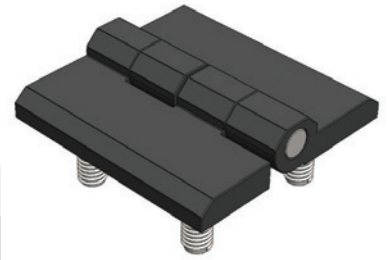
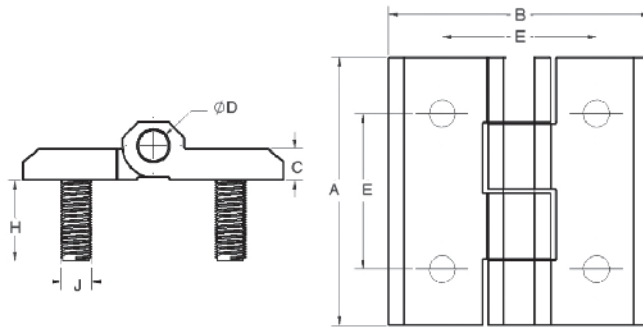
Polyamide.
304 S/S Stud

FINISH

Black

FEATURES

Concealed Fix



Part No.	A	B	C	D	E	H	J	Material	Weight
BH05050X6PB-RF	40	40	5	4	25	12	M5	Polyamide Black	56g
BH04040X5PB-RF	50	50	6	6	30	12	M6	Polyamide Black	76g

Polyamide Hinge With Counter Sunk Holes and Studs

BH05050X6PB-MF

MATERIAL

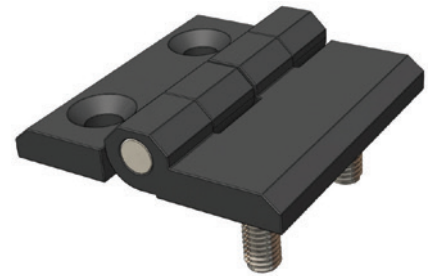
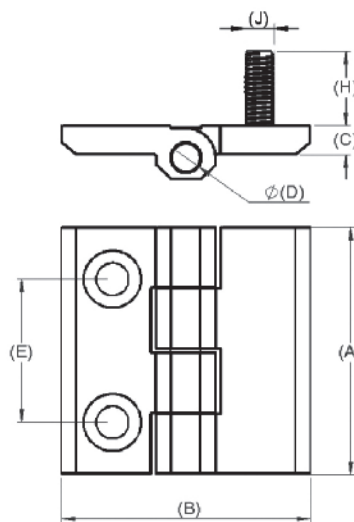
Polyamide.
304 S/S Stud

FINISH

Black

FEATURES

Concealed Fix 1 Leaf



Part No.	A	B	C	D	E	H	J	Material	Weight
BH05050X6PB-MF	50	50	6	6	30	12	M6	Polyamide Black	76g

Lift Off Hinges

LOPH064BP

LOPH064BP-RH

LOPH064BP-LH

MATERIAL

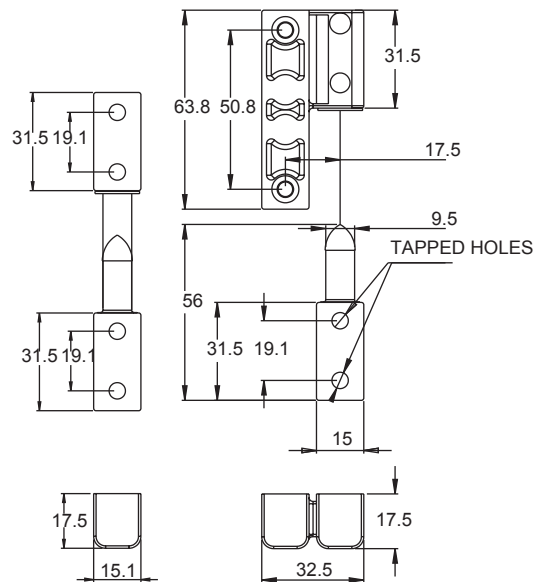
Zinc Alloy

FINISH

Black Powder Coated

FEATURES

Allows for quick, easy door removal. Door can also be permanently installed.



LOPH064BP
In line

LOPH064BP-RH
Offset

LOPH064BP-LH
Offset

Lift-Off Moulded Hinges

LOBH074PB-RH

LOBH074PB-LH

MATERIAL

Glass filled Nylon

FINISH

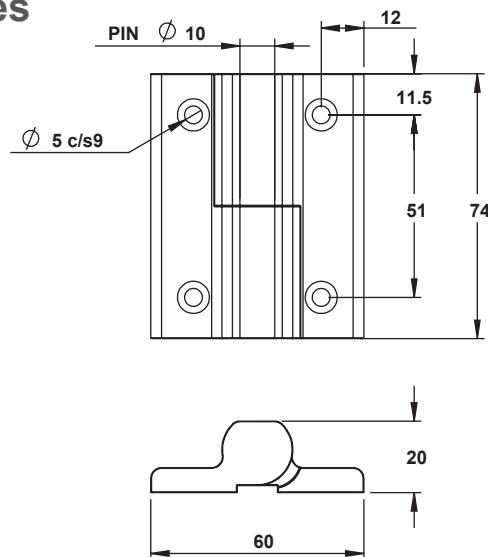
Black

FEATURES

S/S Pin

LOBH074PB-RH Right Hand

LOBH074PB-LH Left Hand



Lift-Off Stainless Steel Hinge

LOBH100SS-RH-RF, LOBH100SS-LH-RF

LOBH100SS-LH, LOBH100SS-RH

MATERIAL

Stainless Steel

FINISH

Polished

FEATURES

Countersunk Holes

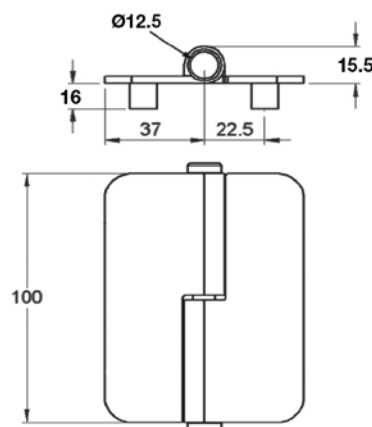
LOBH100SS-RH-RF - Right Hand

LOBH100SS-LH-RF - Left Hand

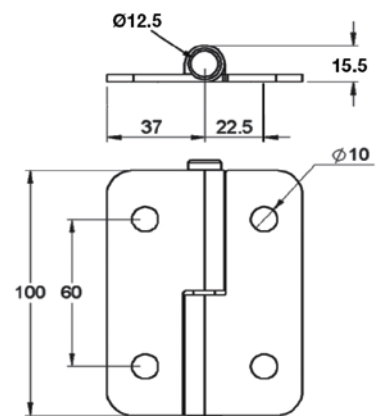
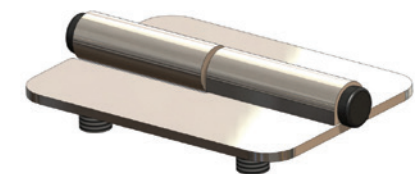
M8 Threaded Studs

LOBH100SS-LH - Left hand

LOBH100SS-RH - Right hand



LOBH100SS-RH-RF - Right Hand



LOBH100SS-RH - Right hand

Fixed Pin Hinge BH13278X3SS

MATERIAL

Stainless Steel 304

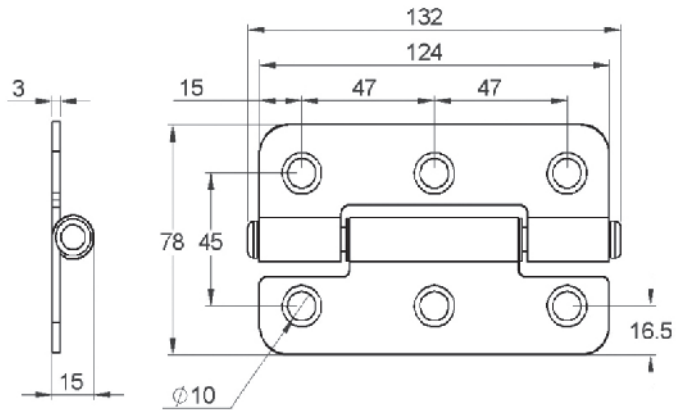
FINISH

Polished

FEATURES

Hinge for large enclosure doors where frame width is restricted but relatively heavy loading is anticipated.

Rig tests show that two hinges on a 1m frame carried a load of 100kg without damage, equivalent of a moment of force of 100NM.



Flush Pin Hinge LOBH075CP-LH LOBH075CP-RH

MATERIAL

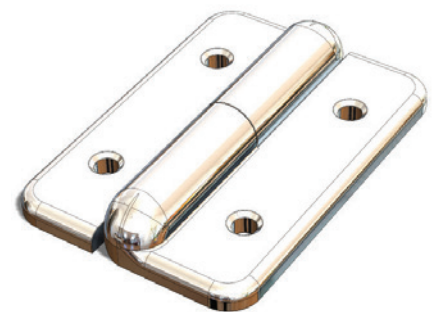
Zinc Alloy
ZP Steel Hinge

FINISH

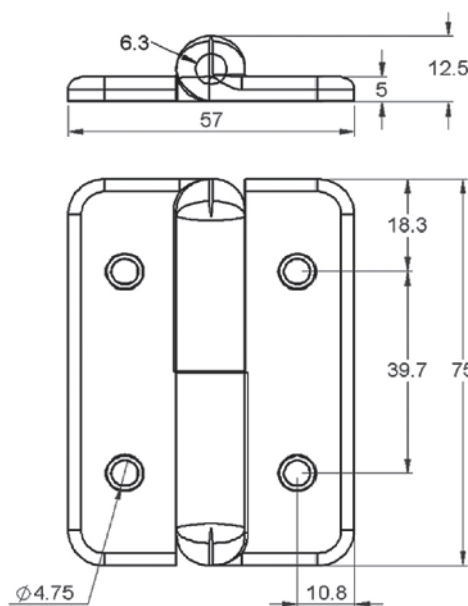
Chrome Plated

FEATURES

LOBH075CP-LH - Left Handed
LOBH075CP-RH - Right Handed



LOBH075CP-RH - Right Handed



Hinge - Maintenance Free BH050140X4ZP

MATERIAL

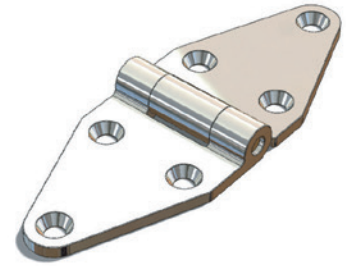
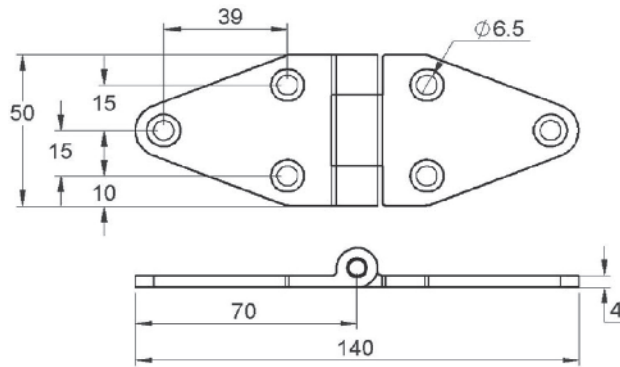
Steel

FINISH

Galvanized

FEATURES

Brass Pin



Hinge - Maintenance Free BH050105X4ZP

MATERIAL

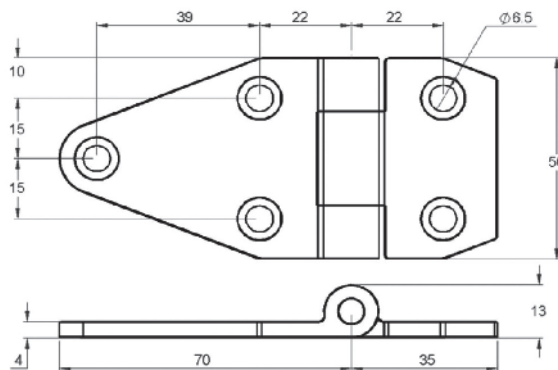
Steel

FINISH

Galvanized

FEATURES

Brass Pin



Hinge - Maintenance Free BH05070X4ZP

MATERIAL

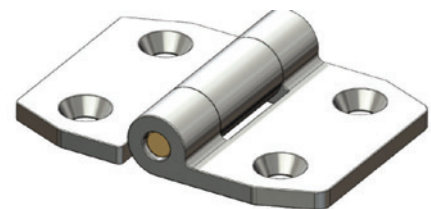
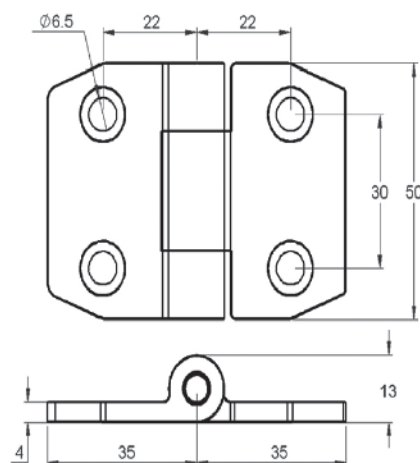
Steel

FINISH

Galvanized

FEATURES

Brass Pin



Pintle Hinges
LOPH080CP
LOPH080SS
LOPH080CP-1
LOPH050CP
LOPH080CP-2
LOPH080CP-3

MATERIAL

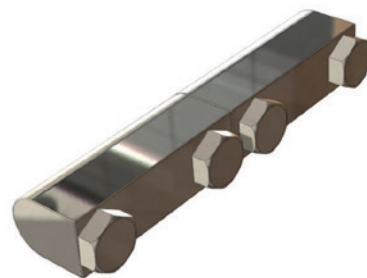
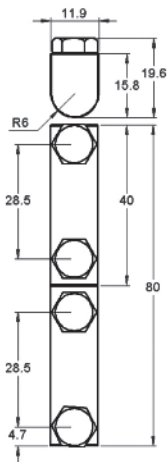
LOPH080CP, LOPH050CP, LOPH080CP-2,
 LOPH080CP-3 - Brass
 LOPH080CP-1 - Zinc Die-Cast
 LOPH080SS - SS316

FINISH

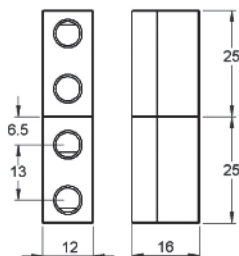
LOPH080CP, LOPH050CP, LOPH080CP-2,
 LOPH080CP-3 - Chrome Plated
 LOPH080CP-1 - Nickel Plated
 LOPH080SS - Polished

FEATURES

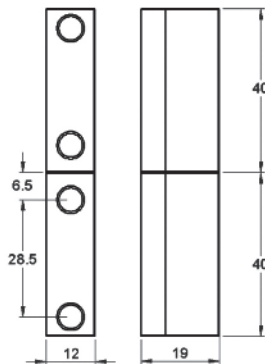
Supplied with screws



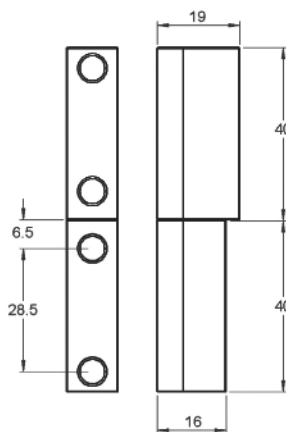
LOPH080CP, LOPH080CP-1



LOPH050CP



LOPH080CP-2



LOPH080CP-3

Pintle Hinge LOPH102CP

MATERIAL

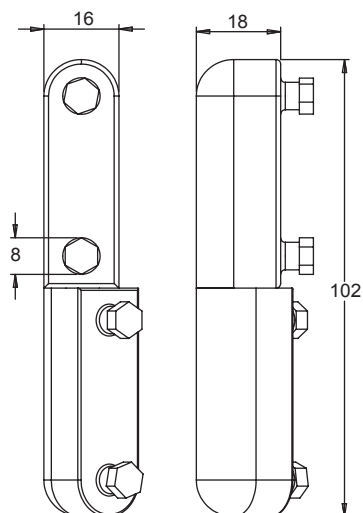
Zinc Alloy

FINISH

Chrome Plated

FEATURES

Stainless Steel Pin.
Supplied with screws



Pintle Hinge LOPH102CP-1

MATERIAL

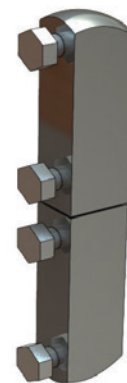
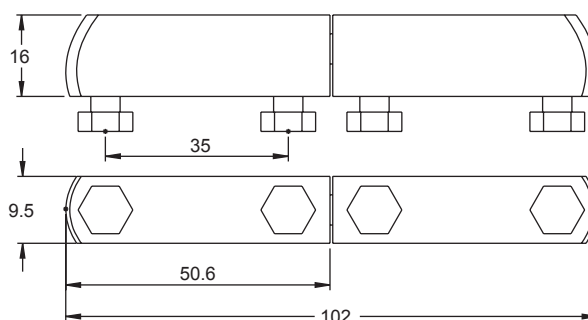
Brass, Stainless Steel pin

FINISH

Chrome Plated

FEATURES

Stainless steel pin
Thread M6
Supplied with screws



Lift-Off Hinge - Concealed Fixing LOBH080BP-RH LOBH080BP-LH

MATERIAL

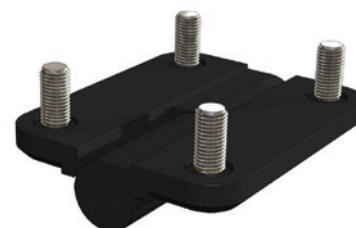
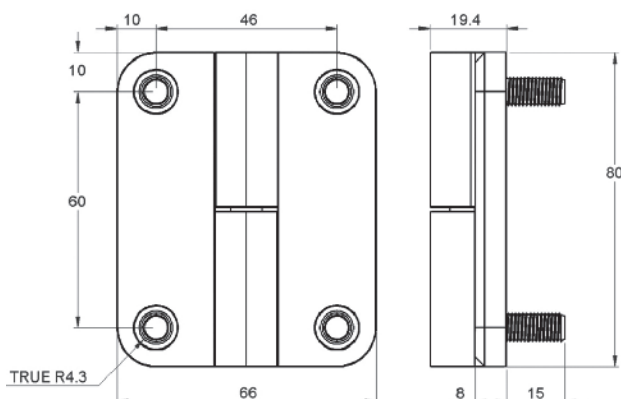
Zinc Alloy

FINISH

Black

FEATURES

Stainless Steel Pin
LOBH080BP-RH - Right hand
LOBH080BP-LH - Left hand



316 Grade Stainless Steel Hinge DH0004SS

MATERIAL

316 Stainless Steel

FINISH

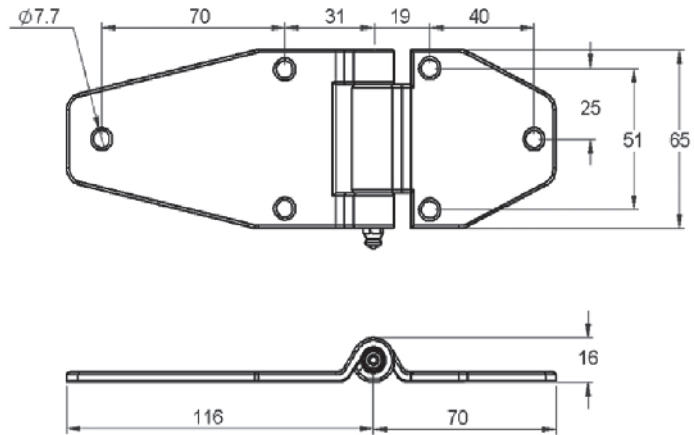
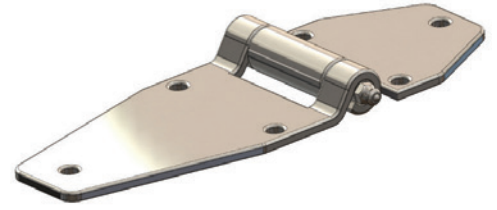
Polished

FEATURES

Our superior stainless steel hinges are manufactured to a very high standard and offer quality at a very competitive price.

Designed for use with commercial vehicles in mind but also suitable for many other applications particularly where resistance to corrosion is of prime importance.

Includes grease nipple.



316 Grade Stainless Steel Hinge DH0005SS

MATERIAL

316 Stainless Steel

FINISH

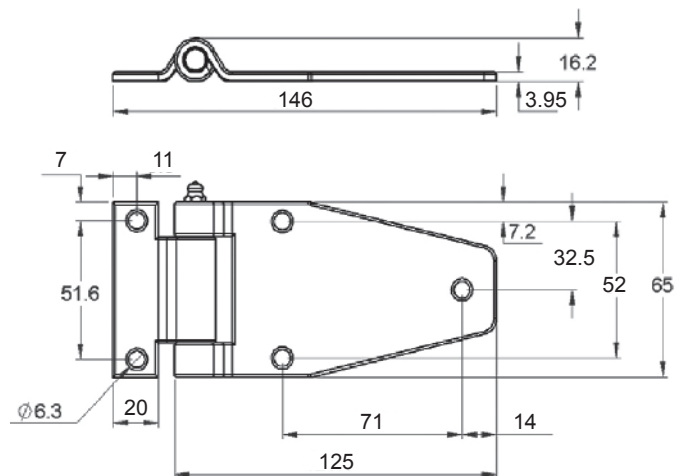
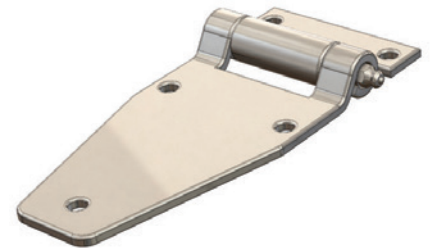
Polished

FEATURES

Our superior stainless steel hinges are manufactured to a very high standard and offer quality at a very competitive price.

Designed for use with commercial vehicles in mind but also suitable for many other applications particularly where resistance to corrosion is of prime importance.

Includes grease nipple.



Concealed Door Removal Hinge

DHF63ZP

DHF63SS

MATERIAL

DHF63ZP - Steel

DHF63SS - Stainless Steel 304

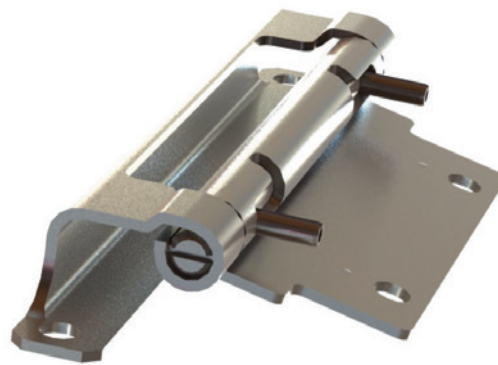
FINISH

DHF63ZP - Zinc Plated

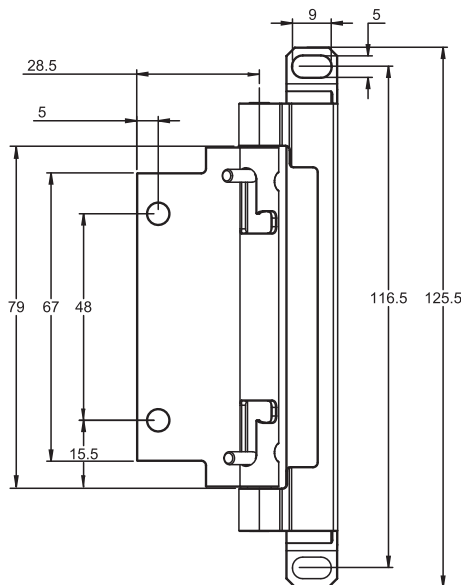
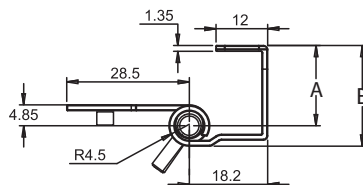
DHF63SS - Raw

FEATURES

Hinge and hardware are concealed.
Three styles, allows for easy removal of door.



	A	B
DHF63ZP	18.2	23.9
DHF63SS	18.2	23.9



Drawer Slides & Gas Struts

TEL(AUS): 1300 00 1904 TEL(NZ): +64 (0)9 633 4019

www.uesint.com

300mm Standard Spring Ball Bearing Hinge GHBO101SZP-LH, GHBO101SZP-RH

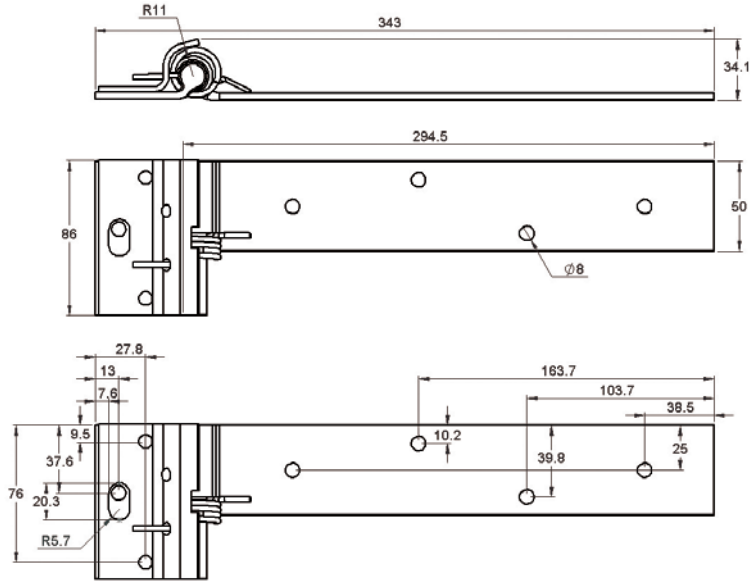
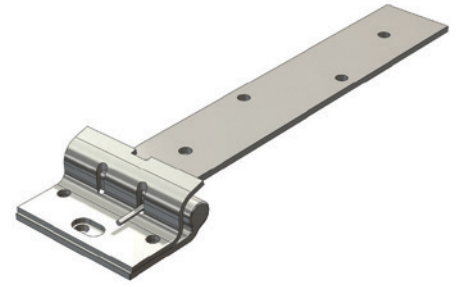
MATERIAL
Steel

FINISH
ZP

WEIGHT
1892g

FEATURES
Left and right hand versions available

GHBO101SZP-LH Left hand
GHBO101SZP-RH Right hand



300mm Standard Ball Bearing Hinge GHBO101ZP-LH, GHBO101ZP-RH

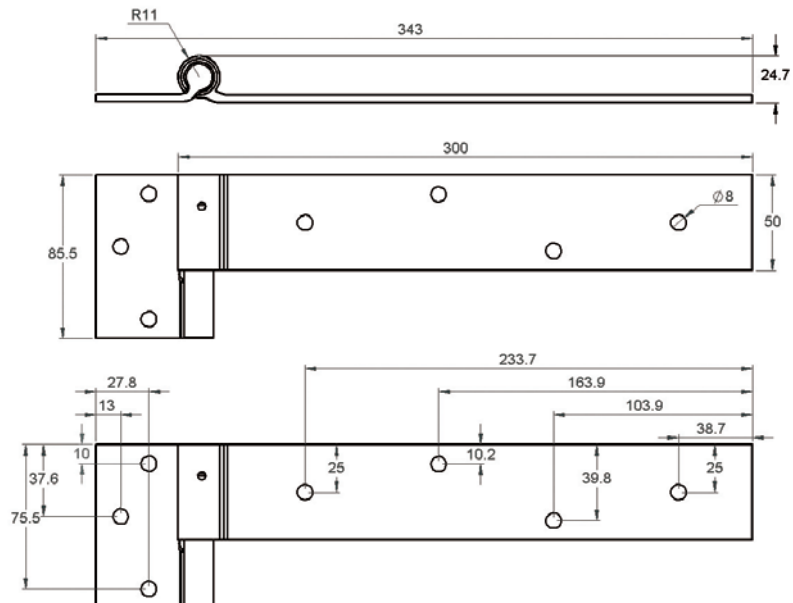
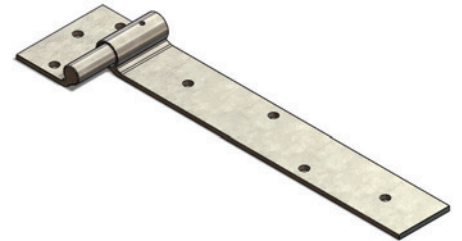
MATERIAL
Steel

FINISH
ZP

WEIGHT
1892g

FEATURES
Left and right hand versions available

GHBO101ZP-LH Left hand
GHBO101ZP-RH right hand



Weld-On Butt Ball Bearing Hinge GHWOBZP-LH, GHWOBZP-RH

MATERIAL

Steel

FINISH

ZP

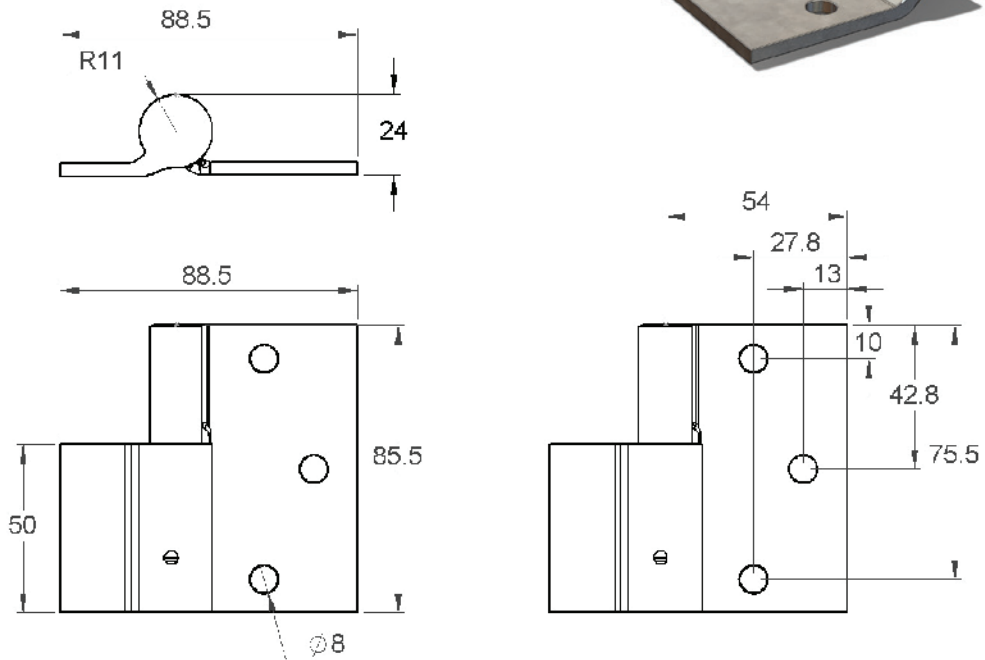
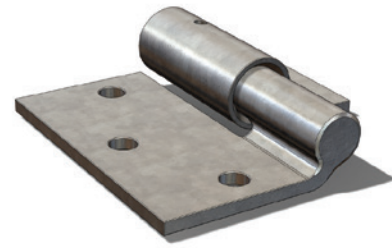
WEIGHT

772g

FEATURES

Left and right hand versions available

GHWOBZP-LH Left hand
GHWOBZP-RH Right hand



Steel to Steel Weld-On Butt Ball Bearing Hinge GHWOFZP-LH, GHWOFZP-RH

MATERIAL

Steel

FINISH

ZP

WEIGHT

792g

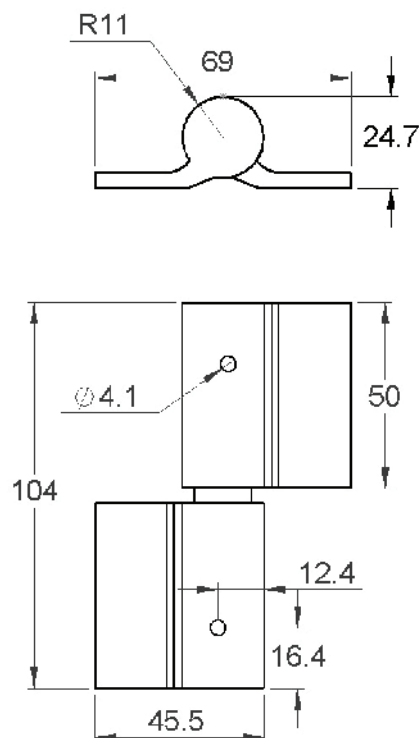
FEATURES

Left and right hand versions available

GHWOFZP-LH Left hand
GHWOFZP-RH Right hand



Pictured: Left Hand Version



Weld-On Narrow Butt Ball Bearing Hinge GHWONBZP-LH, GHWONBZP-RH

MATERIAL

Steel

FINISH

ZP

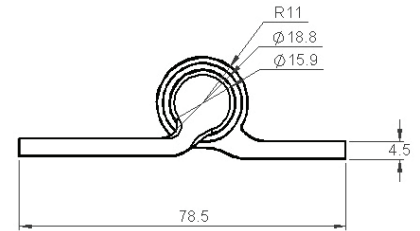
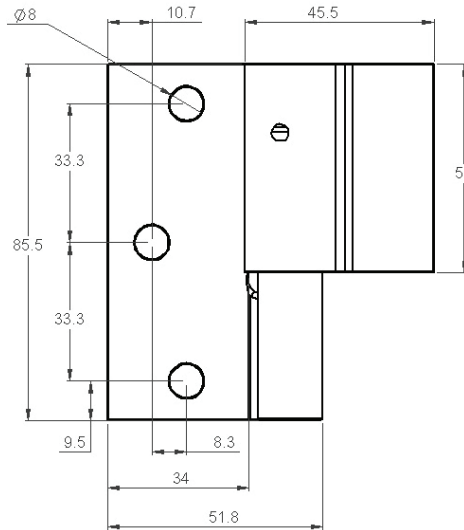
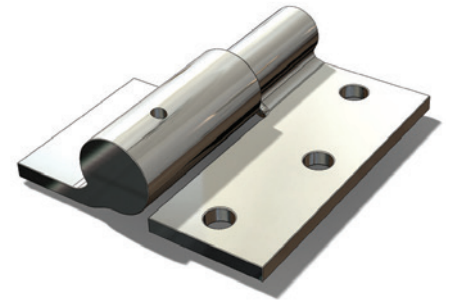
WEIGHT

745g

FEATURES

Left and right hand versions available

GHWONBZP-LH Left hand
GHWONBZP-RH Right hand



Weld-On Type GHWOZP

MATERIAL

Steel

FINISH

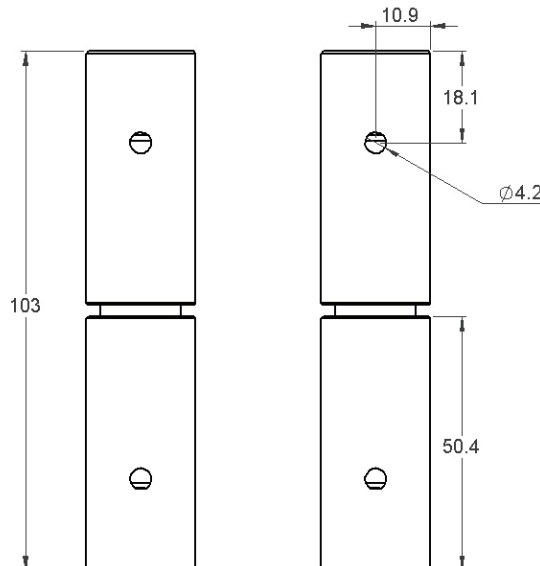
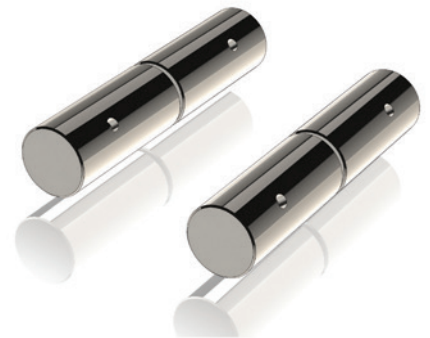
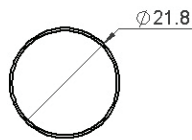
ZP

WEIGHT

554g

FEATURES

22mm Barrel
16mm Pin



Double Butt Ball Bearing Hinge GHBO107ZP-LH, GHBO107ZP-RH

MATERIAL

Steel

FINISH

ZP

WEIGHT

4280g

FEATURES

Left and right hand versions available

GHBO107ZP-LH Left hand
GHBO107ZP-RH Right hand



Pictured: left hand version

Trailer Hardware

Shop Online Now

www.uesint.com

Drop T Locks

Whale Tail Locks

Compression Locks

Weld On Hinges

Lift Off Hinges

Rubber

Over Centre Latches

Gas Struts

TEL(AUS): 1300 00 1904

TEL(NZ): +64 (0)9 633 4019

www.uesint.com

info@uesint.com

Showrooms in Sydney • Brisbane • Melbourne • Perth • Adelaide • Darwin • Nowra • Auckland

Double Butt Ball Bearing Hinge GHBO108ZP-LH, GHBO108ZP-RH

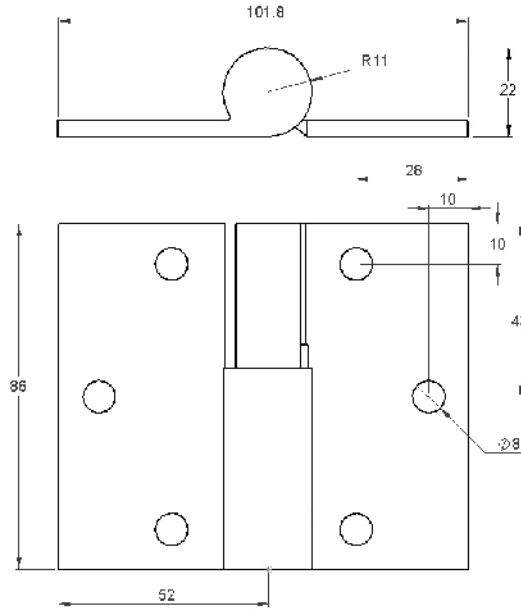
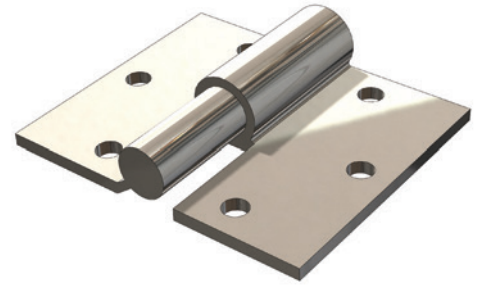
MATERIAL
Steel

FINISH
ZP

WEIGHT
980g

FEATURES
Left and right hand versions available

GHBO108ZP-LH Left hand
GHBO108ZP-RH Right hand



Double Butt Spring Hinge GHBO108SZP-LH, GHBO108SZP-RH

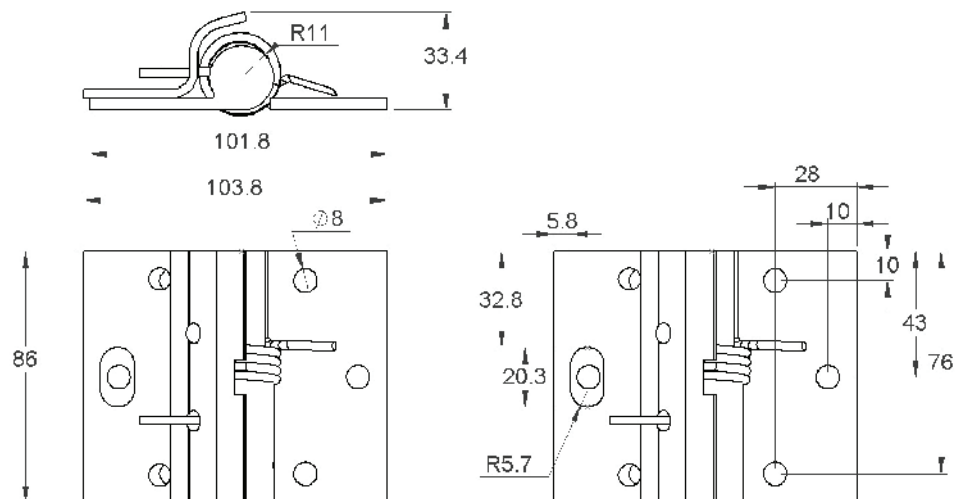
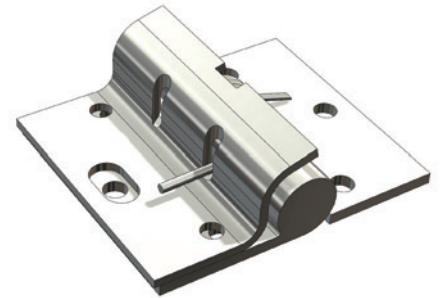
MATERIAL
Steel

FINISH
ZP

WEIGHT
980g

FEATURES
Left and right hand versions available

GHBO108SZP-LH Left hand
GHBO108SZP-RH Right hand



Heavy Duty Industrial Type Ball Bearing Hinge (Prison Hinge) GHWO121ZP-LH, GHWO121ZP-RH

MATERIAL

Steel

FINISH

ZP

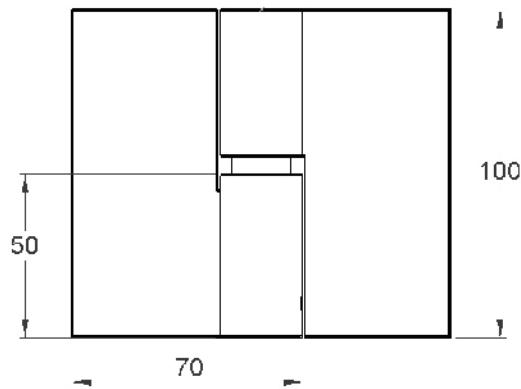
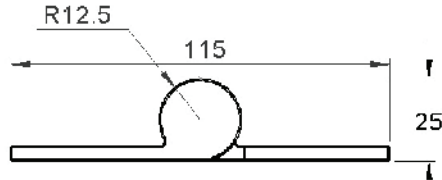
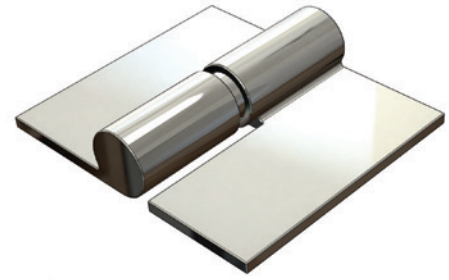
WEIGHT

1480g

FEATURES

Left and right hand versions available

GHWO121ZP-LH Left hand
GHWO121ZP-RH Right hand



Heavy Duty 365mm Strap Ball Bearing Hinge GHWO136ZP-LH, GHWO136ZP-RH

MATERIAL

Steel

FINISH

ZP

WEIGHT

4286g

FEATURES

Left and right hand versions available

GHWO136ZP-LH Left hand
GHWO136ZP-RH Right hand

