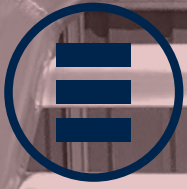


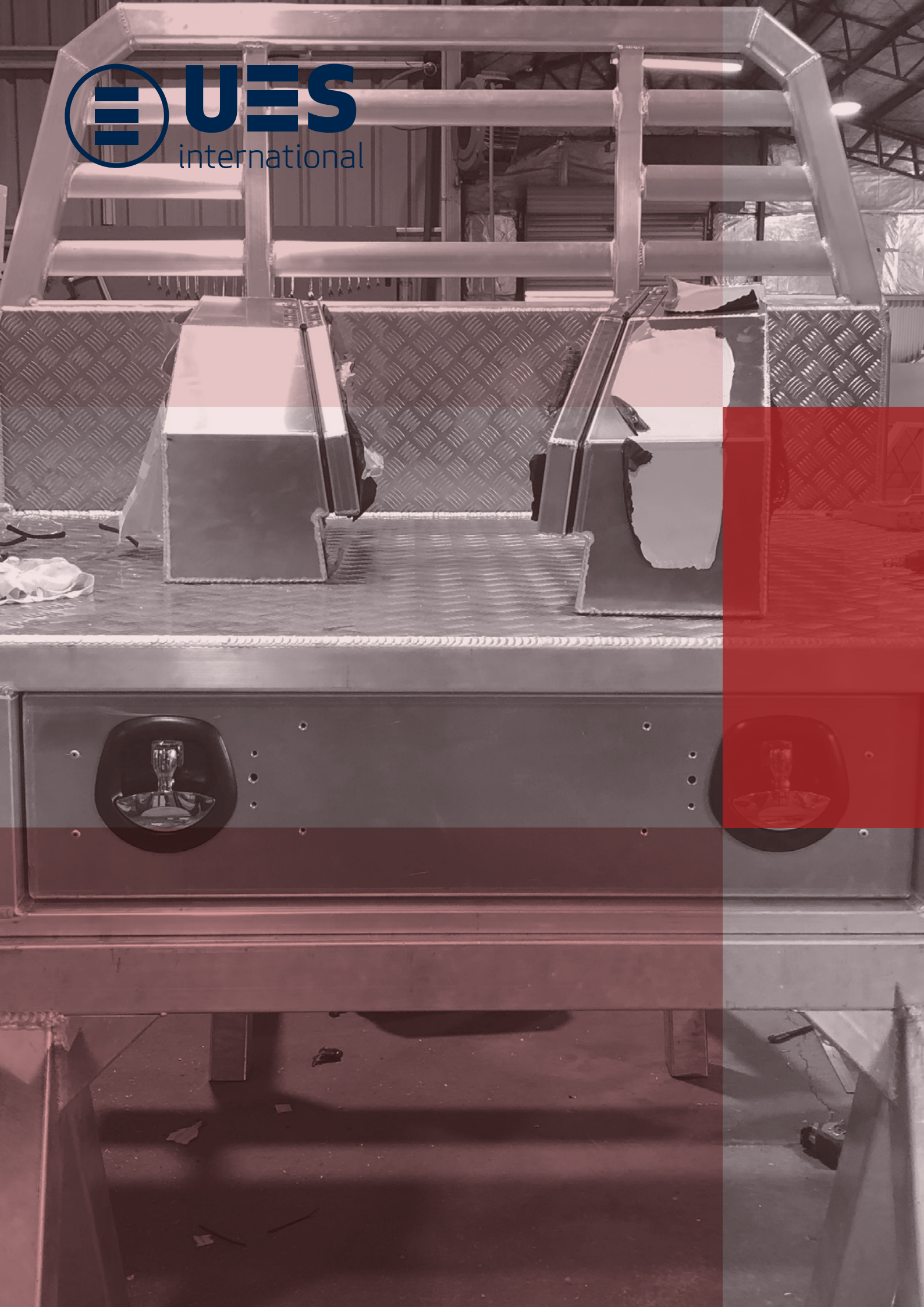


# Locks

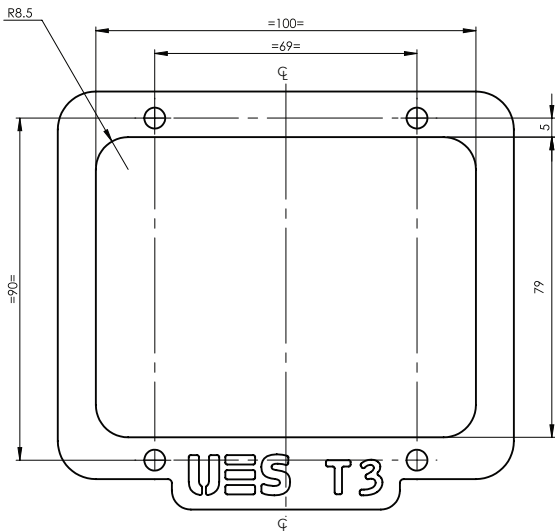
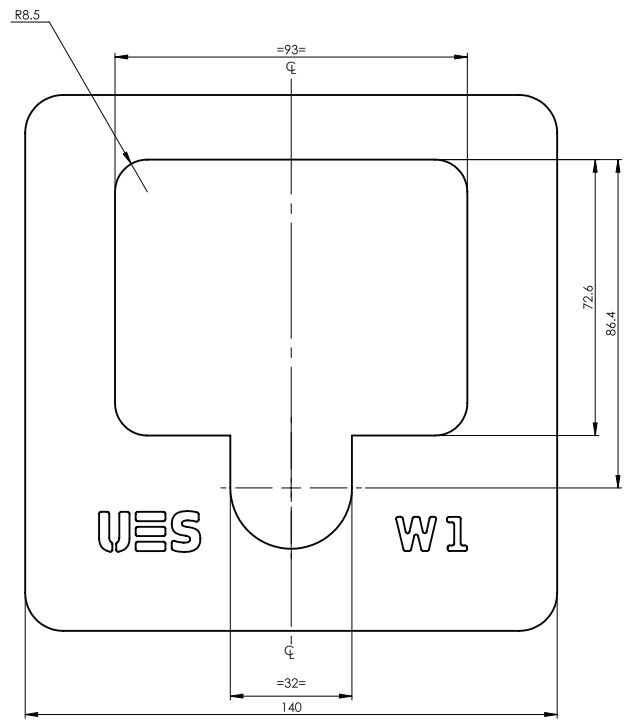
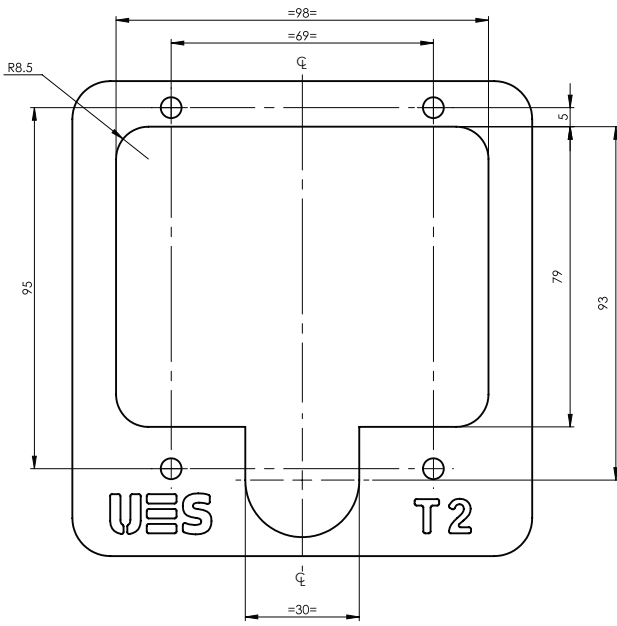
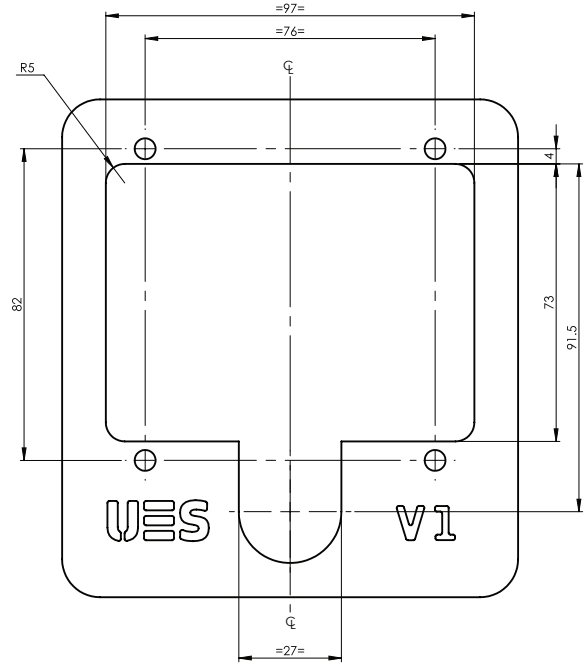
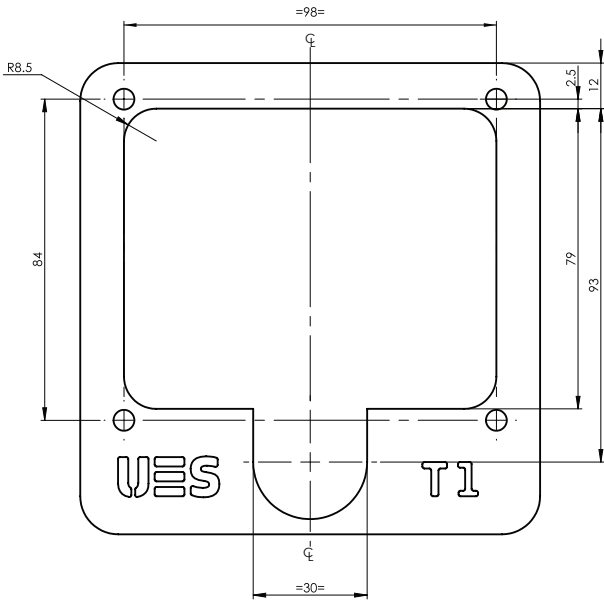




**UES**  
international



# Cut Out Templates - Drop T & Compression Locks T1, T2, T3, V1, W1



PRODUCT NUMBER	T1	T2	T3	V1	W1
DTWE140CP, DTWE140BC					X
DTW140CP, DTW140BC					X
DT120A		X			
DT120A-RF		X			
UES052049		X			
DT120L-LH		X			
9/01513		X			
DT120L-3W		X			
DT120-LH			X		
9/01515			X		
DT120L-8S		X			
DTP150	X				
91247-MX	X				
275024-06				X	
275063-68-S1				X	
275021-06-S1				X	
2751-10282-S1				X	

# UES

international

*Engineering Solutions*  
Since 1904

The best quality hardware and accessories for your camper trailer, caravan or 4x4 vehicle.

Visit your nearest UES showroom or find us at

**1300 00 1904**    [www.uesint.com](http://www.uesint.com)

Locks

Hinges

Latches

Rubber & Seals

Gas Struts

Drawer Slides

Water Tanks

# Whale Tail Compression Lock W/ Electronic Actuator DTWE140CP, DTWE140BC, DTWE140BL

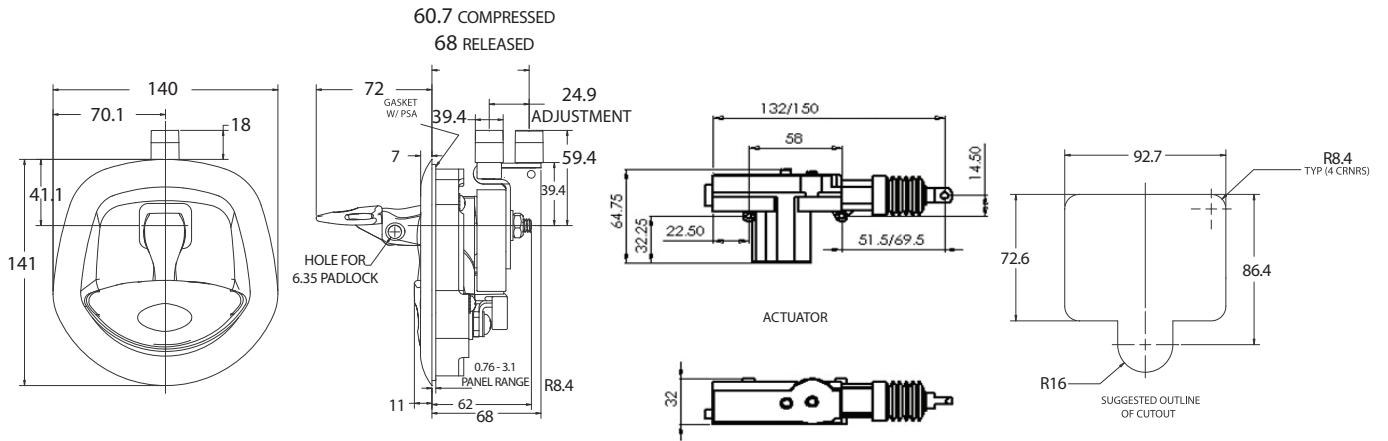
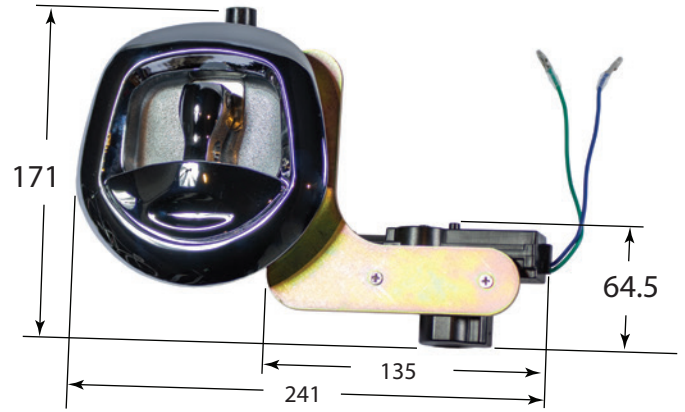
**MATERIAL**

Cast Steel

**FINISH**

- DTWE140CP - Chrome Plated
- DTWE140BC - Black & Chrome
- DTWE140BL - Black Powder Coated

Cut out template: W1



# Whale Tail Compression Lock DTW140CP, DTW140BC, DTW140BL

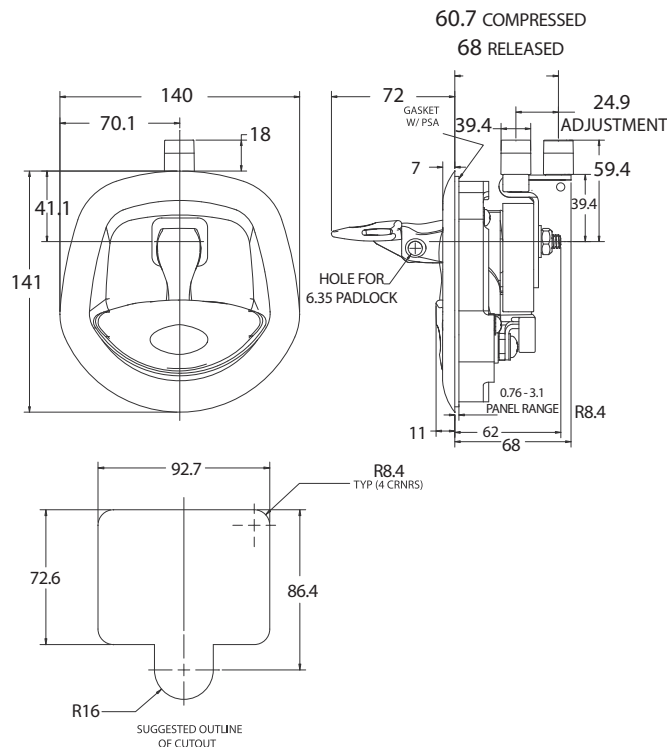
**MATERIAL**

Cast Steel

**FINISH**

- DTW140CP - Chrome Plated
- DTW140BC - Black and Chrome
- DTW140BL - Black Powder Coated

Cutout Template: W1



# Drop T Lock with Bent Tongue DT120A, DT120A-RF

**MATERIAL**

Stainless Steel

**FINISH**

Polished

**FEATURES**

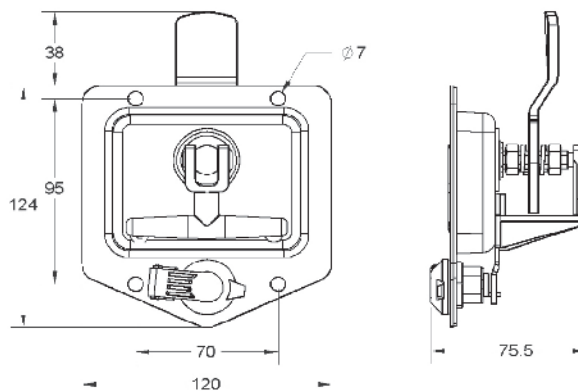
**DT120A**

Keyed alike.

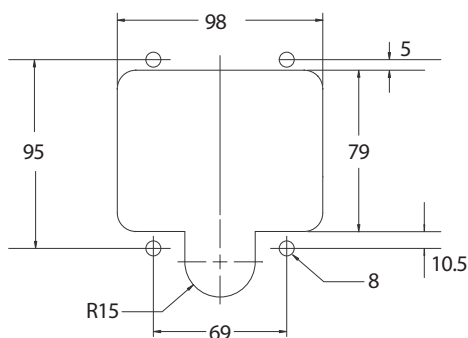
**DT120A-RF**

Keyed alike, concealed fixing.

Cutout Template: T2



SUGGESTED OUTLINE OF CUTOUT



# Drop T Lock with Bent Tongue DT120L-LH

**MATERIAL**

Stainless Steel

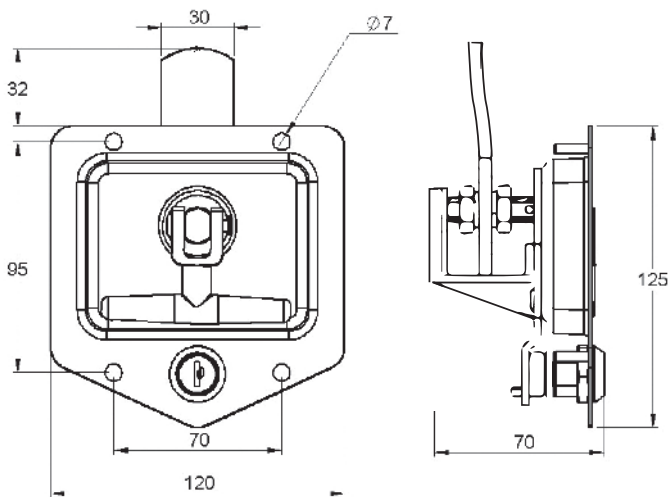
**FINISH**

Polished

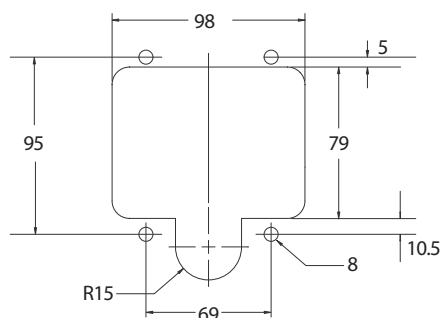
**FEATURES**

LH K/A FS880

Cut out template - T2



SUGGESTED OUTLINE OF CUTOUT



# Drop T Lock 3 Way with Straight Tongue DT120L-3W

## MATERIAL

Stainless Steel handle  
Steel rod and guide

## FINISH

Polished

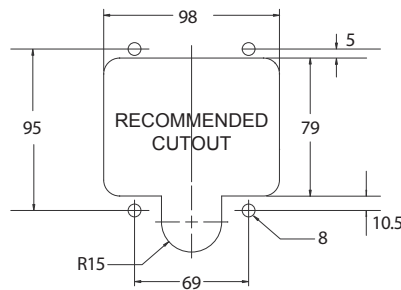
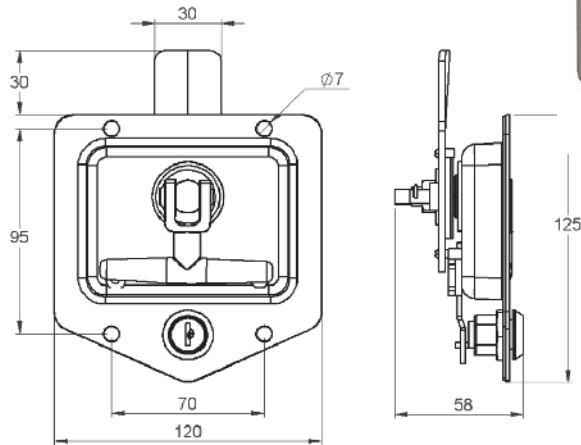
## FEATURES

Complete system, supplied with rods and guides. Assembled on site.

### Can be purchased separately:

RL1145ZP - Spare rod 1050mm long  
RLG - Spare guide

Cut out template - T2



# Drop T Lock - Non-Locking with Bent Tongue DT120-LH

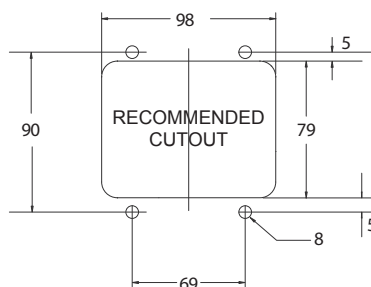
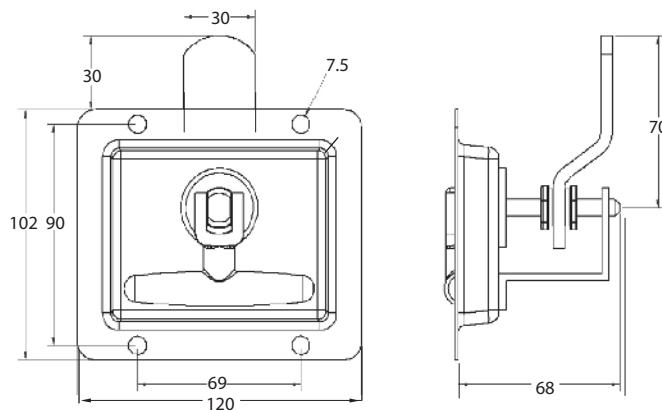
## MATERIAL

Stainless Steel

## FINISH

Polished

Cut out template - T3



## Drop T Lock with 8mm Square Shaft DT120L-8S

### MATERIAL

Stainless Steel

### FINISH

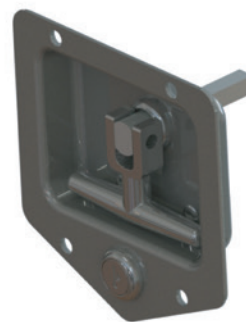
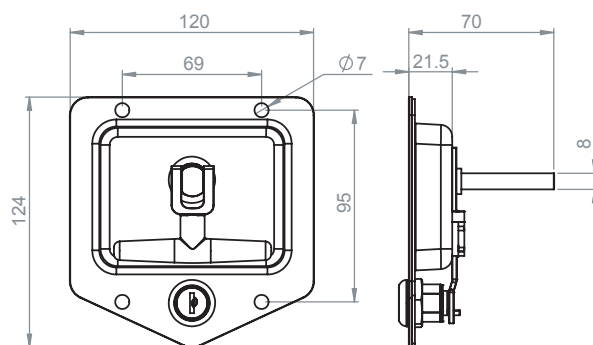
Polished

### FEATURES

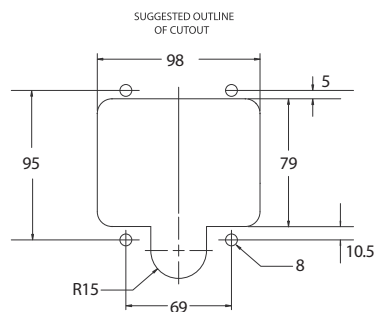
8mm square shaft to suit.

Locking.

Keyed FS880



Cut out template - T2



## Drop T Lock with Straight Tongue DT120L

### MATERIAL

Stainless Steel

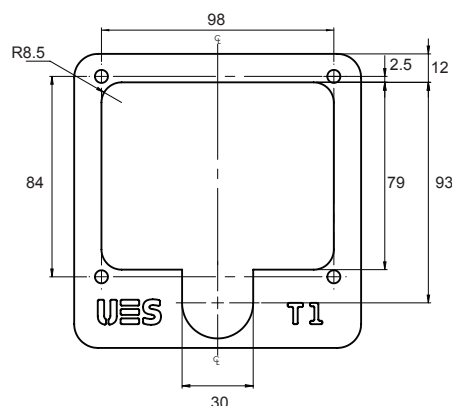
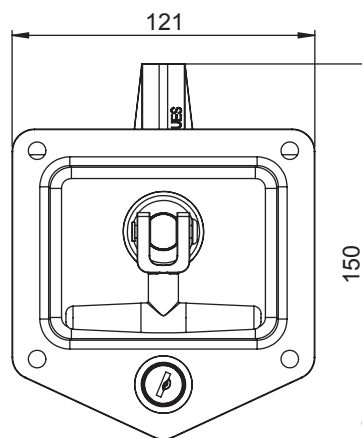
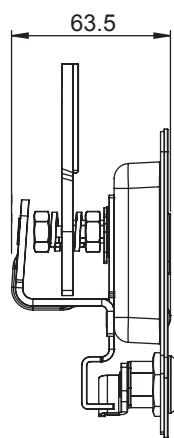
### FINISH

Polished

### FEATURES

Stainless steel fascia

Cut out template - T1





## Vector Compression T-Handles 3 Way

### 275024-06

#### MATERIAL

High impact BKV 133 plastic latching housing  
With Steel Zinc Plated Handle

#### FINISH

Black Powder Coated

#### FEATURES

Stainless steel spring loaded padlock eye.

Compression mechanism supported by roller bearing for smooth actuation.

Grip Range of 10mm - 60mm

90° rotation.

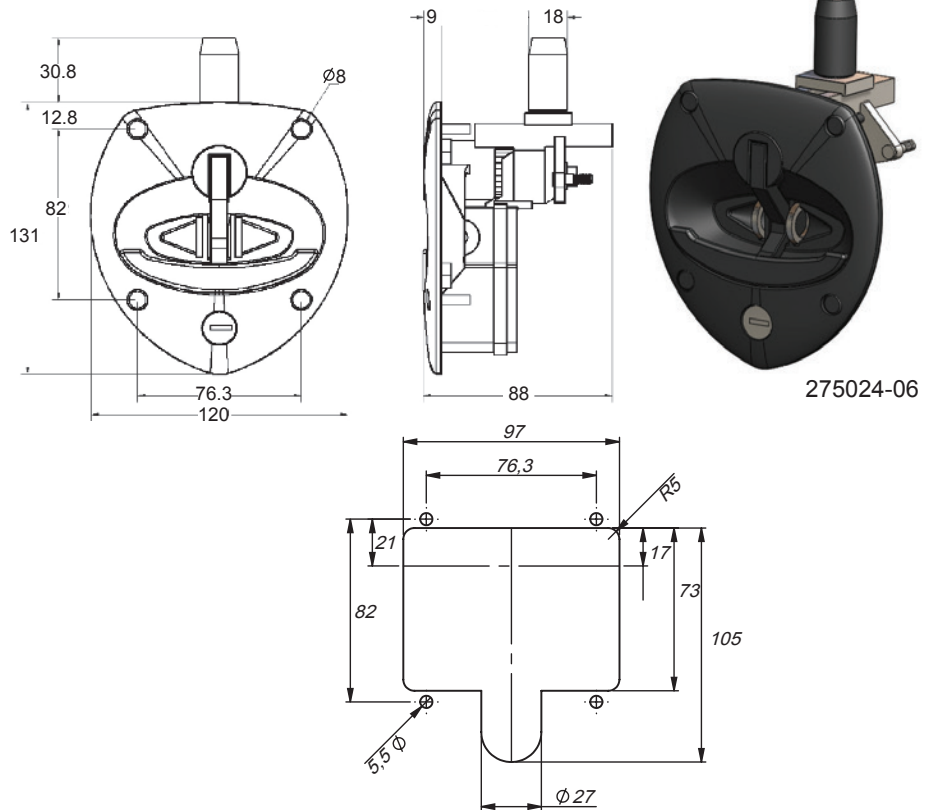
Handle will not lift when cylinder is locked.

Gasket Seal Included.

Use with 282109 Rods, 285023 Guide, and 282109 Adaptor.

2Nm Pressure required to fit nuts onto studs  
No tool required.

Cut out template - V1



## Vector Compression T-Handles Rear Fixing

### 275063-68-S1

#### MATERIAL

High impact BKV 133 plastic latching housing  
With Steel Zinc Plated Handle

#### FINISH

Black Powder Coated

#### FEATURES

IP65 Rated

Stainless steel spring loaded padlock eye.

Compression mechanism supported by roller bearing for smooth actuation.

Grip Range of 10mm - 60mm

180° rotation.

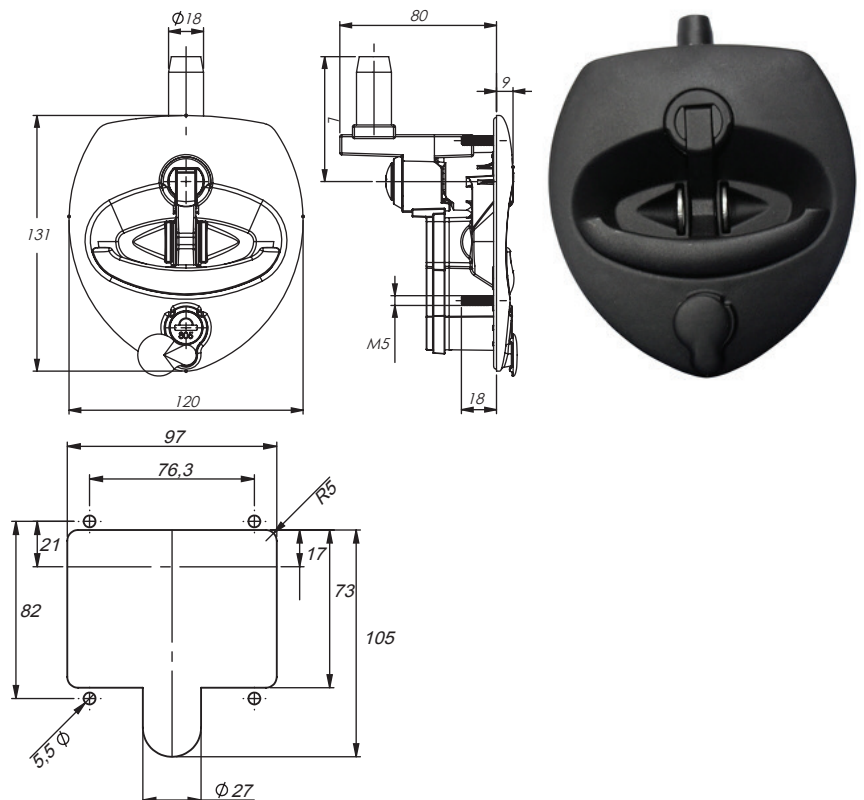
Handle will not lift when cylinder is locked.

Integrated PUR seal.

2Nm Pressure required to fit nuts onto studs  
No tool required.

Dust shutter over cylinder

Cut out template - V1



## Vector Compression T-Handles Front Fixing

### 275021-06-S1

#### MATERIAL

High impact BKV 133 plastic latching housing  
With Steel Zinc Plated Handle

#### FINISH

Black Powder Coated

#### FEATURES

Stainless steel spring loaded padlock eye.

Compression mechanism supported by roller bearing for smooth actuation.

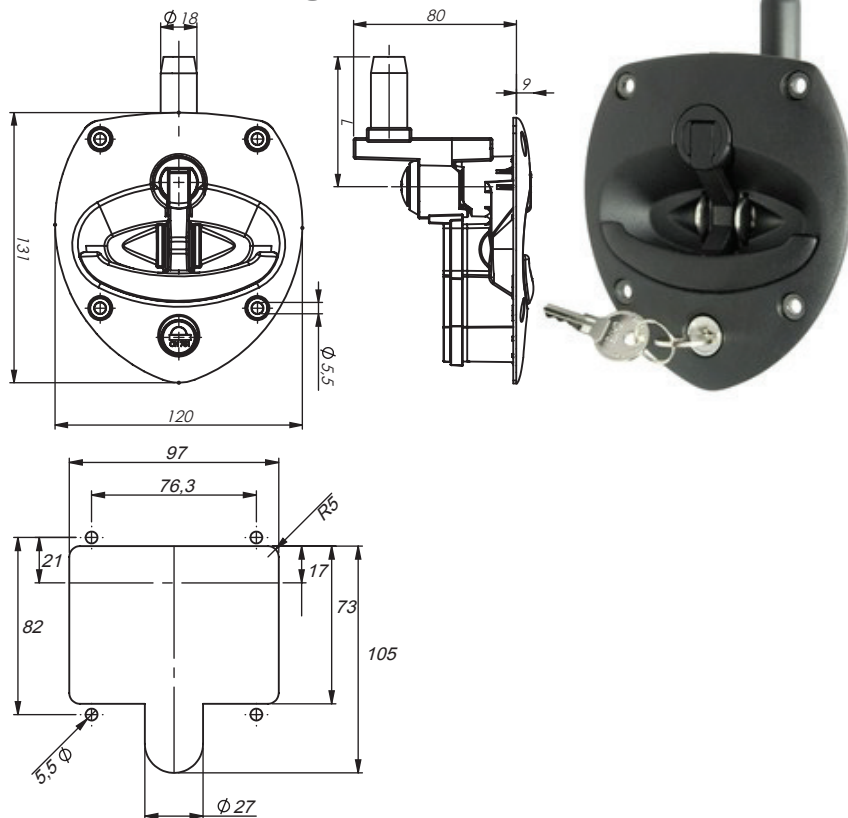
Grip Range of 10mm - 60mm

180° rotation.

Handle will not lift when cylinder is locked.

Gasket Seal included

Cut out template - V1



## Vector Compression T-Handles With Mounting Bracket

### 2751-10282-S1

#### MATERIAL

High impact BKV 133 plastic latching housing  
With Steel Zinc Plated Handle

#### FINISH

Handle Chrome Plated

#### FEATURES

IP65 Rated

Compression mechanism supported by roller bearing for smooth actuation.

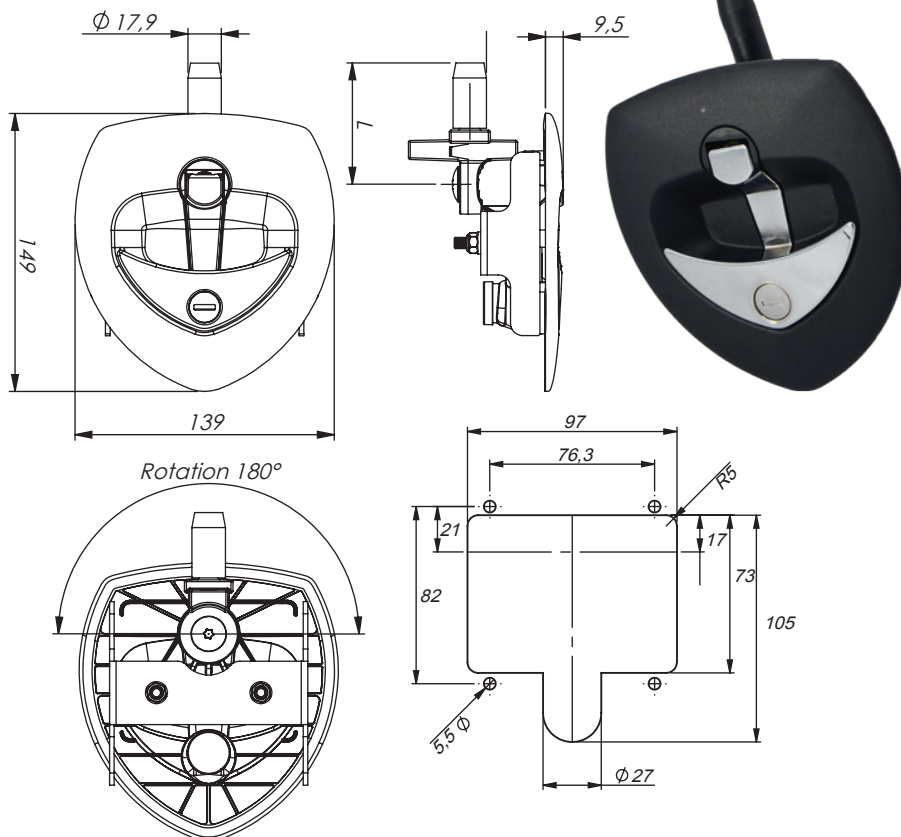
Grip Range of 17mm - 52mm.

180° rotation.

Integrated PUR Seal.

Mounting Bracket Included.

Cut out template - V1



# Push To Close Latch Chrome Plated PTC88L

**MATERIAL**

Zinc Alloy

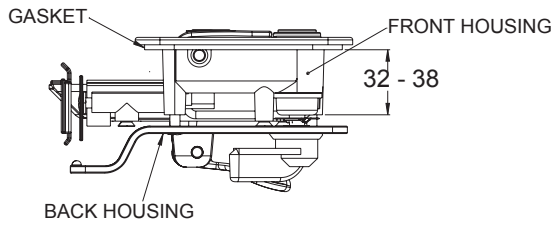
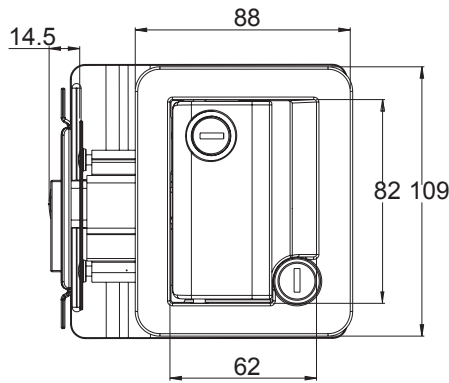
**FINISH**

Chrome Plated

**FEATURES**

Internal locking and release deadbolt action.

Each lock set includes 2 overmoulded keys (CF301) and all mounting screws except striker plate screws.



# Push to Close Latch Black P/C 15605-01, 29790-04

**MATERIAL**

Die Cast Zinc Alloy

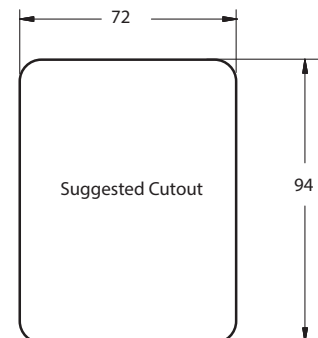
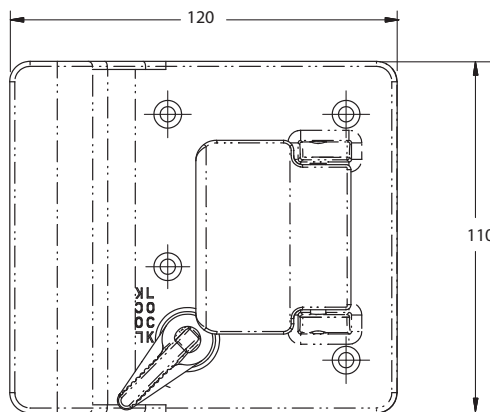
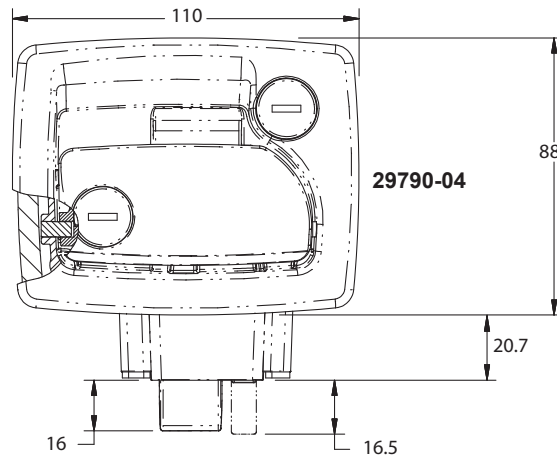
**FINISH**

Black Powder Coated

**FEATURES**

Internal Locking and Release using dead bolt action

29790-04 - External Handle  
15605-01 - Internal Handle



15605-01

# Motor Home Entrance Lock

## 29412-07, 31073-05

### MATERIAL

Die Cast Zinc Alloy

### FINISH

Black Powder Coated

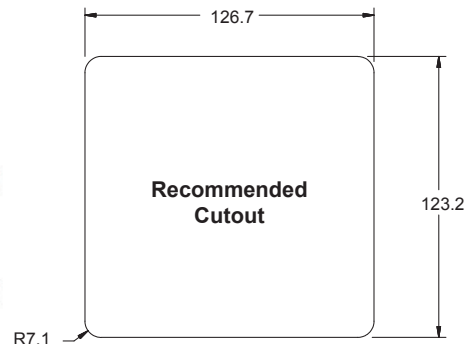
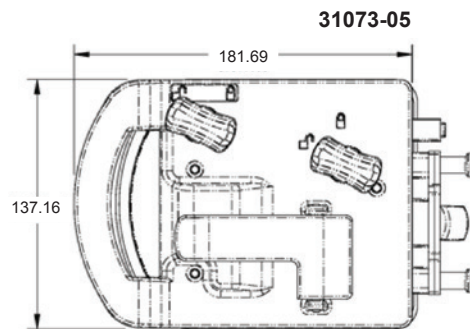
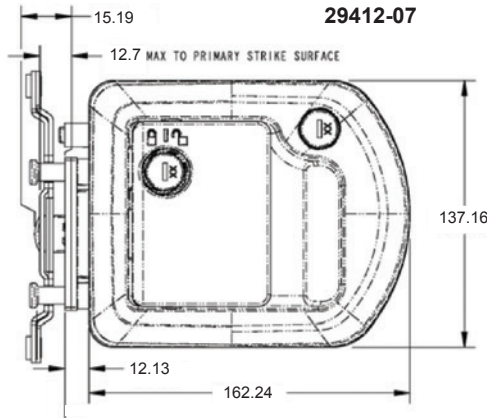
### FEATURES

Internal Locking and Release using dead bolt action

29412-07 - External Handle  
31073-05 - Internal Handle

Handle can be locked before door is closed

Can be used with  
Central Locking Kit 22316-01  
or Actuator 36517-01



# Two Way Paddle Lock

## 20599-09

### MATERIAL

Die Cast Zinc Alloy

### FINISH

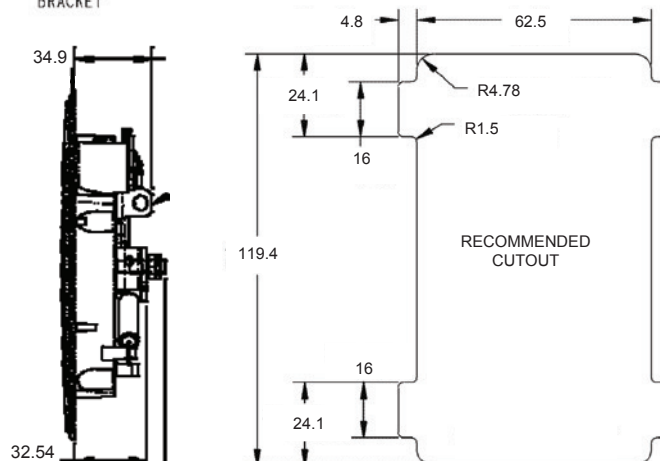
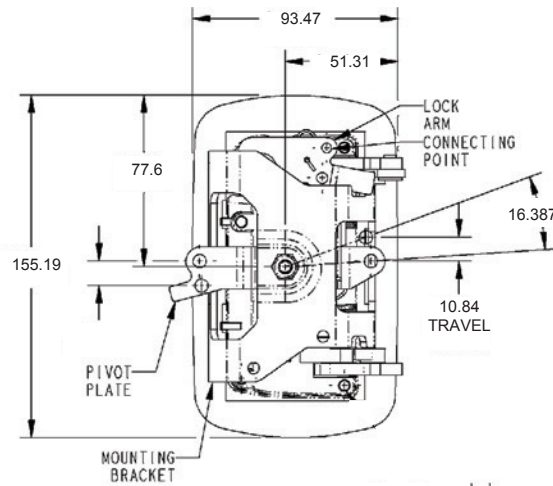
Black Powder Coated

### FEATURES

Can be used with  
Central Locking Kit 22316-01  
or Actuator 36517-01

Suitable for use with  
Rotary Locks 18610-01, 18611-01  
and Pin SP44

This lock is ideal for any application where central locking is required  
Examples include:  
- Canopies  
- Toolboxes  
- Storage lockers



## Three Way Paddle Lock

### 19583-08

#### MATERIAL

Die Cast Zinc Alloy

#### FINISH

Black Powder Coated

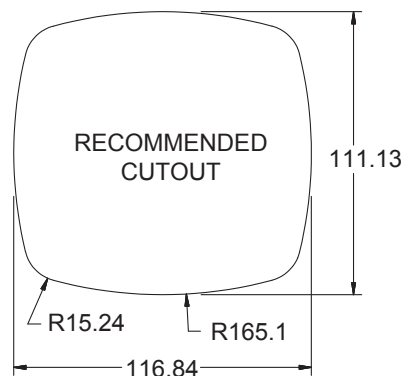
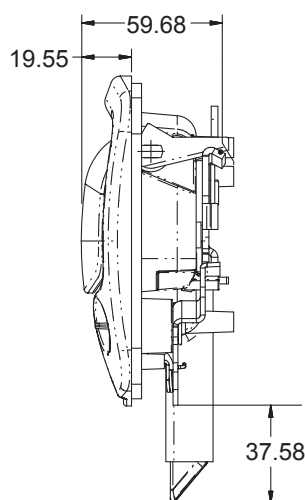
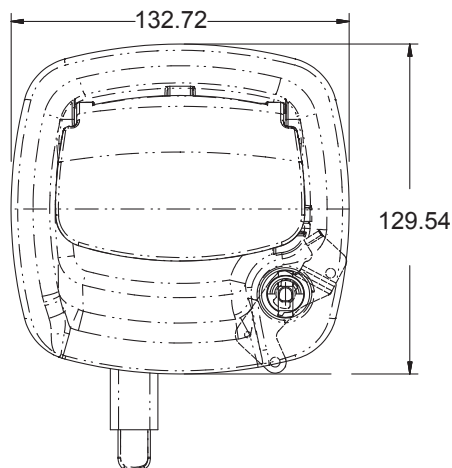
#### FEATURES

Can be used with  
Central Locking Kit 22316-01  
or Actuator 36517-01

Suitable for use with  
Rotary Locks 18610-01, 18611-01  
and Pin 11111-16

This lock is ideal for any application  
where central locking is required  
Examples include:  
Undertray Toolboxes  
Storage lockers

Mounting Bracket not included  
Suits Mounting Bracket 20503-01



## Recessed Paddle Lock With Rotary Latch

### 16268-13, 81348, 10335-16

#### MATERIAL

Stainless Steel

#### FINISH

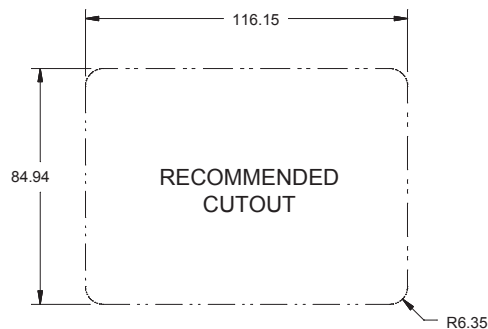
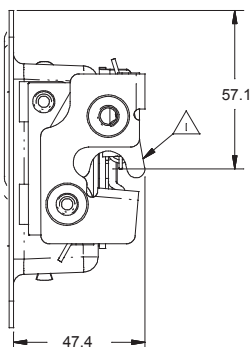
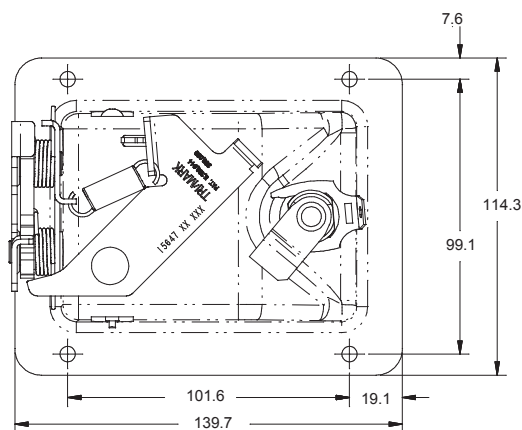
Raw

#### FEATURES

The two step rotary latch provides  
positive slam action and  
anti-burst protection.  
This prevents accidental  
opening through  
vibration or impact.

16268-13: Paddle Lock  
81348: Seal  
10335-16: Pin to Suit

Items Sold Separately



# Electronic Control Unit for Central Locking

## 22316-01

This electronic system consists of compatible components that allow for keyless entry for on or off road equipment.

This system is perfect for any vehicle that doesn't currently have central locking capabilities.

This unit comes with 22311-01 FOB as standard. 22316-01 unit will operate up to 60 control FOBs (remotes) and up to 20 door locks.

4 signals are emitted from each control FOB. Examples of use could be:

- 1) Lock all
- 2) Unlock all
- 3) Operate Zone A or Lighting
- 4) Operate Zone B or Generator etc.

Installation instructions available upon request



22316-01



### FEATURES

- Increased end user convenience
- Easy and intuitive to operate
- Increased vehicle security
- Lighting and auxillary output control
- Complete kit with wire harnesses and accessories
- Standard 12V power

### Use with:

- 36157-01 Actuator
- 19583-08 Lock
- 22676-10 Lock
- 29412-07 / 31703-05 Complete Lock
- 29790-04 / 15605-01 Complete Lock

# Electronic Lock Actuator

## 36517-01

### MATERIAL

High Impact Plastic

### FINISH

Black

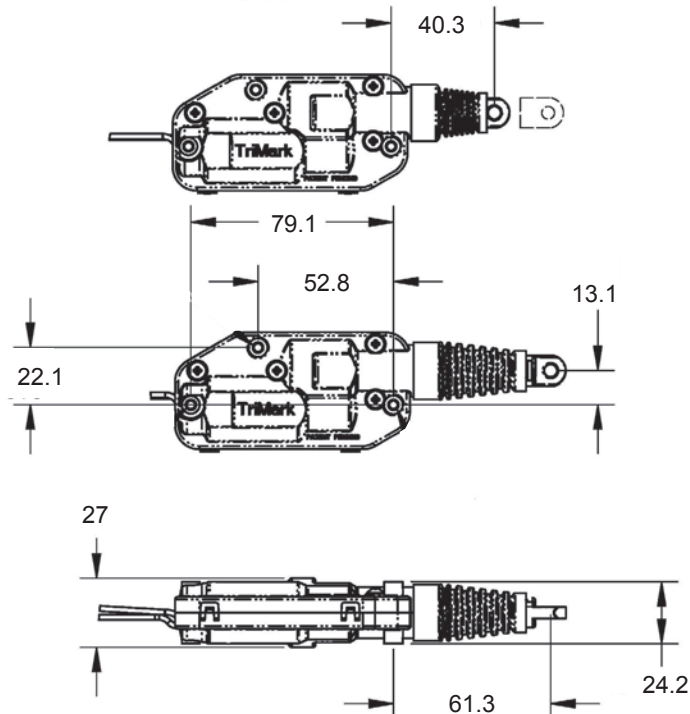
### FEATURES

Electronic actuator for use on locks and handles to create central locking for the user

12V supply, drawing up to 4.0 amps.

Motor is equipped with a 12V thermal protection for excessive heating due to extreme usage such as rapid, frequent operations or sustained activation.

Wire length = 184mm



# Flush Paddle Latch

## PL120L-ZP, PL120L-SS

### MATERIAL

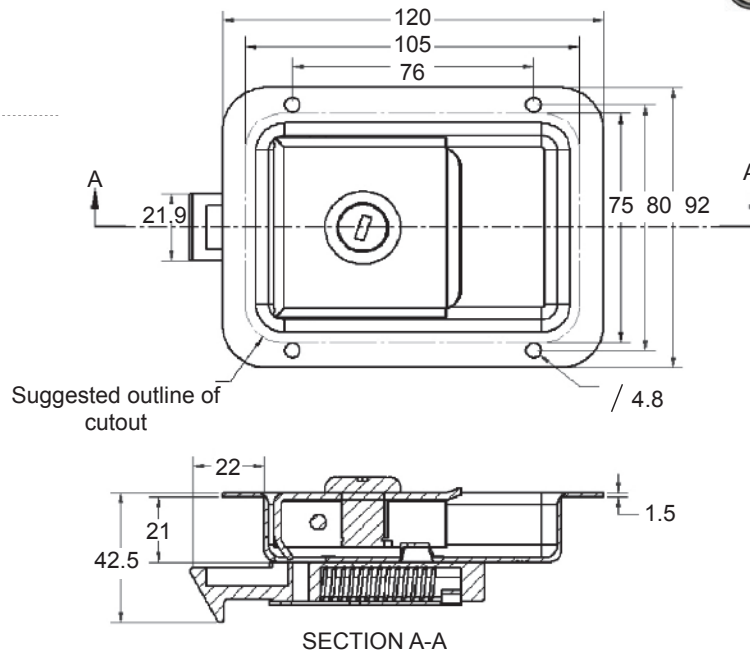
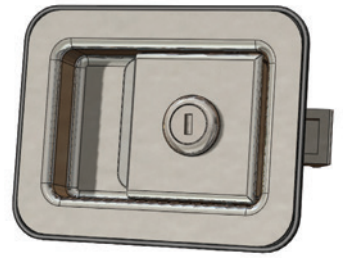
Stainless Steel - PL120L-SS  
 Steel - PL120L-ZP

### FINISH

Zinc Plated - PL120L-ZP  
 Polished - PL120L-SS

### FEATURES

C/W Gasket  
 PL120L-SS, PL120L-ZP  
 Locking



# Flush Paddle Latch - Weatherproof

## PL140, SL55-SS

### MATERIAL

Steel / Acetal Copolymer

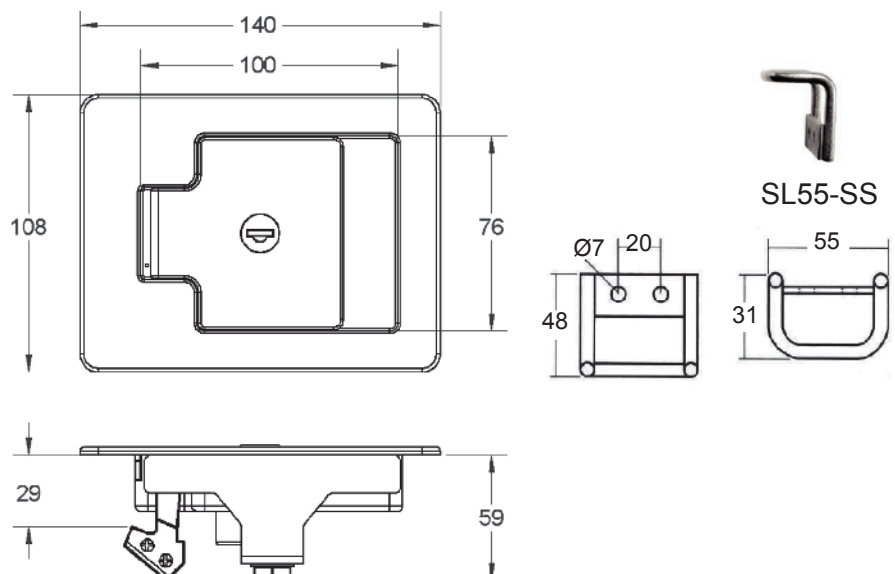
### FINISH

Black

### FEATURES

SL55-SS - SS striker plate sold separately

The traditional paddle handle has been completely redesigned to make major improvements in function and specification. This new model will not corrode, will resist entry of water and is quickly installed without visible bolts or rivets.



## Recessed Paddle w/ Rotor Latch

### 9-00492, 9-00426 (Striker Pin)

**MATERIAL**

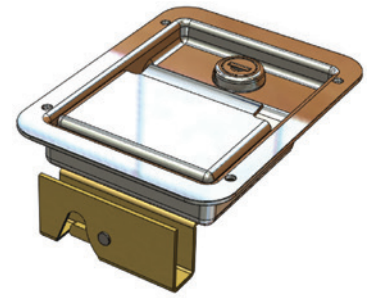
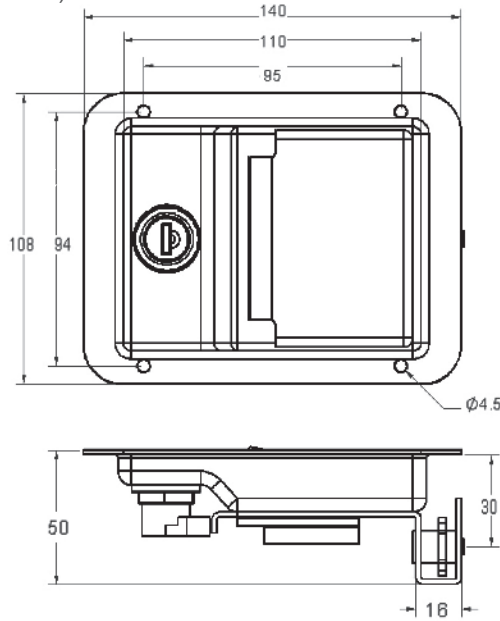
9-00492 Stainless Steel  
9-00426 Steel

**FINISH**

9-00492 Polished  
9-00426 ZP

**FEATURES**

2 Stage Rotary Lock



## Recessed Paddle Latch PL140H-SS, SL55-SS

**MATERIAL**

Stainless Steel

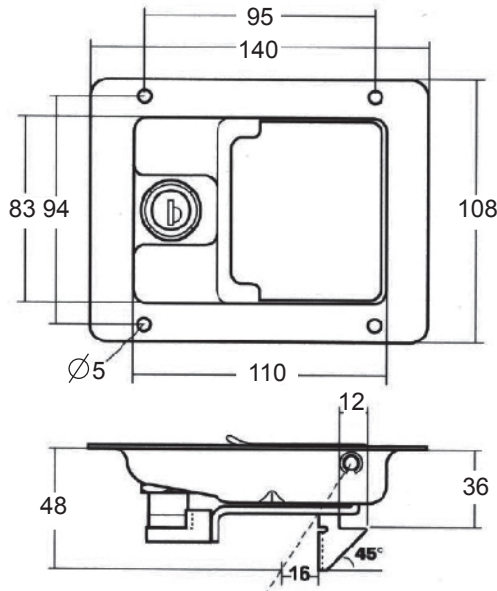
**FINISH**

PL140H-SS - Polished  
SL55-SS - Raw

**FEATURES**

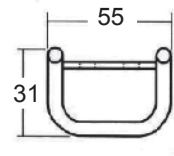
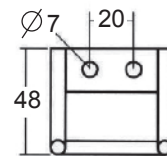
PL140H-SS - Locking  
SL55-SS - Loop Striker

Blind-mounting models have four studs (M6x10mm) welded on inside rim. Striker made in 6mm diameter stainless rod, welded to stainless back plate.

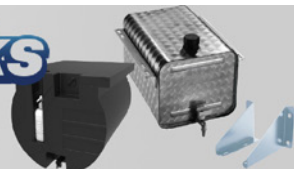


PL140H-SS

SL55-SS



**Water Tanks  
Specials**



Call us  
**1300 00 1904**  
for further information



# Flush Paddle Locks

## PL140-SS, PL140L-SS

**MATERIAL**

Stainless Steel

**FINISH**

Raw

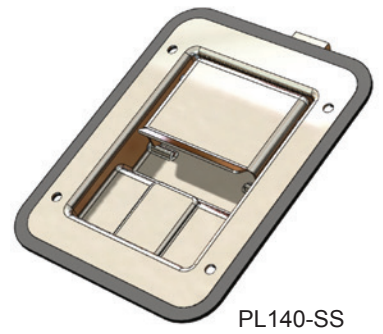
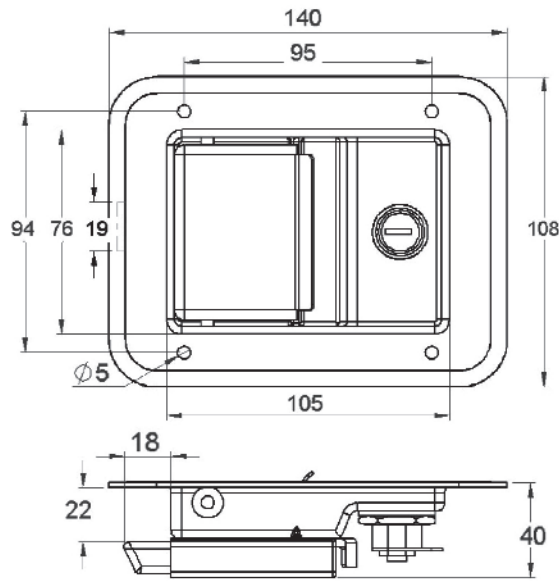
**FEATURES**

**PL140-SS**

Non-locking

**PL140L-SS**

Keyed alike. Keyed FS 880



PL140-SS

PL140L-SS

## Flush Paddle Lock - Key Locking K/A

### PL82L

**MATERIAL**

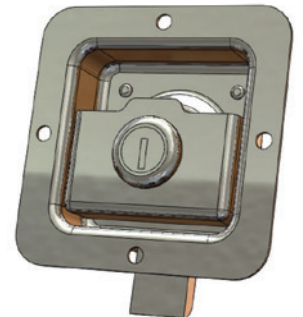
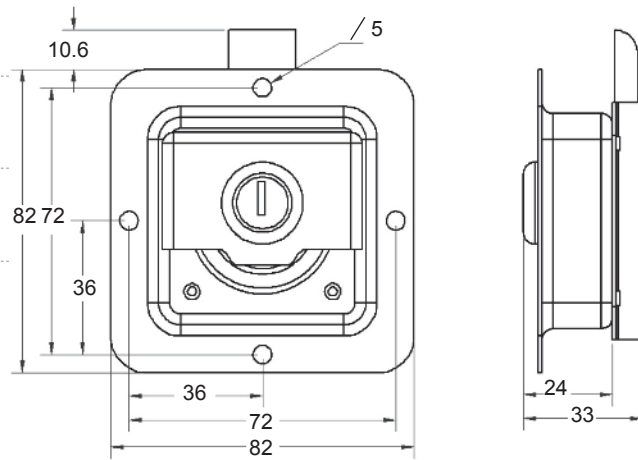
Stainless Steel

**FINISH**

Polished

**WEIGHT**

266g



## Flush Paddle Lock with Hook Cam

### PL112L

**MATERIAL**

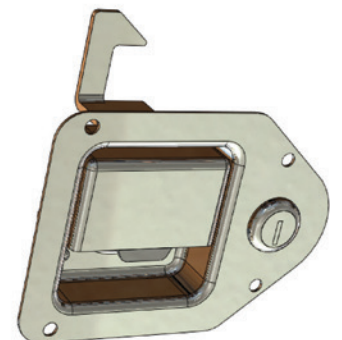
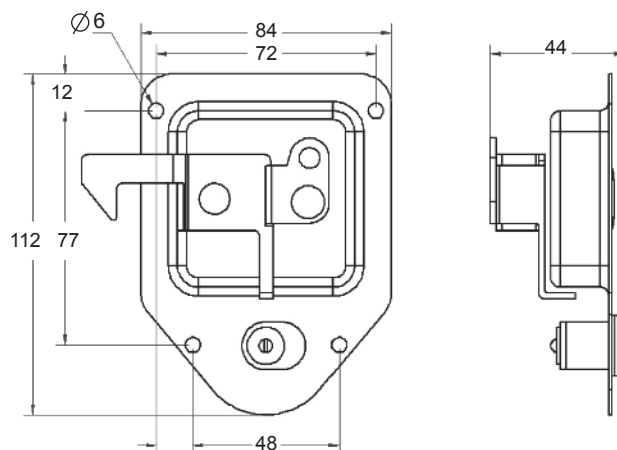
Stainless Steel

**FINISH**

Polished

**WEIGHT**

220g



## Flush Paddle Lock PL140L-INT-BL

### MATERIAL

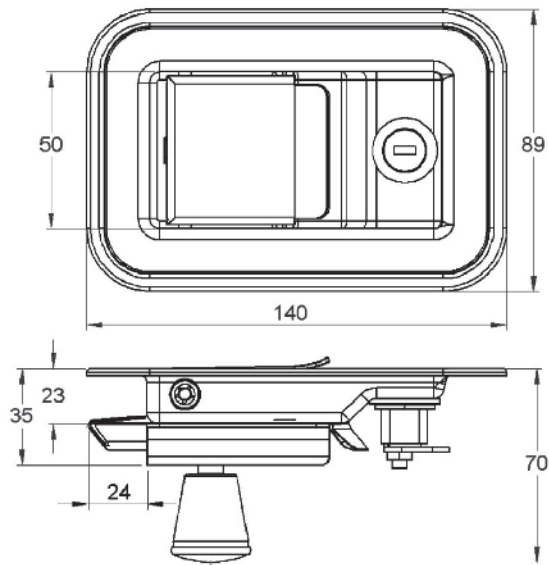
Stainless Steel

### FINISH

Black / SS Paddle

### FEATURES

- Interior Release
- Keyed in Pairs



## Flush Paddle Lock PL140-SS, PL140LRK-SS, PL140L-SS

### MATERIAL

Stainless Steel

### FINISH

Polished

### FEATURES

#### PL140-SS

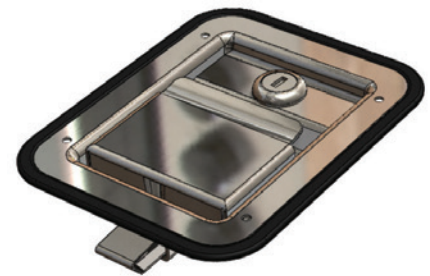
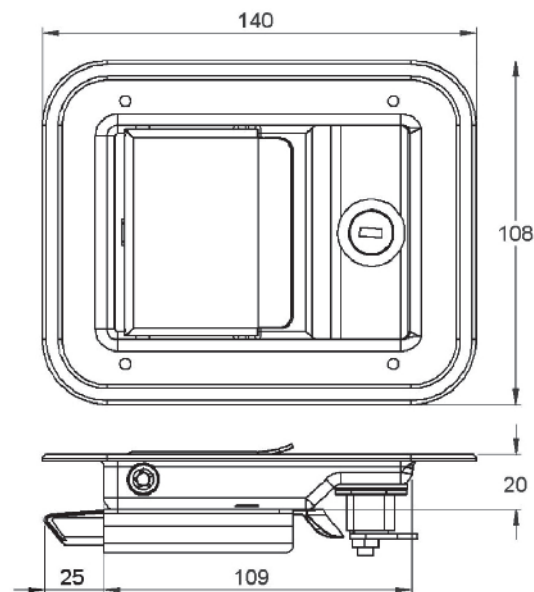
Non-locking no interior release  
Weight: 410g

#### PL140LRK-SS

Locking no interior release  
Weight: 470g

#### PL140L-SS

Locking no interior release  
All keys to pass  
Weight: 470g



PL140LRK-SS

# Coach Bin Door Lock

**MATERIAL**

Steel

**FINISH**

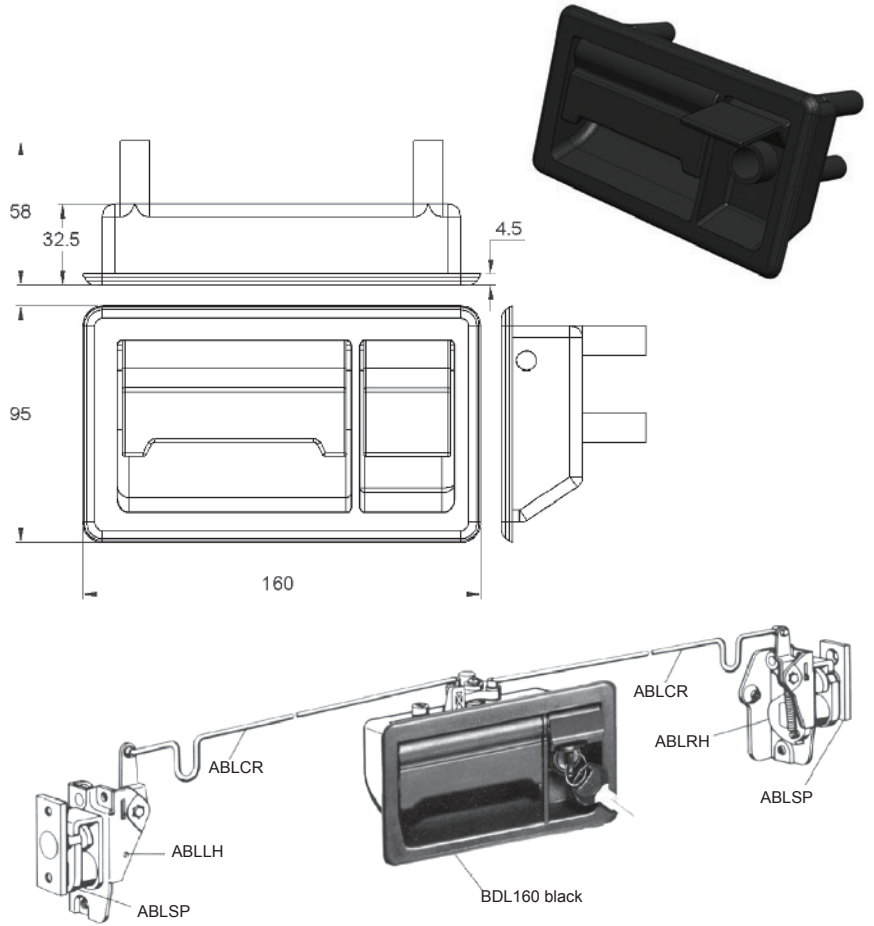
BDLCYL - Chrome finish  
 BDLK - Black plastic head  
 All other - Zinc Plated

**FEATURES**

BDL160 - Coach bin lock complete assembly.  
 BDLCYL - Lock cylinder  
 BDLK - Lock key

Other components to be ordered seperately:

- ABLLH - Anti burst lock LH
- ABLRH - Anti burst lock RH
- ABLSP - Lock striker pin
- ABLKR - Lock connecting rod



**UES**  
international

ESTD 1904

## Side Underrun Protective Devices for All Makes of Trucks

Side Underrun Protective Devices prevent cars, motorcycles and pedestrians from entering under the sides of a trailer and being run over by the wheels.

# Get the Best SUP for Your Truck

**Reduce Fuel Consumption**

Through the use of side underrun production devices, it may improve the aerodynamic performance of heavy vehicles and potentially reducing fuel consumption.

TEL(AUS): 1300 00 1904

TEL(NZ): +64 (0)9 633 4019

[www.uesint.com](http://www.uesint.com)

[info@uesint.com](mailto:info@uesint.com)

Sydney • Brisbane • Melbourne • Perth • Adelaide • Darwin • Nowra • Auckland

# Two Stage Rotary latches

## 18610-01, 18611-01

### MATERIAL

Casing: High Strength Steel  
 Springs: Non Corrosive Stainless Steel

### FINISH

Casing: Zinc Plated  
 Springs: Raw

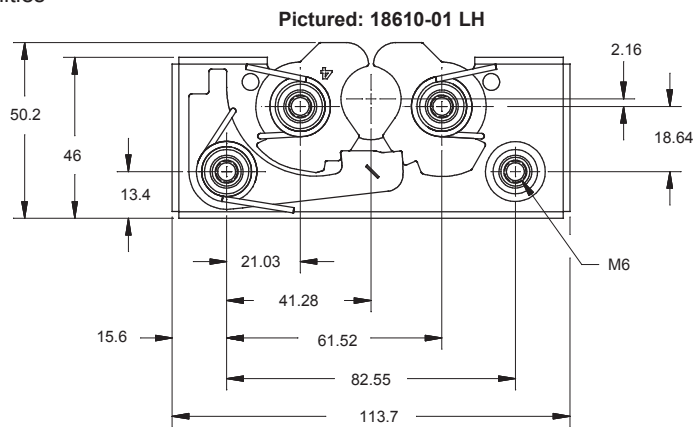
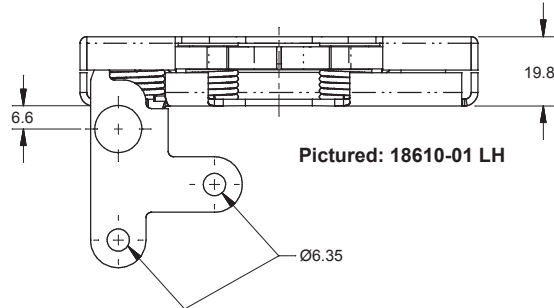
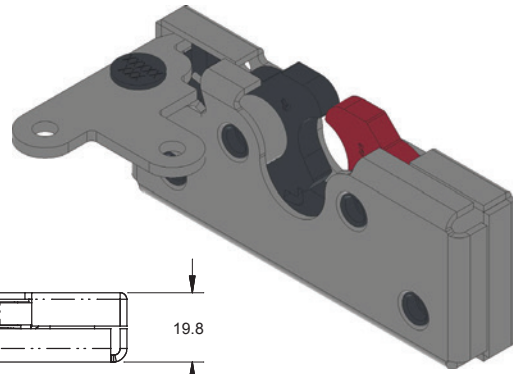
### FEATURES

18610-01: Left Hand  
 18611-01: Right Hand

Two Stage Rotary latches  
 Used with pin SP44

These latches can be used with any lock that has 2 or 3 way latching capabilities

These latches are suitable for doors up to 91kgs



# Striker Pin

## SP44

### MATERIAL

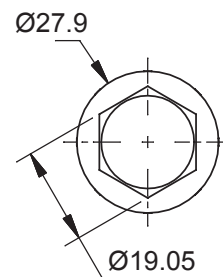
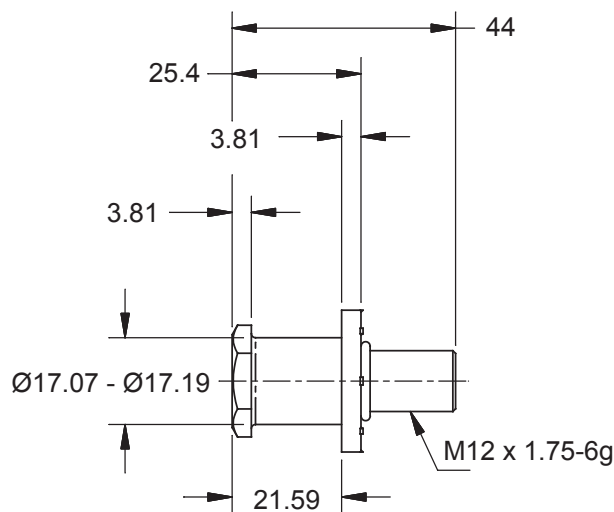
Steel

### FINISH

Zinc Plated

### FEATURES

Use with Rotary Latches  
 18610-01: Left Hand  
 18611-01: Right Hand



# Rotor Latches

## RL92LH, RL92RH

**MATERIAL**

Steel

**FINISH**

ZP

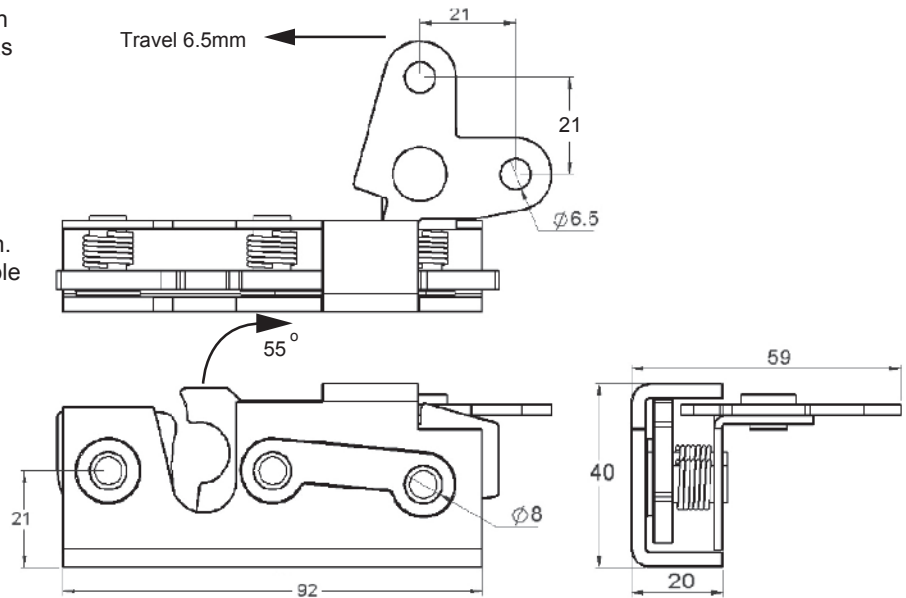
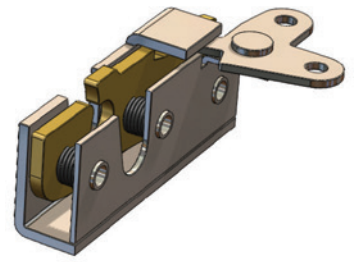
**FEATURES**

Slam-action against striker pin, both 'hands' available. Claw engages pin with 2-stage action, and is released by pull as shown on 2-lobe actuator arm. Clear zinc-plated throughout.

**Anti-Burst Properties**

When ring-tested, these latches can achieve values in excess of 8-9 KN\* transverse load in fully latched condition. However, vehicle builders are responsible for evaluating performance in their own particular application and for ensuring that appropriate legislation is satisfied.

\*SAE & ECE11 Specification



# Rotor Latch Striker Pin

## SP26

**MATERIAL**

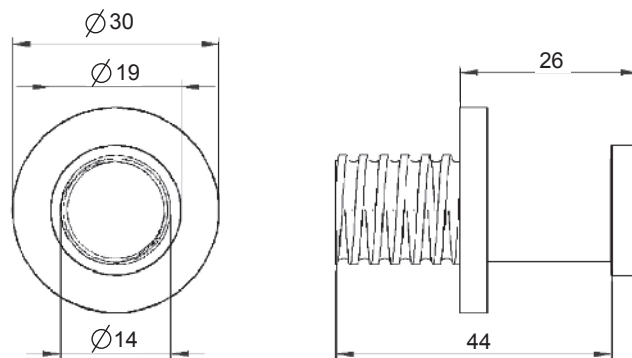
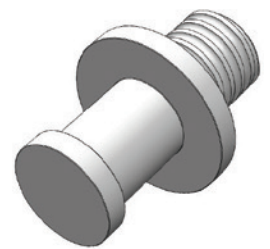
Steel

**FINISH**

ZP

**FEATURES**

Striker pin head 8mm x 4mm deep thread form 14 UNC Class 2A Not handed.



# Lift & Turn Latches

## LTL86 , LTL86L

### MATERIAL

Zinc Alloy

### FINISH

Black Powder Coated

### FEATURES

LTL86 : Non Locking

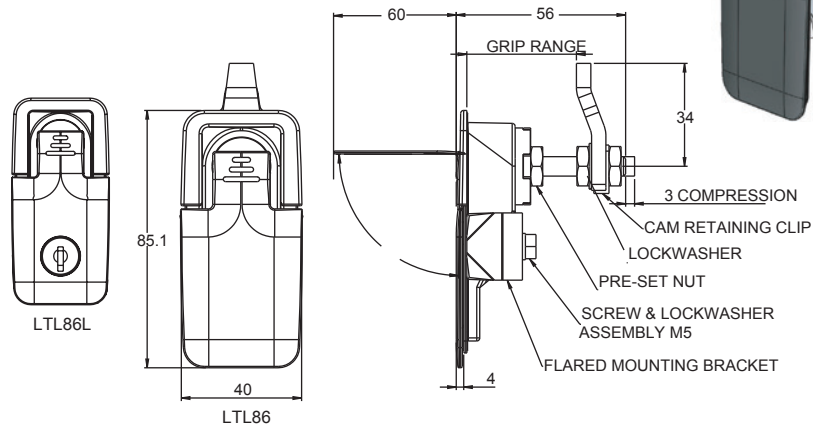
LTL86L: Locking

Environmental sealing is achieved by using a cup gasket and sealing the mounting screw threads.

Screw and lockwasher assembly M5 x 16. For door thickness greater than 6 calculate screw length using the following formula:

Door thickness +10

Two flat keys provided.



# Large Compression Lock

## CL109CP, CL109BL

### MATERIAL

Steel

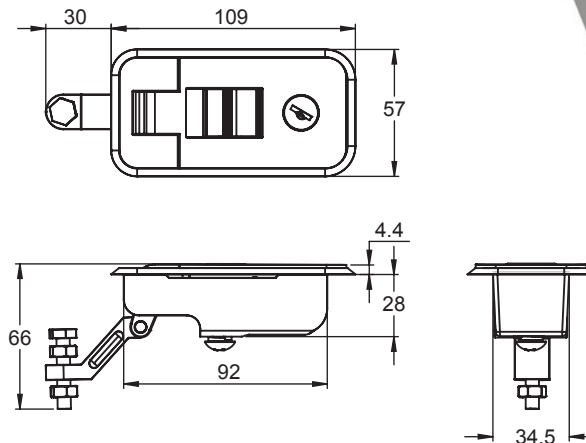
### FINISH

CL109CP - Chrome Plated

CL109BL - Black Powder Coated

### FEATURES

Grip range 15-30mm



# Small Compression Lock

## CL87CP, CL87BL

### MATERIAL

Steel

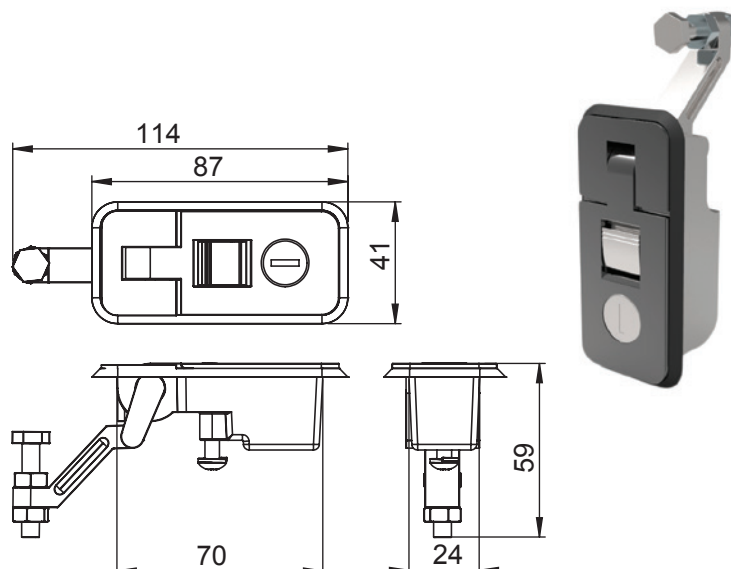
### FINISH

CL87CP Chrome Plated

CL87BL Black Powder Coat

### FEATURES

Grip range 15-30 mm



# Push to Close Latch

## CL93BL, CL93BL-S, CL93WL, CL93BN, CL93BNF, CL93WN

**MATERIAL**

Zinc Alloy

**FINISH**

Black Powder Coated

**FEATURES**

Heavy duty, low profile

**CL93BL**

Locking, raised trigger, Black Keyed CH751

**CL93BL-S**

Locking, raised trigger, Black Keyed SL019

**CL93WL**

Locking, raised trigger, White Keyed CH751

**CL93BN**

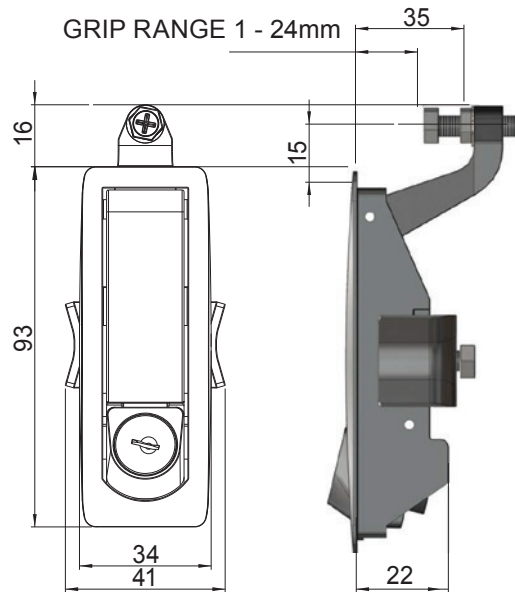
Non Locking, without lock, Black

**CL93BNF**

Non Locking, flush trigger, Black

**CL93WN**

Non Locking, flush trigger, White



# Large Compression Latch

## CL110BL-SGR, CL110BL, CL110CP, CL110CP-LGR, CL110BL-LGR, CL110 XLGR

**MATERIAL**

Zinc Alloy

**FINISH**

Black Powder Coat & Chrome Plated

**FEATURES**

Heavy duty, low profile

**CL110BL-SGR**

Grip range 1 - 14mm, Locking, Keyed CH751

**CL110BL**

Grip range 15 - 29mm, Locking, Keyed CH751

**CL110CP**

Grip range 15 - 29mm, Chrome plated Locking, Keyed CH751

**CL110CP-LGR**

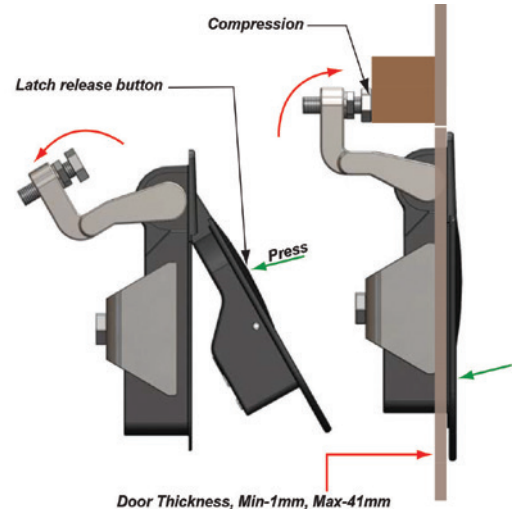
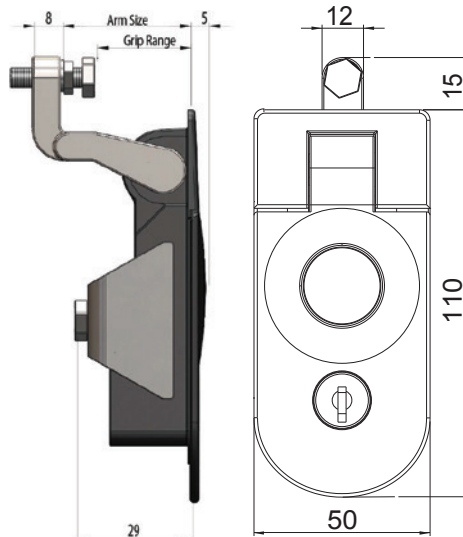
Grip range 30 - 45mm, Chrome Plated Locking, Keyed CH751

**CL110BL-LGR**

Grip range 30 - 45mm, Locking, Keyed CH751

**CL110 XLGR**

Grip range 46 - 57mm, Locking, Keyed CH751



## Push Button Anti Burst Lock ABH180-RK, ABH180

### MATERIAL

Plastic

### FINISH

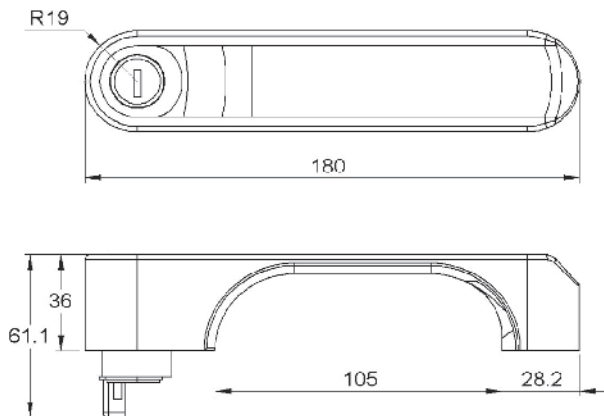
Black

### FEATURES

ABH180-RK Push button handle, keyed in pairs.

ABH180 Push button handle, keyed alike

This system is ideal for use on any door, especially tractor cabs etc.



## Anti Burst Type Cab Door Lock ABL64LH, ABL64RH, SP14

### MATERIAL

Steel

### FINISH

ZP

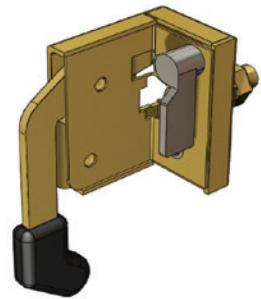
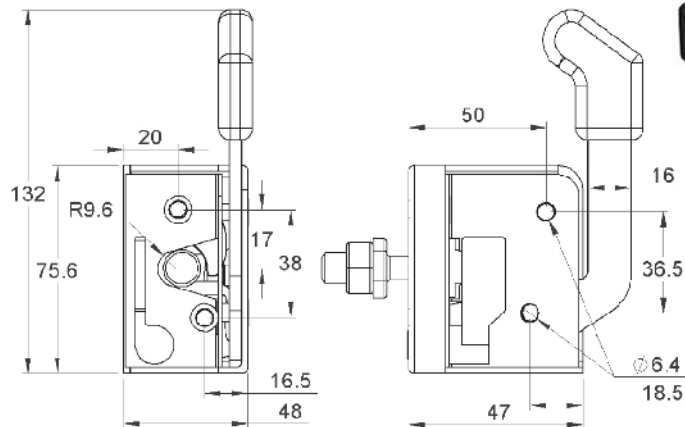
### FEATURES

ABL64LH Left Hand

ABL64RH Right Hand

SP14 Striker Pin

This door lock is an anti burst type lock and is operated by the above push button handle as well as its own inside integral lever handle, which can very easily be turned into a remote operation, and is supplied complete with striker pin SP14



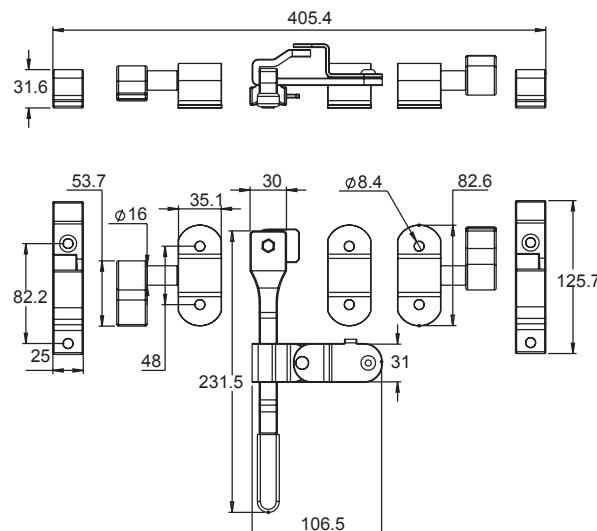
## CamLock Light Duty Bolt-on - Suit 22mm OD Pipe CML22

### MATERIAL

Steel

### FINISH

ZP





## CamLock Medium Duty Bolt-on CML27ZP

**MATERIAL**

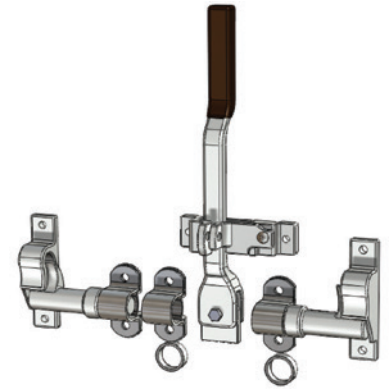
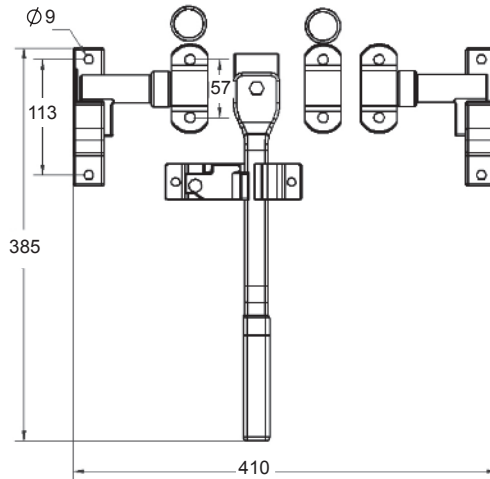
Steel

**FINISH**

ZP

**FEATURES**

Suits 27mm OD Pipe



## CamLock Medium Duty Bolt-on CML27ZP-WB, CML27ZP-NB

**MATERIAL**

Steel

**FINISH**

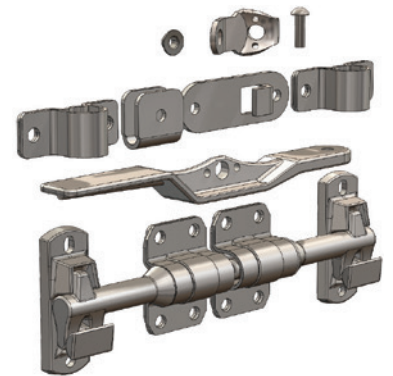
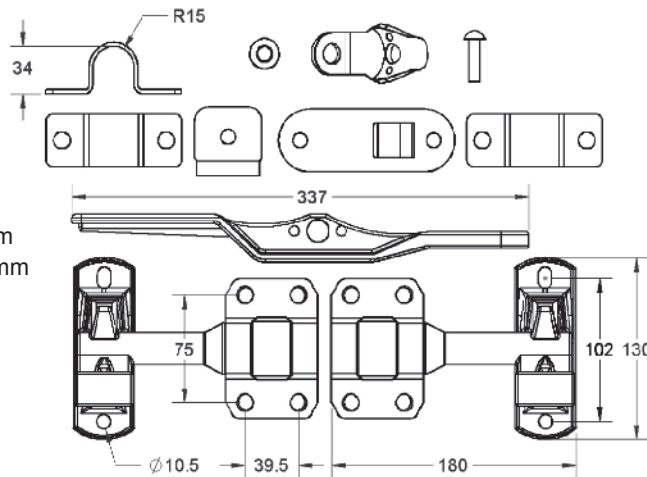
ZP

**FEATURES**

Suits 27mm OD Pipe

CML27ZP-WB - Wide Butt 53mm

CML27ZP-NB - Narrow Butt 44mm



## Cam Lock Kit - Suit 34mm Diameter Tube CML34

**MATERIAL**

Steel

**FINISH**

ZP

**FEATURES**

Weight: 3.30kg

Suits 34mm OD Pipe

Cam lock kit comes without tube



## Recessed Side Door CamLock

### CML246R

**MATERIAL**

Stainless Steel

**FINISH**

Polished Handle

**FEATURES**

29mm for 16mm Diameter Rod

02160309M - Keeper

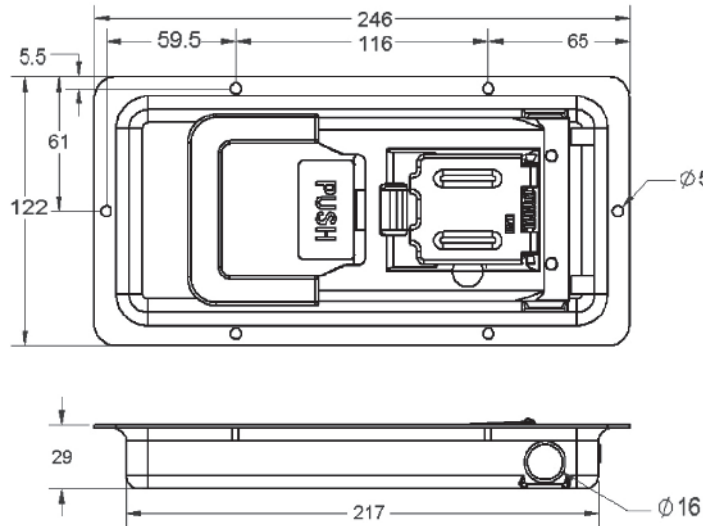
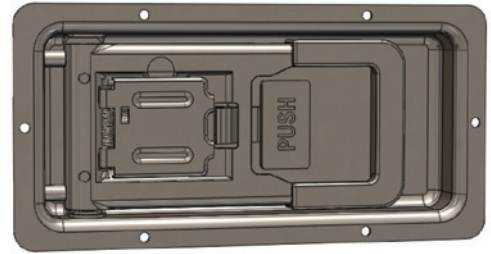
02160309L - Cam

2 cams and 2 keepers supplied

02160309L - Cam



02160309M - Keeper



## Recessed Side Door CamLock

### CML336R

**MATERIAL**

Stainless Steel

**FINISH**

Polished Handle

**FEATURES**

35mm for 16mm Diameter Rod

02160309M - Keeper

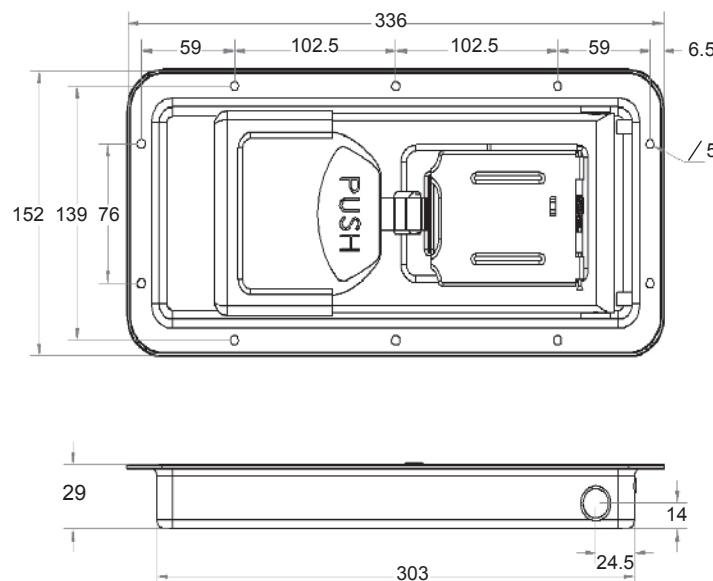
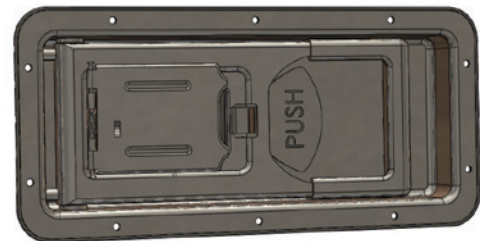
02160309L - Cam

2 cams and 2 keepers supplied

02160309L - Cam



02160309M - Keeper



# Plant On Slam Latch SL2115LH, SL2115RH

**MATERIAL**

Steel

**FINISH**

ZP

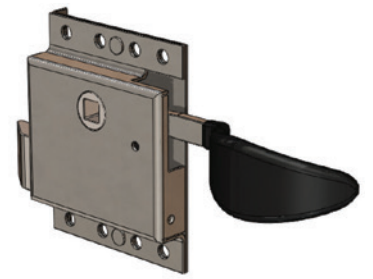
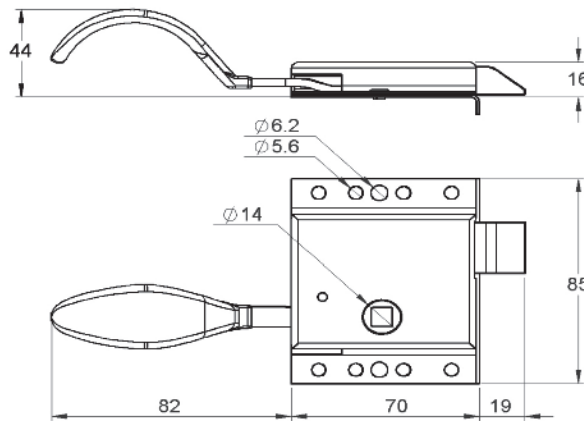
**WEIGHT**

380g

**FEATURES**

- SL2115LH Left hand
- SL2115RH Right hand

Pressed steel case.  
Malleable iron tongue.  
PVC dipped handle.



Left Hand

# Internal Slam Latch SL891LH, SL891RH

**MATERIAL**

Steel

**FINISH**

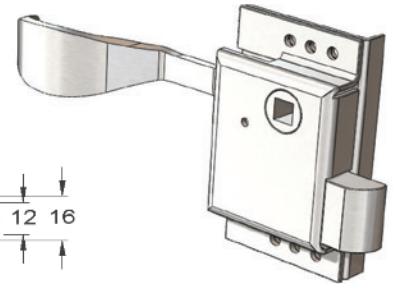
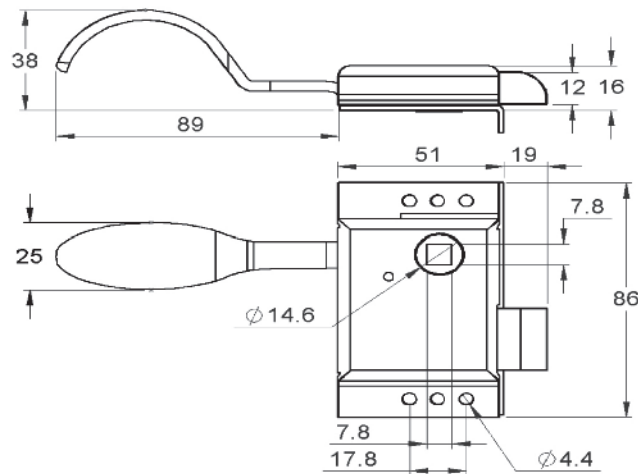
ZP

**WEIGHT**

310g

**FEATURES**

Pressed steel case  
Malleable Iron tongue



Right Hand

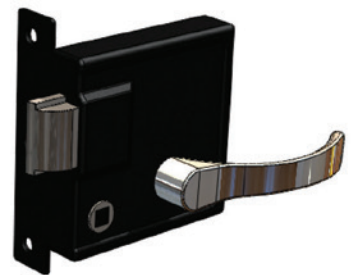
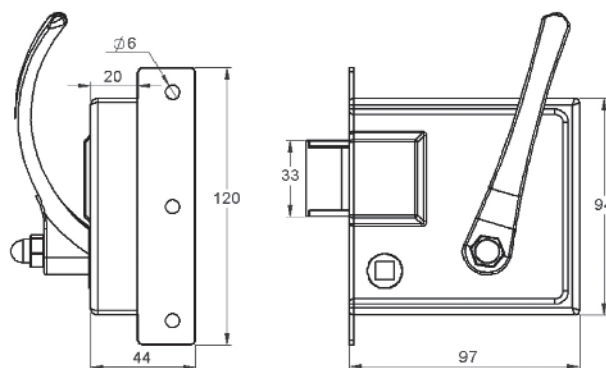
# Cabin Screw-On Lock 600-0093, 600-0094, 580-0002

**MATERIAL**

Steel

**FEATURES**

Complete with inner handle,  
supplied separately



Left Hand

Cabin Screw-On Locks		Finish
600-0093	Left Hand	Black
600-0094	Right Hand	Black
580-0002	Handle	Chrome plated

# Plant On Slam Latch SL2121

**MATERIAL**

Steel

**FINISH**

ZP

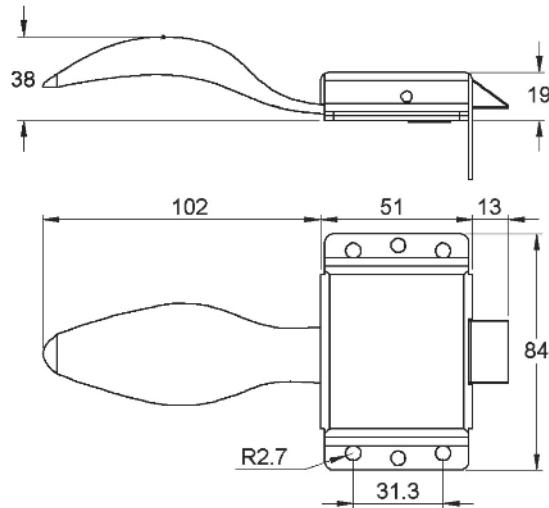
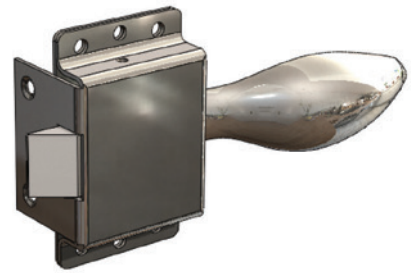
**WEIGHT**

330g

**FEATURES**

SL2121 Non-locking

Pressed steel case.  
Malleable iron tongue.



# Slam Latch General Purpose SL60

**MATERIAL**

Steel

**FINISH**

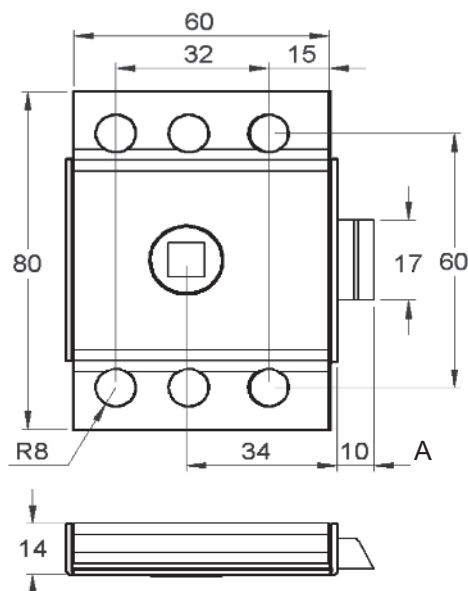
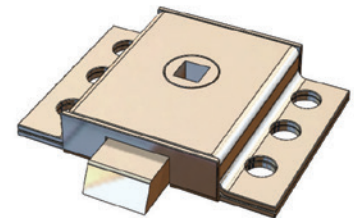
ZP

**DIMENSION A**

SL60 - 10mm

**FEATURES**

Pressed Steel case.  
Malleable Iron tongue.



## End-Slam Latch SL62ND

**MATERIAL**

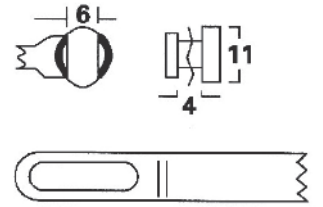
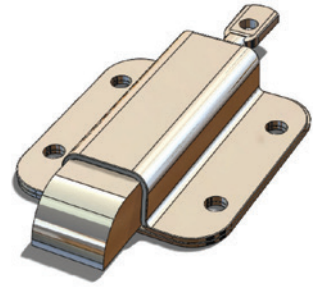
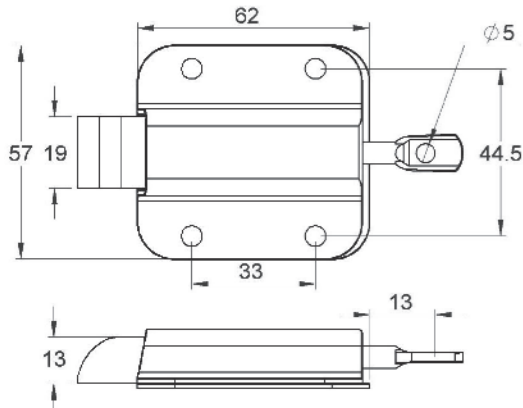
Steel

**FINISH**

Zinc Plated

**FEATURES**

Bolt projection variable, 9-16mm.  
Minimum load 5kg for full bolt travel.  
Mild steel model made in CR4.



## Slam Latch SL76ZP, SL76FPZP

**MATERIAL**

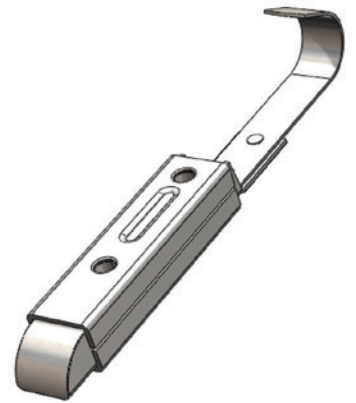
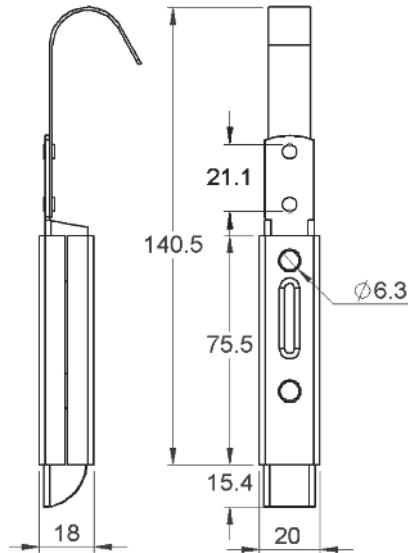
Steel

**FINISH**

Galvanised

**FEATURES**

SL76ZP Spring catch (less hook handle)  
SL76FPZP Spring catch, weight 180g



## Slam Latch 2467-001

**MATERIAL**

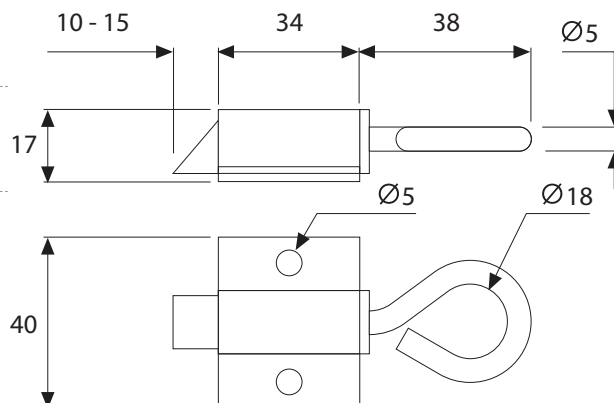
ZP Steel

**FINISH**

Gold passivated

**WEIGHT**

80g



# Moulded Slam Latch w/ Pull Knob

## SL80MLD-K, SL80MLD

### MATERIAL

Acetal Copolymer

### FINISH

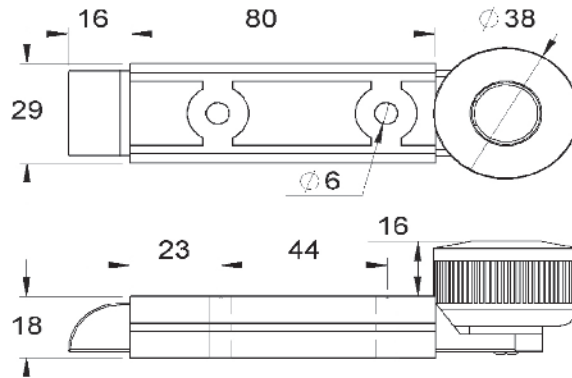
Black

### FEATURES

The unique design of these latches allows 'fix through' mounting to suit narrow door pillars, sections and channels. Moulded construction provides the benefits of light weight, self-lubricating action, and total corrosion resistance at an inexpensive price.

Note: Knob & rivet can be supplied loose, for assembly after latch is installed in panel.

SL80MLD-K Moulded slam latch, pulled knob fitment  
 SL80MLD Moulded slam (no knob)



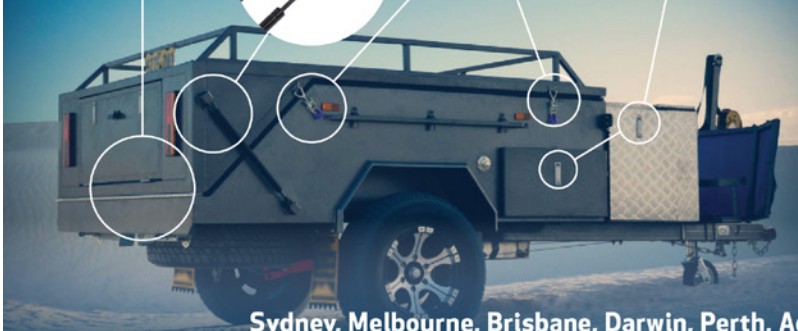
**UES**  
 international  
 Engineering Solutions  
 Since 1904

The best quality hardware and accessories for your camper trailer, caravan or 4x4 vehicle.

Visit your nearest UES showroom or buy online at

**www.uesint.com**

- Locks
- Hinges
- Latches
- Rubber & Seals
- Gas Struts
- Drawer Slides
- Water Tanks



Sydney, Melbourne, Brisbane, Darwin, Perth, Adelaide, Nowra, Auckland

Visit us in store to receive your limited edition UES Trade Card!

**5% off** our entire range,  
 plus access to special discounts and giveaways



## Hooked Budget Lock 3-16200, 3-16201

MATERIAL

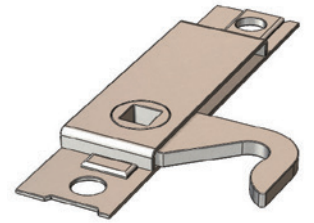
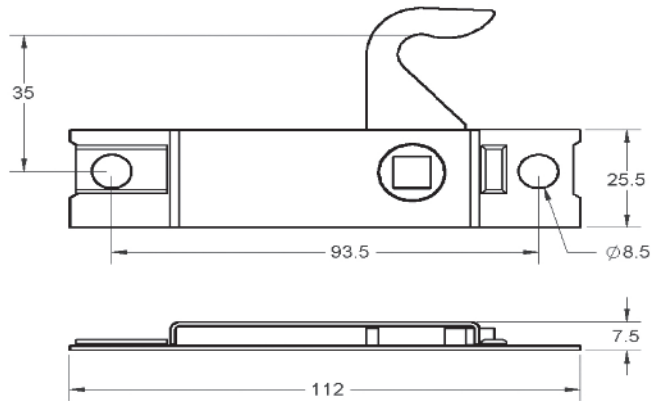
Steel

FINISH

ZP

FEATURES

3-16200 LH  
3-16201 RH



## Budget Locks BL83LH, BL83RH

MATERIAL

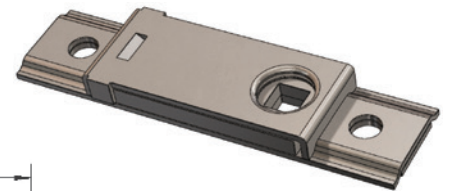
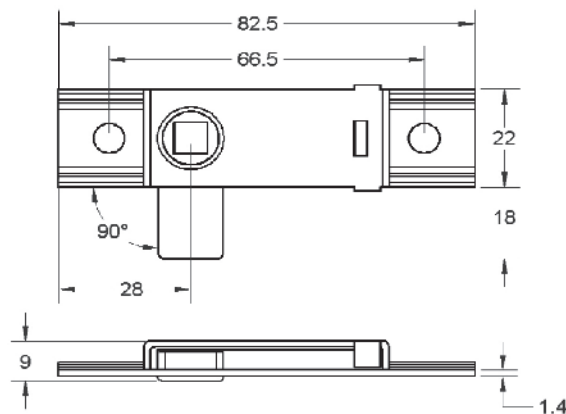
Steel

FINISH

ZP

FEATURES

BL83LH - Left Hand  
BL83RH - Right Hand



BL83RH

## Budget Lock Key BLK83, BLK130

MATERIAL

Steel

FINISH

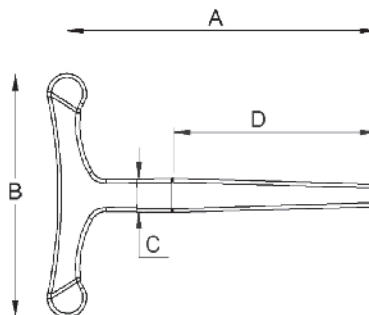
ZP

WEIGHT

BLK83 - 60g  
BLK130 - 130g

FEATURES

BLK83 - 83mm  
BLK130 - 130mm



	BLK83	BLK130
<b>A</b>	76	120
<b>B</b>	63	72
<b>C</b>	9	9.5
<b>D</b>	46	44

# Budget Lock

## BL83ZP, BL83SS

### MATERIAL

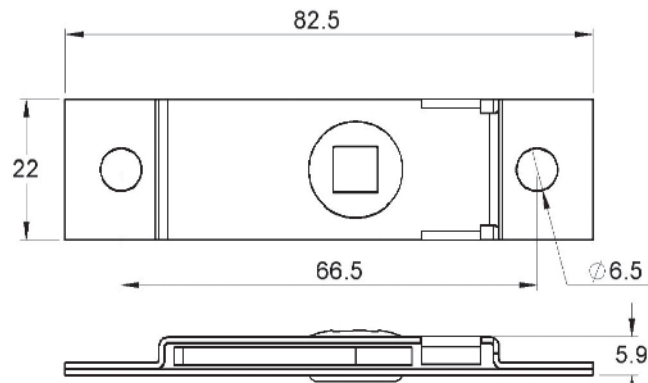
BL83ZP Steel  
 BL83SS 316 Stainless Steel

### FINISH

BL83ZP ZP  
 BL83SS Raw

### FEATURES

Simple dead-bolt latches in which bolt can move 180° completely through the case.



# Push to Close Latch

## SL47

### MATERIAL

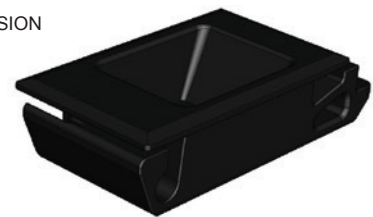
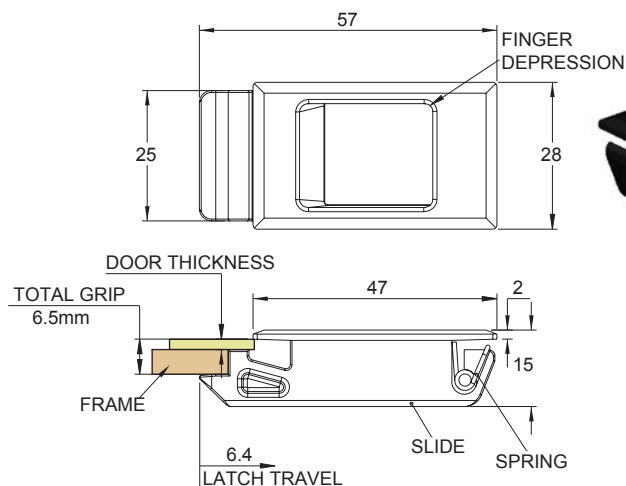
ABS, SS Spring

### FINISH

Black

### FEATURES

Single hole snap-in installation  
 Corrosion resistant materials  
 SL47 - Suits 1.5mm Door thickness



# Striker Plate

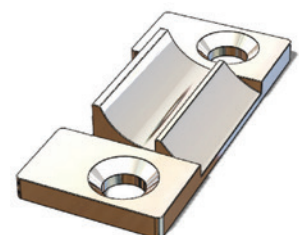
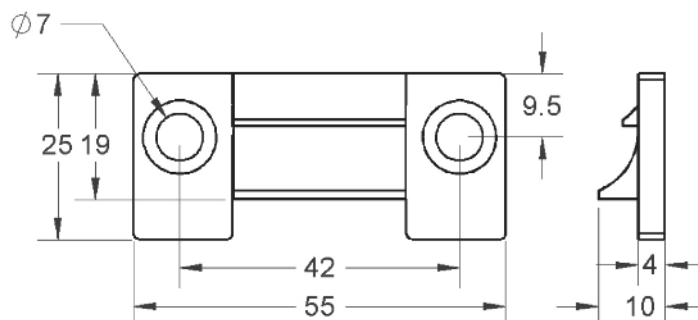
## X1

### MATERIAL

Zinc Die-Cast

### FINISH

ZP





## Budget Lock Escutcheon

### 0130-001

**MATERIAL**

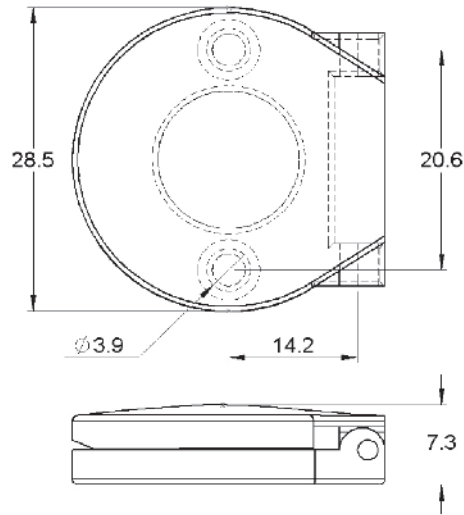
Zinc Die-Cast

**FINISH**

Chrome Plated

**WEIGHT**

20g



## Gravelly Fastener w/ Plate

### 0662-001

**MATERIAL**

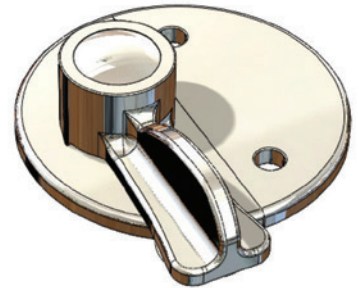
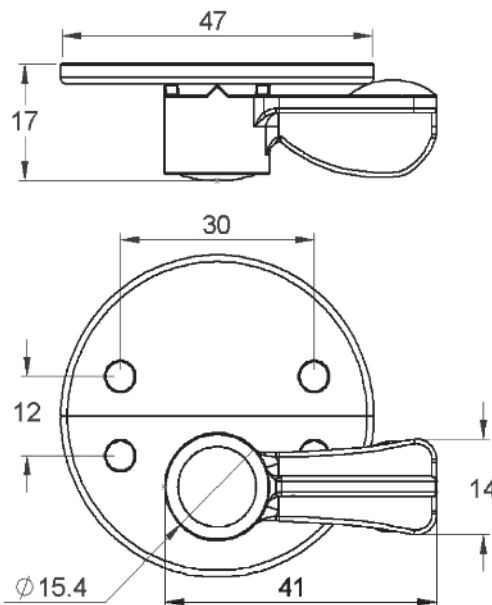
Die-cast

**FINISH**

Chrome Plated

**WEIGHT**

70g



# Refrigeration Door Lock

## RDL-F - with Flush Striker

### MATERIAL

Zinc Diecast

### FINISH

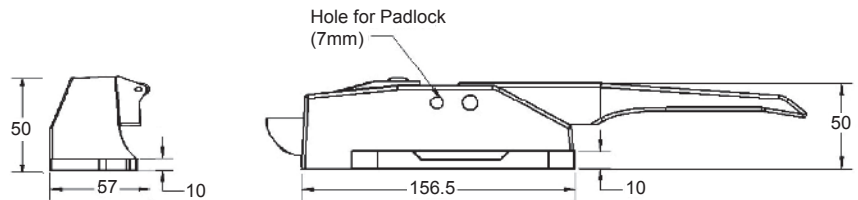
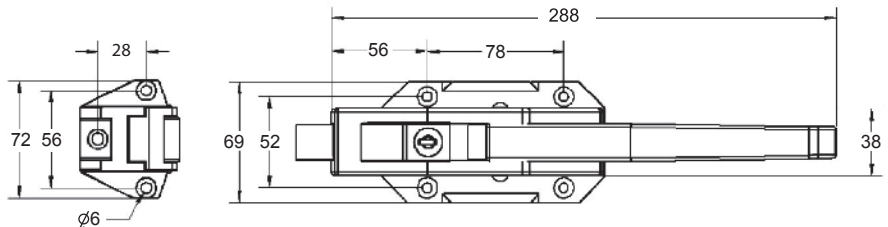
Chrome Plated

### FEATURES

Chrome slam latch with offset striker adjustable in 2.5mm increments and inside release handle.

This latch is widely used for large size insulated enclosures, such as cold stores or containerised units, where a surface-mounted latch is preferable to avoid breaching the integrity of the door.

With slam action against a roller striker, this system can be used on doors flush fit against the frame or offset between 35-70mm height. There is an inside safety 'punch' handle for emergency release.



# Flush Pull Latches

## SL61NBL, SL61NGR, SL61NW, SL61NSS SL61BL, SL61GR, SL61SS

### MATERIAL

UL94-HB ABS or  
316 Stainless Steel

### FINISH

Black, White, Cream polymer  
Satin Finish Stainless Steel

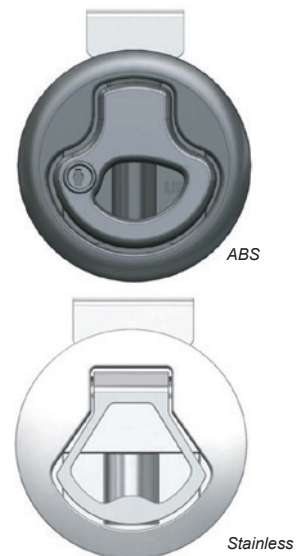
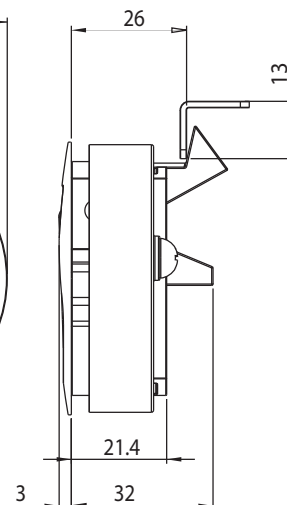
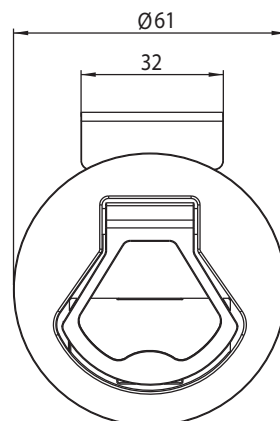
### FEATURES

Heavy duty design

- SL61NBL *Non Locking Black*
- SL61NGR *Non Locking Grey*
- SL61NW *Non Locking White*
- SL61NSS *Non Locking Stainless Steel*
- SL61BL *Locking Black*
- SL61GR *Locking Grey*
- SL61SS *Locking Stainless Steel*

Non-Locking *Panel Thickness 0-8 mm*  
Locking *Panel Thickness 0-7 mm*

For 12mm - 20mm applications use bracket M1WBK



## Push Button Latch PBL, PBNL

### MATERIAL

ABS Body; SS304 Keeper & Washer

### FINISH

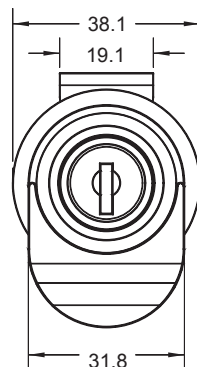
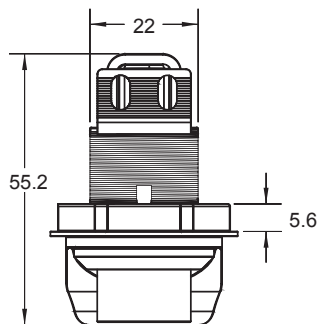
Black

### FEATURES

Push button opening with a single hole installation.

PBL - Non Locking

PBNL - Locking CH751



## Compartment Locks

### CPL26, CPL26KA1, CPL26KA3, CPL26KA2

### MATERIAL

Zinc Die-Cast

### FINISH

Chrome Plated

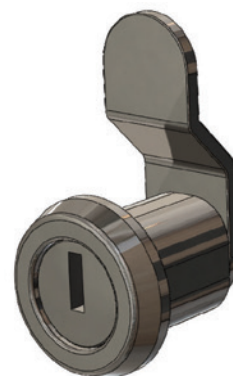
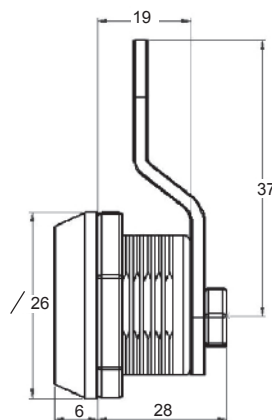
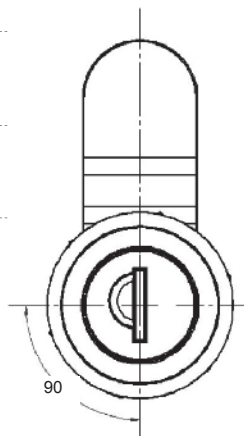
### FEATURES

CPL26 - Mixed Keys

CPL26KA1 - K/A FS901

CPL26KA3 - K/A FS880

CPL26KA2 - FS904

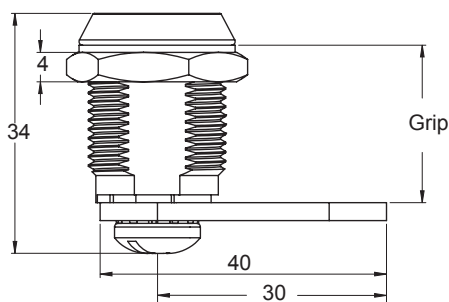
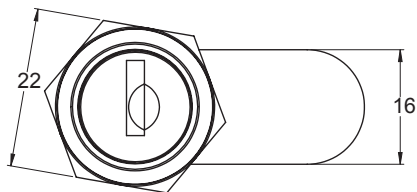


## Compartment Locks

### CPL16AC, CPL16CW, CPL22AC, CPL22CW, CPLWH

	MATERIAL	FINISH	FEATURES	GRIP	GRIP
CPL16AC	Steel	Chrome Plated	Anti-clockwise	16mm	6 - 26mm
CPL16CW	Steel	Chrome Plated	Clockwise	16mm	6 - 26mm
CPL22AC	Steel	Chrome Plated	Anti-clockwise	22mm	12 - 32mm
CPL22CW	Steel	Chrome Plated	Clockwise	22mm	12 - 32mm
CPLWH	Steel	Black P/C	Wing Head	22mm	12 - 32mm

Keyed CH751



Supplied with 2 cams

# CTL Compression Latch Keys

**MATERIAL**

Die-cast Zinc Alloy

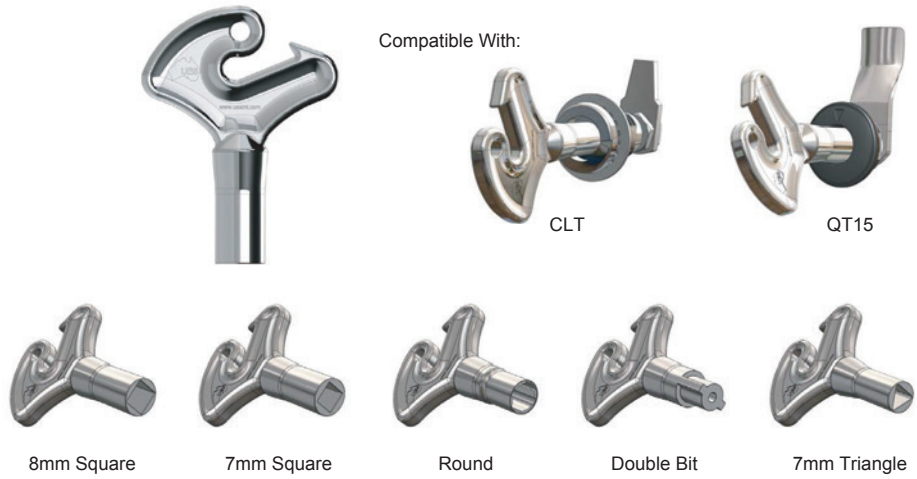
**FINISH**

Chrome Plated

**FEATURES**

ADAPTABLE to CTL and QT15

- CLT3P - 3mm Double Bit
- CLT7S - 7mm Square Driver
- CLT7T - 7mm Triangle Driver
- CLT8S - 8mm Square Driver
- CLT9R - 9mm Round Driver



# CLT Compression Latch

**MATERIAL**

Die-cast Zinc Alloy

**FINISH**

Chrome Plated (CLT3DCP)  
Black (Others)

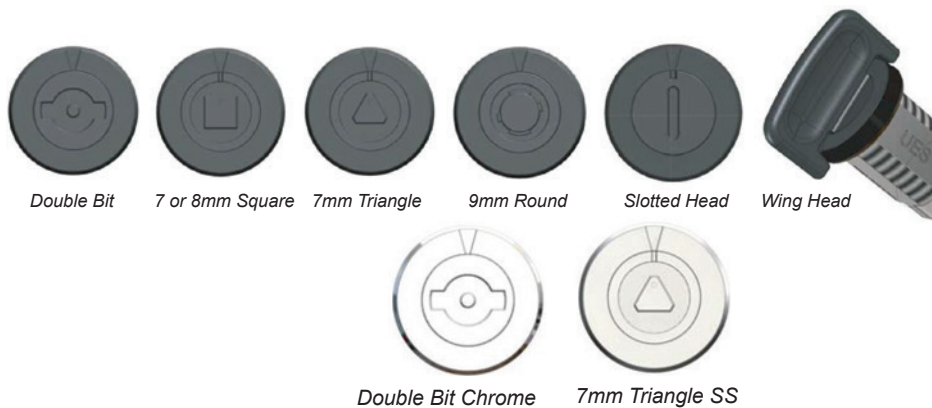
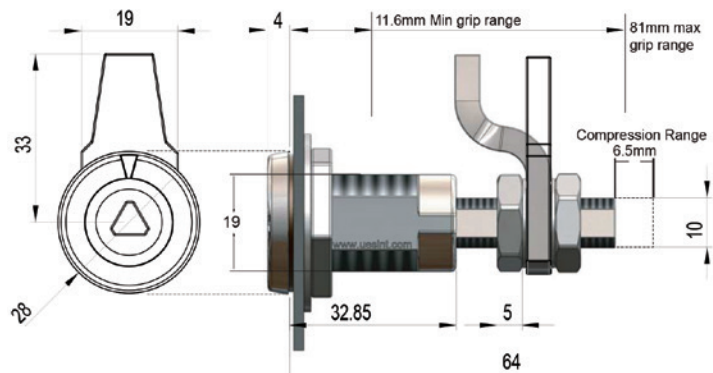
**FEATURES**

- CLT7SBL 7mm Square Driver - Black
- CLT7TBL 7mm Triangle Driver - Black
- CLT8HBL 8mm Hex Driver - Black
- CLT8SBL 8mm Square Driver - Black
- CLT9RBL 9mm Round Driver - Black
- CLTTHBL T-Handle Locking Head Black
- CLT3DCP Double Bit 3mm Driver Chrome
- CLTDSBL Slot Driver - Black
- CLTWKBL Wing Head Driver - Black
- CLT7TSS Stainless Steel 7mm Triangle Driver - Black
- CLT8HSS Stainless Steel 8mm Hexagon Driver - Black

ALL LATCHES COME WITH 3 CAMS OFFERING A GRIP RANGE OF 12MM - 81MM



UES KEY (Sold Separately)



# QT15 Latch

## QT15-7S-BL

**MATERIAL**

Die-cast Zinc Alloy

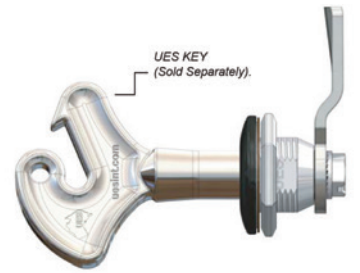
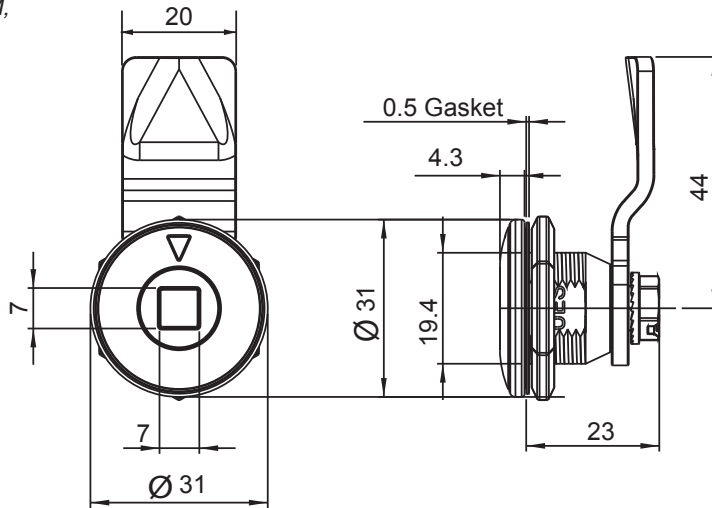
**FINISH**

Chrome Plated

**FEATURES**

**QT15-7S-BL - 7mm Square Driver**

LATCHES COME WITH 4 CAMS OFFERING A GRIP RANGES OF 6.5MM, 11.5MM, 15.5MM + 18MM



UES KEY (Sold Separately).  
QT15 Head Key Styles



7mm Square

# Quarter Turn Latch

## QT15-WH-BL

**MATERIAL**

Steel

**FINISH**

Zinc Plated, Black P/C

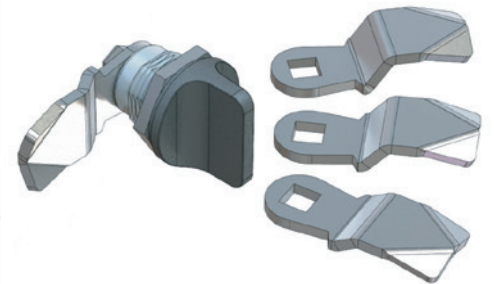
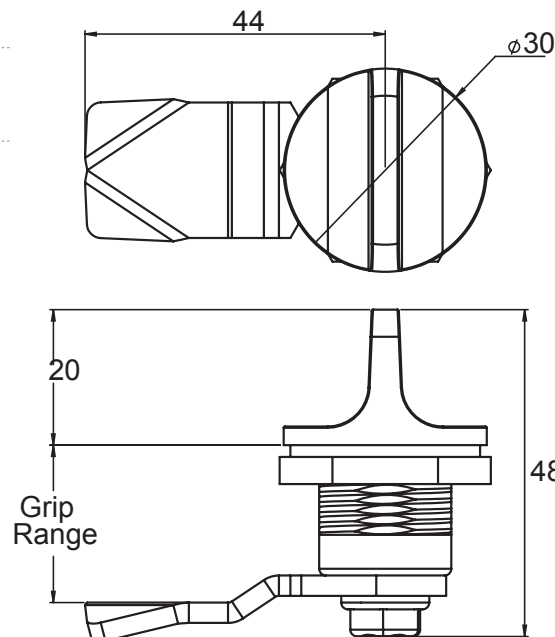
**FEATURES**

Wing Head

Supplied with 4 cams

Grip Range:

- 7mm
- 10mm
- 12mm
- 20mm



# Vibration Resistant Quarter-turn Fastener

## QT18

### MATERIAL

Zinc Die-Cast

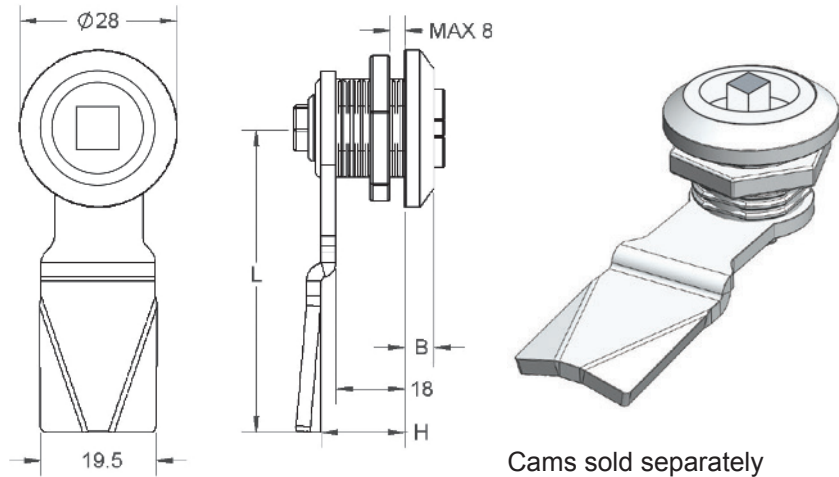
### FINISH

Chrome Plated

### FEATURES

Vibration resistant  
Assembled to IP 65/Nema 4  
Complete with earth nut  
Zinc die-cast housing CP  
32mm diameter X 18mm

Fastener for any application requiring a quarter turn action to secure doors etc. The cam "snaps in" at the open and closed positions, preventing unintentional opening of the fastener due to vibrations.



### Quarter-turn Latches

SINGLE POINT CAMS	
P/N Steel without projection	H in mm
QTC14	14
QTC18	18
QTC20	20
QTC22	22
QTC26	26
QTC28	28
QTC32	32
QTC34	34
QTC40	40

Part Number	Drive Insert
QT18-7S	7mm Square
QT18-7T	7mm Triangle
QT18-8D	8mm Square-Slotted
QT18-8S	8mm Square
QT18-8T	8mm Triangle
QT18-DS	Slotted

# Quarter Turn Lock - 8mm Square

## QT18-8S-SS, QTC18SS

### MATERIAL

Stainless Steel

### FINISH

Polished

### FEATURES

QT18-8S-SS and QTC18SS Sold Separately

Stainless steel quarter-turn fastener for applications where high corrosion resistance is required. Acid proof steel quality for extreme environments.

